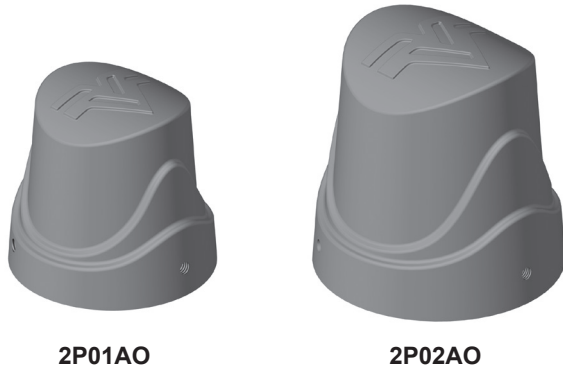


Job Name: _____	Client Name: _____
Job Location - City: _____ State: _____	Created By: _____ Date: _____
Product: _____ Quote: _____	Customer Approval: _____ Date: _____

## FEATURES

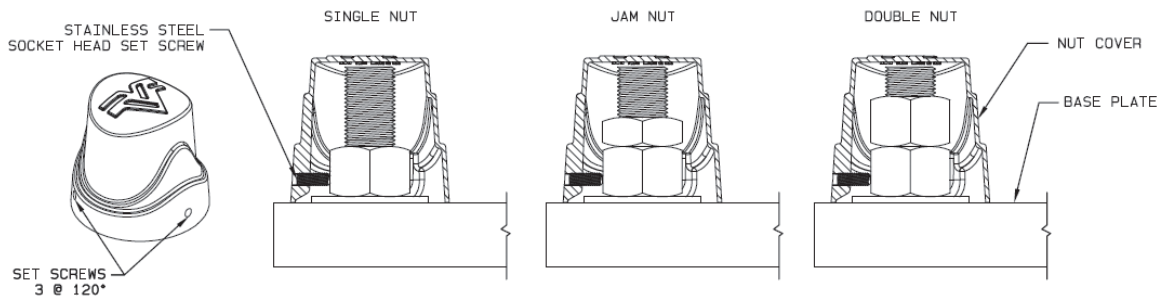
- Aesthetically pleasing for lighting and traffic applications
- Slip-over design for quick, easy assembly
- Durable, high quality aluminum provides clean, crisp details
- Provided with stainless-steel hardware
- Tamper-proof hardware available as special order
- Long-lasting finish available in a variety of colors
- Install on existing poles to enhance streetscape



ANCHOR BOLT		DIMENSIONS OF COVER		*MAX. BOLT PROJECTION (IN)	MODEL NUMBER
DIA. (IN)	NUT CONFIGURATION	DIA (IN)	HEIGHT (IN)		
1.25	ALL	4.75	4.38	3.88	2P01AO
1.50	ALL	4.75	4.38	3.88	2P01AO
1.75	ALL	4.75	4.38	3.88	2P01AO
2.00	SINGLE ONLY	4.75	4.38	3.88	2P01AO
2.00	ALL	5.75	5.69	5.13	2P02AO
2.25	ALL	5.75	5.69	5.13	2P02AO
2.50	SINGLE ONLY	5.75	5.69	5.13	2P02AO

\*Maximum bolt projection above baseplate.

## DETAILS - VARIABLE NUT CONFIGURATIONS



## PRODUCT ORDERING CODES

MODEL NUMBER	COLOR*	
2P01AO 2P02AO	<b>STEEL</b> WH = White ST = Sandstone BK = Black SM = Silver Metallic SL = Silver LG = Light Gray SG = Slate Gray DT = Dark Tan MB = Medium Bronze CB = Bronze DB = Dark Bronze BN = Brown HG = Hunter Green DG = Dark Green RD = Red SC = Special Color (Contact Factory)	<b>ALUMINUM</b> DWH = White DSS = Sandstone BR = Burgundy HG = Hunter Green DNA = Natural Aluminum DCG = Charcoal Gray DMB = Medium Bronze SBN = Sanded Brown DNB = New Dark Bronze DDB = Dark Bronze SBK = Sanded Black DBL = Black DSB = Steel Blue DTG = Dark Green DBR = Red SC = Special Color (Contact Factory)

\* Choose steel or aluminum when used in conjunction with the appropriate pole material.