

Job Name: _____
 Job Location - City: _____ State: _____
 Product: _____ Quote: _____

Client Name: _____
 Created By: _____ Date: _____
 Customer Approval: _____ Date: _____

PERFORMANCE CHARACTERISTICS

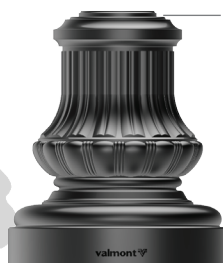
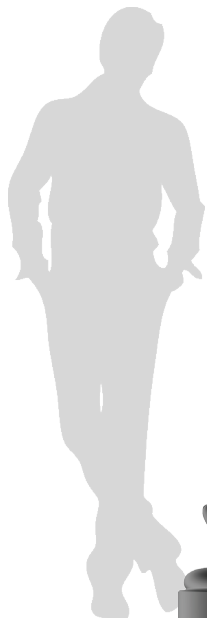


Decorative two-piece clamshell base cover

SPECIFICATION FEATURE	CUSTOMER BENEFIT
Cast from unique BASF formulation of Elastomeric Urethane	<ul style="list-style-type: none"> Optimum impact resistance and superior durability Non-corrosive and will not rust or rot. Non-conductive without conventional access door to improve safety and security Inherently theft resistant with no resale value as scrap Affordable and easy to maintain
Cast in reducer rings to limit top ledge of base to less than 1.25" for typical applications	<ul style="list-style-type: none"> Mitigates potential for debris Refines the profile across the full range of pole diameters
Available in a wide variety of colors and textures	<ul style="list-style-type: none"> Matching Valmont Steel, Aluminum, or other manufacturer's colors.
Durable finish backed with 3-year warranty	<ul style="list-style-type: none"> Superior performance provided as the Enduro standard
Parent material impregnated with black tint, prime coat added as standard for light color finishes	<ul style="list-style-type: none"> Maximizes finish preservation over time As optional, parent material may be custom tinted to compliment alternate color
Made in the USA	<ul style="list-style-type: none"> Compliant with Buy America DOT standards and furnished with brass inserts coupled with stainless steel hardware Ensures consistent supply chain

POLE BASE DIAMETER RANGE		DIMENSIONS OF BASE COVER		MODEL NUMBER
TAPERED SMOOTH OR FLUTED STEEL & FLUTED ALUMINUM (IN)	ALUMINUM NON-TAPERED SMOOTH (IN)	DIA (IN)	HEIGHT (IN)	
5.9 - 9.0	6.0 - 10.0	24.0	29.9	3J01EC
9.1 - 13.5	10.0 & 12.0	30.0	38.5	3J02EC
13.6 - 18.5	-	36.0	45.3	3J03EC

- Tapered smooth or fluted steel and fluted aluminum sized with semi-flush standard handhole, typical base plate and anchor bolts. Pole taper rate is 0.14" per foot.
- Aluminum round non-tapered dimensions sized with flush handhole and typical base plate and anchor bolts.
- Base cover heights are nominal and differ minimally with application of reducer rings. See lines below for reducer ring breaks.
- Guideline sizing is based on Valmont commercial standards. Codes and customer standards may dictate pole specifications that would affect base cover fit, to verify selection contact the factory. Retrofit of base covers require detailed information from existing installation for factory to verify proper selection. For pole sizes not listed, contact the factory.



3J01EC



3J02EC



3J03EC

WASHINGTON 3J

Enduro® - Clamshell

valmont

STRUCTURES

Job Name: _____

Job Location - City: _____ State: _____

Product: _____ Quote: _____

Client Name: _____

Created By: _____ Date: _____

Customer Approval: _____ Date: _____

BASE COVER CLOSE-UP



SPC7616 06/15 valmontstructures.com carries the most current spec information and supersedes these guidelines.

PRODUCT ORDERING CODES

MODEL NUMBER	COLOR*		POLE BASE OD (IN)	BASE PLATE			ANCHOR BOLTS		HANDHOLE		
				BOLT CIRCLE DIA (IN)	SQUARE (IN)	THICKNESS (IN)	DIAMETER (IN)	PROJECTION (IN)	SIZE W x H (IN)	CENTER LINE HEIGHT (IN)	PROJECTION (IN)
3J01EC 3J02EC 3J03EC	STEEL WH = White ST = Sandstone BK = Black SM = Silver Metallic SL = Silver LG = Light Gray SG = Slate Gray DT = Dark Tan MB = Medium Bronze CB = Bronze DB = Dark Bronze BN = Brown HG = Hunter Green DG = Dark Green RD = Red SC = Special Color (Contact Factory)	ALUMINUM DWH = White DSS = Sandstone BR = Burgundy HG = Hunter Green DNA = Natural Aluminum DCG = Charcoal Gray DMB = Medium Bronze SBN = Sanded Brown DNB = New Dark Bronze DDB = Dark Bronze SBK = Sanded Black DBL = Black DSB = Steel Blue DTG = Dark Green DBR = Red SC = Special Color (Contact Factory)	<div><div></div><div>1. Model Number, Color and Pole Base OD required on all orders. 2. Additional information required when ordering separate from poles.</div></div>								

1. Model Number, Color and Pole Base OD required on all orders.
2. Additional information required when ordering separate from poles.