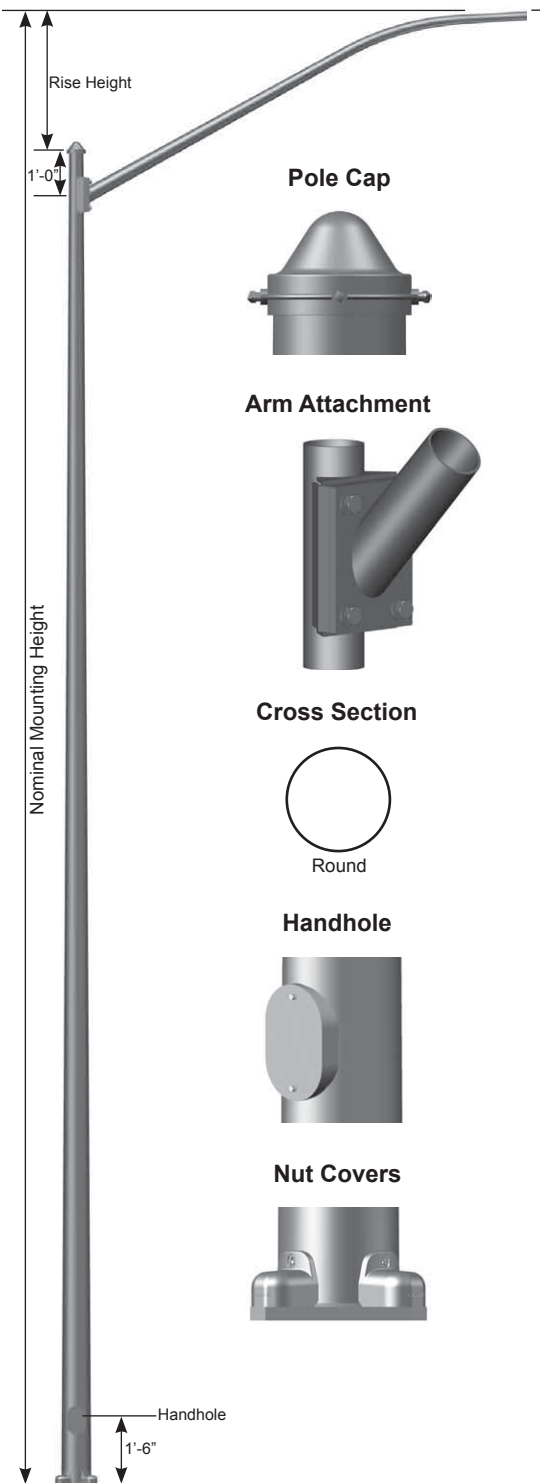


Job Name: _____	Client Name: _____
Job Location - City: _____ State: _____	Created By: _____ Date: _____
Product: _____ Quote: _____	Customer Approval: _____ Date: _____

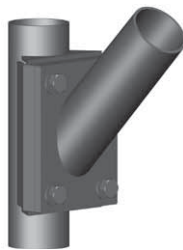
SPECIFICATIONS



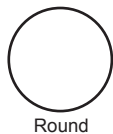
Pole Cap



Arm Attachment



Cross Section



Round

Handhole



Nut Covers



Pole - The pole shaft conforms to ASTM A595 Grade A or A572 Grade 55 with a constant linear taper of 0.14 in/ft.

Pole Top - A removable pole cap with hardware is provided.

Luminaire Arm - Luminaire arm shaft conforms to ASTM A595 Grade A with a constant linear taper of 0.14 in/ft.. Double luminaire arms are oriented 180° apart. For other orientations please consult factory.

Luminaire Arm Attachment - The luminaire arm and pole connection plates conform to ASTM A36.

Handhole - A covered handhole and grounding provision with hardware is provided.

Nut Covers - Anchor bolt nut covers with hardware are provided.

Full Base Cover - Optional two-piece full base cover is fabricated from ABS plastic. Valmont reserves the right to provide an optional two-piece steel full base cover on some applications depending upon the finish requirement and/or pole base diameter.

Anchor Base - The anchor base (base plate) conforms to ASTM A36.

Anchor Bolts - Anchor bolts conform to ASTM F1554 Grade 55 and are provided with two hex nuts and two flat washers. Bolts have an "L" bend on one end and are galvanized a minimum of 12" on the threaded end.

Hardware - All structural fasteners are galvanized high strength carbon steel. All non-structural fasteners are galvanized or zinc-plated carbon steel or stainless steel.

Finish - Standard finishes are galvanized, prime painted or any of Valmont's V-PRO™ Protection Systems. Additional finish options available upon request.

Design Criteria - Please reference Design Criteria Specification for appropriate design conditions.

ARM DATA

ARM SPAN (FT)	RISE HEIGHT	BASE OD (IN)	END OD (IN)	WALL THK (IN)
10	3'-0"	3.95	2.40	11
12	4'-0"	4.27	2.40	11
15	5'-0"	4.72	2.40	11
20	7'-0"	5.49	2.40	11
25	8'-0"	6.21	2.40	11
30	9'-0"	6.93	2.40	11

Double Arm Arrangement



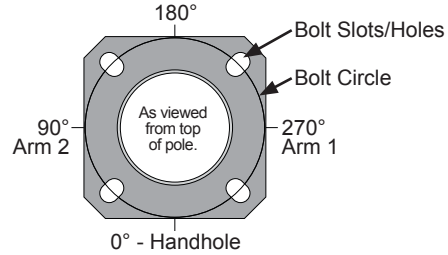
ROUND TAPERED STEEL Smooth DS56 / 40'-45'

Job Name: _____	Client Name: _____
Job Location - City: _____ State: _____	Created By: _____ Date: _____
Product: _____ Quote: _____	Customer Approval: _____ Date: _____

ANCHORAGE DATA

POLE BASE OD (IN)	WALL THK (GA)	BASE PLATE				ANCHOR BOLTS		
		BOLT CIRCLE		SQUARE (IN)	THK (IN)	DIA x LENGTH x HOOK (IN)	PROJECTION (IN)	± (IN)
DIA (IN)	± (IN)	DIA x LENGTH x HOOK (IN)	PROJECTION (IN)					
9.00	11	12.50	0.50	12.38	1.000	1.00 x 36.00 x 4.00	4.25	0.25
9.50	11	13.00	0.50	13.00	1.000	1.00 x 36.00 x 4.00	4.25	0.25
10.00	11	13.50	0.50	14.00	1.000	1.00 x 36.00 x 4.00	4.25	0.25
10.50	10	14.00	0.50	14.50	1.250	1.25 x 42.00 x 6.00	5.00	0.25
11.00	10	14.50	0.50	15.00	1.500	1.25 x 42.00 x 6.00	5.25	0.25
11.00	7	15.00	0.50	16.50	1.500	1.25 x 42.00 x 6.00	5.25	0.25

Anchor Base Detail



LOAD AND DIMENSIONAL DATA

NOMINAL MOUNTING HEIGHT	DESIGN INFORMATION				POLE DIMENSIONS					MODEL NUMBER
	QUANTITY OF ARMS	MAX ARM LENGTH (FT)	100 MPH w/1.3 GUST		BASE OD (IN)	TOP OD (IN)	WALL THK (GA)	STRUCTURE WEIGHT ² (LBS)		
			MAX LUMINAIRE EPA ¹ (SQFT)	MAX LUMINAIRE WEIGHT ¹ (LBS)						
40'-0"	Single	10	2.0	75	9.00	3.82	11	410	R900A370	
	Single	12	2.0	75	9.00	3.96	11	420	R900A360	
	Single	15	2.0	75	9.00	4.10	11	440	R900A350	
	Single	20	2.0	75	10.00	5.38	11	525	RT00A330	
	Single	25	2.0	75	10.50	6.02	10	630	RT50B320	
	Single	30	2.0	75	11.00	6.66	10	700	RE00B310	
	Double	10	2.0	75	9.00	3.82	11	465	R900A370	
	Double	12	2.0	75	9.00	3.96	11	485	R900A360	
	Double	15	2.0	75	9.00	4.10	11	540	R900A350	
	Double	20	2.0	75	9.50	4.88	11	640	R950A330	
45'-0"	Single	10	2.0	75	9.50	3.62	11	470	R950A420	
	Single	12	2.0	75	9.50	3.76	11	475	R950A410	
	Single	15	2.0	75	10.00	4.40	11	530	RT00A400	
	Single	20	2.0	75	10.50	5.18	10	640	RT50B380	
	Single	25	2.0	75	11.00	5.82	10	705	RE00B370	
	Single	30	2.0	75	11.00	5.96	7	885	RE00E360	
	Double	10	2.0	75	9.50	3.62	11	510	R950A420	
	Double	12	2.0	75	10.00	4.26	11	575	RT00A410	
	Double	15	2.0	75	10.00	4.40	11	625	RT00A400	
	Double	20	2.0	75	10.50	5.18	10	780	RT50B380	

DS56 30'-35'
mounting heights
available at
valmontstructures.com

- EPA represents the Effective Projected Area of each luminaire. Designs are limited to one luminaire per arm. Variations from sizes above are available upon inquiry at the factory. Satisfactory performance of poles is dependent upon the pole being properly attached to a supporting foundation of adequate design.
- Structure Weight is a nominal value which includes the pole shaft, base plate and luminaire arm(s) only.

PRODUCT ORDERING CODES

DESIGN SERIES	MODEL NUMBER	FIXTURE MOUNTING	FINISH	COLOR	V-PRO™ PROTECTION SYSTEM	OPTIONS
DS56	R900A370 R900A360 R900A350 RT00A330 RT50B320 RE00B310 R950A330 R950A420 R950A410 RT00A400 RT50B380 RE00B370 RE00E360 RT00A410	10S = 10' Single 10D = 10' Double 12S = 12' Single 12D = 12' Double 15S = 15' Single 15D = 15' Double 20S = 20' Single 20D = 20' Double 25S = 25' Single 30S = 30' Single	GV = Galvanize PP = Prime Paint FP = Finish Paint GF = Galvanized + Finish Paint	-- = Galvanize -- = Prime Paint WH = White ST = Sandstone BK = Black SM = Silver Metallic SL = Silver LG = Light Gray SG = Slate Gray DT = Dark Tan MB = Medium Bronze CB = Bronze DB = Dark Bronze BN = Brown HG = Hunter Green DG = Dark Green RD = Red SC = Special Color (Contact Factory)	-- = Galvanize -- = Prime Paint V1 = V-PRO 1 Basic 1 Coat Powder. V2 = V-PRO 2 2 Coat Powder or Liquid. Includes epoxy primer & top coat. V3 = V-PRO 3 2 Coat Powder or Liquid. Includes zinc primer & top coat. V4 = V-PRO 4 2 Coat Powder or Liquid. Includes zinc primer & premium top coat.	See Accessories at valmontstructures.com (Please Specify)