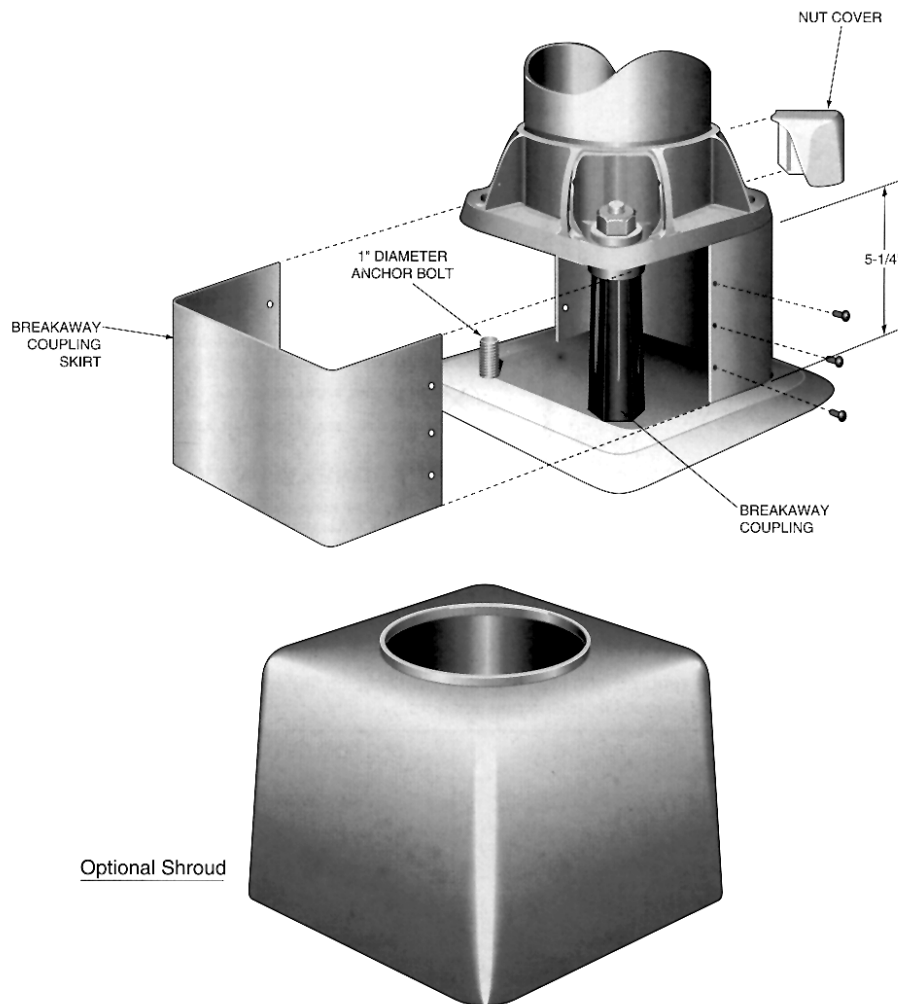


BREAKAWAY COUPLINGS



SPECIFICATIONS

Breakaway couplings are an alternative to breakaway transformer bases. They conform to current AASHTO standards for breakaway supports and are F.H.W.A. approved.

The breakaway coupling system consists of: (4) couplings with special hardware and a 2-piece aluminum skirt with attachment hardware. The lightpole bolt circle determines the model number of the skirt.

An optional fiberglass shroud replaces the nut covers and skirt. Contact your Valmont Representative or Valmont Industries, Inc., for more information.