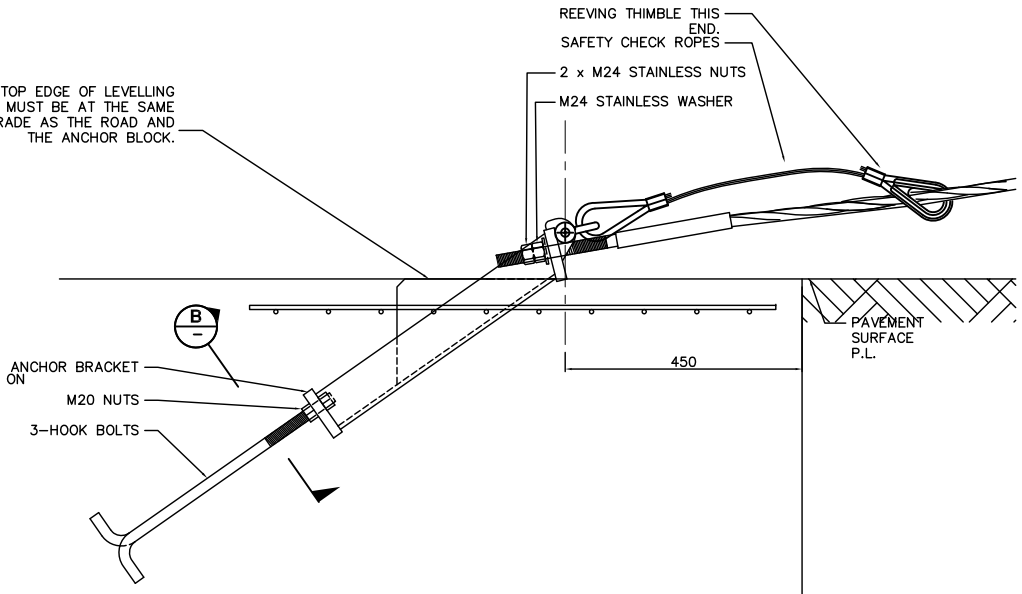
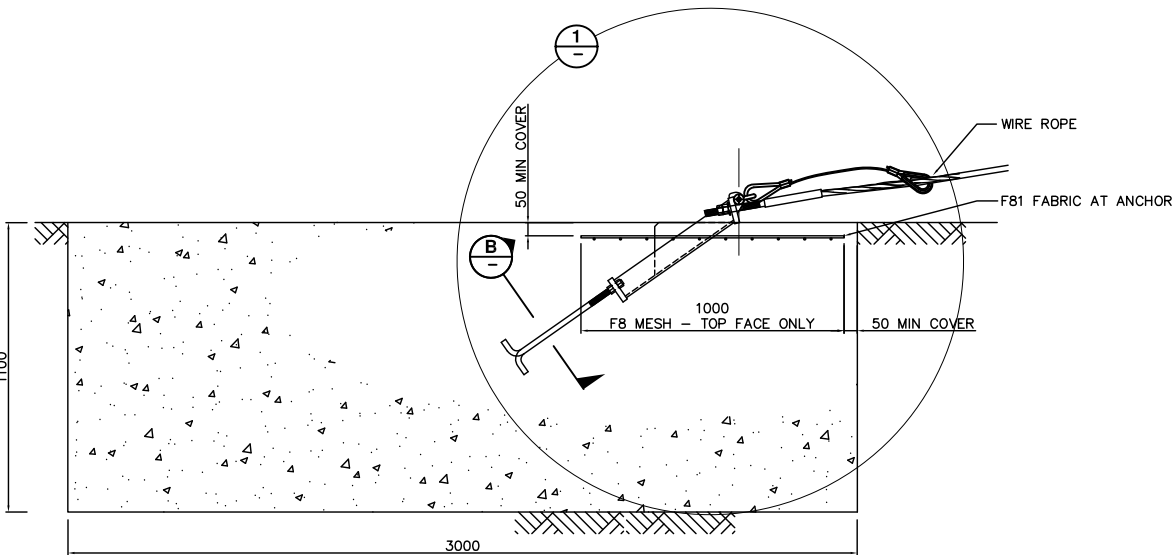


TOP EDGE OF LEVELLING PLATE MUST BE AT THE SAME GRADE AS THE ROAD AND THE ANCHOR BLOCK.

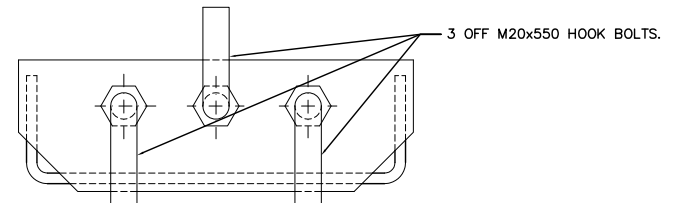


**PLAN**



**SECTION A**

**DETAIL 1**



**SECTION B**

**NOTES:**

1. COMPRESSIVE STRENGTH OF CONCRETE AT 28 DAYS SHALL BE 32MPa.
2. ALL MEASUREMENTS ARE IN mm UNLESS STATED OTHERWISE.
3. ASSUMED MATERIAL-INTERNAL ANGLE OF FRICTION  $\phi = 30^\circ$   
 $y = 19kN/m^3$   
 $C_u = 50kPa$   
 or/
4. INGAL CIVIL PRODUCTS MARKETS THIS SYSTEM UNDER THE TRADE NAME SAFENCE IN NEW ZEALAND.

REV	DATE	DESCRIPTION	DRAWN	CHECKED	APPROVED	DRAWING NUMBER	REFERENCE DRAWINGS	NAME	DATE	INGAL CIVIL PRODUCTS 57-65 AIRDS ROAD MINTO, N.S.W AUSTRALIA 2566 PH. +61 2 9827 3333 FAX +61 2 9827 3300 www.ingalcivil.com.au	PROJECT FLEXFENCE WIRE ROPE SAFETY BARRIER	INGAL CIVIL PRODUCTS REFERENCE No.
3	26/10/12	NOTE 1 32MPa WAS 25MPa	D.K.					DRAWN	AUSTEC	2/11/2011		
2	02/11/11	TITLE BLOCK UPDATED	DJB	TC	TC			CHECKED	TC	2/11/2011		
1	12/02/10	INITIAL ISSUE	MS	TC	TC			APPROVED	TC	2/11/2011		
								SCALE	NTS		TITLE RECTANGULAR (TYPE 3) ANCHOR BLOCK	DRAWING No. WR-STD-64
								SIZE	A1			