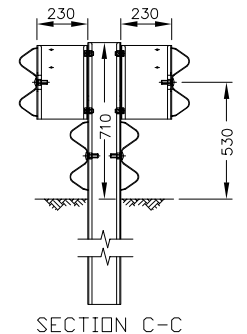
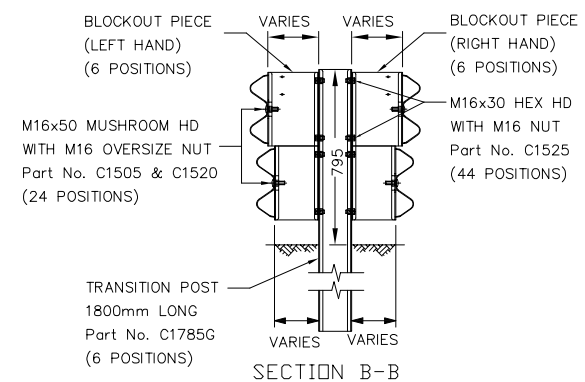
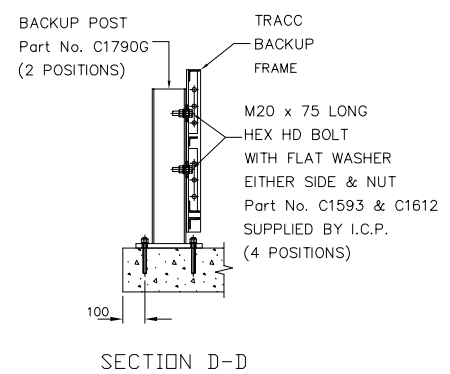
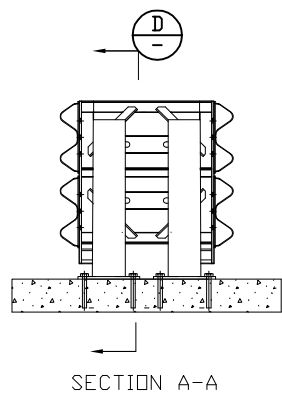
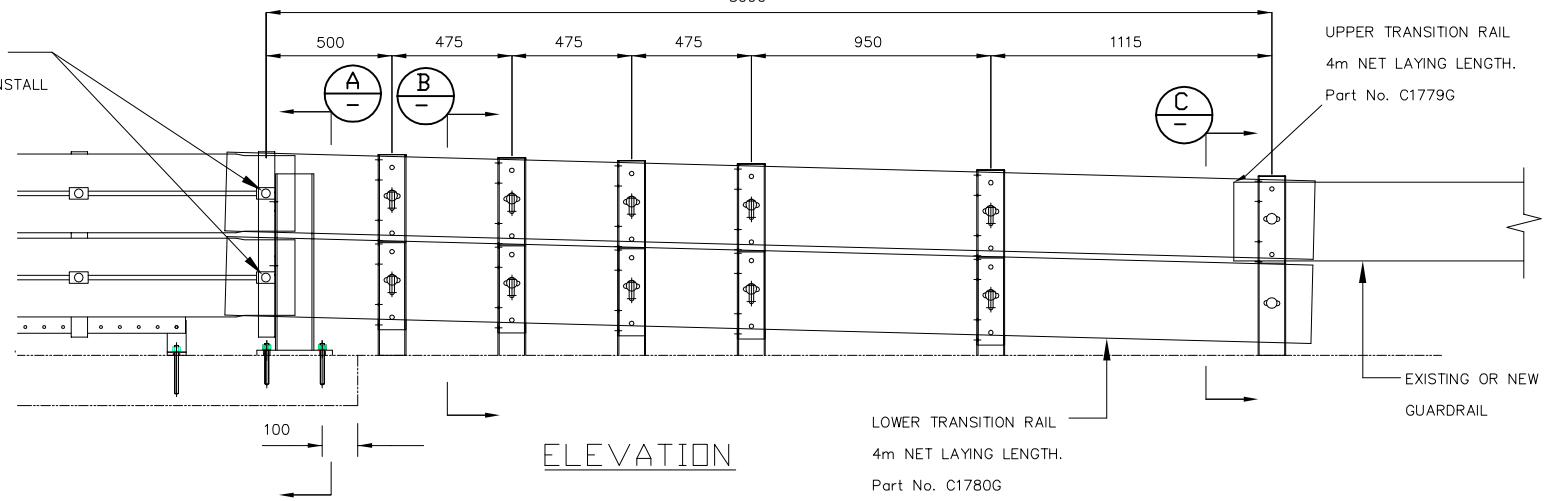


TO INSTALL TRANSITION PANELS
THE TRANSITION PANELS MUST BE PLACED BEHIND THE
FENDER PANELS OF THE TRACC SYSTEM TO INSURE
PROPER FUNCTION OF SYSTEM.

REMOVE M16 x 50 SPLICE BOLT
SUPPLIED WITH TRACC UNIT & INSTALL
M16 x 65 CONNECTING BOLT
(2 POSITIONS THIS SIDE &
2 POSITIONS OPPOSITE SIDE)



Rev	Description	Chkd	Date
0	INITIAL ISSUE	M.S	03/08/09

INGAL CIVIL PRODUCTS

INGAL Civil Products

57-65 Airds Road, Minto, NSW, 2566 Australia
Telephone 61-2-9827 3333, Facsimile 61-2-9827 3300, Internet www.ingalcivil.com.au
© Industrial Galvanizers Corporation Pty Ltd ACN 000 545 415 (2005)
This drawing is the subject of COPYRIGHT. No part of it may be used, reproduced or copied by any means or in any form without the prior permission of the owner.

PROJECT TRACC TRANSITION TO FLEXBEAM ASSEMBLY

TITLE GENERAL ARRANGEMENT

DATE 03/08/09	INGAL CIVIL PRODUCTS REFERENCE No.
DRAWN MS	
DESIGNED JCP	
CHECKED T.C.	
MATERIAL AS SHOWN	DRAWING No.
FINISH AS SHOWN	CAB-STD-092
SCALE N.T.S	REV.0