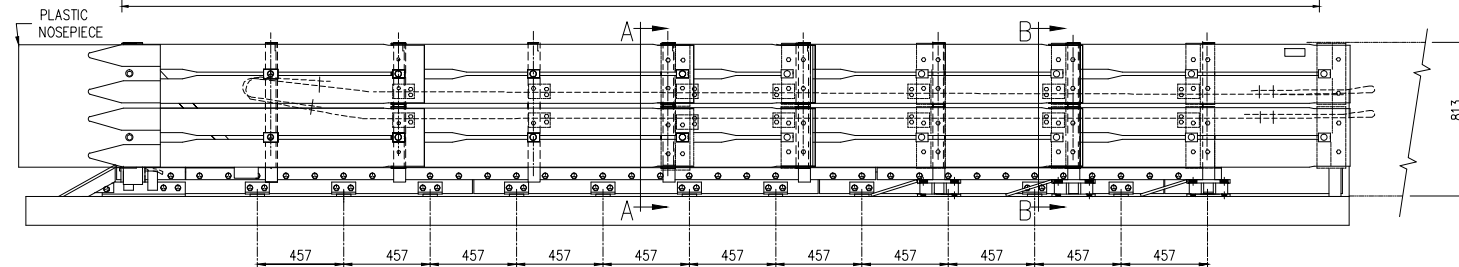
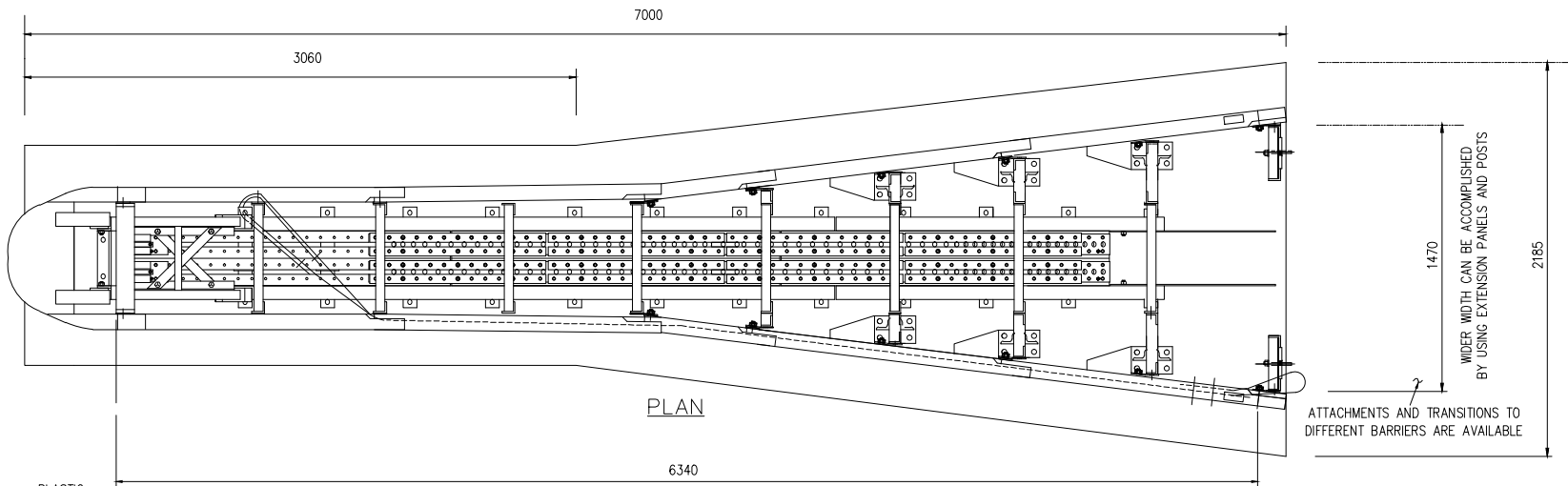
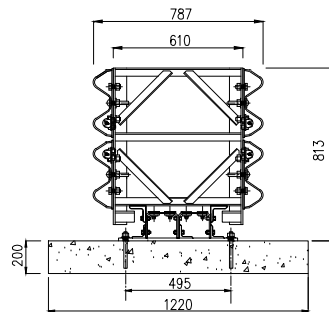


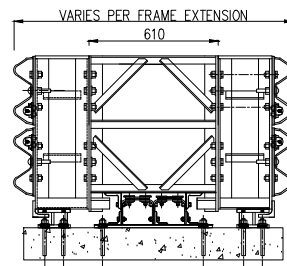
CAD FILE - CAB-STD-084.DWG 03/08/09



ELEVATION



SECTION "A-A"



SECTION "B-B"

Notes:

- 200mm UNREINFORCED CONCRETE PAD IS SHOWN.
- OTHER OPTIONS ARE:
 1. 150mm REINFORCED CONCRETE
 2. 200mm ASPHALT (MIN)
 3. 75mm ASPHALT (MIN) OVER 75mm CONCRETE (MIN)
 4. 150mm ASPHALT (MIN) OVER COMPACTED SUB-BASE
- THIS TRACC CRASH ATTENUATOR HAS BEEN APPROVED BY THE U.S. DEPARTMENT OF TRANSPORTATION FEDERAL HIGHWAY ADMINISTRATION AS CONFORMING TO NCHRP 350 TEST LEVEL 3. THIS REPORT HAS BEEN ADOPTED AS THE BASIS OF TESTING FOR AS/NZS 3845-1999 "ROAD SAFETY BARRIER SYSTEMS".
- MATERIAL GALVANISED TO CONFORM TO AS/NZS4680-2006 "HOT-DIP GALVANIZED (ZINC) COATINGS ON FABRICATED FERROUS ARTICLES".

Rev	Description	Chkd	Date
0	INITIAL ISSUE	MS	03/08/09



INGAL Civil Products

57-65 Airods Road, Minto, NSW, 2566 Australia
 Telephone 61-2-9827 3333, Facsimile 61-2-9827 3300, Internet www.ingalcivil.com.au
 c Industrial Galvanizers Corporation Pty Ltd ACN 000 545 415 (2005)
 This drawing is the subject of COPYRIGHT. No part of it may be used, reproduced or copied by any means or in any form without the prior permission of the owner.

PROJECT	1470mm WIDETRACC SYSTEM
TITLE	PLAN, ELEVATION & SECTION

DATE	03/08/09	INGAL CIVIL PRODUCTS REFERENCE No.
DRAWN	M.S	
DESIGNED	TRINITY IND.	DRAWING No. CAB-STD-084 REV.0
CHECKED	T.C	
MATERIAL	AS SHOWN	
FINISH	H.D GALV	
SCALE	N.T.S	