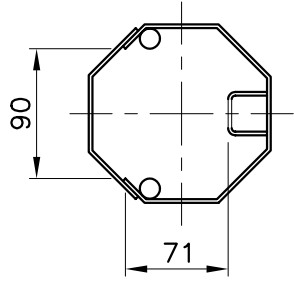


**BASEPLATE DETAIL**



**CONTROL GEAR CLEARANCES**

**NOTES:**

- 1. ALL STEEL COIL TO CONFORM TO AS/NZS 1594 GRADE HU300 U.O.N. ALL STEEL PLATES TO CONFORM TO AS/NZS 3678 GRADE 250 U.O.N.
- 2. ALL STEEL BARS AND SECTIONS TO CONFORM TO AS/NZS 3679 GRADE 250 U.O.N.
- 3. ALL WELDS TO CONFORM TO AS/NZS 1554 PART 1
- 4. ALL TAPER LOCK JOINT LENGTHS ARE NOMINAL U.O.N.
- 5. ALL STEEL TO BE FULLY HOT DIP GALVANIZED AFTER FABRICATION IN ACCORDANCE WITH AS/NZS 4680

COPYRIGHT THIS DOCUMENT PRODUCED BY INGAL EPS MUST NOT BE COPIED, TRACED, REPRODUCED, OR LENT WITHOUT WRITTEN CONSENT			
DIMENSIONS IN MILLIMETRES			
	DO NOT SCALE		
CHECKED BY <b>FP</b>	DATE <b>11/2/00</b>	DRAWN BY <b>I. WHITE</b>	SCALE <b>1:35</b>
CUSTOMER/PROJECT	CAD FILE No. <b>Z:\ACAD\STD\AVENUE\SAL55F-D30</b>		

# INGAL EPS

STREET LIGHTING

5.5m, 3m DOUBLE OUTREACH AVENUE

BASEPLATE MOUNTED

RIVERTON DESIGN

CATALOGUE NUMBER <b>SAL55FDO30</b>	DRAWING NUMBER <b>SAL55FDO30</b>
---------------------------------------	-------------------------------------