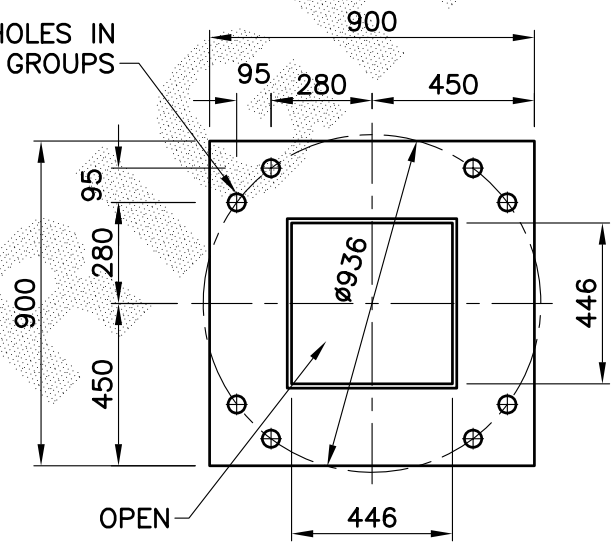


8- $\phi 48$ HOLES IN
4 GROUPS



VIEW (A)

SCALE 1:20
BASEPLATE FOR 8- M42
RAGBOLTS

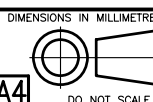
REFERENCE DRAWINGS
FOUNDATION BOLT / TEMPLATE DRAWING No. M 412
OPERATING TROLLEY DRAWING No. PL 150

NOTES:

1. ALL STEEL COIL TO CONFORM TO AS/NZS 1594 GRADE HU250 UON
ALL STEEL PLATES TO CONFORM TO AS/NZS 3678 GRADE 250 UON
2. ALL STEEL BARS AND SECTIONS TO CONFORM TO AS/NZS 3679 GRADE 250 UON
3. ALL WELDS TO CONFORM TO AS/NZS 1554 PART 1
4. ALL TAPER LOCK JOINT LENGTHS ARE NOMINAL UON
5. ALL STEEL TO BE FULLY HOT DIP GALVANIZED AFTER FABRICATION
IN ACCORDANCE WITH AS/NZS 4680

REV	DATE	DESCRIPTION	BY	CHKD
1	13/04/05	BASEPLATE & REFERENCE DETAIL ADDED	I.W.	
0	24/5/02	FIRST ISSUE	I.W.	

COPYRIGHT
THIS DOCUMENT PRODUCED
BY INGAL EPS MUST NOT
BE COPIED, TRACED,
REPRODUCED, OR LENT
WITHOUT WRITTEN CONSENT



DIMENSIONS IN MILLIMETRES
DO NOT SCALE

INGAL EPS

LOWERING SYSTEMS - POWERLIFT
30m MEDIUM DUTY TRACK RANGE
BASEPLATE MOUNTED
RIVERTON DESIGN

CATALOGUE NUMBER
PTM30F
DRAWING NUMBER
PTM30F

CHECKED BY
PFA
DATE
30/5/02

DATE
24/5/02

DRAWN BY
I. WHITE

SCALE
1:125

CAD FILE No.
Z:\ACAD\STD\POWERLIFT\PTM30F