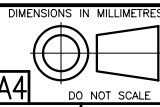


NOTES:

1. ALL STEEL COIL TO CONFORM TO AS/NZS 1594 GRADE HU300 U.O.N.
ALL STEEL PLATES TO CONFORM TO AS/NZS 3678 GRADE 250 U.O.N.
2. ALL STEEL BARS AND SECTIONS TO CONFORM TO AS/NZS 3679 GRADE 250 U.O.N.
3. ALL WELDS TO CONFORM TO AS/NZS 1554 PART 1
4. ALL TAPER LOCK JOINT LENGTHS ARE NOMINAL U.O.N.
5. ALL STEEL TO BE FULLY HOT DIP GALVANIZED AFTER FABRICATION IN ACCORDANCE WITH AS/NZS 4680

REV	DATE	DESCRIPTION	BY	CHKD
0	30/01/03	UPDATED & REDRAWN FROM PL 157	P.B.	PPA

COPYRIGHT
THIS DOCUMENT PRODUCED
BY INGAL EPS MUST NOT
BE COPIED, TRACED,
REPRODUCED, OR LENT
WITHOUT WRITTEN CONSENT



INGAL EPS

LOWERING SYSTEMS – POWERLIFT
20m MEDIUM DUTY PARK RANGE
BASEPLATE MOUNTED
RIVERTON DESIGN

CATALOGUE NUMBER
PPM20F
DRAWING NUMBER
PPM20F

CHECKED BY: PPA
DATE: 10/02/03

DATE: 30/01/03
DRAWN BY: P. BENTZEN

SCALE: 1:100

CAD FILE No.: Z:\ACAD\STD\POWERLIFT\PPM20F