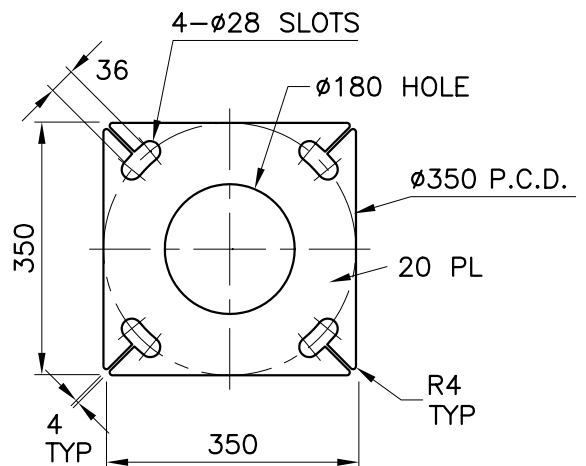


CONTROL GEAR CLEARANCES
1:10



VIEW A
SCALE 1:20
BASEPLATE FOR 4- M24 RAGBOLTS

NOTES:

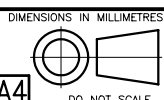
1. ALL STEEL COIL TO CONFORM TO AS/NZS 1594 GRADE HU300 U.O.N.
ALL STEEL PLATES TO CONFORM TO AS/NZS 3678 GRADE 250 U.O.N.
2. ALL STEEL BARS AND SECTIONS TO CONFORM TO AS/NZS 3679 GRADE 250 U.O.N.
3. ALL WELDS TO CONFORM TO AS/NZS 1554 PART 1
4. ALL TAPER LOCK JOINT LENGTHS ARE NOMINAL U.O.N.
5. ALL STEEL TO BE FULLY HOT DIP GALVANIZED AFTER FABRICATION IN ACCORDANCE WITH AS/NZS 4680

MAXIMUM TOP WEIGHT INCLUSIVE OF CROSSARMS AND LUMINAIRES = 85 Kg

REV	DATE	DESCRIPTION	BY	CHKD
2	30/10/03	DOOR MOUNTING DETAILS CHANGED	PB	PPA
1	19/10/99	BP, MOUNTING & APRON SECURING CHANGED	DJG	PPA
0	19/5/99	RATIONALISED DESIGN	IW	PPA

CUSTOMER/PROJECT

COPYRIGHT
THIS DOCUMENT PRODUCED BY INGAL EPS MUST NOT BE COPIED, TRACED, REPRODUCED, OR LENT WITHOUT WRITTEN CONSENT



INGAL EPS

LOWERING SYSTEMS
10m MEDIUM DUTY PARK SEESAW
BASEPLATE MOUNTED
RIVERTON DESIGN

CATALOGUE NUMBER
HPM10F
DRAWING NUMBER
HPM10F

CHECKED BY: *[Signature]* DATE: 25/6/99

DATE: 19/5/99
DRAWN BY: I. WHITE

SCALE: 1:50

CAD FILE No. Z:\ACAD\STD\PARK\HPM10F-ND