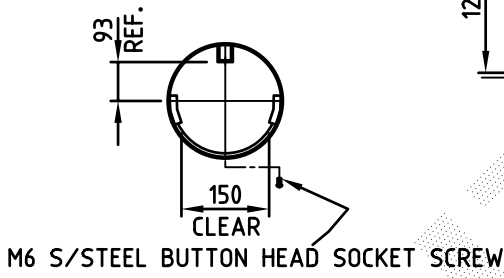


FOR GENERAL NOTES APPLICABLE TO THIS DRAWING REFER DRAWING GA1

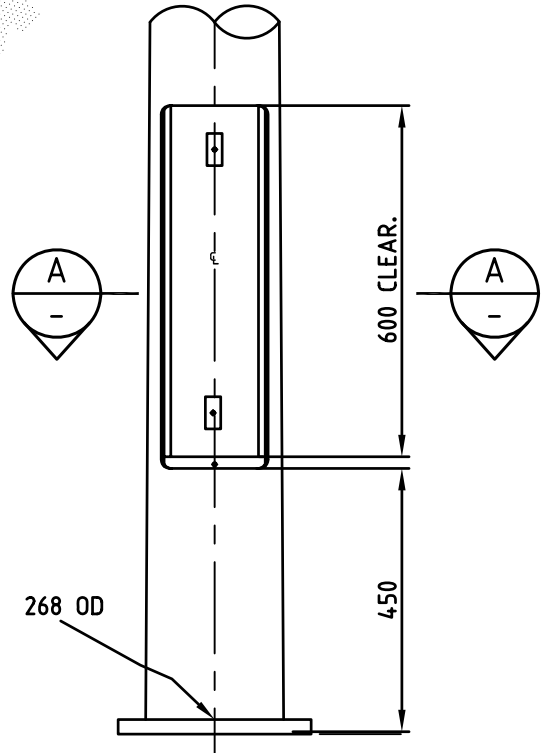
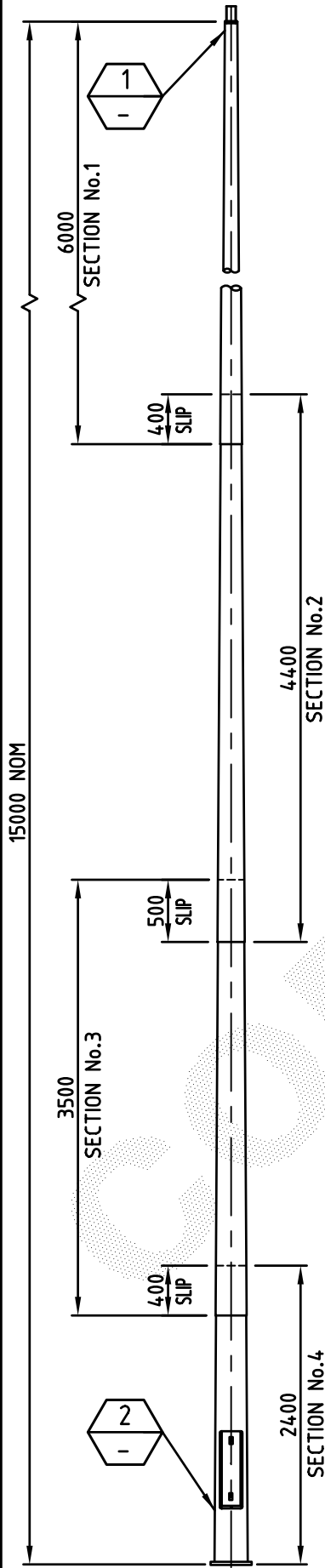
SPIGOT: 65 NB.(76.1 OD) x 120 LG.

CATENARY ROD



DETAIL 1
SCALE -NTS

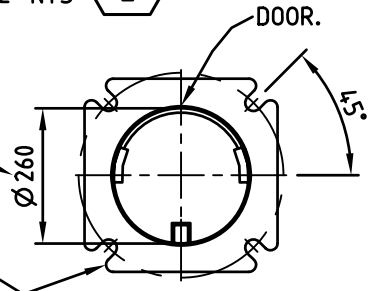
SECTION A
SCALE -NTS



DETAIL 2
SCALE -NTS

AVAILABLE FOR CABLE ACCESS.

4 SLOTS TO SUIT M30 FOUNDATION BOLTS ON 350 PCD.
BASE PLATE 350 x 350



FOR ASSEMBLY & DETAIL REFER AD297

PRODUCT WEIGHT kg 277		CUSTOMER APPROVAL DATE		COPYRIGHT THIS DOCUMENT PRODUCED BY INGAL EPS MUST NOT BE COPIED, TRACED, REPRODUCED, OR LENT WITHOUT WRITTEN CONSENT		INGAL EPS		PRODUCT NUMBER FPM15FR	
				DIMENSIONS IN MILLIMETRES		FLOODLIGHTING 15.0m. MEDIUM DUTY PARK RANGE BASE PLATE MOUNTED.		DRAWING NUMBER GA77	
0 23/06/06 ISSUED FOR CONSTRUCTION. R.S.		RE-DRAWN USING PP-STD-08-17 AS BASE DRG.		A4 DO NOT SCALE				SHEET NUMBER	
REV DATE DESCRIPTION BY CHKD		CUSTOMER NAME / PROJECT		CHECKED BY DATE 23/06/06		DATE 23/06/06		DRAWN BY R.STANLEY	
								SCALE 1:50	
								CAD FILE No GA77	