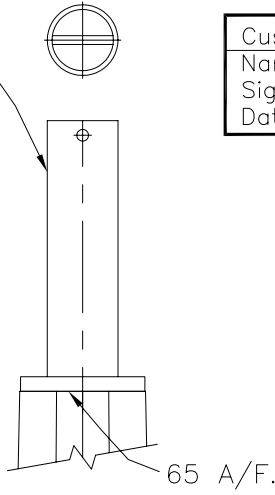
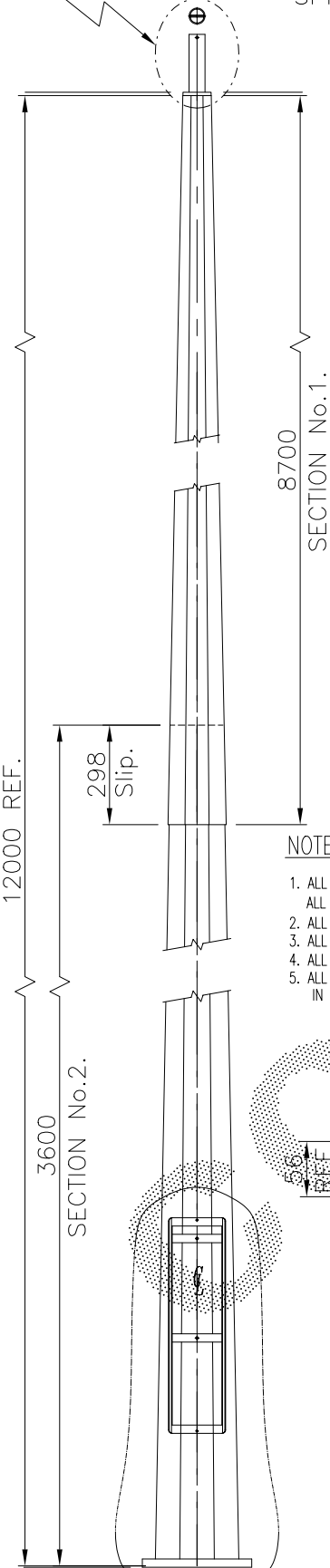


REFER DETAIL B.

SPIGOT SIZE TO BE ADVISED.

Customer Approval

Name:
Signature:
Date:

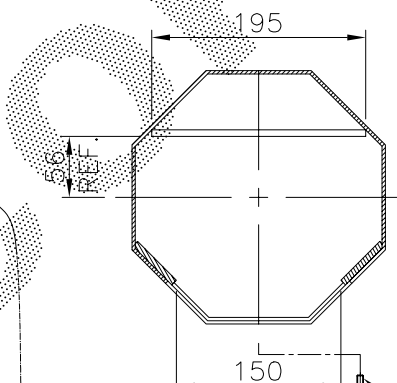


DETAIL B.
NTS.

SECTION No.1.

NOTES:

1. ALL STEEL COIL TO CONFORM TO AS/NZS 1594 GRADE HU300 U.O.N.
ALL STEEL PLATES TO CONFORM TO AS/NZS 3878 GRADE 250 U.O.N.
2. ALL STEEL BARS AND SECTIONS TO CONFORM TO AS/NZS 3679 GRADE 250 U.O.N.
3. ALL WELDS TO CONFORM TO AS/NZS 1554 PART 1
4. ALL TAPER LOCK JOINT LENGTHS ARE NOMINAL U.O.N.
5. ALL STEEL TO BE FULLY HOT DIP GALVANIZED AFTER FABRICATION
IN ACCORDANCE WITH AS/NZS 4680



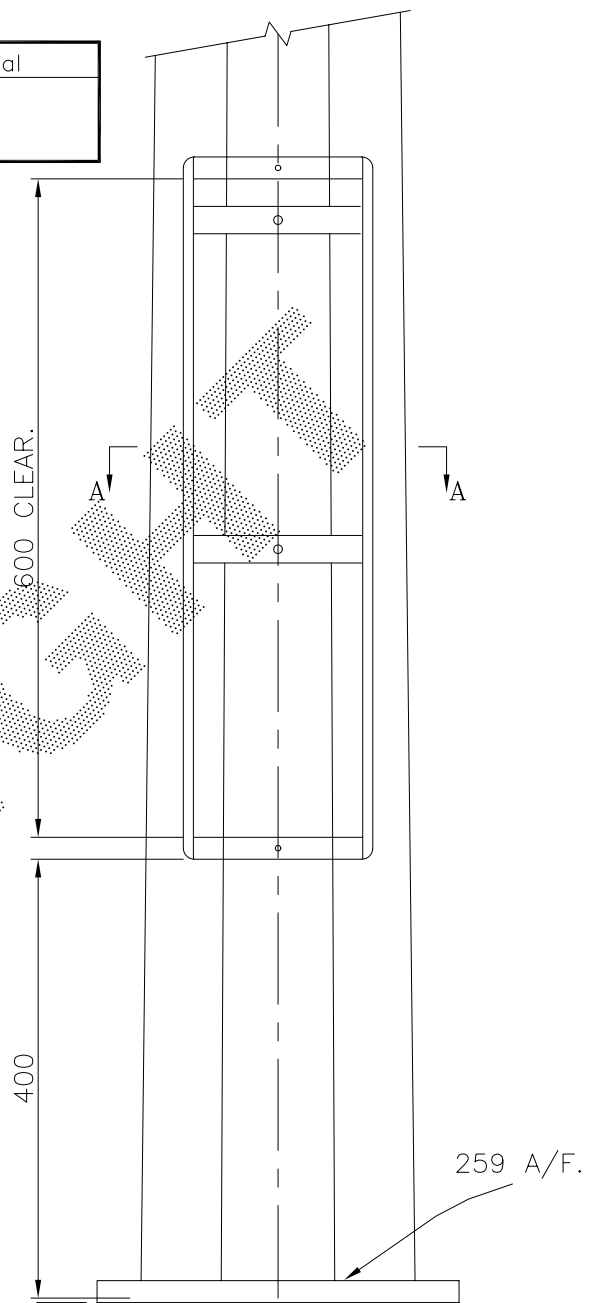
SECTION A-A.
NTS.

FINISH: HOT DIP GALVANISED.

4 slots $\varnothing 28$ equi-spaced on 350 PCD.
To suit M24 foundation bolts.
Base plate 330 x 330.

FOR ASSY. & DETAILS REFER DWG. No. PT-STD-01-05.

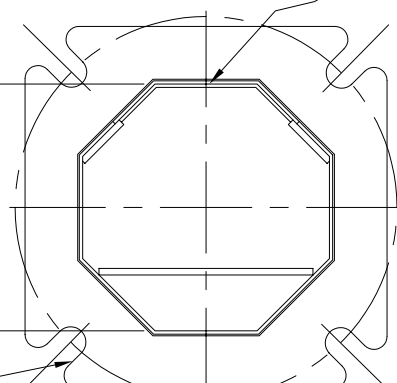
WEIGHT: 180 kg.



DETAIL A.
NTS.

AVAILABLE FOR
CABLE ACCESS.

253 A/F.



REFER
DETAIL A.

REV	DATE	DESCRIPTION	BY	CHKD
1	18/12/02	New dwg. frame added. Cat. No. was PTFPL10F.	R.S.	CJJ
0	1/2/01	ISSUED FOR CONSTRUCTION.	R.S.	QtP

COPYRIGHT
THIS DOCUMENT PRODUCED
BY INGAL EPS MUST NOT
BE COPIED, TRACED,
REPRODUCED, OR LENT
WITHOUT WRITTEN CONSENT

DIMENSIONS IN MILLIMETRES

DO NOT SCALE

CHECKED BY: QtP
DATE: 1/2/01

INGAL EPS

FLOODLIGHTING
12.0m. LIGHT DUTY PARK RANGE
BASEPLATE MOUNTED.
POLE-TECH DESIGN.

CATALOGUE NUMBER
FPL12F
DRAWING NUMBER
PT-STD-01-04

CAD FILE No.
PTSTD0104

CUSTOMER/PROJECT	DATE	DRAWN BY:	SCALE	CAD FILE No.
	1/2/01	R.S.	1:20	PTSTD0104