

Collingwood

Cast Aluminum - Clamshell
Decorative Base Cover

Features

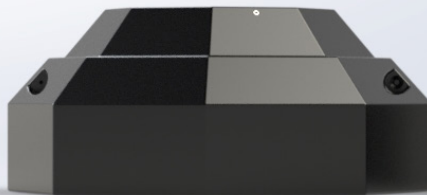
- Finely tooled details
- Light and easy to place
- Excellent impact resistance
- Wide selection of colours
- Use on all your street structures to get a consistent look
- Easy install using clamshell design
- Corrosion resistant stainless steel hardware
- Tamper proof design
- Compatible with breakaway bases for maximum safety



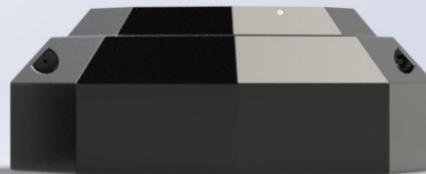
COL7AC

MODEL NUMBER	POLE BASE DIAMETER RANGE		DIMENSIONS OF BASE COVER		
	TAPERED 0.14"/FT IN MM	NON-TAPERED IN MM	DIA IN MM	HEIGHT IN MM	QTY OF ACCESS DOORS
COL1AC	7.44 189	7.44 189	16.50 419	7.09 180	0
COL7AC	8.50 216	8.50 216	16.50 419	6.30 160	0

All dimensions shown are nominal, and do not include handhole, baseplate or anchor bolt projections.



COL7AC



COL1AC