

## LP3 - Light Pole Mitigator

*First Mode Vibration Damping Device for single, double, and triple fixture poles*

**Performance** – Proven to increase damping and reduce first mode vibration of light pole structures. The LP3 damper is demonstrated in the laboratory to reduce vibration by 80% in a quiet and efficient manner. Depending on the pole size and configuration, further increased performance can be expected. Most light pole configurations will see over 50% reduction in the damaging vibrations that result in fatigue.

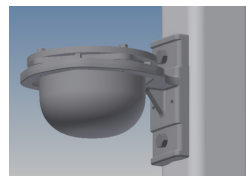
**Technology** – The Patent Pending Mitigator LP3 Damper is made from high quality corrosion-resistant materials and consists of a shot filled stainless steel ball housed within a water tight aluminum bowl chamber. This device dissipates the vibration energy through the tumbling motion of the stainless steel shot inside the bowl as it rolls along the curved surface of the bowl and the impact of the ball on the thermoplastic elastomers (TPE) lined wall of the chamber. This device operates at a very low acoustic sound level when actively dissipating energy, unlike other devices that are less effective and extremely loud in their operation.

**Mounting** - Comes standard with side mounting bracket which can be utilized for both multi-side and round pole cross sections. Locate device at the top of the pole in a location that does not interfere with the light distribution. Installation instructions are available on [valmontstructures.com](http://valmontstructures.com).

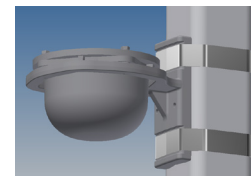
**Finish** – Comes standard in a uncoated natural aluminum and black finish. Custom liquid paint colors available at an additional charge.

**Warranty** – 1 year standard warranty

### Details – Pole mounting bracket and attachment details



**Bolts with Nut Plate**  
For existing poles, pole top access & adequate internal pole clearance must be available. Field drilled holes required.



**Stainless Steel Banding** (by others)



### Product Ordering Codes \_\_\_\_\_

MODEL NUMBER	STANDARD COLOR OPTION	MOUNTING OPTION
LP3		
	NT = Natural BK = Black SC = Special Color (Specify - additional charge)	BAND = Stainless Steel Bands (bands by others) BOLT = Bolts with Nut Plate (additional charge)

Job Name: _____
Job Location - City: _____ State: _____
Quote: _____
Client Name: _____
Created By: _____ Date: _____
Customer Approval: _____ Date: _____