

# BECAUSE SIMPLER IS BETTER

The need for more wireless communication infrastructure doesn't have to be complex. Over the years, our monopoles have proven time and again that simpler is better. Our monopoles' sleek design, simple construction and small footprint continue to define the industry. Available in a variety of finishes and lengths (up to 60 metres), our monopoles are ideal for local visual, zoning and climate demands.

## SUPPORTING COMMUNICATION LOADS

Valmont's steel monopoles are designed for cellular, PCS, line mobile, microwave, broadcast and other applications. These monopoles can be configured to support platforms and a variety of curved arms, straight arms and other antennae mounting hardware. They can also be designed to accommodate multiple carriers and microwave antennae.

## STRUCTURAL FEATURES

Monopoles that support Microwave Antennae are designed using the allowable test and sway limits as specified in the EIA standard (ANSI/TIA-222-H). Special deflection requirements can also be met when specified by the customer.

- Pole shafts are fabricated from low-alloy, high strength steel specification from IS 2062, ASTM A 572, ASTM A 36 and BSEN 10025.
- Anchor bolt material complies with ASTM A325, IS 1367 and IS 1786.
- All poles are hot-dipped galvanized after fabrication per ASTM A 123/153, BSEN ISO 1461 and IS 4759.
- Each shaft section is a constant-tapered multisided hollow steel section up to 16m in length (or 11.8m for shipping purposes).
- Slip joints are designed with a minimum of 1.5 times the inside pole diameter of female section at the splice.
- Base plates are welded to the pole shaft using top and bottom circumferential welds, or using a full-penetration weld.
- Anchor bolts are provided loose with setting templates.
- Anchor Plate design is available if anchor bolt lengths are limited.



# ENGINEERED FOR DESIGN FLEXIBILITY

Our tower and monopole products are renowned for their durable designs and serve as the backbone for modern wireless communications. With design, production and customer service operations in Pune, Further, with our global presence, we are uniquely qualified to serve our international customers by offering local technical expertise backed by global design, engineering and production resources.

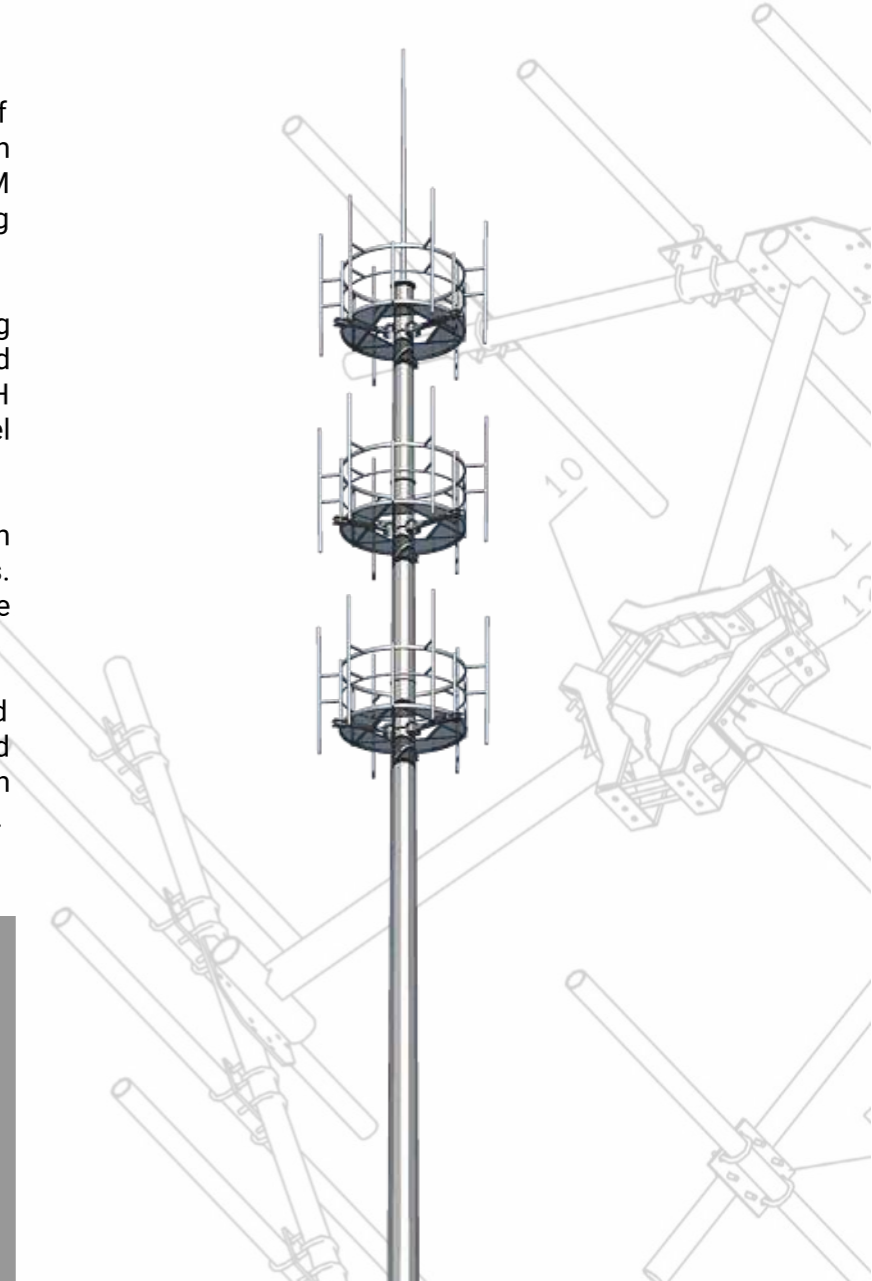
## DESIGN & ENGINEERING

Valmont's in-house capabilities include state of the art computer design technics using proven structural engineering software. CAD-CAM systems are available to assist in design, drafting activities and 3D modeling.

As an international industry, our engineering team applies domestic and recognized international standards such as ANSI/TIA-222-H with latest addendums as well as steel construction standards.

Structures must be designed such that deflection and rotation do not exceed allowable limits. These limits are a function of antenna types, size and frequency.

To complete a full design computation, we need to consider standard selected for design, wind definition and wind speed, type and specification of the antennas selected, deflection and rotation.



## PLATFORMS & CLIMBING EQUIPMENT

### Platforms

Valmont® proposes triangular and round platforms as well as custom-designed platforms depending on customer specific requirements.

#### Round platform advantages

- Antenna pipe mounts can be distributed over 360 degrees
- Anchor bolts orientation can be easily verified
- Azimuth can easily be obtained
- Installation can be completed at the ground level to save time.

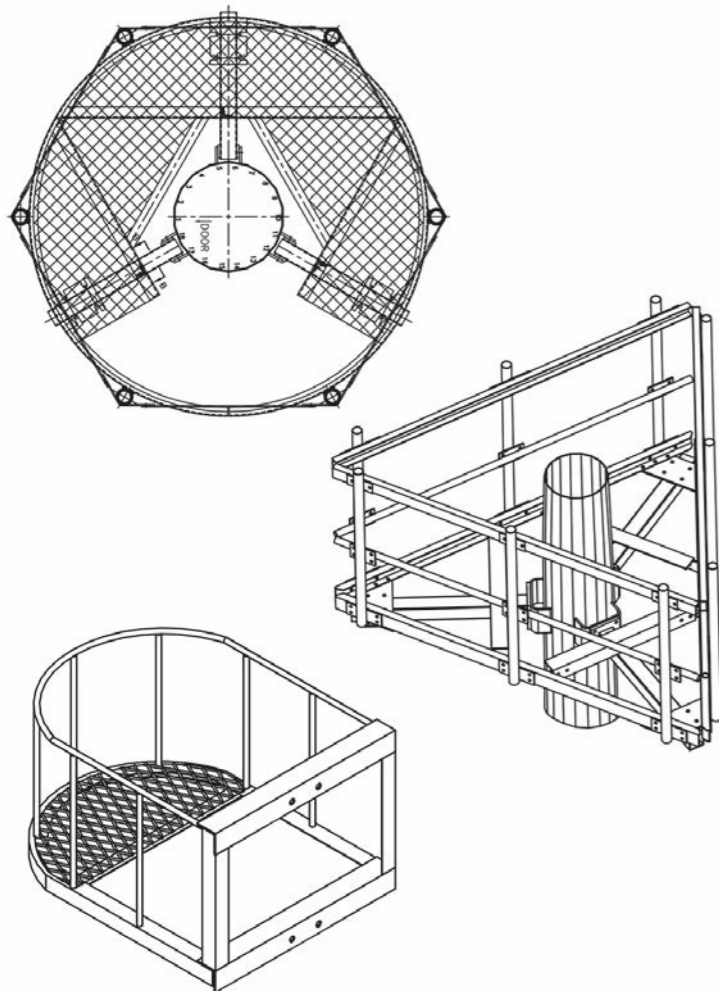
#### Triangular platforms

These can also be rotated in order to perfectly match the desired orientation. Antenna pipe mounts are provided with all our poles.

Foot platform can be added at any location along the poles for resting.

### Climbing Equipment

Add on step bolts, outside climbing ladders, and rail-type safety climb devices are available as accessories.



## CAMOUFLAGED MONOPOLES

Today's municipalities and permitting groups can make it difficult to obtain approval for wireless communication infrastructure in areas where aesthetics are of high importance. For these situations Valmont® offers creative solutions designed to blend in with the landscape and the surrounding environment.

Our camouflage telecom structures minimize environmental clutter owing to their unique designs that are a perfect mix of creativity and innovation catering to a range of different product lines complying with the latest technology and environmental demands.



## MINIMUM VISUAL IMPACT STRUCTURES

Growing in popularity, our decorative camouflaged poles, from a selection of palm or coconut tree designs may be a great option for your application to create solutions for the wireless industry that conform to demanding community standards.

Monopalm made to resemble palm trees constitute a main structure that is a galvanized steel monopole, painted or covered with an epoxy barks, with tree branches and artificial foliage outfitted on the top section.

Other applications include disguised water towers, clock towers, flag poles, clock towers, bell towers, fire towers, small cell (5G capability) both concealing unsightly antennae and other wireless equipment.

## INTERNATIONAL PROJECTS

Take a second look at our full line of decorative Minimum Visual Impact (MVI) structures, combining aesthetically pleasing designs with the latest technological advancements.



SMALL CELL

## SITE SERVICES

Valmont® provides sit survey, foundation inspection, assembly and erection of structures. Additionally, we also provide structure and foundation design, feasibility study for modification of existing structures can also be provided depending on requirement.



CLOCK TOWER



WATER TANK

## VALMONT FACTORIES

The success of Valmont's international facilities in increasing the Indian customer base led to the establishment of a world-class manufacturing plant at the Indapur Industrial Estate, near Pune, Maharashtra, India in 2011 and Panchmahal District in Halol, Gujarat in 2018. With a full-service engineering team located at our headquarters in Magarpatta, Pune, customers can rely on us to develop tailored solutions catering to their specific needs. As a member of the Valmont® global family, Valmont Structures in India is dedicated to the same company-wide values : passion for quality, excellence, integrity and positive results.



To know more about products manufactured by Valmont® Structures in India, please visit our website [www.valmont.in](http://www.valmont.in)

Find us on Facebook  [www.facebook.com/valmont.india](http://www.facebook.com/valmont.india)

Follow us on  @ValmontIndia

### Corporate Office

Valmont Structures Pvt. Ltd.  
Unit 203, 2nd Floor, Pentagon 4,  
Magarpatta City, Hadapsar,  
Pune- 411013, Maharashtra, India  
Tel: +91-20-66664141  
[marketingindia@valmont.com](mailto:marketingindia@valmont.com)

### Factory at Halol

Valmont Structures Pvt. Ltd.  
Plant Survey No. 189-193  
Village- Chandrapura,  
Tal: Halol-389350,  
Dist: Panchmahal, Gujarat, India  
Tel: +91-2676-226616

### Factory at Indapur

Valmont Structures Pvt. Ltd.  
A-20, Indapur Industrial Area,  
M.I.D.C., Indapur  
Pune- 413132, Maharashtra, India  
Tel: +91-2111-252000  
[sales.india@valmont.com](mailto:sales.india@valmont.com)

Copyright © Valmont Structures Pvt. Ltd. All Rights Reserved. This document is the sole property of Valmont Structures Pvt. Ltd. No part of this document may be reproduced, stored in a retrieval system, or transmitted in any form or by any means - electronic, mechanical, photocopying, recording or otherwise - without prior written permission of the concerned authority. © All Rights Reserved.