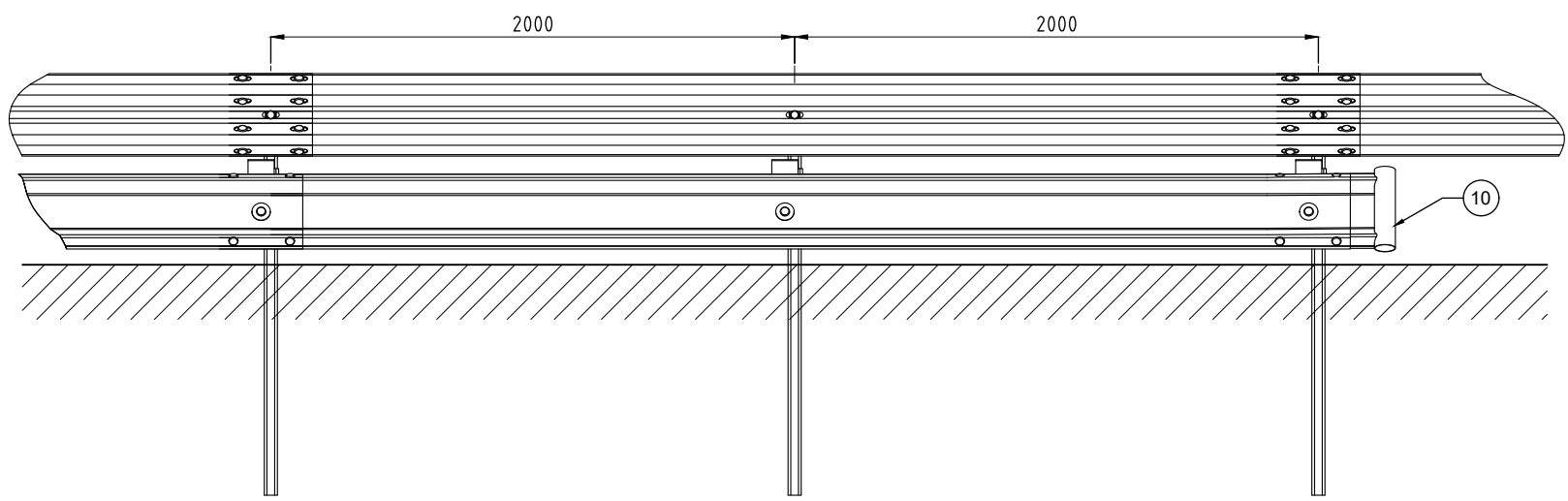
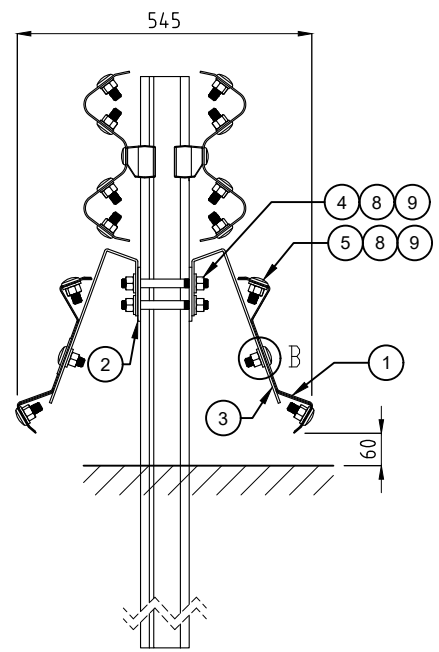
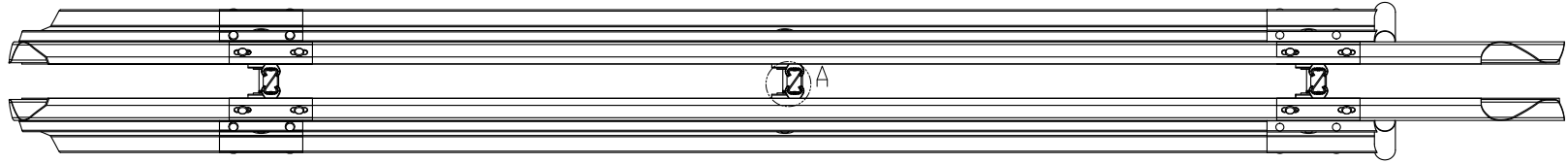
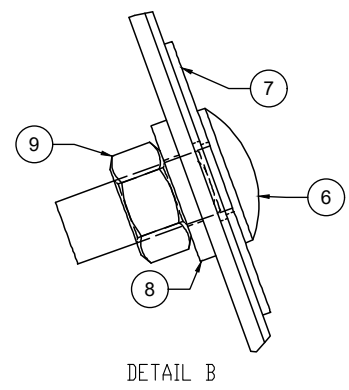
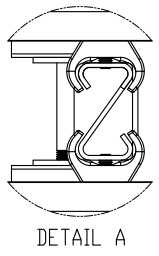


| EZY-GUARD - MPR MEDIAN CONFIG - BoM (4 m) | | | |
|---|-----|-------------|-------------------------------------|
| ITEM | QTY | PART NUMBER | DESCRIPTION |
| 1 | 2 | 10006773 | Motorcyclist protection beam |
| 2 | 2 | 10007332 | Z-Post Bracket |
| 3 | 4 | 10006772 | Rail mounting bracket |
| 4 | 4 | 10008536 | M16x150 Stud |
| 5 | 8 | 10001248 | Round head bolt M16x32 |
| 6 | 4 | 10006769 | Round head bolt M16x40 |
| 7 | 4 | 10006771 | Slot Washer $\phi 70 \times 2$ |
| 8 | 20 | 10006770 | Washer $\phi 35 \times 17 \times 4$ |
| 9 | 20 | 10001254 | M16 nut |
| 10 | 2 | 10006767 | MPR END TERMINAL |



- NOTES:
- ALL STEELWORK TO BE HOT DIP GALVANISED AFTER FABRICATION TO AS/NZS 4680 AND STRAIGHTENED AFTER GALVANISING IF REQUIRED.
 - TO BE READ IN CONJUNCTION WITH INGAL PRODUCT MANUAL

| REV | DATE | DESCRIPTION | DRAWN | CHECKED | APPROVED |
|-----|------------|---------------------------------------|-------|---------|----------|
| 4 | 15-03-2024 | OVERSIZE NUT REPLACED BY STANDARD NUT | KZ | MW | KZ |
| 3 | 18-10-2021 | DM CORRECTION | VB | LG | LG |
| 2 | 29-06-2020 | ITEM 9 UPDATED | VB | LG | LG |
| 1 | 21-06-2017 | STUD UPDATED | LG | AS | LG |

| REV | DATE | DESCRIPTION | DRAWN | CHECKED | APPROVED |
|-----|------------|---------------------------------------|-------|---------|----------|
| 4 | 15-03-2024 | OVERSIZE NUT REPLACED BY STANDARD NUT | KZ | MW | KZ |
| 3 | 18-10-2021 | DM CORRECTION | VB | LG | LG |
| 2 | 29-06-2020 | ITEM 9 UPDATED | VB | LG | LG |
| 1 | 21-06-2017 | STUD UPDATED | LG | AS | LG |

| REV | DATE | DESCRIPTION | DRAWN | CHECKED | APPROVED |
|-----|------------|---------------------------------------|-------|---------|----------|
| 4 | 15-03-2024 | OVERSIZE NUT REPLACED BY STANDARD NUT | KZ | MW | KZ |
| 3 | 18-10-2021 | DM CORRECTION | VB | LG | LG |
| 2 | 29-06-2020 | ITEM 9 UPDATED | VB | LG | LG |
| 1 | 21-06-2017 | STUD UPDATED | LG | AS | LG |

| REV | DATE | DESCRIPTION | DRAWN | CHECKED | APPROVED |
|-----|------------|---------------------------------------|-------|---------|----------|
| 4 | 15-03-2024 | OVERSIZE NUT REPLACED BY STANDARD NUT | KZ | MW | KZ |
| 3 | 18-10-2021 | DM CORRECTION | VB | LG | LG |
| 2 | 29-06-2020 | ITEM 9 UPDATED | VB | LG | LG |
| 1 | 21-06-2017 | STUD UPDATED | LG | AS | LG |

| REV | DATE | DESCRIPTION | DRAWN | CHECKED | APPROVED |
|-----|------------|---------------------------------------|-------|---------|----------|
| 4 | 15-03-2024 | OVERSIZE NUT REPLACED BY STANDARD NUT | KZ | MW | KZ |
| 3 | 18-10-2021 | DM CORRECTION | VB | LG | LG |
| 2 | 29-06-2020 | ITEM 9 UPDATED | VB | LG | LG |
| 1 | 21-06-2017 | STUD UPDATED | LG | AS | LG |

| REV | DATE | DESCRIPTION | DRAWN | CHECKED | APPROVED |
|-----|------------|---------------------------------------|-------|---------|----------|
| 4 | 15-03-2024 | OVERSIZE NUT REPLACED BY STANDARD NUT | KZ | MW | KZ |
| 3 | 18-10-2021 | DM CORRECTION | VB | LG | LG |
| 2 | 29-06-2020 | ITEM 9 UPDATED | VB | LG | LG |
| 1 | 21-06-2017 | STUD UPDATED | LG | AS | LG |

INGAL CIVIL PRODUCTS
57-65 AIRDS ROAD
MINTO, N.S.W
AUSTRALIA 2566
PH: +61 2 9827 3333
FAX: +61 2 9827 3300
www.ingalcivil.com.au

DRAWING AND CONTENTS ARE COPYRIGHT TO INGAL CIVIL PRODUCTS AND CAN ONLY BE USED WITH PRIOR WRITTEN CONSENT FROM INGAL CIVIL PRODUCTS

| REV | DATE | DESCRIPTION | DRAWN | CHECKED | APPROVED |
|-----|------------|---------------------------------------|-------|---------|----------|
| 4 | 15-03-2024 | OVERSIZE NUT REPLACED BY STANDARD NUT | KZ | MW | KZ |
| 3 | 18-10-2021 | DM CORRECTION | VB | LG | LG |
| 2 | 29-06-2020 | ITEM 9 UPDATED | VB | LG | LG |
| 1 | 21-06-2017 | STUD UPDATED | LG | AS | LG |

| REV | DATE | DESCRIPTION | DRAWN | CHECKED | APPROVED |
|-----|------------|---------------------------------------|-------|---------|----------|
| 4 | 15-03-2024 | OVERSIZE NUT REPLACED BY STANDARD NUT | KZ | MW | KZ |
| 3 | 18-10-2021 | DM CORRECTION | VB | LG | LG |
| 2 | 29-06-2020 | ITEM 9 UPDATED | VB | LG | LG |
| 1 | 21-06-2017 | STUD UPDATED | LG | AS | LG |