

Ingal MPR

Motorcyclist Protection

Product Manual

MASH TL3 COMPLIANT

EN1317-8 COMPLIANT



Release 03/24

www.ingalcivil.com.au

1.0 Introduction

The Ingal Motorcyclist Protection Rail (Ingal MPR) is a protective enhancement installed on existing four-wheel vehicle restraint systems to reduce the chances of serious injury to motorcyclists and pillion passengers in run-off-road accidents.

Traditional highway safety barriers installed on the road carriageways to restrain vehicles from impacting roadside hazards, these typically take the form of the W-Beam rail supported by a series of posts. These posts introduce a significant hazard to an errant motorcyclist in a run-off-road accident. The Ingal MPR consists of an under-riding rail which is mounted on a spring bracket. Upon impacting this rail, the spring bracket deflects back absorbing some of the impact energy from the motorcyclist, whilst the rail contains and re-directs the motorcyclist away from the rigid posts and hazards.

2.0 Specification

Ingal MPR Rail Length:	4m NLL
4m MPR Rail Mass:	12.3kg
Ingal MPR System Mass:	4.65kg per metre
Rail Height Above Ground:	60mm
Post Spacing:	2m or 2.5m
Ingal MPR Crash Test Impact Severity:	Level 1

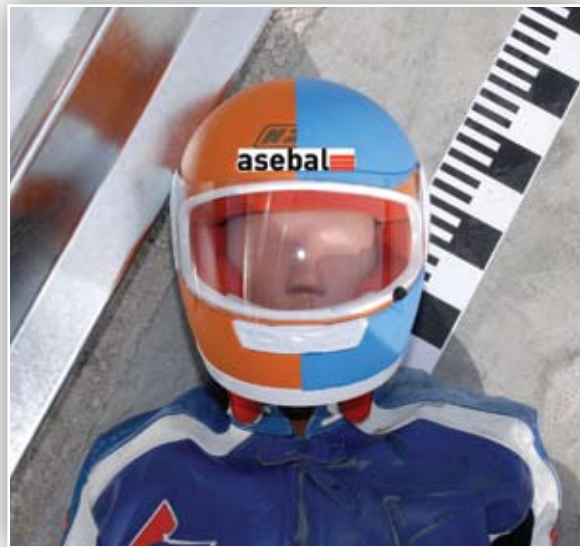
The Ingal MPR rails and brackets are manufactured from hot-rolled steel flat products in accordance with AS/NZS1594. These items are hot dip galvanised in accordance with AS/NZS 4680 after fabrication leaving no surface untreated.

3.0 Crash Test Analysis

Crash test guidelines provide a minimum set of requirements that a roadside barrier has to meet in order to demonstrate its satisfactory impact performance. Whilst crash test guidelines cannot include all possible impact conditions that may be experienced in the real world, the crash test matrix is selected to represent a "worst practical condition" for a roadside barrier impact. The Ingal MPR system has been fully crash tested and evaluated according to Standards UNE 135900-1 and 2 and UNE EN-1317-1 and 2, and has produced satisfactory results in the following full scale crash tests. **The dummy tests recorded an impact severity of Level 1 which is the lowest severity for this testing standard.**

- TM1.6.0: Dummy to post, 60 km/h 30° angle of impact.
- TM.3.60: Dummy to point on barrier midway between posts, 60 km/h 30° angle of impact.

Ingal MPR has also been crash tested to MASH Test Level 3, this is the containment of a 2270kg utility and 1100kg car at 100 km/h.



4.0 Features and Benefits

- The specially designed anchoring system fully facilitates the positioning of the guard rail at the correct height, ensuring a uniform distance from the ground throughout the run and compensating for uneven terrain and height differences in the existing barriers. The mounting bracket also allows the motorcyclists rail to be raised to match alterations in the level of the road surface.
- The motorcyclist rail can be assembled and raised without the need to modify the traditional vehicle barrier system
- More space between the system and the ground (60mm), allowing water drainage, snow clearance, cleaning of hard shoulders, etc.
- The mounting bracket is symmetric, and is therefore the same for both the right and left side of the carriageway.
- Small number of components and ease of installation make the system very cost-effective.

5.0 Product Storage

All posts and rails are hot dip galvanized in accordance with AS/NZS 4680. It is important that stored galvanized work is stacked so that each item is well ventilated and can adequately drain rainwater from its surfaces.

Poor storage can give rise to wet storage stain (white rust) which is caused by water (rain or condensation) in badly drained or ventilated conditions. This can occur very quickly, particularly in warm, humid conditions.

6.0 Installation

The specially designed anchoring system facilitates the positioning of the guard rail at the correct height, allowing deflection of the system when impacted.

Only items provided by Ingal are to be used for the installation of the Ingal MPR. The following written instructions are to be read in conjunction with Ingal's drawings. A generic Safe Work Method Statement is available upon request for installation operations.

6.1 Site Preparation

This site should be prepared free of obstructing vegetation and other hazards that may interfere with the installation or operational performance of the system. Some sites may require minor grading if installed beyond the edge of the pavement shoulder.



6.2 Assembly

Refer detailed assembly drawings to end of this manual. Typical assembly steps as follows.

6.2.1 Assembly with Post Bracket

Step 1a Assembly should be initiated with placing the post bracket around the guardrail posts, particular care should be taken to ensure the bracket is oriented in the correct direction with the open side facing the oncoming traffic for verge installations.

Step 2a Attach the rail bracket to the post bracket with the M16 x 190 Hex Bolts. Typically the rail bracket will need to be abutting the underside of the block in the G4 guardrail system for convenient assembly. Tighten all fasteners to snug tight.



Motorcyclist Protection Rail
10006773



"C" post bracket
10006774



Rail Mounting Bracket
10006772



Ø35x17x4 mm Washer
10006773



M16x30 oval headed bolt
10001248



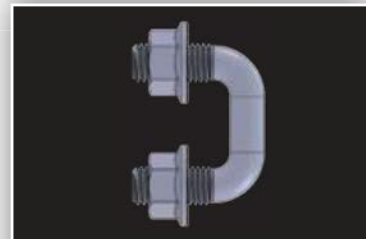
M16x200 hex bolt
10001228



2 mm thick Ø70 washer with 30x18 mounting hole - 10006771



M16x40 oval headed bolt
10006769



M12 Metric Square U Bolt & Nut Kit
10010370



M16 nut
10007834

6.2.2 Assembly with U-Bolt (Ezy-Guard 4 only)

Step 1b Assembly should be initiated with placing the M12 U-Bolt into the guardrail posts with specific pre-drilled mounting holes. The bolt will be inserted from the inside to the outside of the Z-post

Step 2b Attach the rail mounting bracket to the U-Bolt and secure to post via two flanged M12 flanged bolts. Typically the rail bracket will need to be abutting the underside of the block in the G4 guardrail system for convenient assembly. Tighten all fasteners to snug tight.

6.2.3 Assembly of Ingal MPR Rail

Step 3 Mount the rail on the rail brackets with the appropriate fastener configuration. Before tightening, ensure a 60mm clearance between finished ground level and MPR rail.

Step 4 Terminate beginning and end of run with MPR terminal piece.

6.3 Curved Installations

The MPR rails can be field curved down to a radius of 26m. Rails can be machine curved down to a radius of 12m. Contact your local Ingal office for details.

Ingal MPR Installation Checklist

Customer:

Project:

Barrier ID:

Barrier Length:

Checked By:

Signed:

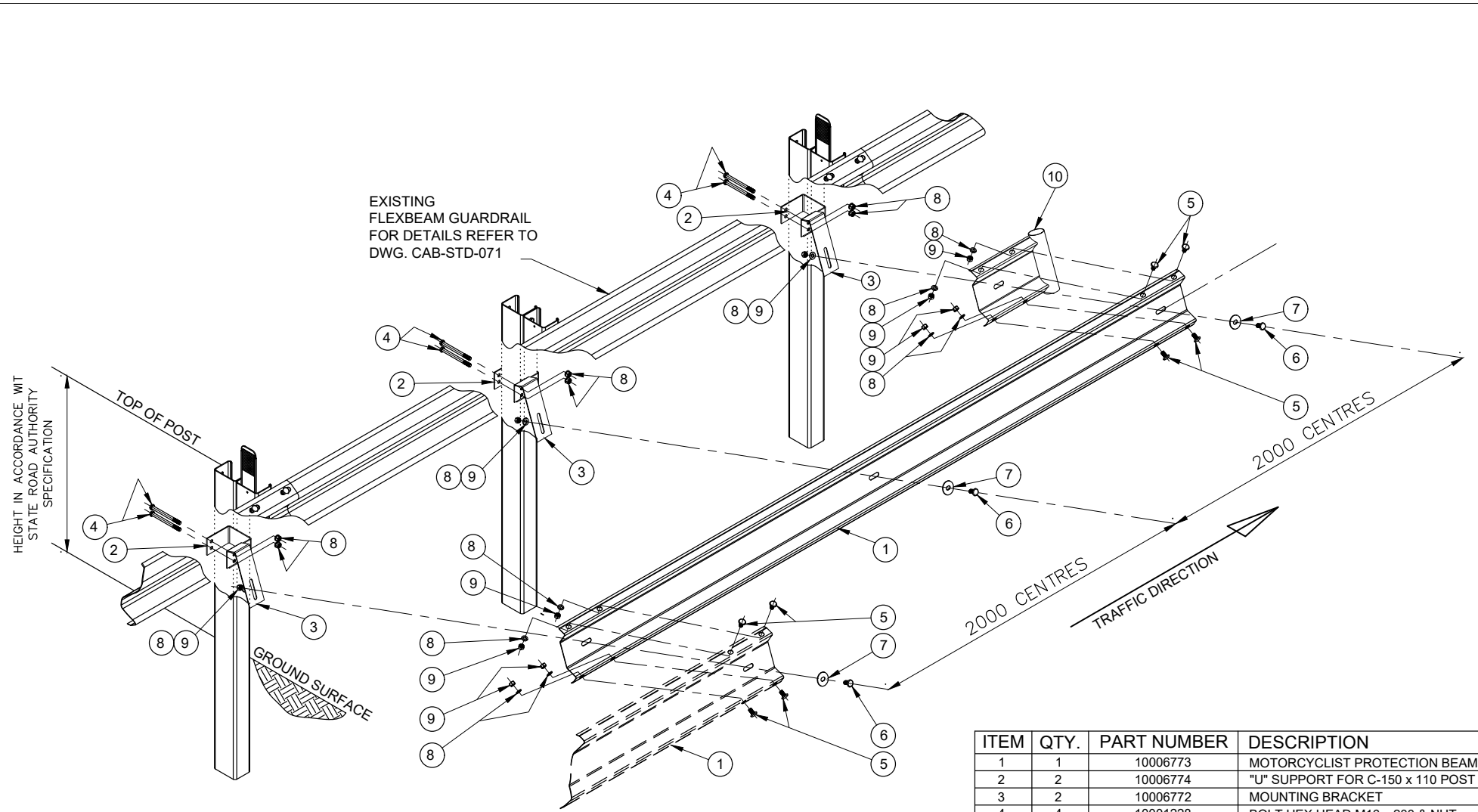
Date

Is the MPR rail ground clearance within tolerance of 60mm \pm 20mm	<input type="checkbox"/> Yes	<input type="checkbox"/> No
Has each end of the run been terminated with an MPR Terminal End	<input type="checkbox"/> Yes	<input type="checkbox"/> No
Have all fasteners been tightened to snug tight	<input type="checkbox"/> Yes	<input type="checkbox"/> No
Has a \varnothing 70 x 2mm slot washer been used on the traffic side of the rail mounting	<input type="checkbox"/> Yes	<input type="checkbox"/> No
Has a \varnothing 35 x 17 x 4mm washer been used on the verge side of the rail mounting	<input type="checkbox"/> Yes	<input type="checkbox"/> No
Has any minor damage been repaired using two coats of an organic zinc rich paint	<input type="checkbox"/> Yes	<input type="checkbox"/> No
Is the barrier system free from humps, sags or other irregularities	<input type="checkbox"/> Yes	<input type="checkbox"/> No
Are the barrier components free from splits, burrs or sharp edges after installation	<input type="checkbox"/> Yes	<input type="checkbox"/> No
Does the barrier form a smooth line vertically and horizontally when viewed along the run	<input type="checkbox"/> Yes	<input type="checkbox"/> No

Notes

Disclaimer:

Important Note: The conformity of the installation is the responsibility of the installation contractor, and Ingal Civil Products accepts no liability for or in connection with any installation that is outside of the specifications of this manual or the Road Controlling Authority. For more information, please refer to our Standard Terms and Conditions of Sale available on our website: www.ingalcivil.com.au.




ITEM	QTY.	PART NUMBER	DESCRIPTION
1	1	10006773	MOTORCYCLIST PROTECTION BEAM
2	2	10006774	"U" SUPPORT FOR C-150 x 110 POST
3	2	10006772	MOUNTING BRACKET
4	4	10001228	BOLT HEX HEAD M16 x 200 & NUT
5	4	10001248	BOLT ROUND HEAD M16 x 32
6	2	10006769	BOLT ROUND HEAD M16 x 40
7	2	10006771	WASHER FLAT Ø 70 x 2
8	10	10006770	WASHER FLAT Ø 35 x 17 x 4
9	6	10001254	NUT HEX M16 GRADE 8.8
11	1	10006767	END TERMINAL

REV	DATE	DESCRIPTION	DRAWN	CHECKED	APPROVED
8	15-03-2024	OVERSIZE NUT REPLACED BY STANDARD NUT	KZ	MW	KZ
7	18-07-2022	BOM UPDATED	KZ	LG	LG
6	29-06-2020	ITEM 9 UPDATED	VB	LG	LG
5	11-11-2016	WASHER RELOCATION	LG		
4	31-08-2016	BOM CORRECTION - ITEM 9	MC		
3	20-07-2015	BOM CORRECTION - ITEM 10	LG		
2	17-06-2015	BOM CORRECTION - ITEM 8	LG		
1	02/07/2014	FIRST ISSUE	A.R.	L.G.	

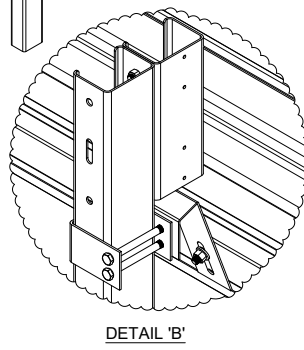
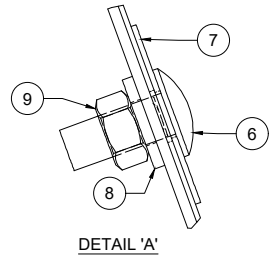
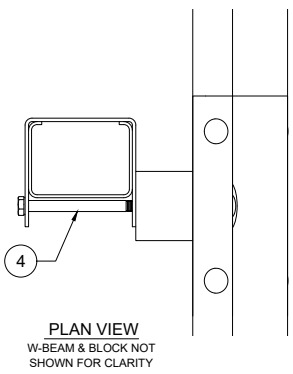
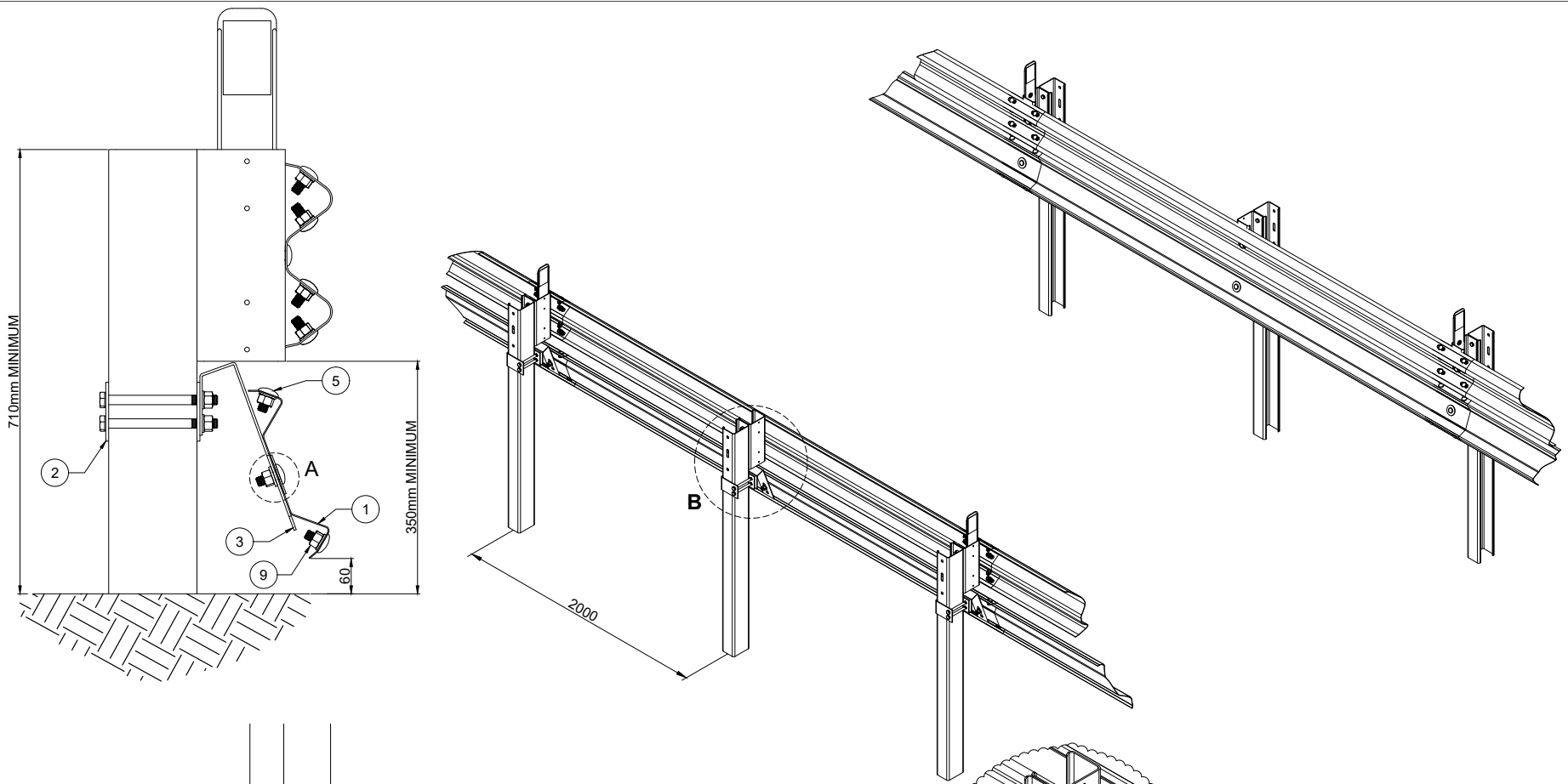
REV	DATE	DESCRIPTION	DRAWN	CHECKED	APPROVED
8	15-03-2024	OVERSIZE NUT REPLACED BY STANDARD NUT	KZ	MW	KZ
7	18-07-2022	BOM UPDATED	KZ	LG	LG
6	29-06-2020	ITEM 9 UPDATED	VB	LG	LG
5	11-11-2016	WASHER RELOCATION	LG		
4	31-08-2016	BOM CORRECTION - ITEM 9	MC		
3	20-07-2015	BOM CORRECTION - ITEM 10	LG		
2	17-06-2015	BOM CORRECTION - ITEM 8	LG		
1	02/07/2014	FIRST ISSUE	A.R.	L.G.	

NAME	DATE
DRAWN A.R.	02/07/2014
CHECKED LG	04/07/2014
APPROVED LG	04/07/2014
SCALE N.T.S. @ A3	
ISSUE FOR INFORMATION ONLY	

 INGAL CIVIL PRODUCTS 57-55 AIRDS ROAD MINTO, N.S.W AUSTRALIA 2566 PH. +61 2 9827 3333 FAX +61 2 9827 3300 www.ingalcivil.com.au	PROJECT TITLE INGAL MPR MOTORCYCLIST PROTECTION G4 CONFIGURATION EXPLODED ISOMETRIC ASSEMBLY
---	--

INGAL CIVIL PRODUCTS PART No. 10006851	DRAWING No. ICP-MPR-001
--	----------------------------

F:\ENGINEERING\SALES & MARKETING\DRAWINGS\INGAL MPR\ICP-MPR-001 - G4 ISO EXPLODED.DWG



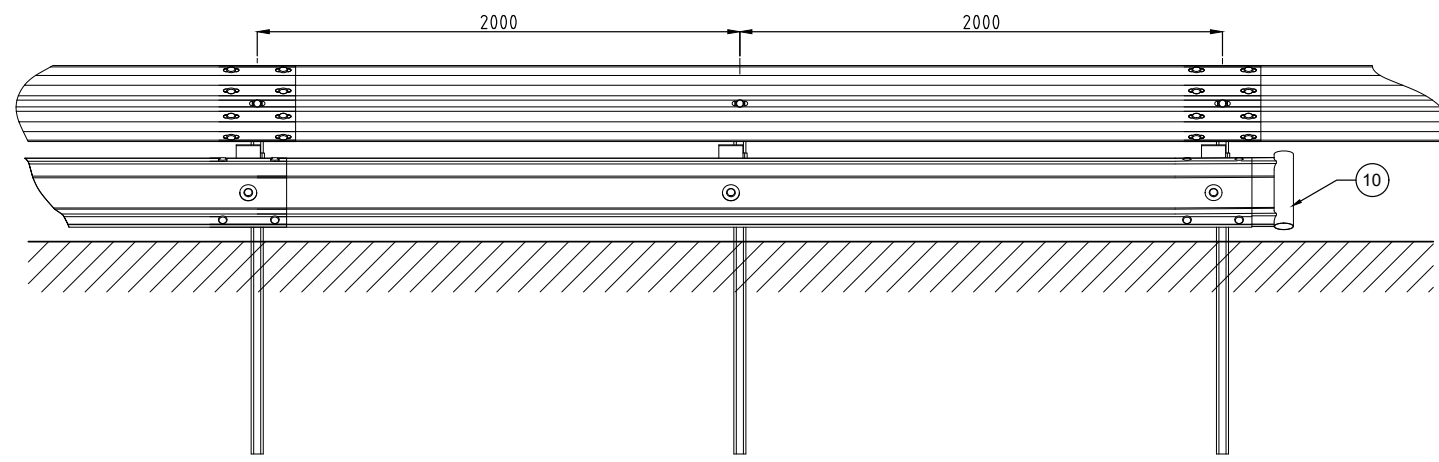
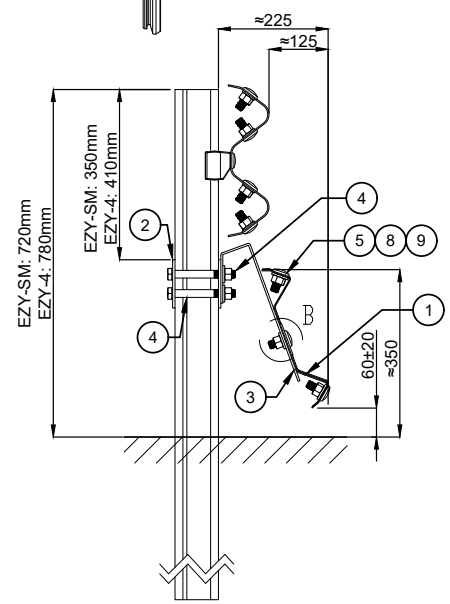
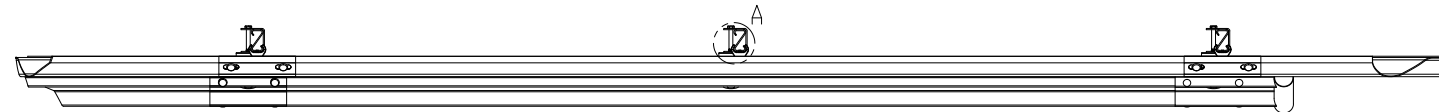
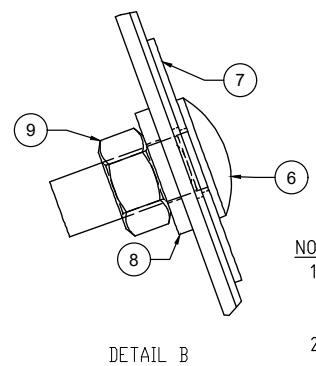
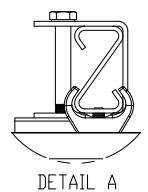
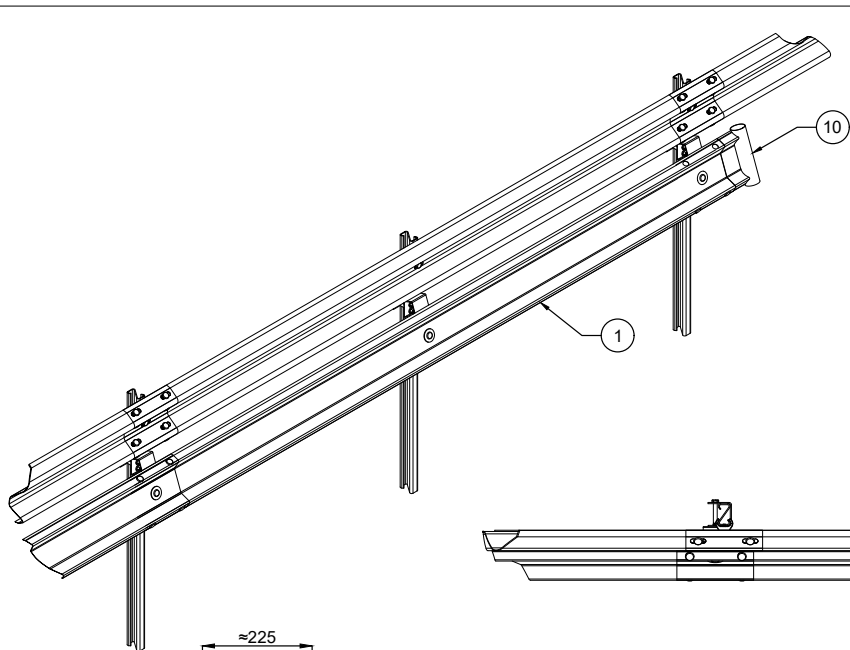
G4 CONFIG - MPR BILL OF MATERIALS (4 m)			
ITEM	QTY	PART NUMBER	DESCRIPTION
1	1	10006773	Motorcyclist protection beam
2	2	10006774	MPS C-Post Bracket
3	2	10006772	Rail mounting bracket
4	4	10001228	M16x190 hex bolt
5	4	10001248	Round head bolt M16x32
6	2	10006769	Round head bolt M16x40
7	2	10006771	Slot Washer $\phi 70 \times 2$
8	10	10006770	Washer $\phi 35 \times 17 \times 4$
9	6	10001254	M16 nut Grade 8.8

REV	DATE	DESCRIPTION	DRAWN	CHECKED	APPROVED	DRAWING NUMBER	REFERENCE DRAWINGS	NAME	DATE	PROJECT	TITLE	INGAL CIVIL PRODUCTS PART No.
7	15-03-2024	OVERSIZE NUT REPLACED BY STANDARD NUT	KZ	MW	KZ							10006851
6	18-07-2022	BOM UPDATED	KZ	LG	LG			DRAWN	LG	23-09-2013		
5	05-08-2021	MIN HEIGHT DIMS ADDED	VB	LG	LG			CHECKED				
4	29-06-2020	ITEM 9 UPDATED	VB	LG	LG			APPROVED				
3	31-08-2016	BOM CORRECTION - ITEM 9	MC					SCALE	N.T.S. @ A3		MOTORCYCLIST PROTECTION INGAL MPR G4 CONFIGURATION	ICP-MPR-002
2	20-07-2015	BOM CORRECTION - ITEM 8	LG					ISSUE FOR	INFORMATION ONLY			

INGAL CIVIL PRODUCTS
57-65 AIRDS ROAD
MINTO, N.S.W
AUSTRALIA 2566
PH. +61 2 9827 3333
FAX +61 2 9827 3300
www.ingalcivil.com.au

DRAWING AND CONTENTS ARE COPYRIGHT TO
INGAL CIVIL PRODUCTS AND CAN ONLY BE USED
WITH PRIOR WRITTEN CONSENT FROM INGAL CIVIL
PRODUCTS

F:\ENGINEERING\SALES & MARKETING\DRAWINGS\INGAL_MPR\ICP-MPR-002_G4_ASSEMBLED.DWG



EZY-GUARD CONFIG - MPR BILL OF MATERIALS (4 m)			
ITEM	QTY	PART NUMBER	DESCRIPTION
1	1	10006773	Motorcyclist protection beam
2	2	10007332	Z-Post Bracket
3	2	10006772	Rail mounting bracket
4	4	10003618	M16x130 Bolt, Nut & Washer
5	4	10001248	Round head bolt M16x32
6	2	10006769	Round head bolt M16x40
7	2	10006771	Slot Washer ϕ 70x2
8	6	10006770	Washer ϕ 35x17x4
9	6	10001254	M16 nut Grade 8.8
10	1	10006767	MPR END TERMINAL

- NOTES:
1. ALL STEEL WORK TO BE HOT DIP GALVANISED AFTER FABRICATION TO AS/NZS 4680 AND STRAIGHTENED AFTER GALVANISING IF REQUIRED.
 2. TO BE READ IN CONJUNCTION WITH THE INGAL MPR PRODUCT MANUAL.

REV	DATE	DESCRIPTION	DRAWN	CHECKED	APPROVED
10	15-03-2024	OVERSIZE NUT REPLACED BY STANDARD NUT	KZ	MW	KZ
9	18-07-2022	BOM UPDATED	KZ	LG	LG
8	26-05-2021	SECTION DIMS ADDED	VB	LG	LG
7	29-06-2020	ITEM 8 UPDATED	VB	LG	LG
6	25-05-2017	DIMS CORRECTION	LG	BM	LG
5	25-05-2017	DIMS ADDED	MC	LG	MC
4	22-11-2016	WASHER QTY REDUCED	LG	MC	LG
3	17-11-2016	BOM CORRECTION	LG	MC	LG

REV	DATE	DESCRIPTION	DRAWN	CHECKED	APPROVED
10	15-03-2024	OVERSIZE NUT REPLACED BY STANDARD NUT	KZ	MW	KZ
9	18-07-2022	BOM UPDATED	KZ	LG	LG
8	26-05-2021	SECTION DIMS ADDED	VB	LG	LG
7	29-06-2020	ITEM 8 UPDATED	VB	LG	LG
6	25-05-2017	DIMS CORRECTION	LG	BM	LG
5	25-05-2017	DIMS ADDED	MC	LG	MC
4	22-11-2016	WASHER QTY REDUCED	LG	MC	LG
3	17-11-2016	BOM CORRECTION	LG	MC	LG

REV	DATE	DESCRIPTION	DRAWN	CHECKED	APPROVED
10	15-03-2024	OVERSIZE NUT REPLACED BY STANDARD NUT	KZ	MW	KZ
9	18-07-2022	BOM UPDATED	KZ	LG	LG
8	26-05-2021	SECTION DIMS ADDED	VB	LG	LG
7	29-06-2020	ITEM 8 UPDATED	VB	LG	LG
6	25-05-2017	DIMS CORRECTION	LG	BM	LG
5	25-05-2017	DIMS ADDED	MC	LG	MC
4	22-11-2016	WASHER QTY REDUCED	LG	MC	LG
3	17-11-2016	BOM CORRECTION	LG	MC	LG

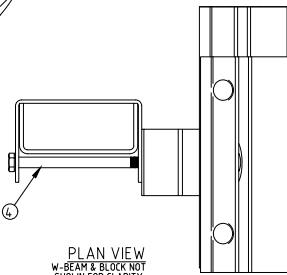
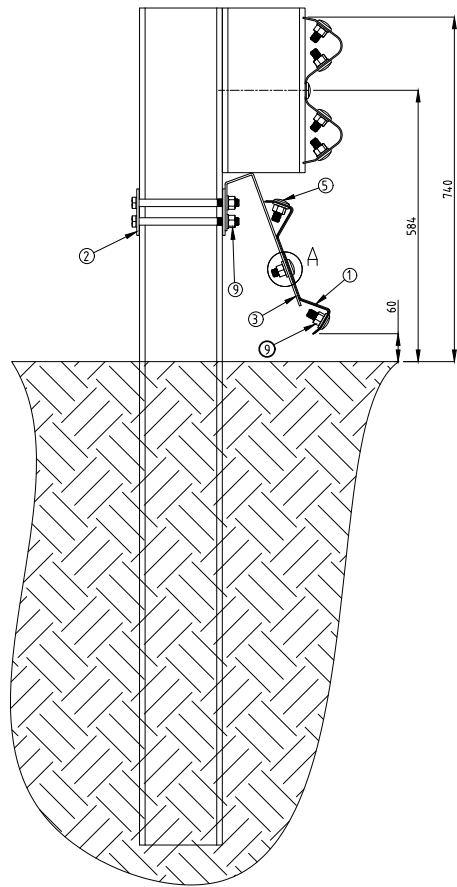
REV	DATE	DESCRIPTION	DRAWN	CHECKED	APPROVED
10	15-03-2024	OVERSIZE NUT REPLACED BY STANDARD NUT	KZ	MW	KZ
9	18-07-2022	BOM UPDATED	KZ	LG	LG
8	26-05-2021	SECTION DIMS ADDED	VB	LG	LG
7	29-06-2020	ITEM 8 UPDATED	VB	LG	LG
6	25-05-2017	DIMS CORRECTION	LG	BM	LG
5	25-05-2017	DIMS ADDED	MC	LG	MC
4	22-11-2016	WASHER QTY REDUCED	LG	MC	LG
3	17-11-2016	BOM CORRECTION	LG	MC	LG

REV	DATE	DESCRIPTION	DRAWN	CHECKED	APPROVED
10	15-03-2024	OVERSIZE NUT REPLACED BY STANDARD NUT	KZ	MW	KZ
9	18-07-2022	BOM UPDATED	KZ	LG	LG
8	26-05-2021	SECTION DIMS ADDED	VB	LG	LG
7	29-06-2020	ITEM 8 UPDATED	VB	LG	LG
6	25-05-2017	DIMS CORRECTION	LG	BM	LG
5	25-05-2017	DIMS ADDED	MC	LG	MC
4	22-11-2016	WASHER QTY REDUCED	LG	MC	LG
3	17-11-2016	BOM CORRECTION	LG	MC	LG

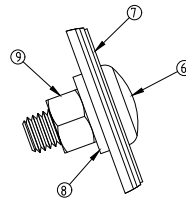
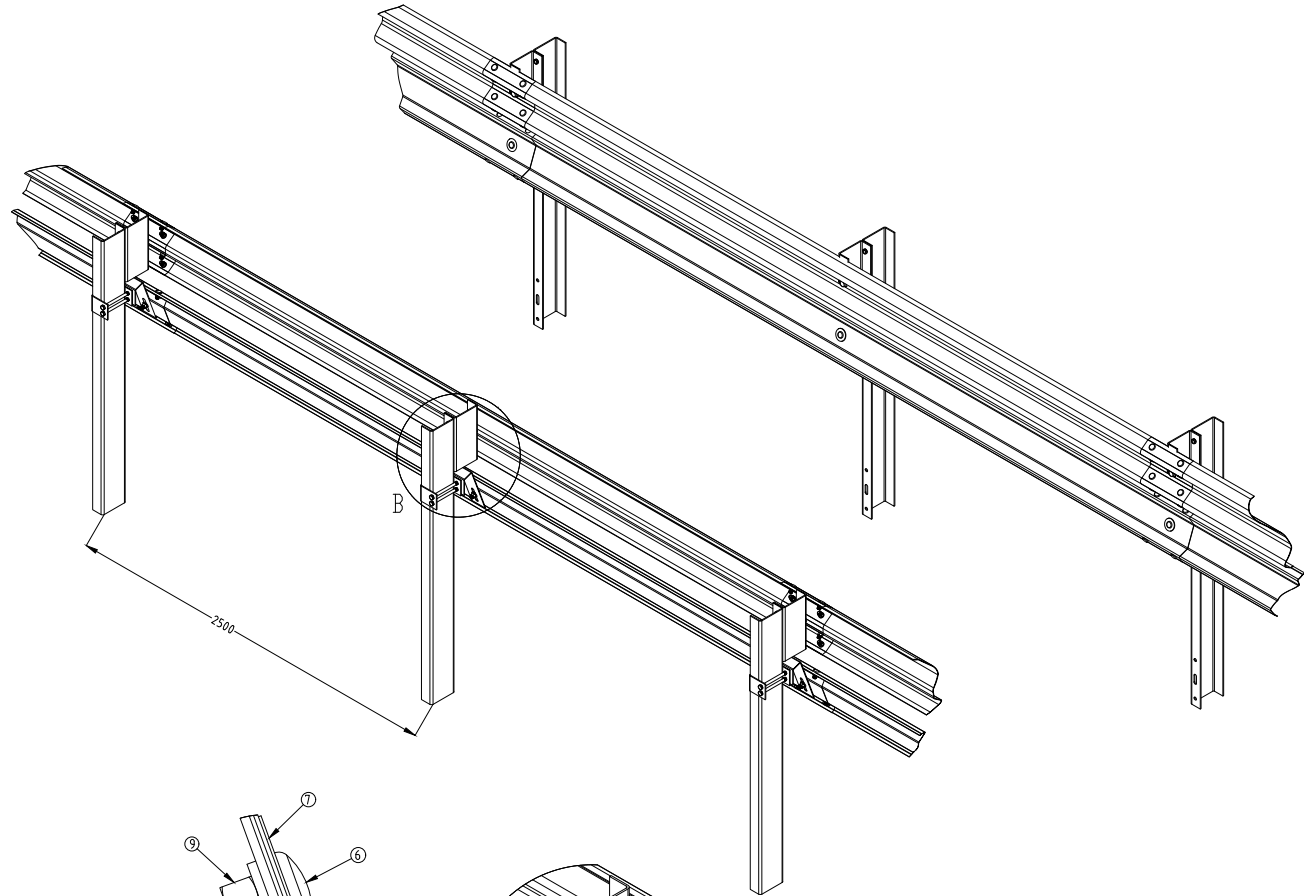
REV	DATE	DESCRIPTION	DRAWN	CHECKED	APPROVED
10	15-03-2024	OVERSIZE NUT REPLACED BY STANDARD NUT	KZ	MW	KZ
9	18-07-2022	BOM UPDATED	KZ	LG	LG
8	26-05-2021	SECTION DIMS ADDED	VB	LG	LG
7	29-06-2020	ITEM 8 UPDATED	VB	LG	LG
6	25-05-2017	DIMS CORRECTION	LG	BM	LG
5	25-05-2017	DIMS ADDED	MC	LG	MC
4	22-11-2016	WASHER QTY REDUCED	LG	MC	LG
3	17-11-2016	BOM CORRECTION	LG	MC	LG

F:\ENGINEERING\SALES & MARKETING\DRAWINGS\INGAL MPR\ICP-MPR-003 - EZY-GUARD WITH MPR LMG

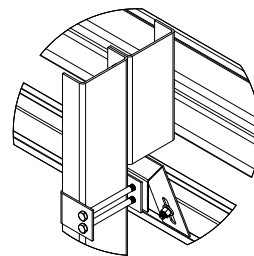
Release 03/24



PLAN VIEW
W-BEAM & BLOCK NOT
SHOWN FOR CLARITY



DETAIL A
1 : 2



DETAIL B
2 : 25

TYPE B - U-POST - BILL OF MATERIALS				
ITEM	QTY	PART No	DESCRIPTION	
1	1	10007376	Motorcyclist protection beam 5m NLL	
2	2	10006768	MPS U-Post bracket	
3	2	10006772	Rail mounting bracket	
4	4	10004064	M16x220 HEX HEAD BOLT GALV	
5	4	10001248	Round head bolt M16x32	
6	2	10006769	Round head bolt M16x40	
7	2	10006771	Slot washer ϕ 70x2	
8	10	10006770	Washer ϕ 35x17x4	
9	10	10001254	M16 nut Grade 8.8	

REV	DATE	DESCRIPTION	DRAWN	CHECKED	APPROVED
3	18-07-2022	BOM UPDATED	KZ	LG	LG
2	29-06-2020	ITEM 9 UPDATED	VB	LG	LG
1	30-10-2015	BOM UPDATED	MC	LG	LG
0	11-12-2014	ORIGINAL ISSUE	AR	LG	LG

REFERENCES	DRAWING NUMBER	REFERENCE DRAWINGS

NAME	DATE
DRAWN A.R.	11-12-2014
CHECKED LG	11-12-2014
APPROVED LG	11-12-2014
SCALE N.T.S. @ A3	
ISSUE FOR INFORMATION ONLY	

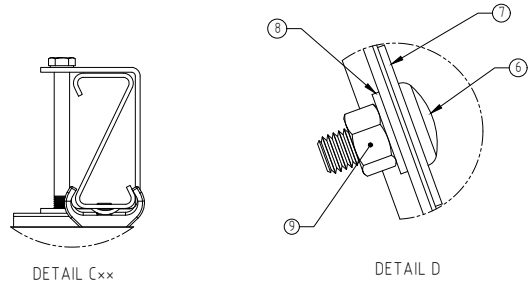
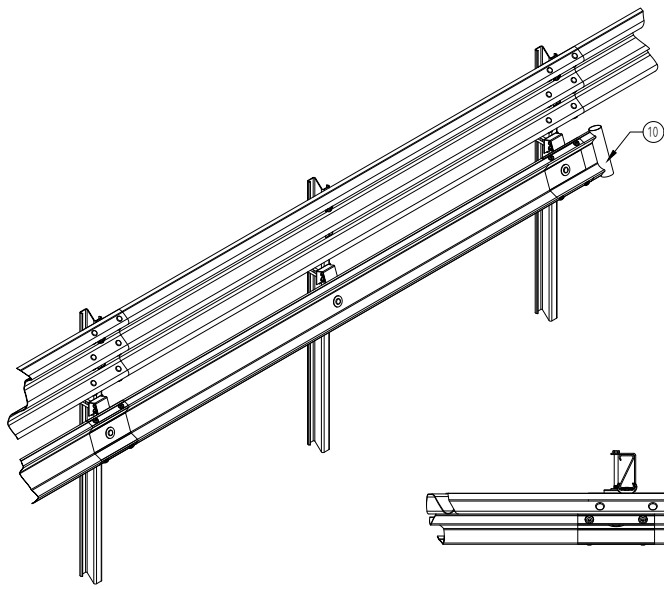
INGAL CIVIL PRODUCTS
57-65 AIRDS ROAD
MINTO, N.S.W
AUSTRALIA 2566
PH. +61 2 9827 3333
FAX +61 2 9827 3300
www.ingal.com.au

DRAWING AND CONTENTS ARE COPYRIGHT TO
INGAL CIVIL PRODUCTS AND CAN ONLY BE USED
WITH PRIOR WRITTEN CONSENT FROM INGAL CIVIL
PRODUCTS

PROJECT	TITLE
	INGAL MPR MOTORCYCLIST PROTECTION TYPE-B GUARDRAIL CONFIGURATION ASSEMBLY DETAILS

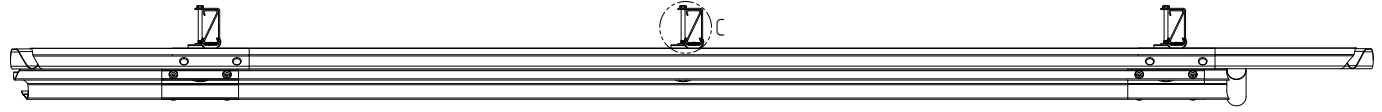
INGAL CIVIL PRODUCTS PART No.	DRAWING No.
10007768	ICP-MPR-004

Rev: 3

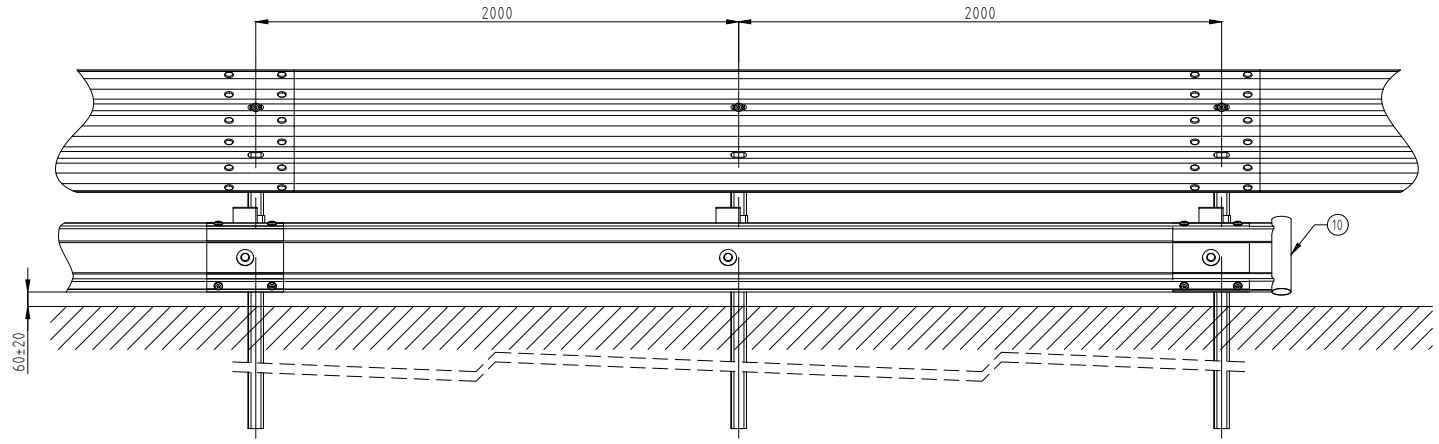
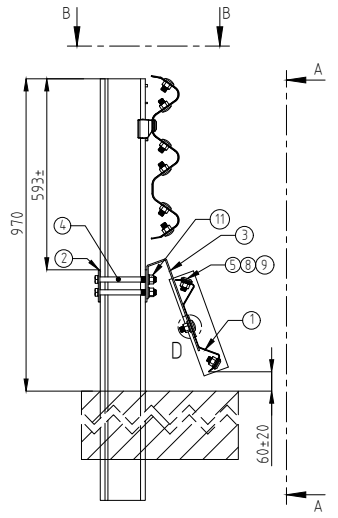


INGAL MPR ON EZY-HC - 4M BOM			
ITEM	QTY	PART No	DESCRIPTION
1	1	10006773	MPR Rail - 4m NLL
2	2	10008582	HC "Z"-Post bracket
3	2	10006772	Rail mounting bracket
4	4	10001282	M16x180 hex bolt & nut
5	4	10001248	Round head bolt M16x32
6	2	10006769	Round head bolt M16x40
7	2	10006771	Slot washer ϕ 70x2
8	6	10006770	Washer - ϕ 35x17x4
9	10	10001254	M16 nut
10	x	10006767	MPR Terminal Piece
11	4	10001242	M16 Round Washer

× ONE TERMINAL PIECE REQUIRED AT BEGINNING AND END OF RUN ONLY.
 ×× EZY-GUARD HC POST SHOWN FOR CLARITY.



SECTION B-B



SECTION A-A

NOTES:
 1. ALL STEELWORK TO BE HOT DIP GALVANISED AFTER FABRICATION TO AS/NZS4680.
 2. TO BE READ IN CONJUNCTION WITH THE INGAL MPR PRODUCT MANUAL.

REV	DATE	DESCRIPTION	DRAWN	CHECKED	APPROVED
4	20-03-2024	COVERSIZE NUT REPLACED BY STANDARD NUT	KZ	MW	KZ
3	26-07-2022	LDS DETAILS ADDED	KZ	LG	LG
2	18-07-2022	BOM UPDATE	KZ	LG	LG
1	17-06-2020	UPDATED QUANTITY FOR ITEM 8	VB	LG	LG

DRAWING NUMBER	REFERENCE DRAWINGS

NAME	DATE
DRAWN WD	09-03-2018
CHECKED HF	09-03-2018
APPROVED LG	09-03-2018
SCALE N.T.S. @ A3	
ISSUE FOR INFORMATION ONLY	

INGAL CIVIL PRODUCTS
 A valmont COMPANY

DRAWING AND CONTENTS ARE COPYRIGHT TO INGAL CIVIL PRODUCTS AND CAN ONLY BE USED WITH PRIOR WRITTEN CONSENT FROM INGAL CIVIL PRODUCTS

57-65 AIRDS ROAD PH: +61 2 9827 3333
 MINTO, N.S.W. 2566 www.ingalcivil.com.au

PROJECT	TITLE
	INGAL MPR - MOTORCYCLIST PROTECTION EZY-GUARD HC/LDS CONFIG GENERAL ARRANGEMENT

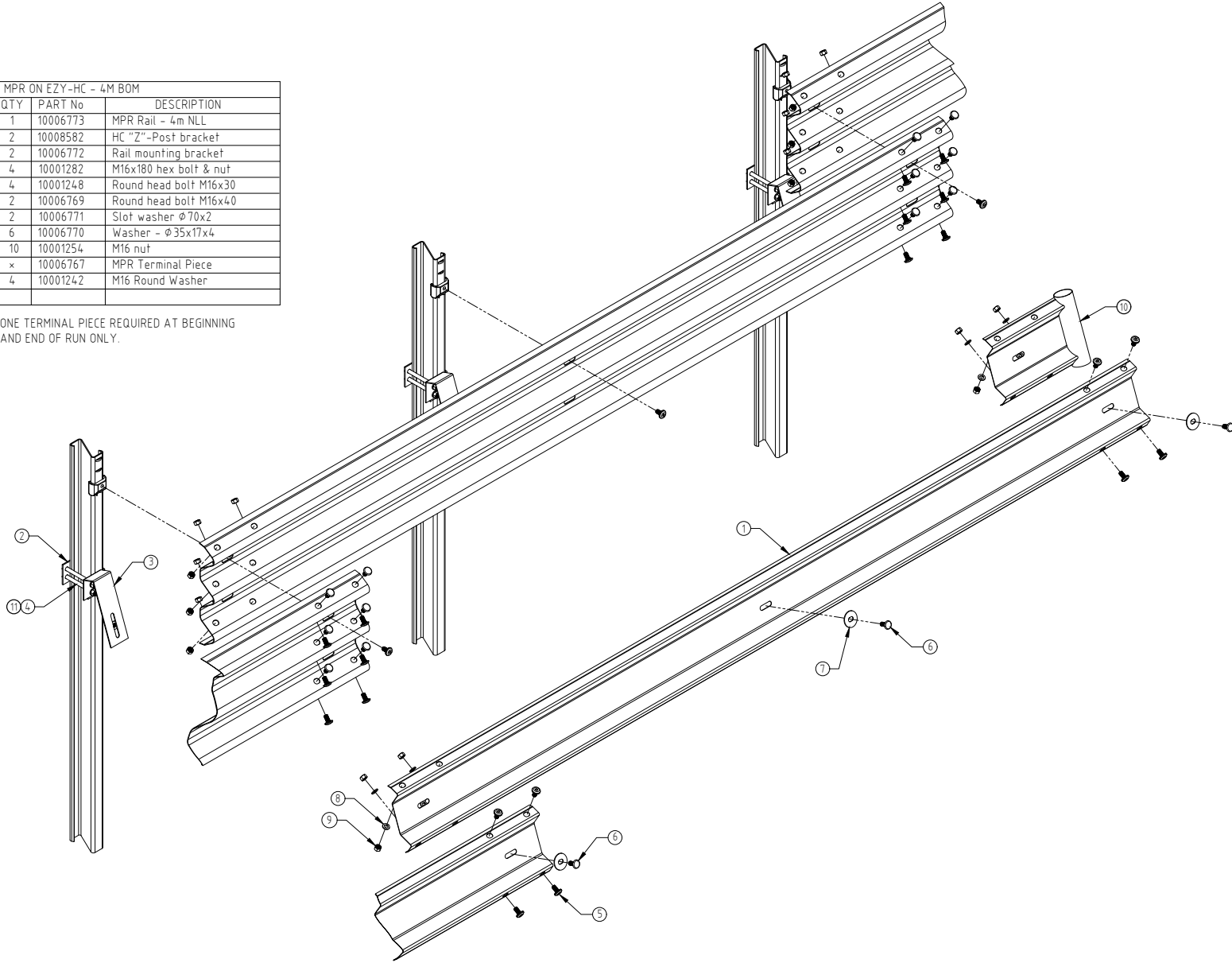
INGAL CIVIL PRODUCTS PART No.	DRAWING No.
10009373	ICP-MPR-014

Rev. 4

ENGINEERING SALES & MARKETING/DRAWINGS/INGAL MPR/ICP-APR014- EZY-GUARD HC/LDS GENERAL ARRANGEMENT DWG

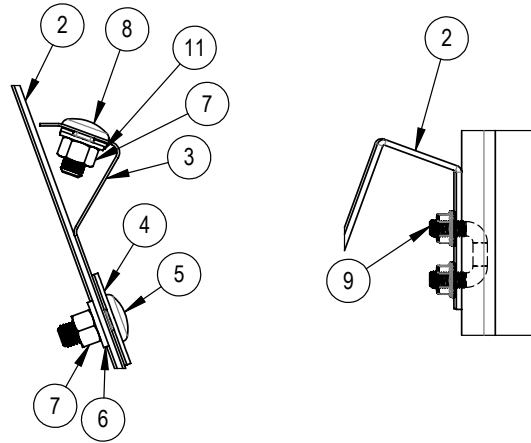
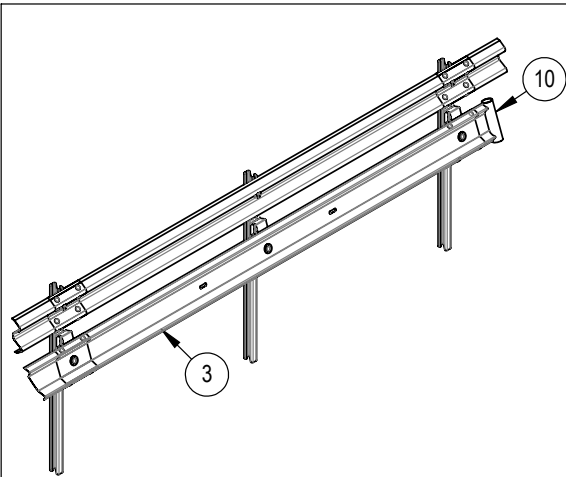
INGAL MPR ON EZY-HC - 4M BOM			
ITEM	QTY	PART No	DESCRIPTION
1	1	10006773	MPR Rail - 4m NLL
2	2	10008582	HC "Z"-Post bracket
3	2	10006772	Rail mounting bracket
4	4	10001282	M16x180 hex bolt & nut
5	4	10001248	Round head bolt M16x30
6	2	10006769	Round head bolt M16x40
7	2	10006771	Slot washer $\phi 70 \times 2$
8	6	10006770	Washer - $\phi 35 \times 17 \times 4$
9	10	10001254	M16 nut
10	x	10006767	MPR Terminal Piece
11	4	10001242	M16 Round Washer

x ONE TERMINAL PIECE REQUIRED AT BEGINNING AND END OF RUN ONLY.



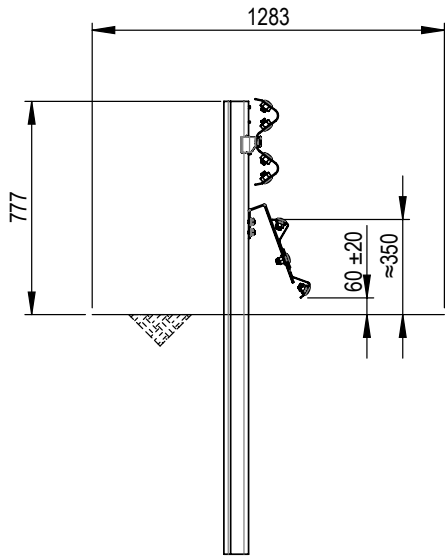
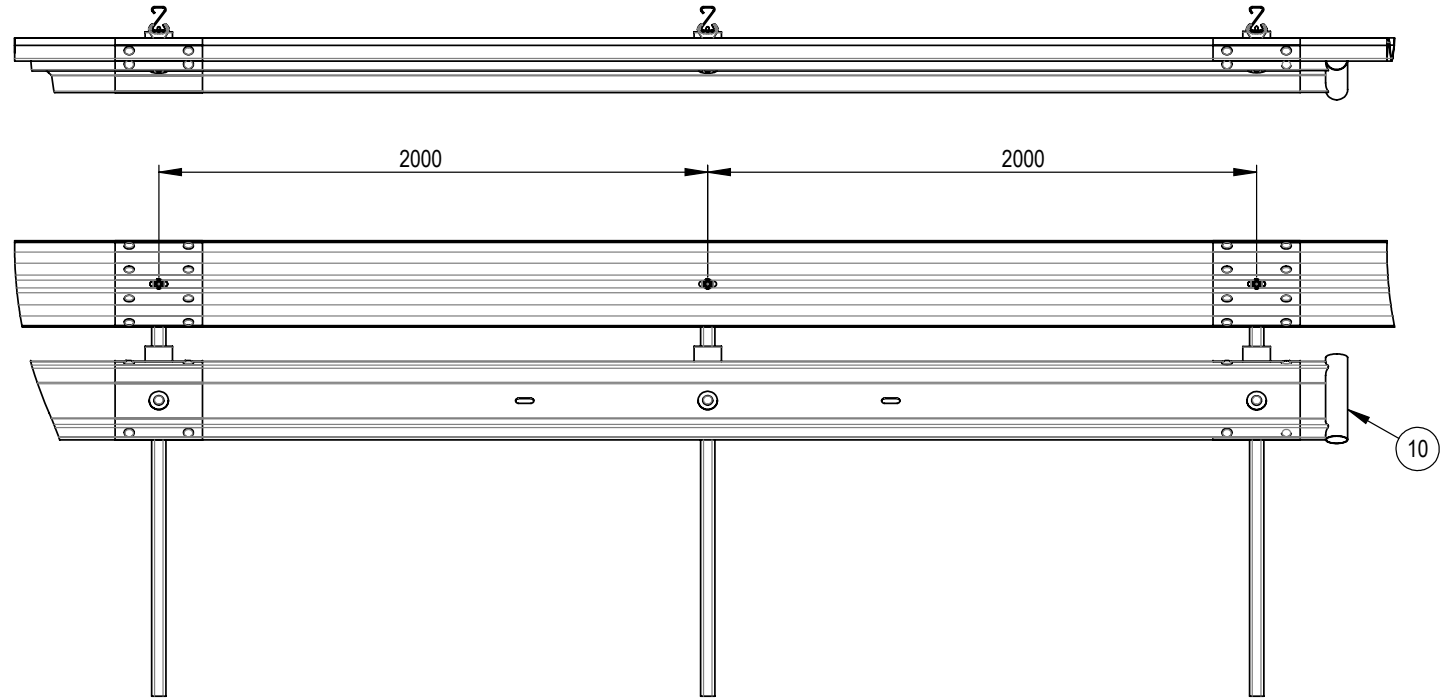
REVISIONS						REFERENCES		DRAWING NUMBER		REFERENCE DRAWINGS		DRAWN		NAME		DATE		PROJECT		INGAL CIVIL PRODUCTS PART No.			
4	20-03-2024	OVERSIZE NUT REPLACED BY STANDARD NUT	KZ	MW	KZ																10009373		
3	28-07-2022	EZY-LDS DETAILS ADDED	KZ	LG	LG																		
2	18-07-2022	BOM UPDATE	KZ	LG	LG																		
1	17-06-2020	UPDATED QUANTITY FOR ITEM 8	VB	LG	LG																		
REV	DATE	DESCRIPTION	DRAWN	CHECKED	APPROVED	DRAWING NUMBER	REFERENCE DRAWINGS	SCALE	N.T.S. @ A3	ISSUE FOR	INFORMATION ONLY	DRAWING No.	ICP-MPR-015	DRAWING AND CONTENTS ARE COPYRIGHT TO INGAL CIVIL PRODUCTS AND CAN ONLY BE USED WITH PRIOR WRITTEN CONSENT FROM INGAL CIVIL PRODUCTS		TITLE		INGAL MPR - MOTORCYCLIST PROTECTION EZY-GUARD HC/LDS CONFIG EXPLODED ASSEMBLY		INGAL CIVIL PRODUCTS PART No. 10009373			
												57-65 AIRDS ROAD MINTO, N.S.W 2566		PH. +61 2 9827 3333 www.ingalcivil.com.au		PROJECT		INGAL CIVIL PRODUCTS PART No. 10009373		DRAWING No. ICP-MPR-015		Rev. 4	

F:\ENGINEERING\SALES & MARKETING\DRAWINGS\INGAL MPR\ICP-MPR-015 - EZY-GUARD HC/LDS EXPLODED ASSEMBLY.DWG



ID	DESCRIPTION	PART NO.
1	EZY-GUARD 4 Z-POST 1650mm - WITH MPR HOLES	10010576
2	MPR MOUNTING BRACKET	10006772
3	MPR RAIL 4m NLL	10006773
4	MPR 70 DIA SLOTTED WASHER	10006771
5	M16 X 40mm SPLICE BOLT	10006769
6	MPR M16 WASHER OD35 ID17 4mm THICK	10006770
7	M16 NUT GRADE 8.8	10001254
8	M16 X 32 SPLICE BOLT	10001248
9	M12 SQUARE U-BOLT & NUT KIT 27 x 30mm	10010370
10	MPR END PIECE	10006767
11	M16 ROUND WASHER 33.5 x 17.5 x 3mm	10001242

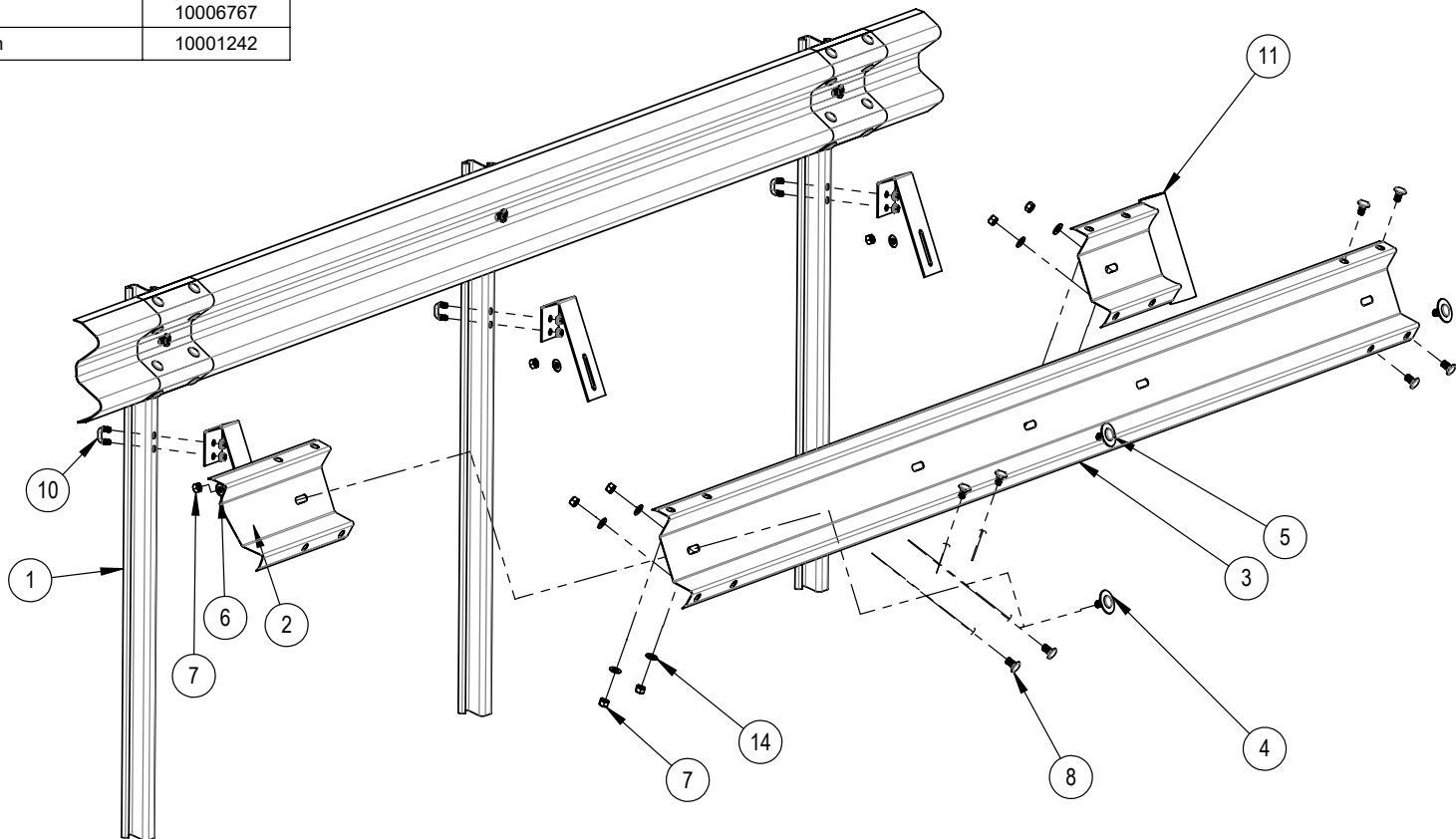
NOTE:
 1. ALL STEEL WORK TO BE HDGALV AFTER FABRICATION TO AS/NZS 4680 AND STRAIGHTENED AFTER GALVANISING IF REQUIRED TO BE READ IN CONJUNCTION WITH THE INGAL MPR PRODUCT MANUAL
 2.



REV.	DATE	DESCRIPTION	DRAWN	CHECKED	APPROVED	DRAWING NUMBER	REFERENCE DRAWINGS	NAME	DATE	PROJECT	INGAL CIVIL PRODUCTS PART No.
2	20/03/2024	OVERSIZE NUT REPLACED BY STANDARD NUT	KZ	MW	KZ			DRAWN	KZ	10-08-2023	
1	18/08/2023	ADDED PART NUMBER FOR THE POST	KZ	LG	LG			CHECKED	LG	10-08-2023	
								APPROVED	LG	10-08-2023	
								SCALE	1:25	SHEET: 1 of 1	
								ISSUE FOR			
										PROJECT MPR EZY-GUARD 4 CONFIGURATION WITH U-BOLT TITLE ICP-MPR-020	
								57-45 ARDS ROAD MINTO, N.S.W 2566 PH. +61 2 9827 3333 www.ingalcivil.com.au		DRAWING No. ICP-MPR-020	
											Rev: 2

FOLDER: F:\ENGINEERING\4. DRAWINGS IN PROGRESS\ MODEL IN PROGRESS\INGAL_MPR\CURRENT DRAWING\MODEL

ID	DESCRIPTION	PART NO.
1	EZY-GUARD 4 Z-POST 1650mm - WITH MPR HOLES	10010576
2	MPR MOUNTING BRACKET	10006772
3	MPR RAIL 4m NLL	10006773
4	MPR 70 DIA SLOTTED WASHER	10006771
5	M16 X 40mm SPLICE BOLT	10006769
6	MPR M16 WASHER OD35 ID17 4mm THICK	10006770
7	M16 NUT GRADE 8.8	10001254
8	M16 X 32 SPLICE BOLT	10001248
9	M16 OVERSIZE NUT	10001239
10	M12 SQUARE U-BOLT & NUT KIT 27 x 30mm	10010370
11	MPR END PIECE	10006767
14	M16 ROUND WASHER 33.5 x 17.5 x 3mm	10001242



REV.	DATE	DESCRIPTION	DRAWN	CHECKED	APPROVED
2	20/03/2024	OVERSIZE NUT REPLACED BY STANDARD NUT	KZ	MW	KZ
1	16/08/2023	ADDED PART NUMBER TO THE POST	KZ	LG	LG

REFERENCES	DRAWING NUMBER	REFERENCE DRAWINGS

NAME	DATE
DRAWN KZ	10-08-2023
CHECKED LG	10-08-2023
APPROVED LG	10-08-2023
SCALE 1:20	SHEET: 1 of 1
ISSUE FOR	

INGAL CIVIL PRODUCTS
a valmont company

DRAWING AND CONTENTS ARE COPYRIGHT TO INGAL CIVIL PRODUCTS AND CAN ONLY BE USED WITH PRIOR WRITTEN CONSENT FROM INGAL CIVIL PRODUCTS

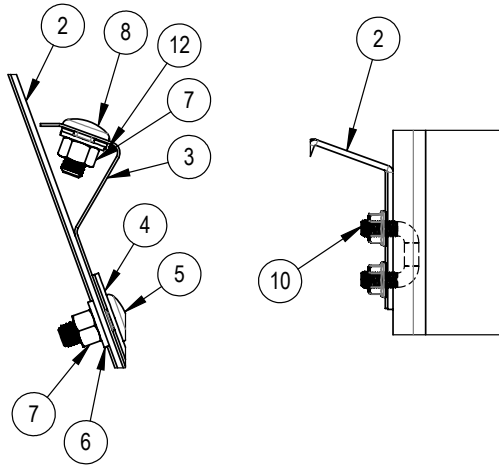
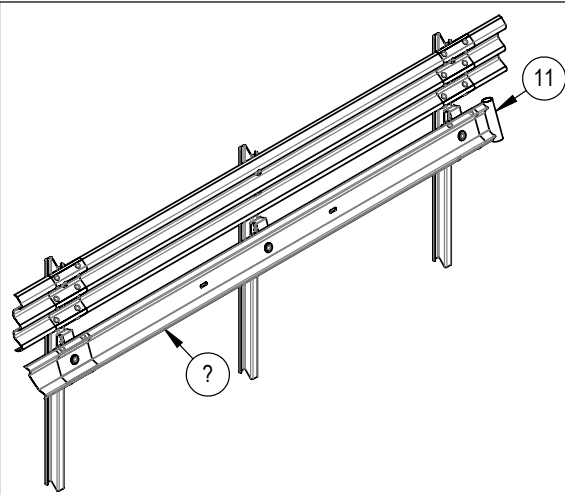
57-65 ARDIS ROAD
 MINTO, N.S.W. 2566
 PH. +61 2 9827 3333
 www.ingalcivil.com.au

PROJECT	TITLE
MPR EZY-GUARD 4 CONFIGURATION WITH U-BOLT - EXPLODED	

INGAL CIVIL PRODUCTS PART NO.	DRAWING No.
ICP-MPR-021	

Rev. 2

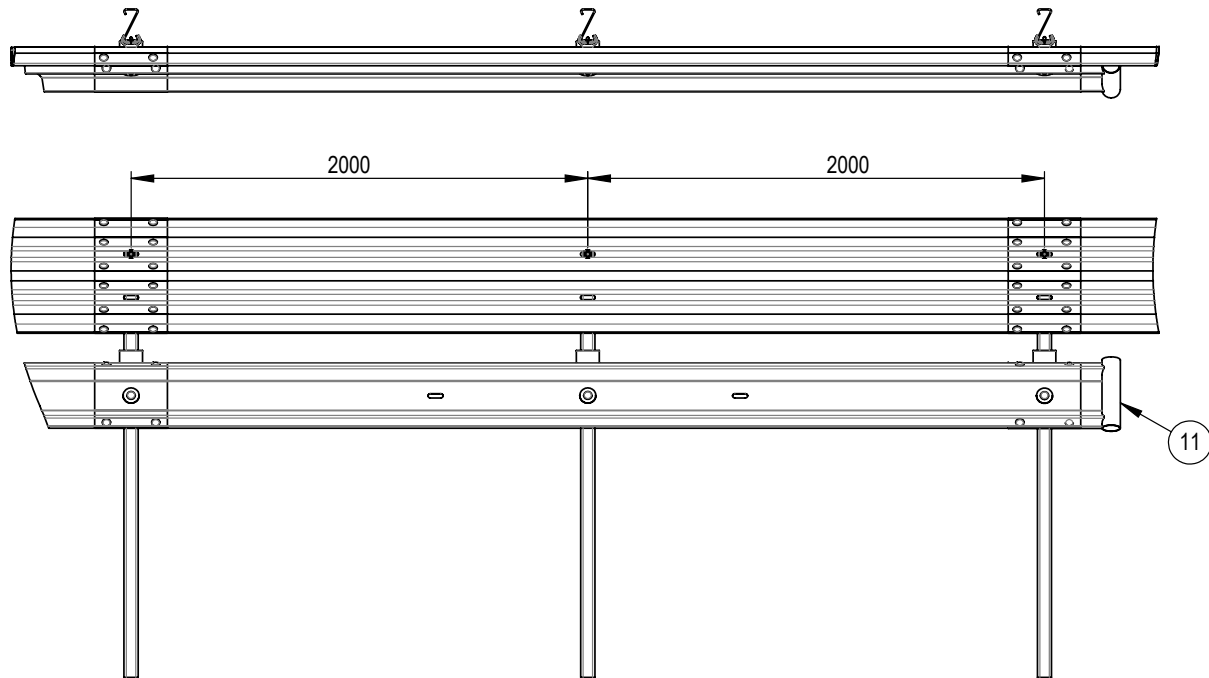
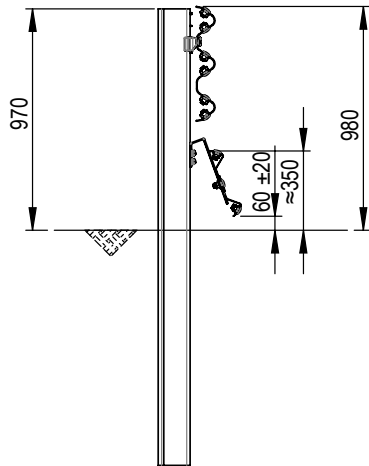
FOLDER: F:\ENGINEERING\DRAWINGS IN PROGRESS\IN PROGRESS\INGAL MPR\CURRENT DRAWING\MODEL



ID	DESCRIPTION	PART NO.
1	EZY-GUARD HEAVY DUTY Z-POST 2000mm WITH MPR HOLES	10010713
2	MPR MOUNTING BRACKET	10006772
3	MPR RAIL 4m NLL	10006773
4	MPR 70 DIA SLOTTED WASHER	10006771
5	M16 X 40mm SPLICE BOLT	10006769
6	MPR M16 WASHER OD35 ID17 4mm THICK	10006770
7	M16 NUT GRADE 8.8	10001254
8	M16 X 32 SPLICE BOLT	10001248
9	M16 OVERSIZE NUT	10001239
10	M12 SQUARE U-BOLT & NUT KIT 27 x 30mm	10010370
11	MPR END PIECE	10006767
12	M16 ROUND WASHER 33.5 x 17.5 x 3mm	10001242


NOTE:

- ALL STEEL WORK TO BE HDGALV AFTER FABRICATION TO AS/NZS 4680 AND STRAIGHTENED AFTER GALVANISING IF REQUIRED TO BE READ IN CONJUNCTION WITH THE INGAL MPR PRODUCT MANUAL
-



REVISIONS			REFERENCES		
REV	DATE	DESCRIPTION	DRAWN	CHECKED	APPROVED
1	20/03/2024	OVERSIZE NUT REPLACED BY STANDARD NUT	KZ	MW	KZ

NAME	DATE
DRAWN KZ	31-01-2024
CHECKED LB	31-01-2024
APPROVED KZ	31-01-2024
SCALE 1:30	SHEET: 1 of 1
ISSUE FOR	

	PROJECT MPR EZY-GUARD HC CONFIGURATION WITH U-BOLT	INGAL CIVIL PRODUCTS PART No. DRAWING No. ICP-MPR-030
---	---	--

FOLDER: F:\ENGINEERING4. DRAWINGS IN PROGRESS\SOLIDWORKS MODEL IN PROGRESS\INGAL MPR\CURRENT DRAWING\MODEL

Ingal MPR Motorcyclist Protection





INGAL
CIVIL PRODUCTS
A valmont  COMPANY

For more information

contact us on the web

www.ingalcivil.com.au

Head Office: Sydney

57-65 Airds Road, Minto, NSW 2566

Ph: +61 2 9827 3333

Fax: +61 2 9827 3300

Local call (within Australia):

1300 446 425

Email: sales@ingalcivil.com.au

Our Locations:

• Adelaide/NT • Brisbane

• Melbourne • Newcastle

• Perth • Sydney • Wagga

• Auckland • Christchurch