

# CMT COMPOSITE SPORTS LIGHTING POLES

STURDY SUPPORT FOR  
ATHLETIC FIELD ILLUMINATION



[cmt-poles.com](http://cmt-poles.com)





# CMT

## Sports Lighting Poles

Available in mounting heights up to 90 feet

Sporting venues require exceptional lighting for ideal visibility by players and fans alike. CMT Marathon poles are ideal for sports fields, ballparks, open public spaces, hike and bike trails, and other outdoor recreational facilities.

These rugged, durable composite poles are a result of decades of development and refinement of fiberglass-construction processes and technology. The product manufacturing process and robust engineering ensures these proven performers provide a long service life.



## Product Performance

Triple UV Protection - 3 Layers for extra-long life in the sun

CMT takes a systematic approach to UV protection, and formulates UV inhibitors into the liquid resin mixture from the beginning of the production process. The outer shell of the pole then is covered with a tightly woven polyester veil that is saturated with a UV-inhibitor. This veil provides a resin-rich surface that controls blooming. In post-production, the finished product receives an exterior coating of our high-performance, UV-protective urethane finish.

Product performance is verified by extensive accelerated testing which demonstrates CMT poles can easily handle what nature dishes out - for decades.

# CMT Marathon Sports Poles

## Built to Last



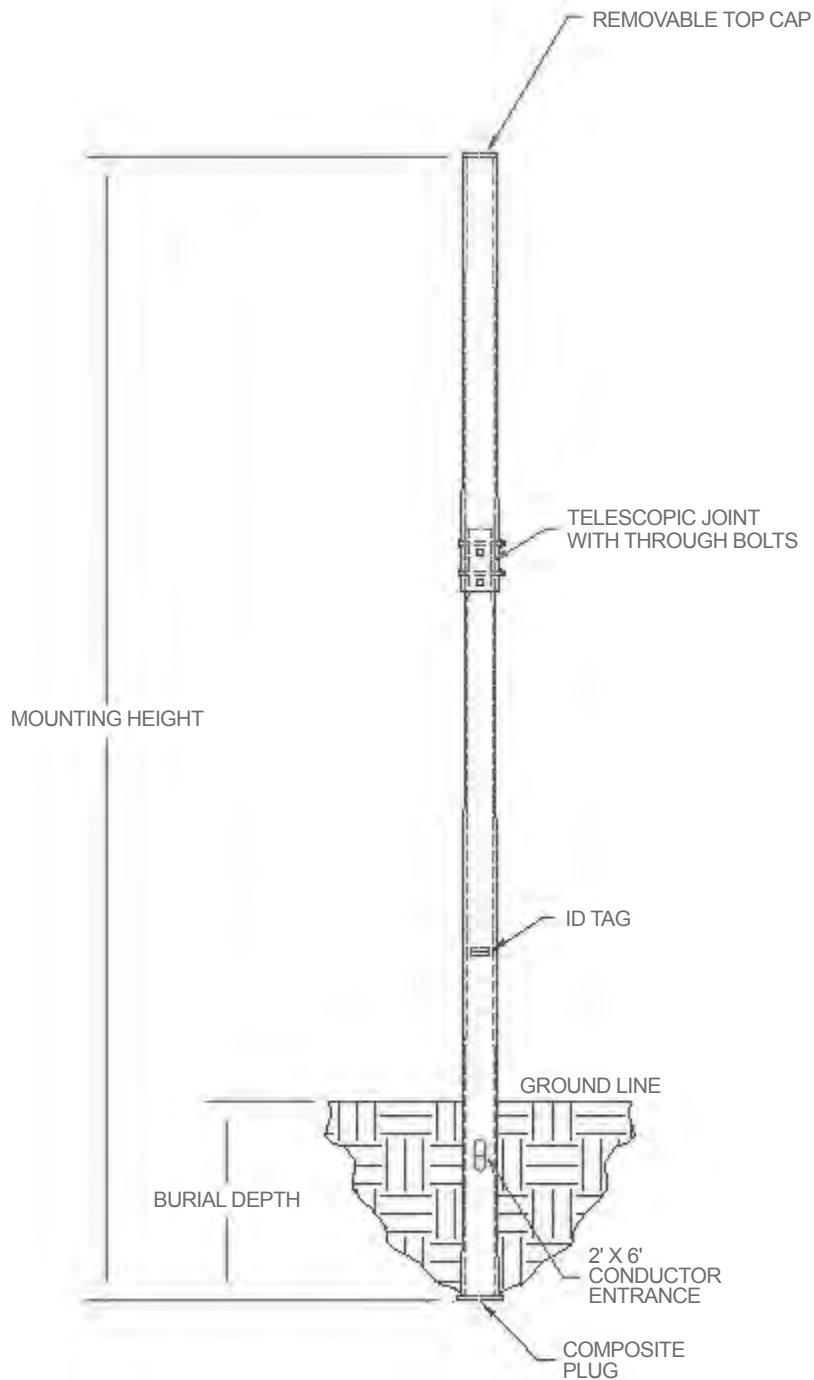
- Easy, fast installation with minimal heavy equipment needed
- Engineered for specific height and strength requirements
- Long lasting pole, with embedded UV inhibitors, polyester veil, and anti-UV coatings
- Low maintenance over the life of the product
- Marathon poles will not rot or corrode, regardless of humidity
- Sturdy and durable, the poles are wrapped in a polyester veil for strength retention and weathering protection
- Unlike wood poles, fiberglass will not twist, rotate, or warp. Insect and woodpecker proof
- Safe, non-conductive fiberglass pole design
- Standard colors are black, bronze, and grey. For custom colors, consult factory
- A hollow core accommodates current and telecom, wireless, security, and fiber access, if specified
- Heavy duty composite crossarms available in 2' to 12' lengths to create lighting arrays

Sports lighting poles are available in standard and custom designs. For special orders, our technical team will carefully consider all specifications and local, project-specific requirements provided with the order, so that we engineer and produce a one-of-a-kind structure to meet your design criteria.



# Sports Lighting Systems

## Solutions for Amateur Athletic Venues



# Sports Lighting Poles Series

by EPA and Wind Zone Requirements

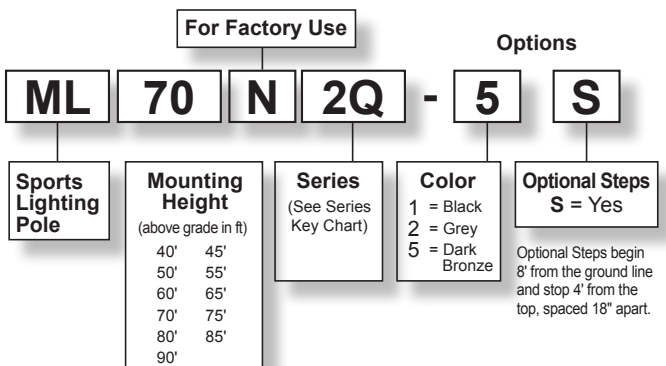
Maximum height is 90' unless otherwise stated. EPA is in square feet.



WITHOUT HANDHOLE					
	90 MPH	100 MPH	110 MPH	120 MPH	130 MPH
20 EPA	2C	3C	4C	5C	6C
30 EPA	2E	3E	4E	5E	6E (85' max.)
40 EPA	2G	3G	4G	5G (85' max.)	6G (80' max.)
50 EPA	2J	3J	4J	5J (80' max.)	6J (75' max.)
60 EPA	2L	3L	4L (80' max.)	5L (75' max.)	6L (75' max.)
70 EPA	2N	3N (85' max.)	4N (80' max.)	5N (75' max.)	6N (75' max.)
80 EPA	2Q	3Q (80' max.)	4Q (75' max.)	5Q (70' max.)	6Q (65' max.)
90 EPA	2R (85' max.)	3R (80' max.)	4R (70' max.)	5R (65' max.)	6R (60' max.)
100 EPA	2T (80' max.)	3T (75' max.)	4T (70' max.)	5T (60' max.)	6T (55' max.)
110 EPA	2V (80' max.)	3V (75' max.)	4V (65' max.)	5V (60' max.)	6V (50' max.)
120 EPA	2X (75' max.)	3X (70' max.)	4X (60' max.)	5X (55' max.)	6X (50' max.)



## Sports Lighting Poles Order Logic



## KEY TO SERIES NOMENCLATURE

WIND ZONES	EPA RATINGS
2 = 90 MPH	C = 20 EPA
3 = 100 MPH	E = 30 EPA
4 = 110 MPH	G = 40 EPA
5 = 120 MPH	J = 50 EPA
6 = 130 MPH	L = 60 EPA
9 = OTHER	N = 70 EPA
(Contact Factory for Wind Zones Above 130 MPH)	Q = 80 EPA
	R = 90 EPA
	T = 100 EPA
	V = 110 EPA
	X = 120 EPA

# Sports Lighting Cross Arm Order Logic

## Sports Lighting Cross Arms

Sports Lighting  
Cross Arm

**OPXA**

**8I**

**5**

Cross Arm E.P.A.	
Length	EPA
2'	1.2
4'	2.4
6'	3.6
8'	4.8
10'	6.0
12'	7.2

Series	Length	Fixtures*
2I	2'	1
4I	4'	2
6I	6'	3
8I	8'	4
10I	10'	5
12I	12'	6

\* with 22" reflector

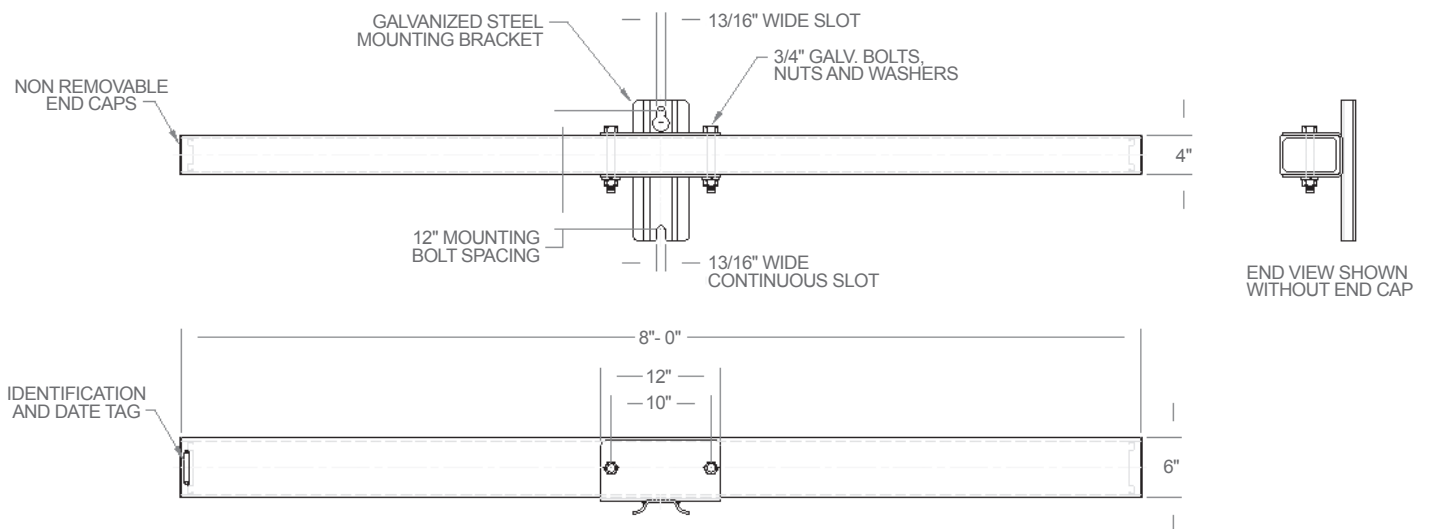
Luminaire arrays are field installed.

**Color**

1 = Black

2 = Grey

5 = Dark Bronze





CMT offers a broad range of standard, decorative, and custom-engineered light poles and lamp posts. These high-quality composite structures are ideal for use in illuminating the space adjacent to sports venues, such as concession areas, parking lots, and roadways.



145 Wood Street  
Estill, SC 29918 USA  
800.416.4276  
[cmt-poles.com](http://cmt-poles.com)

**valmont**   
COMPOSITE STRUCTURES