



# ENGINEERED COMPOSITE LIGHT POLES

## DISCOVER THE CMT DIFFERENCE

A leading manufacturer of composite poles for outdoor lighting, CMT is unique in utilizing a time-proven, centrifugal-cast production process. Remarkable design engineering provides high structural integrity and an attractive finish, making CMT poles ideal for most any installation.



## ROUND TAPERED MARATHON LIGHTING STANDARDS

The Marathon product family of centrifugally cast light poles delivers an exceptional level of performance and economy to street and area lighting applications. These rugged, durable composite-material poles are a result of decades of development and refinement of CMT processes and technology.

Virtually maintenance free, CMT round tapered light poles can be configured for direct-burial or anchor-base installations. Customers can choose from these standard configurations:

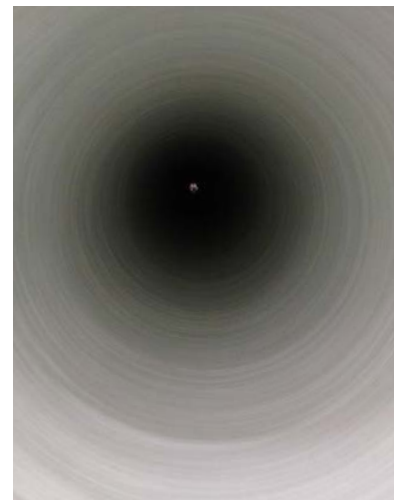
- Post Top
- Side Mount
- Mast Arm (Standard arm lengths of 4, 6, 8, 10, or 12-feet)



## Marathon Composites - Enduring Quality for the Road Ahead

CMT employs a centrifugal-cast process to produce our round tapered composite poles. Each pole starts with a layer of polyester veil to provide a smooth exterior finish and protect against fiber blooming. Then a knitted fiberglass fabric is cut to size and laid over the veil. We then select the layers of fiberglass and other content according to the strength and other factors required in the finished pole. Our production team then inserts the pattern into one of our spin-casting machines.

As the machine spins, we introduce our specially formulated resin. From the centrifugal force, the resin immediately moves through the fiberglass to the outside of the spinning mold. After some curing time, the finished pole is removed from the machine. The pole then moves through the operation to receive custom drilling, handholes, tenons, and paint, all to customers' specifications. The final step is to wrap the poles for shipment to the customer.





# SQUARE MARATHON COMPOSITE LIGHT POLES

CMT straight square composite poles are engineered with a high-strength-to-weight ratio. Ideal for direct-burial or anchor-base installations, CMT square composite lighting standards are available in 4x4-inch configurations for mounting heights up to 25-feet, and 5x5-inch configurations for mounting heights up to 30-feet.

Durable, yet lightweight, CMT square poles can be carried and installed without lifting equipment.



## Marathon Poles - Built to Last

- Engineered for specific height and strength applications
- Sturdy, durable, and dent-resistant fiberglass composite structures
- Rust-proof and corrosion-resistant for low lifetime maintenance
- Lightweight and easier to install than concrete, steel, and wood poles
- A hollow core accommodates current and telecom, wireless, security, and fiber access, if specified
- Long lasting, with embedded UV inhibitors, polyester veil, and anti-UV coatings
- Less electrically conductive than steel, aluminum or wood
- Available in a variety of colors and finishes for enduring beauty
- High-wind-speed light poles with ratings up to 180 mph available

## Color and Finish Options

The resins that form these light poles incorporate UV inhibitors for long-lasting eye appeal. In addition, the finished poles are coated with a pigmented, high-performance polyurethane containing UV inhibitors to help prevent color fading over time.

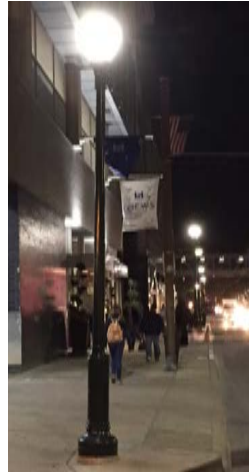
Standard and architectural colors are available – including the 3 most popular CMT colors: dark bronze, black and white. In addition, most any RAL color can be matched. Gloss or semi-gloss finishes are standard; aggregate and custom finishes are available. Contact CMT to learn more.



## LEGACY ORNAMENTAL COMPOSITE LIGHT POLES

Utility professionals and lighting designers are increasingly interested in leveraging CMT's technical talent and engineering expertise to create distinctive architectural streetscapes with the Legacy family of ornamental light poles and lamp posts.

The Legacy product line provides CMT customers with a comprehensive selection of decorative lamp posts, light poles and outdoor decorative lighting accessories which can transform ordinary street and area illumination into an extraordinary creative environment.



### Great Classic Designs for Timeless Elegance

Legacy ornamental light poles are crafted in many classic styles with rust-proof, corrosion-resistant composite material, which provides enduring beauty. These decorative lighting structures offer low-cost advantages compared to other materials and are virtually maintenance free, which saves time and money over the product lifetime.

CMT Legacy poles add a level of sophistication to any lighting project. Round tapered and round straight configurations are available and many poles are also available with fluted designs for a distinctive appearance. Many models are available in heights up to 30-feet. See website for details.

- Round Tapered Smooth Poles
- Round Tapered Fluted Poles
- Octagonal
- Round Straight Poles (4-in, 5-in, 6-in diameter)
- Round Straight Fluted Poles (4-in, 5-in diameter)
- 10 Flute

### Customized Decorative Lamp Posts and Light Poles



The Legacy product line allows for innovative customization opportunities. Custom-designed outdoor decorative lighting is installed to create a distinctive sense of community in suburban areas and small towns, to facilitate urban redevelopment in metropolitan areas, and to provide an upscale aesthetic on important or historic roads and bridges. CMT engineers can create a custom Legacy ornamental pole for your unique design requirements.

# INTEGRATED POLE & DECORATIVE SHROUDS



A key differentiator of CMT Legacy products is that many of our poles and shrouds are crafted as one-piece structures, resulting in an integrated pole and shroud combination. In addition to providing long-lasting good looks and exemplary structural integrity, the pole is easy to install using either a direct-burial approach or an anchor-base foundation. The singular Legacy design eliminates the risk of base cover theft. Also, public safety is enhanced since the entire unit is a continuous, non-conductive, fiberglass composite structure. Visit the CMT website or contact the factory to learn more.

## Stand-Alone Decorative Shrouds

Many CMT decorative shrouds are also available as individual units and are crafted to be virtually maintenance free while providing long-lasting protection to light pole bases. You may choose a slip-over design, which slides over the pole during installation. Or, you may prefer a convenient clamshell design, which installs easily on new or existing pole installations.

All CMT decorative shrouds are cast from either fiberglass composite materials or a special formulation of elastomeric urethane. These highly durable composite materials are engineered to maintain an attractive appearance while withstanding the punishing conditions found along busy roadways and high-traffic intersections.

### Benefits:

- **Durability** – provides long-lasting light pole protection
- **Impact resistant** to maintain an attractive appearance
- **Non-corrosive, rust-proof design** – stands up to weather, moisture, sun, snow and de-icing agents
- **High color & gloss retention** for outstanding finish presentation over time
- **Versatility** – for use on straight or round tapered poles with smooth or fluted designs
- **Non-conductive material properties** enhance safety
- **Affordable and easy to maintain**
- **Made in the USA** – compliant with Buy America DOT standards
- **Anti-theft assurance** – unlike metal, this shroud material is not attractive to thieves

The all-weather shroud material is impregnated with a black tint as standard. Custom exterior finish colors and prime coat may be specified at additional cost. Contact CMT for details regarding material options, non-standard shrouds, custom decorative shrouds or traffic-signal pole shrouds.







## BREAKAWAY POLES

For roadside installations vulnerable to vehicular impacts, CMT offers direct burial breakaway street light poles providing substantial savings over traditional anchor-base designs. Designed to reduce injuries in the event of impact, CMT breakaway poles are specially designed so they will break off and fly over a vehicle that strikes them, minimizing danger to the vehicle's occupants. These poles are approved by the Federal Highway Administration (FHWA) as satisfying the American Association of State Highway and Transportation Officials' (AASHTO) breakaway requirements within the range of conditions tested.



## HINGED POLES

CMT hinged-base poles offer an excellent solution for hard-to-access installation areas and are popular with customers looking to reduce routine lighting maintenance expenses. Crews do not need bucket trucks, lifts or even a ladder to re-lamp these poles. CMT offers round tapered hinged poles in up to 24-foot mounting heights and also 4x4-inch square poles in up to 18-foot mounting heights. CMT hinge poles are engineered products that can be designed for both direct burial and anchor base installations.



## SPORTS POLES

CMT sports lighting structures are ideal for sports fields, parks and outdoor recreational facilities. The composite product manufacturing process and robust engineering ensures these proven performers will provide a long service life. Available in mounting heights up to 90 feet, CMT sports poles have an extra-durable veil finish with UV inhibitors formulated into the resin and into the coatings for extra-long life in the sun.

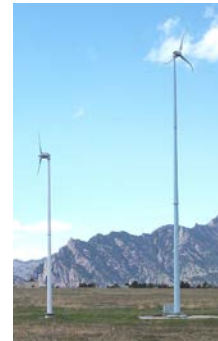


# CUSTOM MARATHON POLES

With decades of experience in engineering and producing centrifugally cast composite structures, CMT Marathon poles are a natural choice for providing custom and specialty products to satisfy your specific needs. Whenever and wherever a tough, durable and cost-effective pole is needed, Marathon composite structures are likely to provide a lightweight, durable solution.

In addition to outdoor lighting applications, Marathon poles can be designed for any number of outdoor applications in either direct-burial or pedestal-mount installations:

- Utility power distribution poles
- Solar-panel structures combined with lighting and/or school-zone signs
- Wind-energy poles
- Security-camera structures
- Telecommunication poles
- Wireless communication structures
- Electric vehicle charging station support structures
- Bollard structures for safety perimeters
- Wayfinding sign structures in urban and historic settings
- Hike and bike trail sign structures and guideposts



## LIGHT POLE ACCESSORIES FROM CMT

CMT offers an excellent selection of light pole product accessories to add functional elegance to outdoor lighting and roadway installations.

- |                                 |                                   |
|---------------------------------|-----------------------------------|
| ● Mast arms - tapered and truss | ● Bullhorns                       |
| ● Composite twin arms           | ● Anchor-base bolts               |
| ● Decorative arms               | ● Handhole cover chain            |
| ● Banner arms and flag holders  | ● Weatherproof GFCI receptacle    |
| ● Finials                       | ● Terminal block with fuse holder |
| ● Tenons and Pole Caps          | ● Hinged facade base              |
| ● Lighting brackets             | ● Detachable burial foot          |



## UNIQUELY CRAFTED FOR OUTSTANDING PERFORMANCE

CMT is a leading manufacturer of engineered spun-cast composite poles and structures. A time-proven performer, CMT has delivered more than 1,000,000 poles to over 5,000 customers throughout the United States and internationally.



- **Centrifugal Casting** - CMT poles are different by design. Get precision-crafted composite poles of enduring quality with our centrifugal casting production process. Unlike others, CMT orients fiberglass strands longitudinally and circumferentially – providing a superb structural design.
- **Ease of Installation** - Our lightweight composite poles save time, manpower, equipment, and money during installation. CMT poles can be carried without equipment, making them easy to install most anywhere. Composite poles are particularly valuable for existing sites where the grounds must not be disturbed, and for out-of-the-way and hard-to-reach sites, such as parks and trails.
- **US Designed and Built** - CMT poles are engineered and crafted in the United States and meet Buy America provisions for transportation infrastructure projects.
- **Designed to Last** - CMT composites will never rust and perform exceptionally well in humidity and salt-air environments along coastlines, in high-traffic environments found in busy metropolitan areas, and in dry, harsh environments in the desert southwest. Truly, CMT poles are ideal for most any environment.
- **Safety** - CMT poles are non-conductive and meet ANSI C136.20 standards, plus ASTM design standards -- ideal for installation in heavily populated venues such as ball-parks and playgrounds, as well as residential, business and shopping areas.
- **Superb Selection** - Choose from our Marathon™ round tapered or square poles, Legacy™ ornamental light poles and lamp posts, or CMT's custom engineered composite structures for your next outdoor lighting project.

145 Wood Street  
Estill, SC 29918 USA

Phone: +1 800.416.4276  
Fax: +1 803.625.4722

[cmt-poles.com](http://cmt-poles.com)

**valmont**   
STRUCTURES