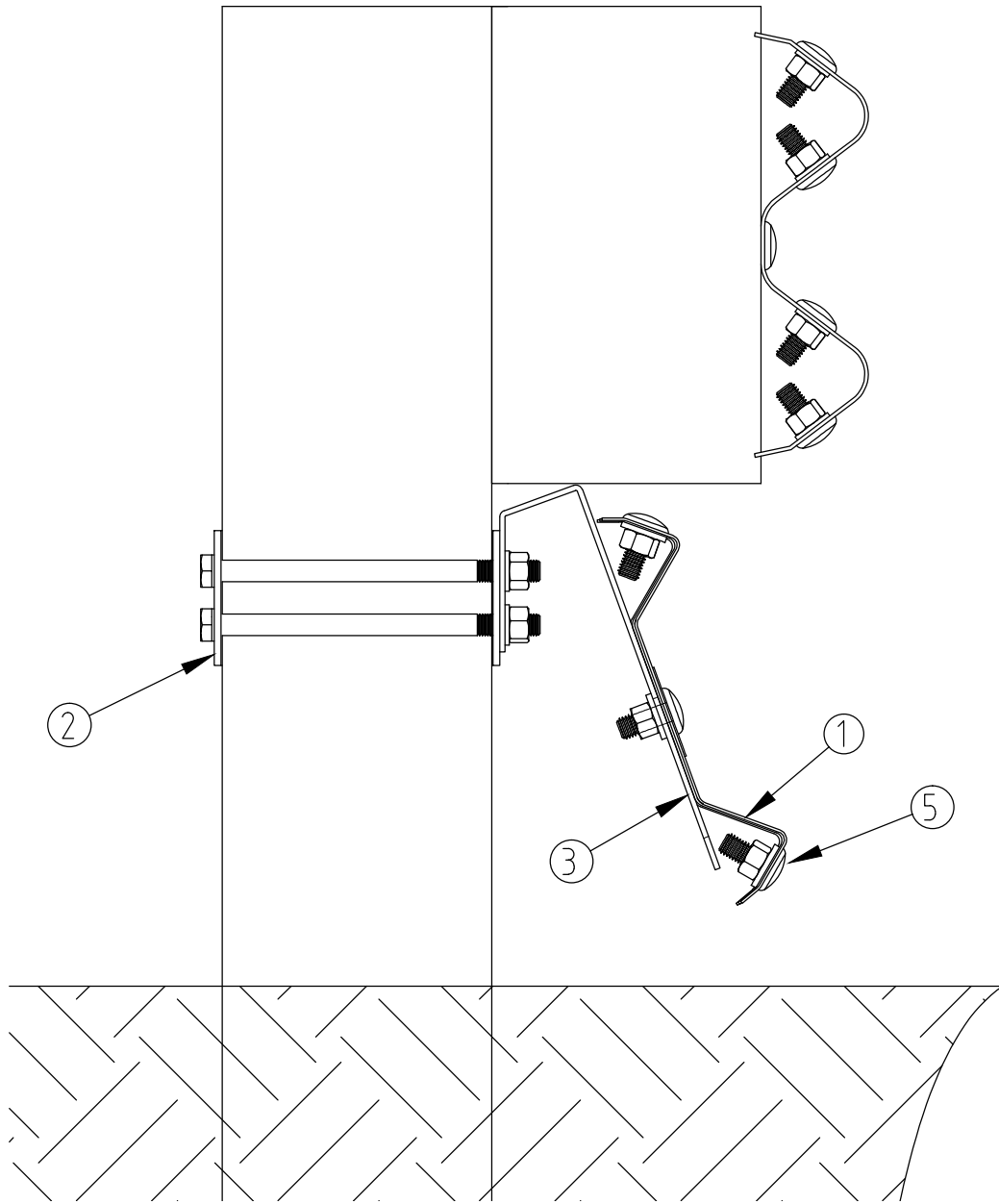
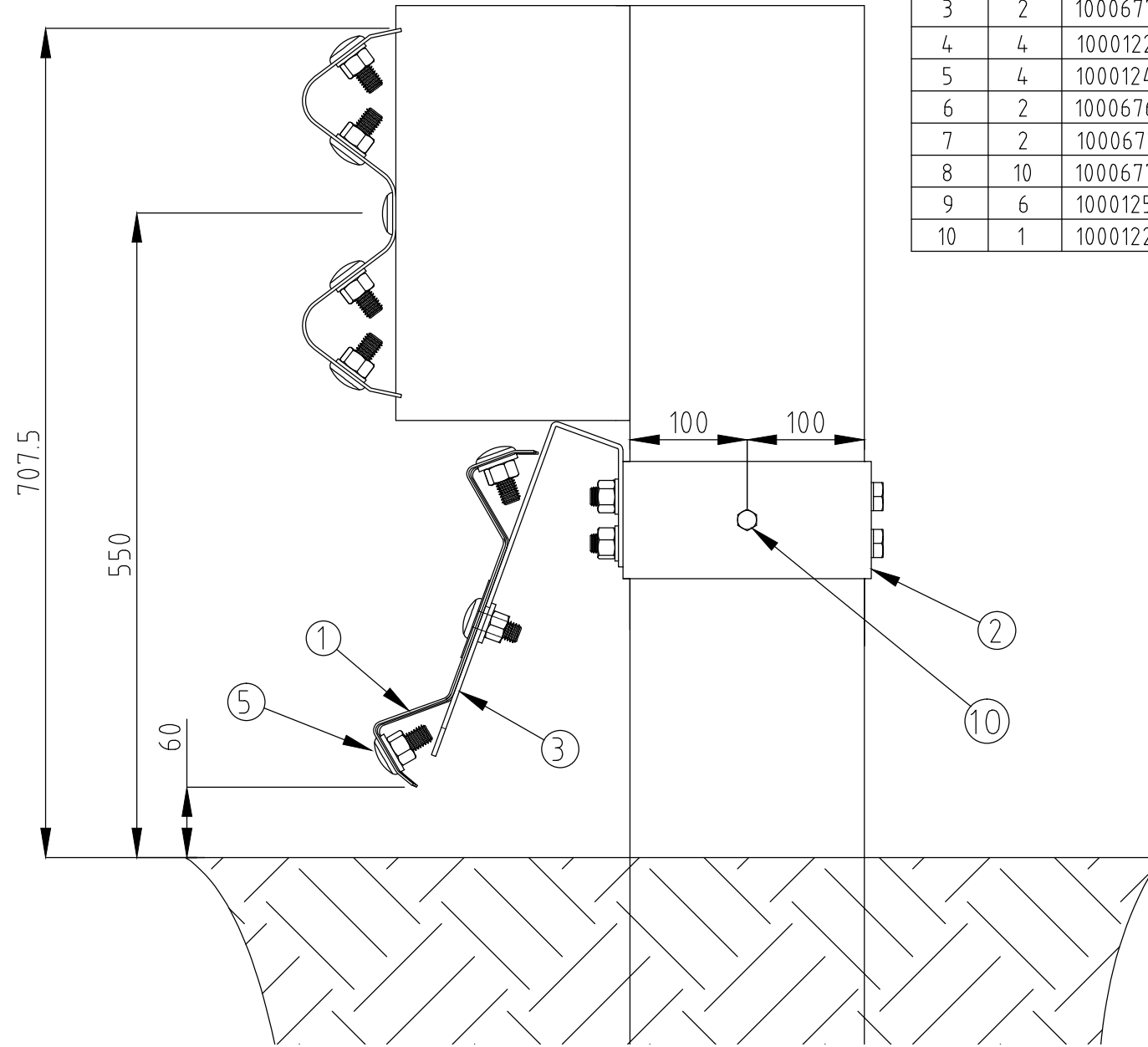


G4 CONFIG - MPR BILL OF MATERIALS			
ITEM	QTY	PART No	DESCRIPTION
1	1	10006773	Motorcyclist protection beam
2	2		MPS Timber Post bracket
3	2	10006772	Rail mounting bracket
4	4	10001224	M16x240 hex bolt
5	4	10001248	Round head bolt M16x30
6	2	10006769	Round head bolt M16x40
7	2	10006771	Slot washer ϕ 70x2
8	10	10006770	Washer ϕ 35x17x4
9	6	10001254	M16 nut
10	1	10001220	M10x100 hex head coach bolt



APPROACH-SIDE
ELEVATION VIEW



DEPARTURE-SIDE
ELEVATION VIEW

J:\4. DRAWINGS IN PROGRESS\WIP - MELNZTA MPR\ICP-MPR-00X - NZ TIMBER BLOCK CONFIG.DWG

REV	DATE	DESCRIPTION	DRAWN	CHECKED	APPROVED	DRAWING NUMBER	REFERENCE DRAWINGS	NAME	DATE	PROJECT	TITLE	INGAL CIVIL PRODUCTS PART No.
0								MC	07-10-2015	INGAL CIVIL PRODUCTS 57-65 AIRDS ROAD MINTO, N.S.W AUSTRALIA 2566 PH. +61 2 9827 3333 FAX +61 2 9827 3300 www.ingalcivil.com.au	INGAL MPR MOTORCYCLIST PROTECTION NZ TIMBER POST GUARDRAIL CONFIGURATION ASSEMBLY DETAILS	ICP-MPR-008
										DRAWING AND CONTENTS ARE COPYRIGHT TO INGAL CIVIL PRODUCTS AND CAN ONLY BE USED WITH PRIOR WRITTEN CONSENT FROM INGAL CIVIL PRODUCTS	DRAWING No.	Rev: 0