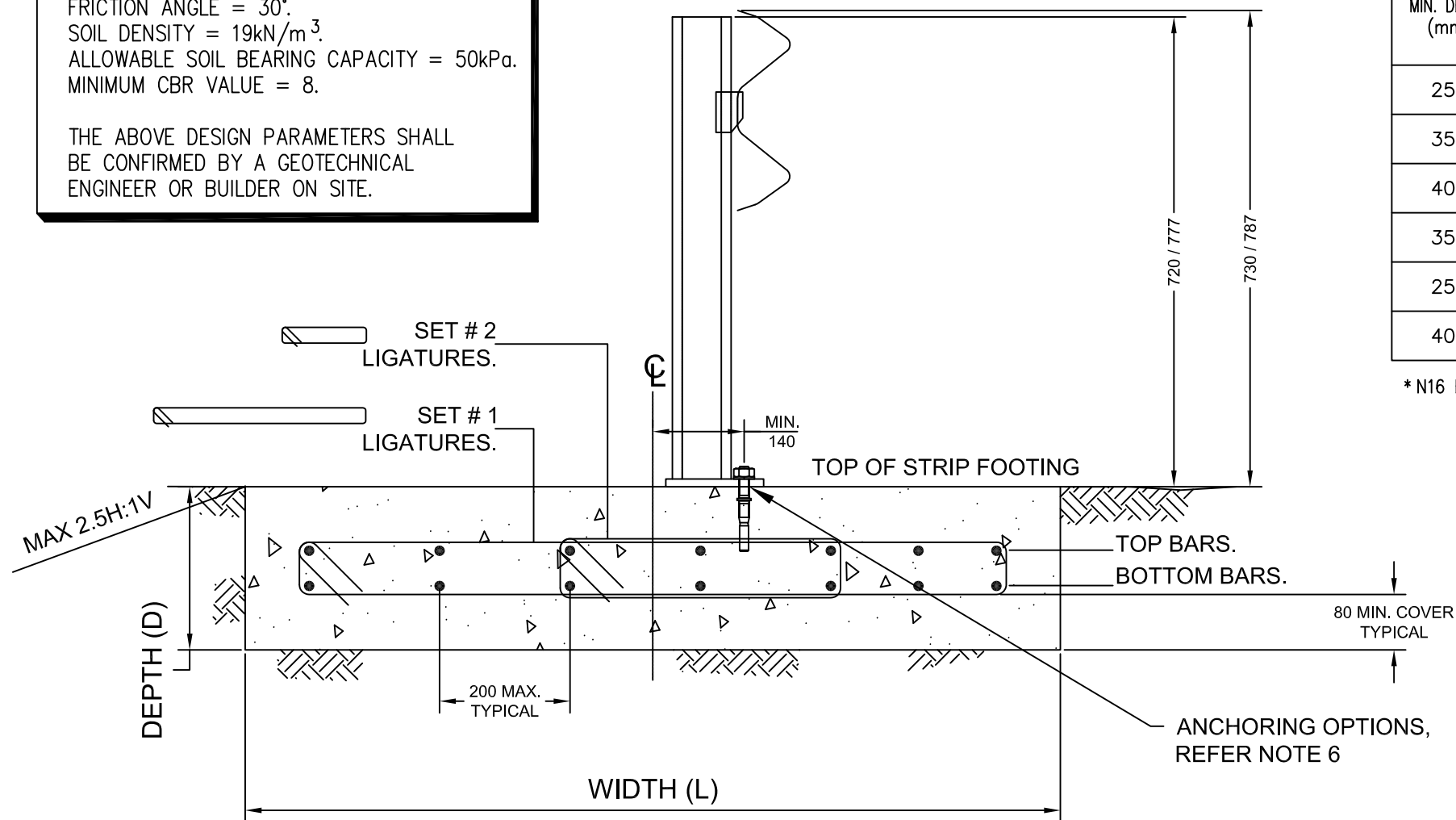


**DESIGN PARAMETERS/ASSUMPTIONS**

**FOUNDATION SOIL**

FRICTION ANGLE = 30°.  
 SOIL DENSITY = 19kN/m<sup>3</sup>.  
 ALLOWABLE SOIL BEARING CAPACITY = 50kPa.  
 MINIMUM CBR VALUE = 8.

THE ABOVE DESIGN PARAMETERS SHALL BE CONFIRMED BY A GEOTECHNICAL ENGINEER OR BUILDER ON SITE.



**STRIP FOOTING SPECIFICATIONS—REINFORCING BAR OPTION**

D MIN. DEPTH (mm)	L MIN. WIDTH (mm)	B MIN. LENGTH OF FOOTING (mm)	REINFORCEMENT			
			(TOP BARS)	(BOTTOM BARS)	LIGATURES, 80 COVER	
					SET # 1	SET # 2
250	950	19000	5-N16	5-N16	R10-300 CTS.	R10-300 CTS.
350	800	19000	5-N16	5-N16	R10-300 CTS.	-
400	750	19000	4-N16	4-N16	R10-300 CTS.	-
350	1100	11000	6-N16	6-N16	R10-300 CTS.	R10-300 CTS.
250	1250	11000	7-N16	7-N16	R10-300 CTS.	R10-300 CTS.
400	750	19000	2-N20 & 1-N16*	2-N20 & 1-N16*	R10-300 CTS.	-

\*N16 BAR TO BE LOCATED TOWARDS CENTER OF BEAM WITH N20 BARS TOWARDS OUTER EDGES

**NOTES:**

- ALL DIMENSIONS IN MILLIMETRES.
- MINIMUM STRENGTH OF CONCRETE FOOTING - 30MPa.
- MINIMUM CLEAR COVER TO BE 80mm
- FOR SITES WITH UNCONVENTIONAL GEOMETRIES, HIGH WATER TABLES, ALTERNATIVE SOIL TYPES OR UNUSUAL SITE SPECIFIC VARIABLE, ALTERNATIVE FOOTING DESIGNS WILL BE REQUIRED. PLEASE SEEK ADVICE FROM A QUALIFIED GEOTECHNICAL ENGINEER OR YOUR LOCAL INGAL SALES REPRESENTATIVE.
- FOR MIXED SOIL TYPES, A CONSERVATIVE APPROACH OF ASSUMING THE WEAKER SOIL PROPERTIES FOR THE FULL DEPTH IS RECOMMENDED.

**NOTES CONTINUED:**

- ANCHORING OPTIONS:
  - OPTION 1: REID ELEPHANT FOOT FERRULES M20 x 95 (FE20095GH), WITH M20 x 40 G8.8 SET SCREW AND WASHER. WHERE POSSIBLE, REO CROSSBAR SHOULD BE THREADED THROUGH CROSS HOLE IN FERRULE TO IMPROVE ANCHOR ALIGNMENT. REID THREADED INSERT M20 x 120 (TIM20X120) ALSO SUITABLE.
  - OPTION 2: RAMSET CHEMSET ANCHOR STUDS WITH EPCON C8 CHEMICAL ANCHOR EPOXY.M20 x 215 m Grade 8.8 WITH MIN EMBEDMENT 150mm. IF USED IN RETROFIT LOCATIONS, THE DESIGNER SHALL CONFIRM SUITABILITY OF FOUNDATION BEFORE INSTALLATION.
  - OPTION 3: NZTA CAST IN BRACKET, REFER DRAWING EZY-SM-125.

REV	DATE	DESCRIPTION	DRAWN	CHECKED	APPROVED
12	09-07-2020	ALTERNATIVE REO DETAIL ADDED	LG	VB	LG
11	30-01-2020	30MPa CONCRETE UPDATED	LG	BM	LG
10	10-05-2019	MINIMUM CLEAR COVER DIMENSION ADDED	VB	LG	LG
9	14-11-2018	STRIP FOOTING UPDATED TO REINFORCING BAR OPTION	VB	LG	LG
8	14-09-2018	POST & RAIL HEIGHTS MODIFIED; MAX SLOPE SPECS ADDED	VB	LG	LG
7	08-08-2018	STRIP FOOTING SPECIFICATIONS UPDATED	VB	LG	LG
6	04-04-2018	NOTE UPDATED RE NZ ANCHORING OPTIONS	WD	LG	LG
5	05-03-2018	NOTE UPDATE RE CROSSBAR	LG	SE	LG

DRAWING NUMBER	REFERENCE DRAWINGS	NAME	DATE
		DRAWN	DK 06-11-2014
		CHECKED	LG 07-11-2014
		APPROVED	LG 07-11-2014
		SCALE	N.T.S. @ A3
		ISSUE FOR	INFORMATION ONLY

**INGAL CIVIL PRODUCTS**  
 57-65 AIRDS ROAD  
 MINTO, N.S.W.  
 AUSTRALIA 2566  
 PH. +61 2 9827 3333  
 FAX +61 2 9827 3300  
 www.ingalcivil.com.au

DRAWING AND CONTENTS ARE COPYRIGHT TO INGAL CIVIL PRODUCTS AND CAN ONLY BE USED WITH PRIOR WRITTEN CONSENT FROM INGAL CIVIL PRODUCTS

PROJECT	INGAL CIVIL PRODUCTS PART No.
TITLE	DRAWING No.
EZY-GUARD 4 SURFACE MOUNT CAST IN ASSY NZTA SPEC GROUND BEAM DETAIL	EZY-SM-136