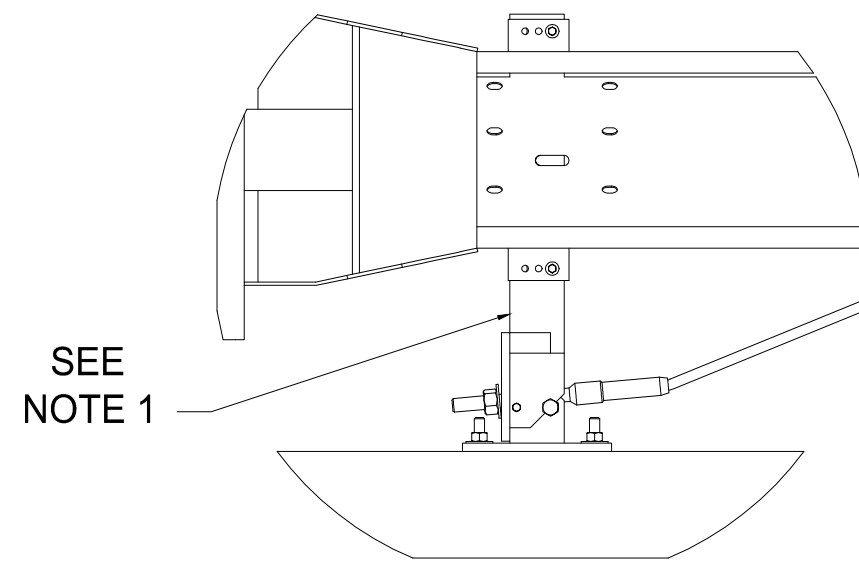
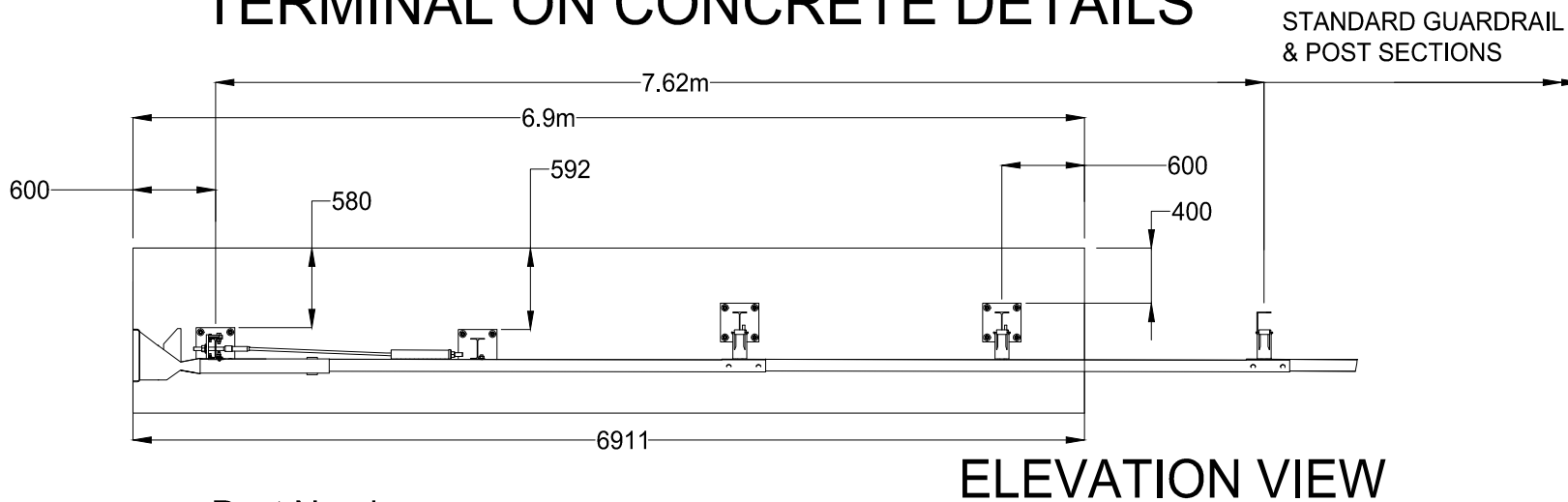
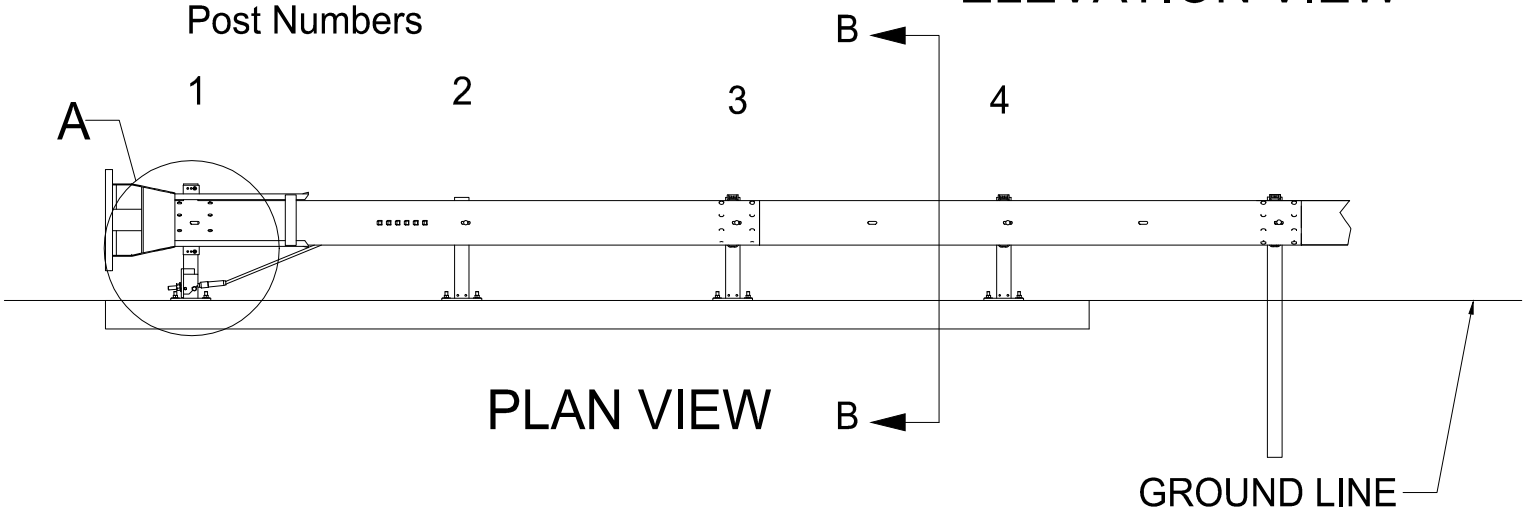


TERMINAL ON CONCRETE DETAILS

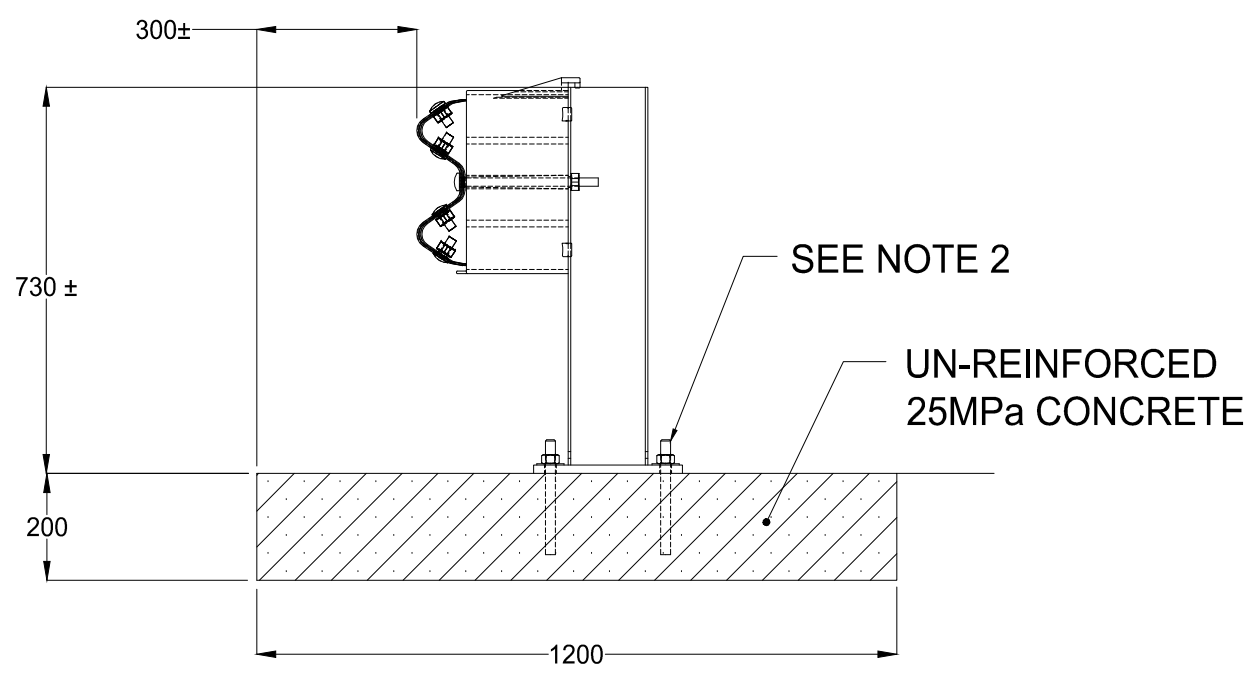


SEE NOTE 1

DETAIL A



PLAN VIEW



SECTION B-B

BILL OF MATERIALS		
PART NO	DESCRIPTION	QTY
10000985	W Beam 3810mm NLL	1
10001416	ET-2000 3810mm NLL Anchor Rail Galv	1
10001422	ET-2000 Cable Anchor Fitting Galv	1
10001218	Bearing Plate 200x200x16mm	1
10001419	ET-2000 Extruder Head Galv	1
10000719	Cable Assembly 2m	1
10001298	5/8" ROUND WASHER 1 3/4" OD GL	2
10001299	5/8" HEX NUT GALV	2
10001300	5/8" X 10" G/R BOLT GALV	2
10001248	M16 x 32 Splice Bolt Grade 8.8	17
10001239	M16 Oversize Nut	17
10001284	3/4" ROUND WASHER GALV	2
10001285	3/4" HEX NUT GALV	2
10001286	3/4" X 2 1/2" HEX HD BOLT GALV	2
10001397	ET-Plus 355mm King Block	2
10001287	3/8" ROUND WASHER GALV	4
10001288	3/8" FENDER WASHER 1 1/2" OD G	2
10001289	3/8" LOCK WASHER GALV	2
10001290	3/8" X 1 1/2" HEX HD BOLT GALV	2
10001294	7/16" HEX NUT GALV	2
10001295	7/16" ROUND WASHER GALV	2
10001296	7/16" X 1 1/2" HEX HD BOLT GAL	2
10001297	7/16" LOCK WASHER GALV	2
10001291	3/4" LOCK WASHER GALV	2
10001292	3/8" X 2" HEX HD BOLT GALV	2
10001293	3/8" HEX NUT GALV	4
10006805	ET-Plus 714mm SYT post on 16mm Base Plate	3
10006812	ET-2000 776mm HBA Top Post Galv	1
10006815	ET-2000 HBA Base Plate Assy Galv	1

- NOTES:
- POST 1 IS A MODIFIED HBA POST, AND POSTS 2 - 8 ARE MODIFIED SYT POSTS. THERE IS NO STRUT.
 - HILTI HT-Z (OR EQUIVALENT) Ø20 X 215mm ANCHORS, 4 PER POST. EMBEDMENT DEPTH IS 150mm ± 5. INSTALL ACCORDING TO MANUFACTURER'S INSTRUCTIONS USING HILTI HIT-HY 200-R EPOXY (OR EQUIVALENT). DO NOT DRILL DEEPER THAN 165mm. TYPICAL FOR POSTS 1 - 8.
 - ASSUMED SOIL CONDITIONS: $\phi = 30^\circ$
 $y = 19 \text{ kN/m}^3$
 or: $C_u = 50 \text{ kPa}$
 - MIN OFFSET FROM HINGE POINT TO CONCRETE PAD: 1m.
 - WHERE GROUND CONDITIONS VARY FROM THE AFOREMENTIONED, A SITE SPECIFIC FOUNDATION MAY NEED TO BE DESIGNED.

REV	DATE	DESCRIPTION	DRAWN	CHECKED	APPROVED	DRAWING NUMBER	REFERENCE DRAWINGS	NAME	DATE	PROJECT	TITLE	DRAWING No.
5	27-06-16	NOTES ADDED	MC	SE	LG			TRIN	510602-TOC	INGAL CIVIL PRODUCTS 57-65 AIRDS ROAD MINTO, N.S.W AUSTRALIA 2566 PH. +61 2 9827 3333 FAX +61 2 9827 3300 www.ingalcivil.com.au	ET2000 PLUS - TL2 STEEL YIELDING TERMINAL POST SYSTEM SURFACE MOUNT CONFIGURATION	INGAL CIVIL PRODUCTS PART No. CAB-STD-128
4	23-02-2016	BOM ADDED	MC	SE	LG			LG	07-04-2014			
3	05-12-2014	'OR EQUIVALENT' ADDED	LG	SE	LG			LG	07-04-2014			
2	12-08-2014	IMPERIAL ANCHOR CHANGED	LG	SE	LG							
1	06-08-2014	NOTE CORRECTION	LG	HF	LG							

J:\SALES & MARKETING\ENGINEERING ARCHIVE\STANDARD\CAB-STD-128 - ET2000 BPM.TL2.DWG