

*Product Manual*



Release 10/21

[www.ingalcivil.co.nz](http://www.ingalcivil.co.nz)

## 1.0 Introduction

Introducing Ezy-Guard HC, a member of the Ezy-Guard family, the next generation steel guardrail barrier providing superior motorist safety and more metres of barrier for your dollar.

Ezy-Guard HC is crash tested to the latest performance standard distinguishing it from all existing public domain guardrail barrier systems in New Zealand.

The Z-post profile shields post edges from vulnerable road users and provides sectional strength when driving through difficult conditions.

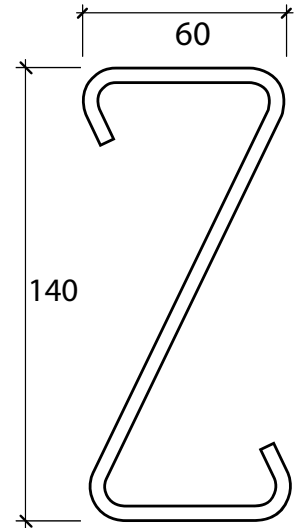
An Ezy-HC-Carriage is used to secure the Thrie-beam rails to the posts eliminating the requirement for blocking/offset pieces and rail stiffening plates. This unique connection provides a soft ride-down for the occupants and smooth vehicle containment and redirection.

## 2.0 Specifications

Ezy-Guard HC Z-Post Length:	2,000mm
Ezy-Guard HC Z-Post Mass:	19.5kg
Ezy-Guard HC System Mass:	28.8kg per metre
Rail Height Above Ground:	980mm
Z-Post Height Above Ground:	970mm
Post Spacing:	2,000mm
Ezy-Guard HC System Width:	245mm
MASHTL3 Crash Test Deflection:	1.16m
MASHTL4 Crash Test Deflection:	1.77m

Ezy-Guard HC Thrie-beam rails and Z-posts are manufactured from hot-rolled steel flat products in accordance with AS/NZS 1594. These items are hot dip galvanised in accordance with AS/NZS 4680 after fabrication leaving no surface untreated.

State specific product acceptance details are available upon request from your local Ingal representative. Acceptance of product variants should be confirmed prior to installation.



## BARRIER SELECTION TABLE

Guardrail System	Performance Class	Deflection	Surface Mount Option	Environmental Protection
Ezy-Guard 4	MASH TL3 NCHRP-350 TL4	1.65m	Yes	Hot Dip Galv to AS/NZS 4680
Ezy-Guard HC	MASH TL4 MASH TL3 NCHRP-350 TL4	1.77m 1.16m 1.0m	Yes	Hot Dip Galv to AS/NZS 4680



Approach Transition Rail 1905mm  
10001809



Departure Transition Rail 1905mm  
10001811



W Beam 3810mm NLL  
10000985



Thriebeam 4000mm NLL  
10000837



Ezy-Guard HC Post 2000mm  
10005540



Ezy-Guard 4 Post 1650mm  
10007390



Ezy-Guard HC Carriage  
10004116



Ezy-Guard 4 Carriage  
10004115



Carriage Bolt M16 x 30mm  
10001832



Splice Bolt M16 x 32  
10001248



Oversized M16 Nut  
10001239



### 3.0 Crash Test Analysis

Crash test guidelines provide a minimum set of requirements that a roadside barrier has to meet in order to demonstrate its satisfactory impact performance.

Whilst crash test guidelines cannot include all possible impact conditions that may be experienced in the real world, the crash test matrix is selected to represent a “worst practical condition” for a roadside barrier impact.

Ezy-Guard HC has been fully crash tested and evaluated according to the specifications for Test Level 4 (TL4) of the AASHTO Manual for Assessing Safety Hardware (MASH) and also to NCHRP-350 Test Level 4.

The MASH specification is an update to and supersedes NCHRP Report 350 for the purposes of evaluating new safety hardware devices.

In the revised standard AS/NZS 3845.1:2015, MASH has been nominated as the basis of testing procedures for road safety barrier systems.

The MASH TL4 crash test matrix requires the following impacts;

- 1,100kg car travelling at 100km/h and 25 degrees.
- 2,270kg pick-up travelling at 100km/h and 25 degrees.
- 10,000kg truck travelling at 90km/h and 15 degrees.

Crash test impact conditions are defined by the mass, speed, and angle of the impacting vehicle. Crash test standards and performance levels can be compared by calculating the impact severity (IS).

$$IS = \frac{1}{2} M (V \sin \theta)^2$$

Where IS is the impact severity in joules (J), M is the test inertial mass of the vehicle in kilograms (kg), V is the impact speed in metres/second (m/s) and  $\theta$  is the impact angle in degrees.

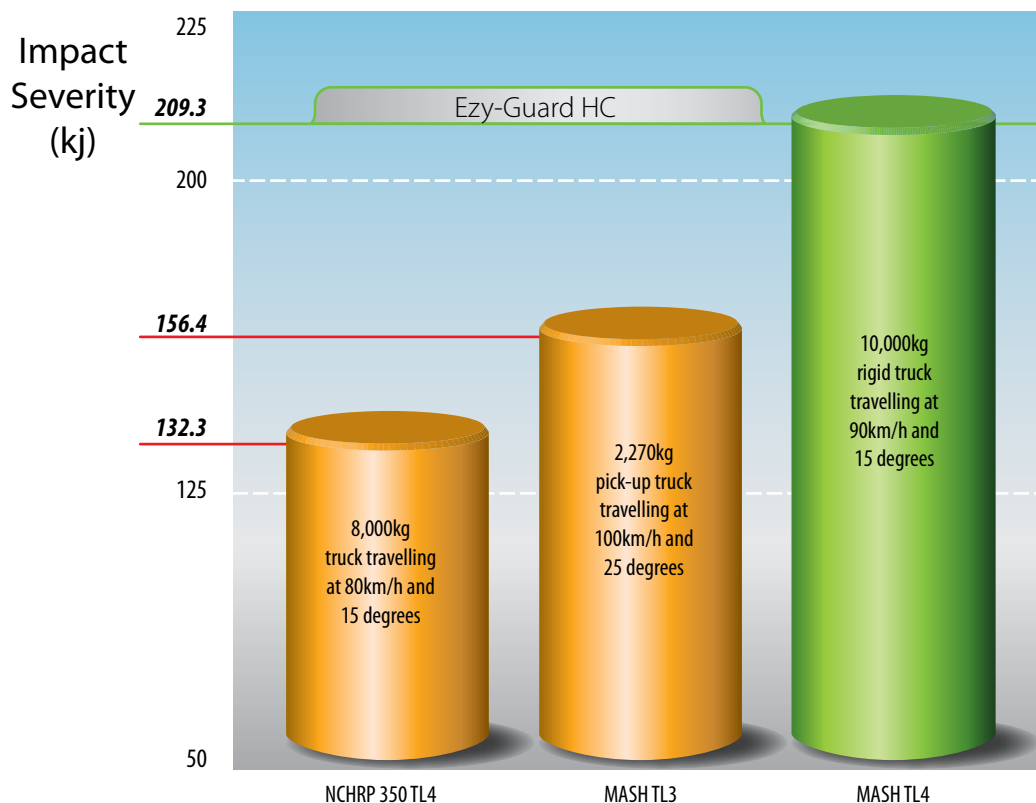


Figure 1: Comparison of Crash Test Impact Severities

#### 4.0 Consideration for Vulnerable Road Users

Vulnerable road users include motorcyclists, pedestrians, cyclists and other road users. Ezy-Guard HC has been designed to provide consideration to vulnerable road users as follows:

##### **Rounded Post Corners.**

The Z-post contains smooth, rounded post edges and corners mitigating the risk and severity of fractures and/or contusions.

##### **Energy Absorbing, Ductile Z-Posts.**

The Z-posts are designed to yield by bending near ground level. This bending action absorbs impact energy reducing the potential for post fracturing. A fractured or split guardrail post presents a significant laceration hazard to vulnerable road users.

The Ezy-Guard HC design does not contain any elements that become projectiles and there are no aggressive edges.

##### **Shielded Posts.**

The innovative design of Ezy-Guard HC shields the top of the supporting Z-posts by positioning the top of the

rail above the posts. This eliminates dangerous snag points, reducing the potential for the barrier to dismount motorcyclists or cyclists. This is a significant safety benefit compared to traditional guardrail and cable barrier systems.

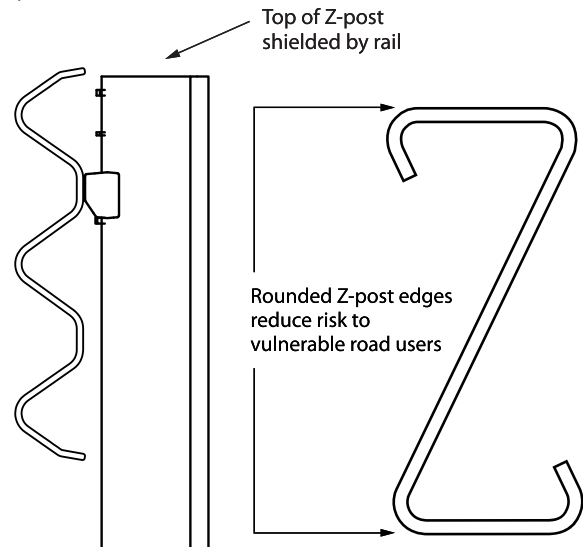


Figure 2: Ezy-Guard HC Considerations for Vulnerable Road Users



## 5.0 Features and Benefits

### 5.1 Fully Compliant to MASH TL4

Ezy-Guard HC, a member of the Ezy-Guard family, is fully compliant to MASH TL4.

The MASH TL4 test condition represents a larger impact energy when compared to NCHRP 350 Test Level 4 impacts.

The MASH TL4 compliance demonstrates the systems ability to contain and redirect the 10,000kg truck which is 2000kg heavier than the NCHRP-350 TL4 truck.

**MASH TL3 COMPLIANT**

**NCHRP-350 TL4 COMPLIANT**

**MASH TL4 COMPLIANT**

### 5.2 Rapid Installation & Repair

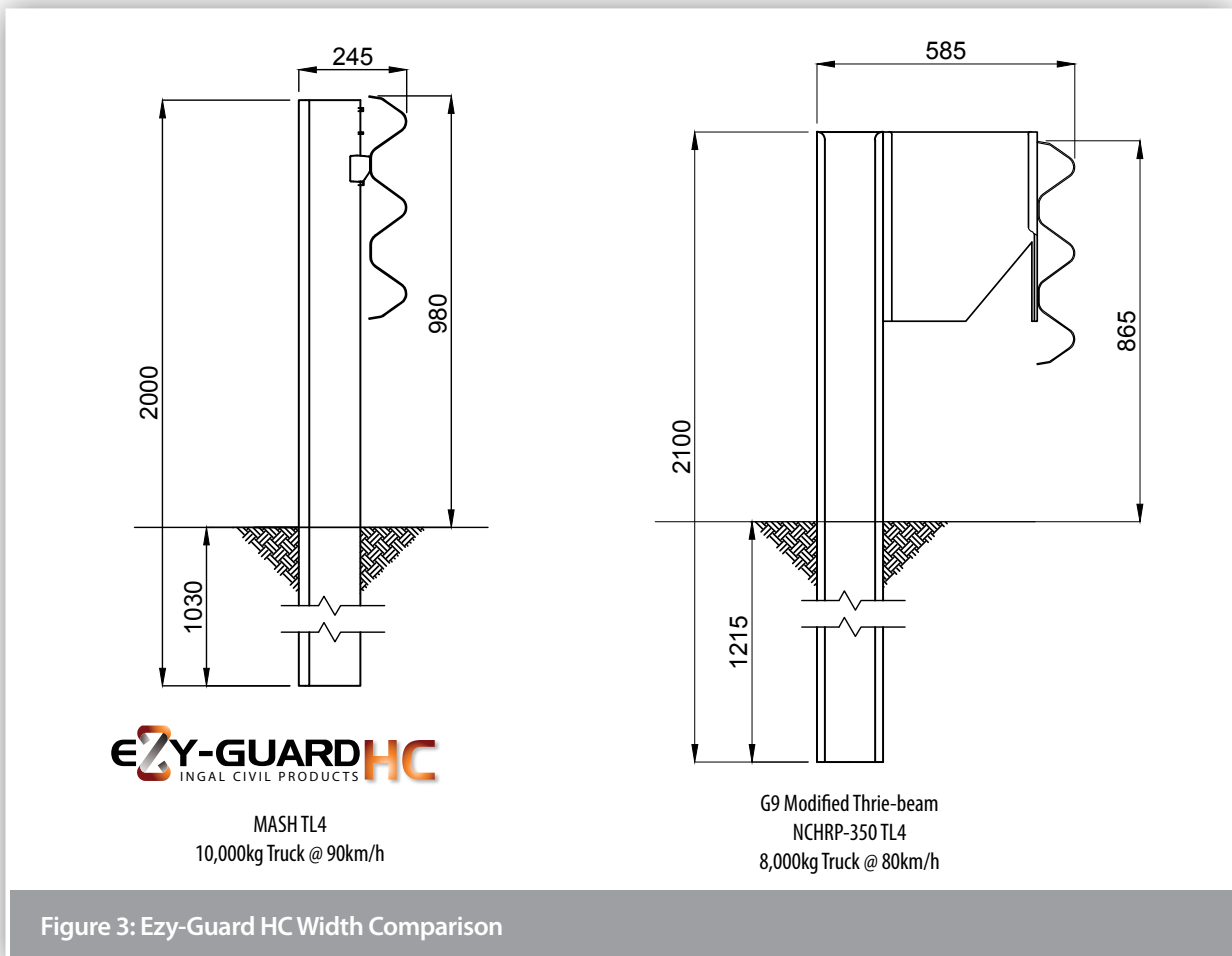
Ezy-Guard HC installation can be up to twice as fast to install than conventional guardrail barriers and unlike cable barrier systems, no concrete is required.

The Ezy-Guard HC design uses fewer components and features 2,000mm Z-posts that are rapidly driven into the ground. The Z-post embedment depth is just 1,030mm, a significant reduction when compared to other Thrie-beam guardrail posts. This reduces installation time providing significant cost savings.

Since the Z-posts are designed to yield by bending near ground level, damaged posts can be removed easily which reduces the time spent by work crews on the roadside.

### 5.3 Narrow Width

With a system width of just 245mm, Ezy-Guard HC is significantly narrower than the traditional guardrail barriers that incorporate the use of blocking pieces. Ezy-Guard HC conserves valuable formation width and allows a greater recovery width to be provided for errant vehicles.



#### 5.4 Installation in Rock, Asphalt or Concrete Mowing Strips

The design of the Z-post differs from traditional posts in that it relies on the yielding of the post by bending near ground level rather than the yielding of the surrounding soil during a vehicle impact. This makes the Z-post suitable for installation in rock, asphalt or concrete mowing strips.

A traditional guardrail post is designed to absorb some crash energy through post rotation in the soil prior to post failure. Restraining these traditional posts by setting them in narrow holes drilled into solid rock, by setting them in thick asphalt layers or concrete, or by placing a mowing strip around the posts can lead to a failure of the system to safely contain and redirect the errant vehicle.

#### 5.5 Manual Handling

Ezy-Guard HC uses fewer components than the public domain guardrail systems. Z-posts weighing just 19.5kg are lighter than traditional Thrie-beam posts. The lightweight Z-post reduces manual lifting by installation crews.

The rounded edges of the Z-post provides a handlelike grip when lifting, reducing the possibility of hand lacerations. The Z-profile allows the installer to maintain a firm grip and facilitates correct lifting techniques.

#### 5.6 Locally Designed & Produced

Ezy-Guard HC is manufactured in New Zealand by Ingal Civil Products using steel manufactured by BlueScope Steel. Z-posts and rail are stamped providing traceability to material mechanical and chemical analysis certificates. Hot dip galvanising is performed internally by Ingal and daily inspections ensure zinc thickness readings are in accordance with AS/NZS standards..

#### 5.7 Soft Ride-Down Decelerations

The Ezy-HC-Carriage controls the release of the Thrie-beam rail from the Z-posts. This controlled release reduces the potential for vehicle pocketing and provides a soft ridedown for vehicle occupants.



## 6.0 Performance

Ezy-Guard HC provides protection from roadside hazards located close to the edge of the travelled way. The sectional strength of the Z-post reduces lateral deflection whilst providing controlled containment and redirection.

Crash testing guidelines provide a set of requirements that is “worst practical conditions” in order to demonstrate the barriers impact performance. When the combined effects of vehicle mass, impact speed and angle of impact are considered, the testing criteria represents the extremes of impact conditions to be expected in realworld situations.

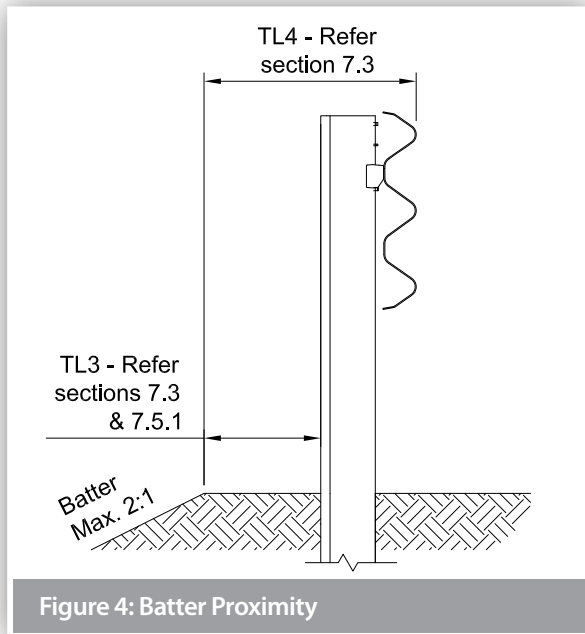


Figure 4: Batter Proximity

## 6.1 Deflection

The transverse deflection of a barrier during a crash is dependent upon a number of factors, including the following:

- Mass of the impacting vehicle;
- Speed of the impact vehicle; and
- Angle of the vehicle impact.

The MASH TL3 deflection for Ezy-Guard HC is 1.16m and the MASH TL4 deflection is 1.77m. The NCHRP-350 TL4 deflection is 1.0m. A range of deflections for TL2 and TL3 can be found in Table 1a, whilst Table 1b shows deflection and working widths for the MASH TL4 10,000kg truck with various post spacings.

## 6.2 Slopes

The maximum cross fall for an installation of Ezy-Guard HC is 10H:1V (10%).

Proximity to a batter slope will depend on the required containment level. For TL3 containment, the recommended minimum offset from hinge point to back of post is 300mm for a 2H:1V slope. For a TL4 containment, the offset from face of rail to the hinge point should be equal to the expected deflection, refer section 6.1.



Table 1a: Dynamic deflections under various post spacing and impact speeds

Containment Level		Speed (km/h)	Vehicle: 2,270 kg Impact Angle: 25°		
			Post Spacing (m)		
			2	1	0.5
Dynamic Deflection (m)	MASH TL3	100	1.16	0.81	0.53
		80	0.8	0.6	*
	MASH TL2	70	0.69	0.5	0.27
		60	0.59	0.35	*

\* Not currently available. Please contact your local Ingal Civil representative for more information.

Table 1b: MASH TL4 working width and dynamic deflections under various post spacing

Vehicle: 10,000 kg Impact Angle: 15° Speed: 90 km/h			
Post Spacing (m)	2	1	0.5
Deflection (m)	1.77	1.27	0.88
Working Width (m)	2.46	1.88	1.16

## 7.0 Installation

### 7.1 Terminals

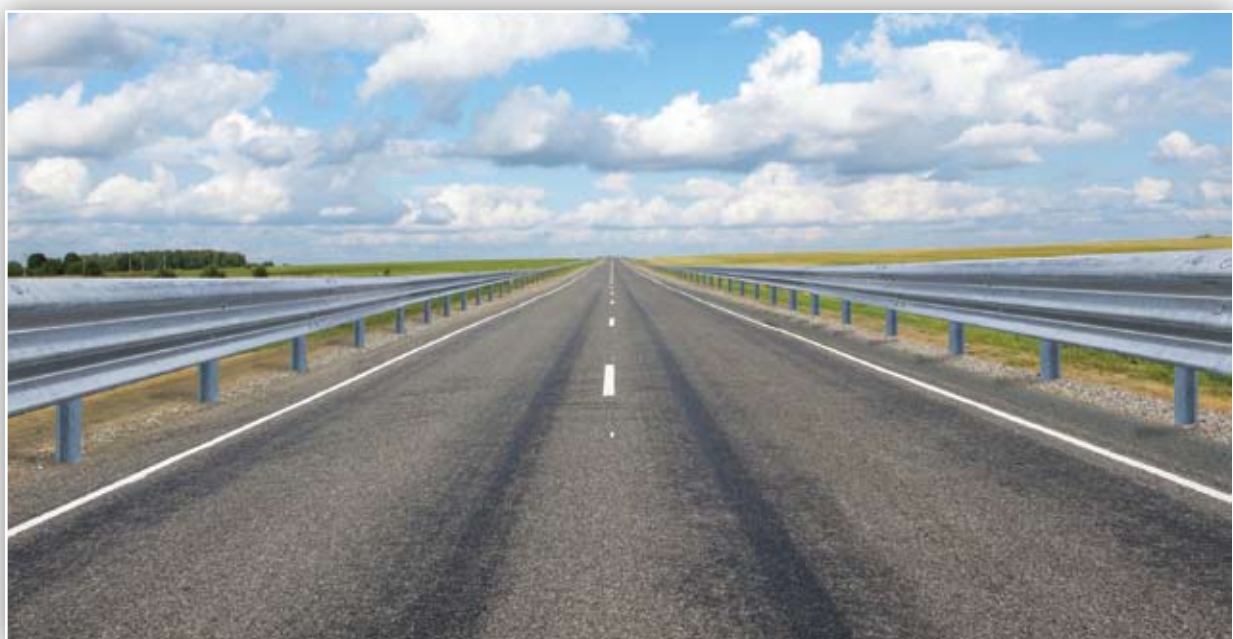
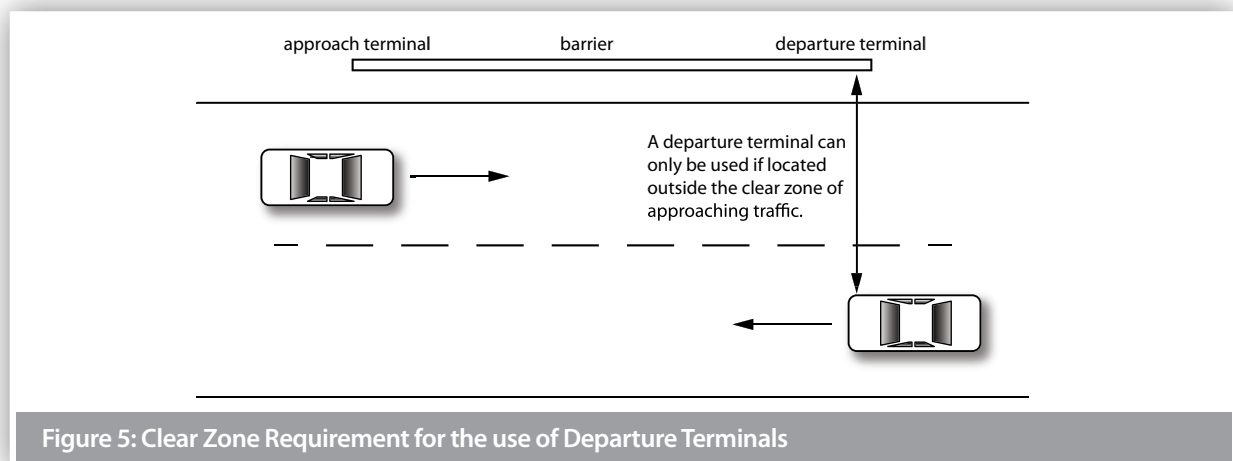
Guardrail end terminals are installed at the beginning and end of a run of guardrail. Their primary purpose is to anchor the longitudinal barrier and to minimise deflection. Crashworthy terminals are typically used in locations where they can be impacted end-on as they are designed to provide a soft gating impact if impacted near the end rail. This prevents any spearing of an errant vehicle. Part of the end-terminal may also be redirective.

Ezy-Guard HC is installed at a system height of 980mm, measured to the top of the rail. This height is compatible with our asymmetric 1,905mm transition bracket and the SoftStop terminal, refer to installation drawings.

Terminals should be installed in accordance with the proprietor's drawings and specifications. Z-posts are not to be used in the terminals unless approved by the proprietor.

The installation of terminals will typically incorporate the use of blocking/offset pieces positioned between the posts and rail. This will require the supporting posts to be offset from the set-out line used for the installation of the Z-posts which do not require blocking pieces.

In addition, the post spacing used in the terminals and transitions may vary from the 2m spacing used for installation of Ezy-Guard HC. The required post spacing for terminals and transitions will be contained in the proprietor's drawings.



## 7.2 Minimum Length Requirements

The recommended minimum length of need for Ezy-Guard HC is dependent on the design containment level. For measurement of minimum installed length, refer Figure 6 below.

For a MASH Test Level 3 containment, where the design vehicle is a 2,270kg pick-up, the minimum length of Ezy-Guard HC is 20m. This does not include the W-Beam transition brackets (refer item 1 on drawing EZY-HC-002), W-Beam or any of the End-Terminals.

For a MASH Test Level 4 containment, where the design vehicle is a 10,000kg truck, the minimum length of Ezy-Guard HC is 26m. This does not include the W-Beam transition brackets (refer item 1 on drawing EZY-HC-002), W-Beam or either of the End-Terminals.

## 7.3 Sequence of Work

Where Ezy-Guard HC is being constructed on a road open to traffic, it is recommended that the work commence at the end closest to the approaching traffic. Leading terminals and transitions shall be commissioned at the earliest practical time.

## 7.4 Modifications

Ezy-Guard HC shall be constructed in the configuration as detailed in Ingal Civil Products' drawings. This is the configuration in which the system has been crash tested. No modifications shall be made to the system unless verified by Ingal Civil Products.

Flame cutting of rails or posts is not permitted. Saw cutting and drilling is permitted in the event that a post is to be installed at an irregular spacing and/or rock is encountered and the post embedment depth has been modified in accordance with Table 2.

Any modification carried out after fabrication will require repair to the galvanized coating. This is undertaken by applying two coats of an organic zinc rich epoxy paint complying with AS/NZS 3750.9. This is to be applied to the repair areas in two coats. Each coat shall have a minimum dry film thickness of 50 µm.

## 7.5 Soil Requirements & Embedment Depth

The Z-post is designed to yield by bending near ground level during impact. Provided the post is embedded

in material that allows this failure mechanism to be replicated, the Ezy-Guard HC functionality will be retained. The Z-posts will provide lateral resistance until the impacting vehicle causes deformation of the posts. At this point the Ezy-HC-Carriages will provide a controlled release of the rail from the Z-posts resulting in safe vehicle containment and redirection.

### 7.5.1 Standard Soil

Ezy-Guard HC has been evaluated for installation in standard soil in accordance with AASHTO standard specifications for 'Materials for Aggregate and Soil Aggregate Subbase, Base and Surface Courses', designation M 147.

When installed in weak soil, the 1,030mm embedment depth of the Z-post is sufficient for installation up to 500mm of the rounding point on 2:1 embankment slopes. If installation is required within 500mm of the rounding point, the post embedment depth is required to be increased to 1,350mm. A longer Z-post is available from Ingal Civil for these applications.

For a TL4 containment level, installations within 1.7m from the hinge point should be considered within the requirements of the road controlling authority Extended Design Domain requirements.

### 7.6 Post Pullover Test

In the event that the soil type cannot be verified, the suitability of the post foundation can be established through a post pullover test.

This is undertaken by applying a 1kN load to the post, 700mm above ground level. The load is applied prior to the attachment of the rail. Displacement at the base of the post shall not exceed 1mm whilst the load is applied. Refer Figure 7 for further detail.

An alternative post pull over test can be achieved via a more destructive means, whereby a load of 1.2 tonnes is applied to the test post at a height of 700mm. This loading approximates the probable capacity of the post and should be able to be maintained with minimal rotation of the post in the soil. At the completion of the testing the post should be removed from the test location and should not be used in the installation.

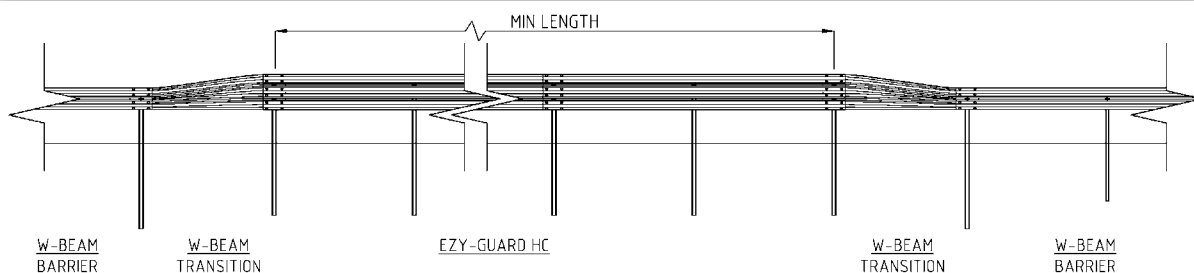
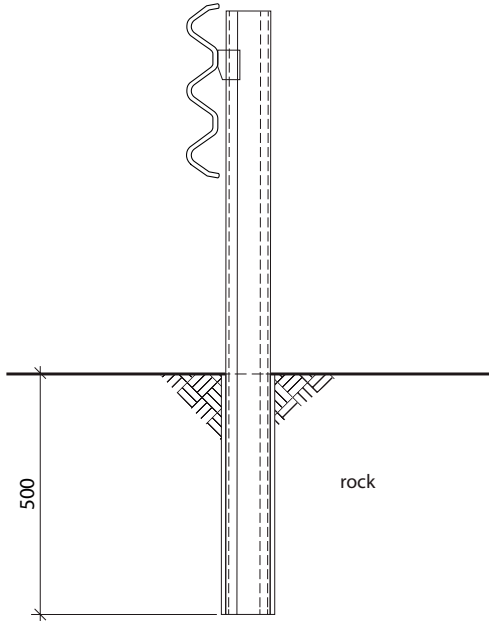
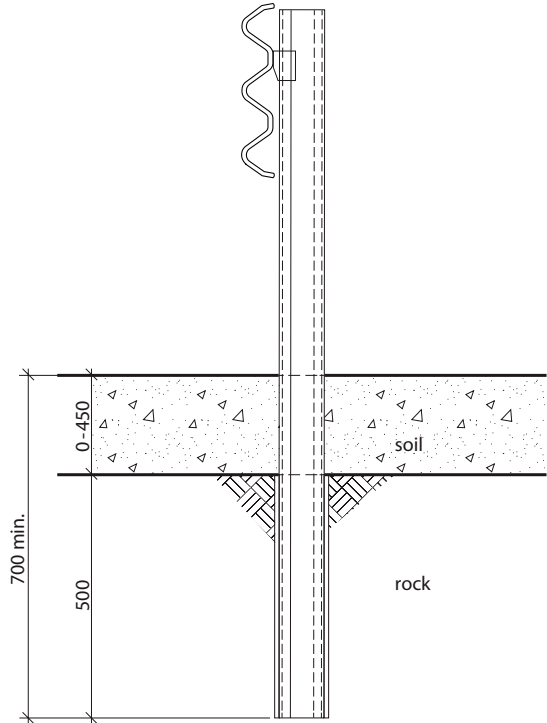
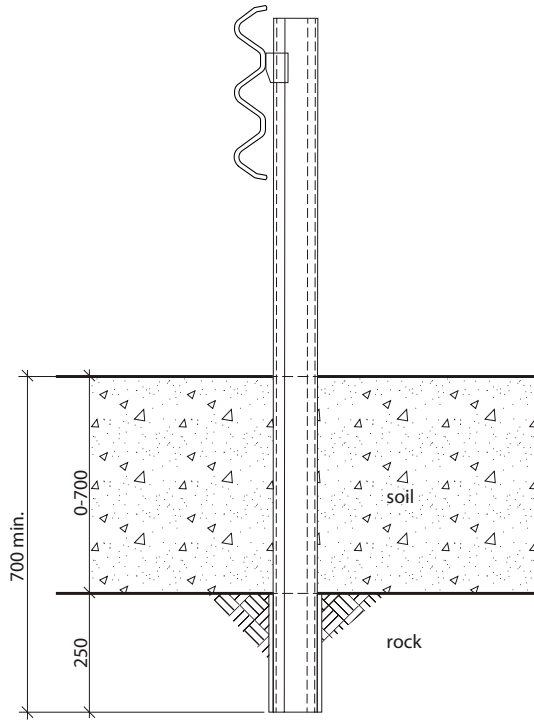
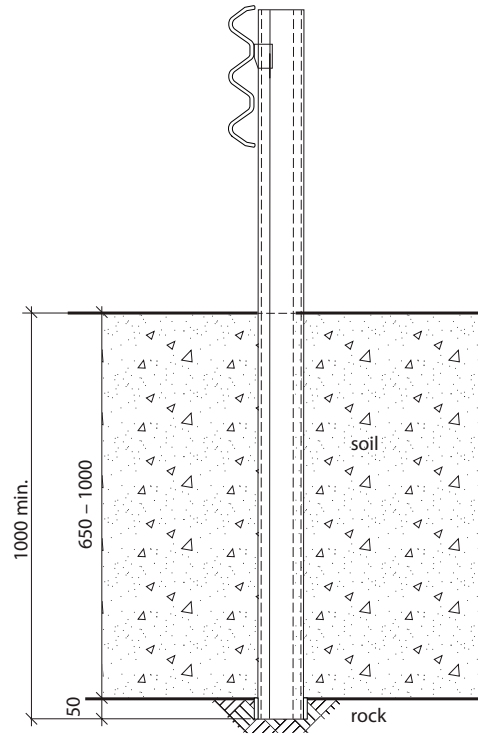
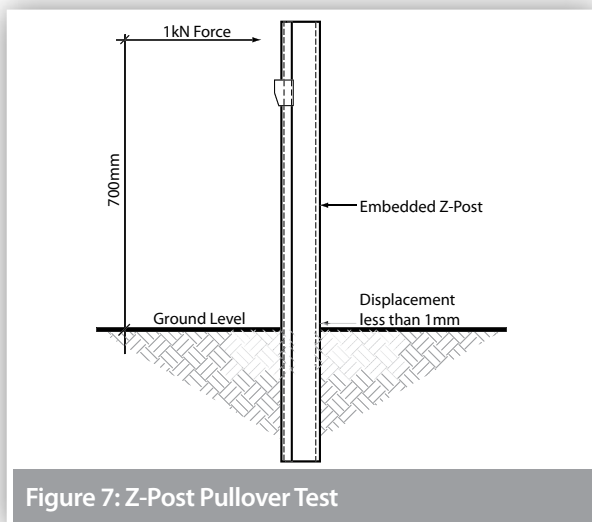


Figure 6: Minimum length measurement

**Table 2: Installation of Ezy-Guard HC Z-Posts in Rock**

Site Condition	Installation Requirements	
Rock is encountered at the surface.	Drill a 160-300mm diameter hole to a depth of 500mm, install the post in the hole and backfill.	
Rock is encountered within 450mm of the surface.	Drill a 160-300mm diameter hole 500mm into the rock or to a minimum total post embedment depth of 700mm, whichever comes first, install the post and backfill.	

Site Condition	Installation Requirements	
Rock is encountered 450mm to 650mm below ground.	Drill a 160-300mm diameter hole 250mm into the rock or to a minimum total post embedment depth of 700mm, whichever comes first, install the post and backfill.	
Rock is encountered 650mm to 1000mm below ground.	Drill a 160-300mm diameter hole 50mm into the rock or to a minimum total post embedment depth of 1000mm, whichever comes first, and install the post and backfill.	



### 7.7 Posts on Base Plates

In the event that the Z-post cannot be installed to the required in-ground depth, the use of a base plate mounted post on a suitable foundation can be adopted. Posts on base plates are typically used at culvert locations, and in areas where underground services restrict posts from being driven into the ground. Refer to Ingal Civil Products drawings for the installation of posts on base plates and to your local Ingal representative for appropriate footing design conditions.

### 7.8 Non-Standard Post Spacing

Occasionally, an underground services or obstruction may prevent a post from being installed at the recommended spacing. In these instances, there are a number of options:

- Do not install the post and leave a 4m gap. This will result in a higher deflection if impacted in that location. This is permissible for no more than one location in 30m of Ezy-Guard HC.
- If the underground conflict is short in length, the post can be moved 1m upstream or downstream from the original position. Special rails are available from Ingal with slots at 1m intervals. Alternatively, the rail can be drilled to take the M16 carriage bolt. The drilled hole should have the galvanized coating repaired in accordance with section 7.4.
- A concrete foundation can be installed and a post on baseplate can be anchored to the foundation. Refer section 7.7 for further details.

### 7.8 Curving of Rails

Guardrail used for the assembly of Ezy-Guard HC may be shop curved to fit any radius from 2.4m to 45m Convex.

Ezy-Guard HC for Concave Curves can be used from 2.4m to 45m. Curves in excess of 45m do not require shop curving as the rail can be field installed to suit. Guardrail may be curved either concave or convex to the traffic face and can be part-curved along its length to suit site requirements.

### 7.8.1 Measuring Curvature

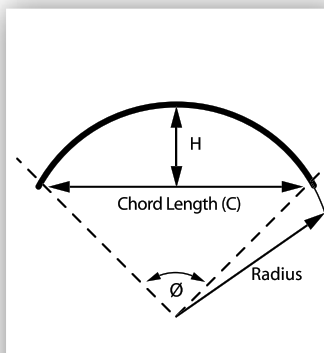
1. Mark along the arc of the curve at 4m intervals.
2. Measure the corresponding chord length (C) - refer to Figure 8.
3. Measure the corresponding centre offset (H) - refer to Figure 8.
4. Use the values for C & H to select the radius from Table 3.
5. Determine the curvature orientation from Figure 9.

### 7.8.2 Identification of Curved Rails

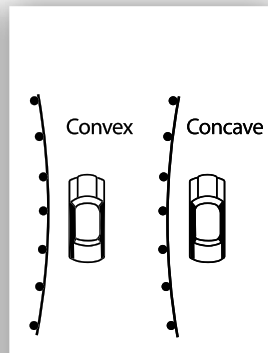
Where a rail has been factory curved by Ingal, the radius of curvature is marked on the rear face of the rail.

**Table 3: Rail Curvature Values**

Radius (m)	Ø Degrees	C (mm)	H (mm)
2.4	95	3553	786
3	76	3710	642
4	57	3835	490
5	45	3894	395
6	28	3926	330
7	33	3946	284
8	29	3958	249
9	26	3967	221
10	23	3973	199
12	19	3982	166
14	16	3986	143
16	15	3990	125
20	12	3993	100
24	10	3995	83
28	8	3997	71
32	7	3997	62
35	7	3998	57
40	5	3998	50
45	5	3999	44



**Figure 8:**  
Curvature Measurements



**Figure 9:**  
Curvature Orientation

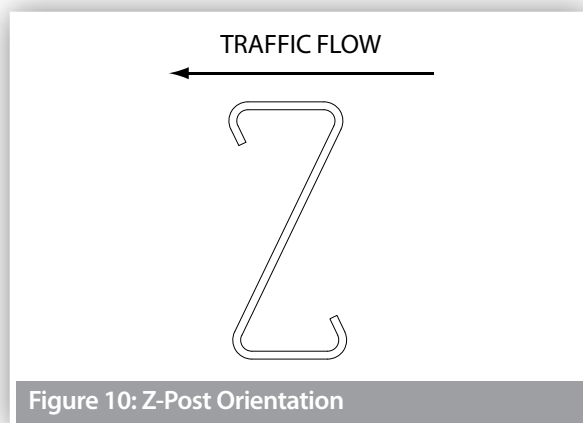
## 7.9 Installation Sequence

The following written instructions should be read in conjunction with Ingal Civil Products' drawings.

A generic Safe Work Method Statement is available from Ingal Civil Products to assist in the safe installation of Ezy-Guard HC.

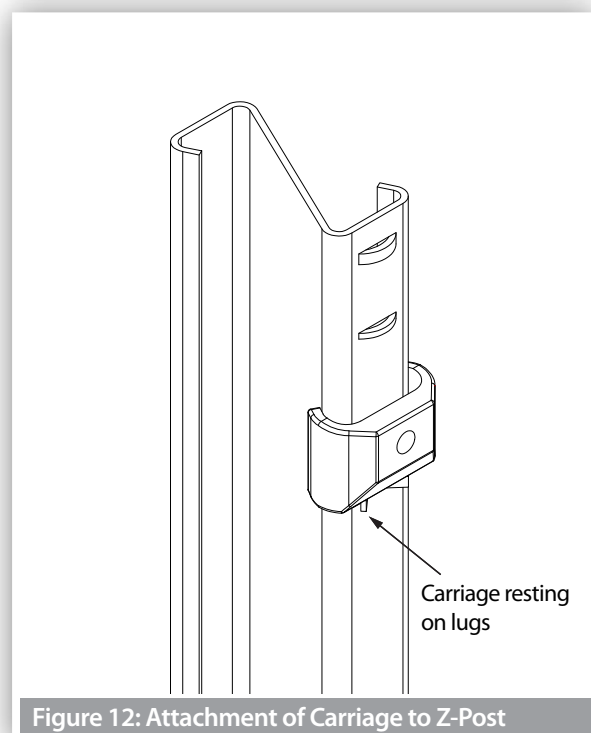
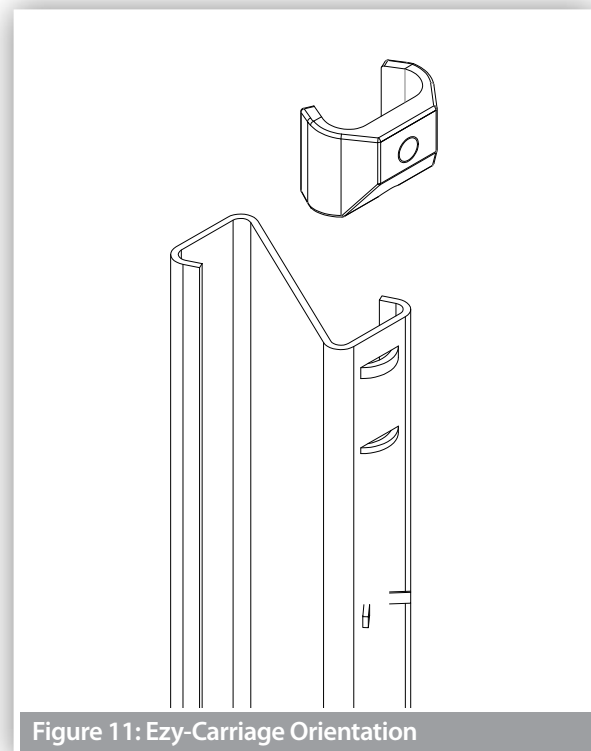
Only items purchased from Ingal Civil Products shall be used for the construction of Ezy-Guard HC.

1. Ensure the area has been inspected for underground hazards and that suitable traffic control is in place.
2. Post locations are marked ensuring any fixed object hazard to be protected is located outside the expected dynamic deflection of the barrier.
3. The post in relation to the direction of traffic is orientated as per Figure 10 and 11.



4. Posts are driven directly into the ground and should be vertical. The post installation process shall not cause damage to the post, such that it reduces the effective operation of the safety barrier or its design life, or introduces sharp tearing edges, nor shall it cause damage to pavement. If the Ezy-HC-Carriage cannot freely move as it is attached to the post as a result of deformation of the post during installation, then the post shall be replaced. The use of a vibrating post hammer will reduce deformation to the top of the post and install the post at a controlled rate.
5. Alternate to driving the posts, a minimum 200-300mm hole can be augured and the post placed in the hole. The posthole is then backfilled with the material that was excavated. If installing in soil, the material should be placed in layers of 150mm and suitably compacted to not less than the density of the surrounding layers.
6. Posts are spaced at 2m – 1,905mm spacings are required on transitions to w-beam - and reduced spacings are required where requested by engineer.

7. The height of the Z-post above ground level is 970mm.
8. The Ezy-HC-Carriage is attached to the face of the post. The Ezy-HC-Carriage will come to rest on the positioning lug fabricated on the Z-post.



9. Rails are attached to the Ezy-HC-Carriage using the M16x30mm carriage bolts. The post bolts are identified by the socket recess located in the head of the bolt. The bolts are tightened to snug tight using a 10mm hex. key.
10. Rails are spliced together at every second post using M16x32mm mushroom head bolts and oversized nuts. There are 12 bolts required per splice connection. A pinch bar may be used to assist in the alignment of splice holes. The use of a driving pin to elongate the slots is NOT to be used since this may cause tearing of the rail at the slot location. The bolts are tightened to snug tight.

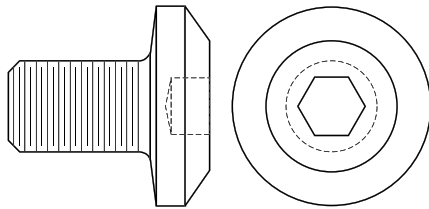


Figure 13: Carriage Bolt

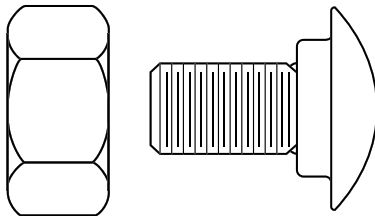


Figure 14: Splice Bolt & Nut

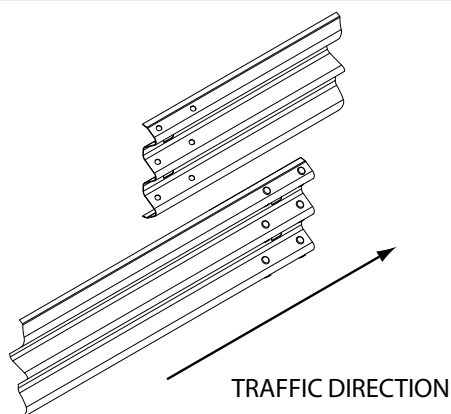


Figure 15: Orientation of Rail Lap

11. Rails are orientated so that no leading edge is presented to the traffic face as shown in Figure 15.
12. It is recommended that posts be installed only a few metres ahead of rail assembly to ensure correct post spacing and alignment. On curves, the rails can be used as a template and laid on the ground to determine post locations.
13. The construction of Ezy-Guard HC shall form a smooth line vertically and horizontally when viewed along the line of the system, free from humps, sags or other irregularities.
14. The Ezy-Guard HC components are to be free from splits, burrs or sharp edges after installation. Any minor damage is to be repaired in accordance with section 7.4.
15. Any disturbed pavement or material around a post shall be left dense, tight, and smooth so that resistance to water penetration is similar to that of the adjacent surface.

## 7.10 Installation Tolerances

- The tolerance on height of the barrier shall be plus or minus 20mm.
- The tolerance for the line of the barrier shall be plus or minus 20mm in plan view.
- The tolerance for departure from the upright axis shall be plus or minus 15mm at the top of the barrier.
- The tolerance on post spacing shall be plus or minus 25mm.

## 8.0 Maintenance

It is recommended that annual inspections be performed to ensure the following;

- The system is appropriately delineated;
- Debris has not accumulated around the system that may impede the performance of the barrier or the trajectory of an impacting vehicle;
- The system is suitably anchored with appropriate terminals and/or transitions. If the system is anchored with terminals, the cable assembly shall be taut and tensioned to its recommended value; and
- All splice bolts and post bolts are snug tight.

## 9.0 Product Storage

All posts and rails are hot dip galvanized in accordance with AS/NZS 4680. It is important that stored galvanized work is stacked so that each item is well ventilated and can adequately drain rainwater from its surfaces.

Poor storage can give rise to wet storage stain (white rust) which is caused by water (rain or condensation) in badly drained or ventilated conditions. This can occur very quickly, particularly in warm, humid conditions.

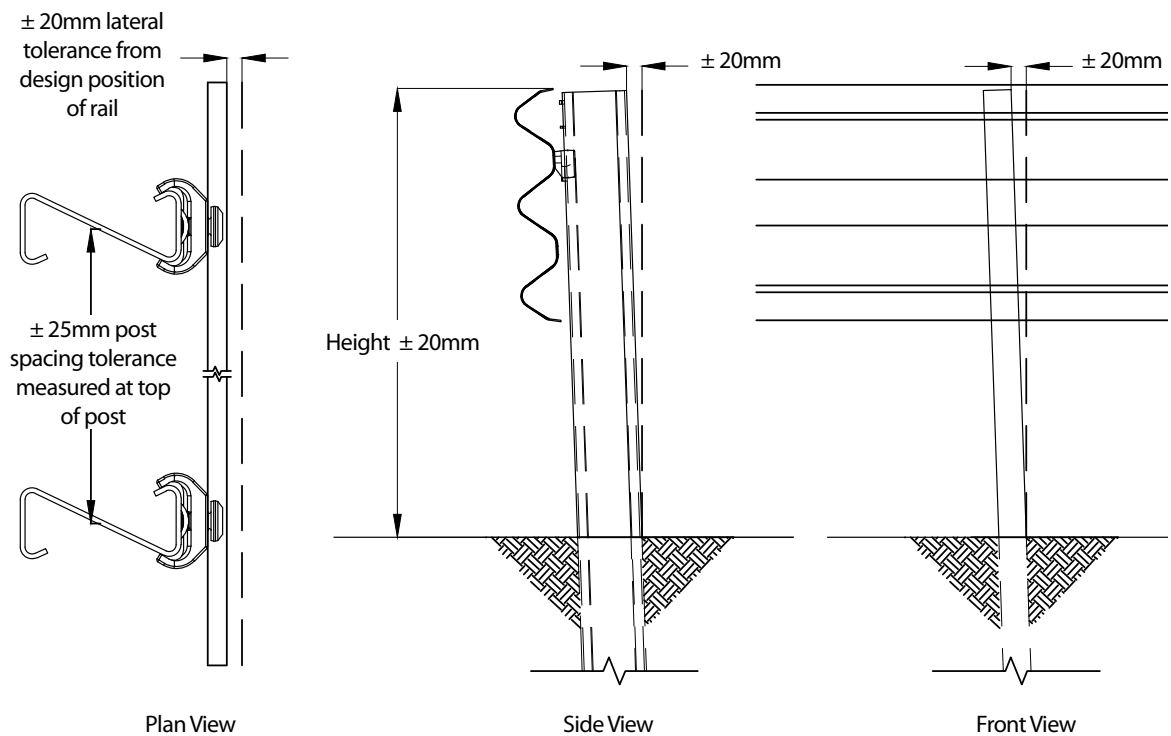


Figure 16: Ezy-Guard HC Installation Tolerances

### Ezy-Guard HC Installation Checklist

Customer:

Project:

Barrier ID:

Barrier Length:

Checked By:

Signed:

Date

Have the HC Z-posts been positioned every 2m	<input type="checkbox"/> Yes	<input type="checkbox"/> No
Carriages are positioned on the posts between the retaining lugs and the resistance tabs	<input type="checkbox"/> Yes	<input type="checkbox"/> No
Posts are installed to the correct height (970mm) and within the tolerances of section 7.14	<input type="checkbox"/> Yes	<input type="checkbox"/> No
Have the Ezy-HC-Carriages been correctly orientated	<input type="checkbox"/> Yes	<input type="checkbox"/> No
Have the rails been attached to the Ezy-HC-Carriages using the appropriate carriage bolt	<input type="checkbox"/> Yes	<input type="checkbox"/> No
Have the rails been spliced observing the correct lap	<input type="checkbox"/> Yes	<input type="checkbox"/> No
Have the rails been spliced with M16x32mm mushroom head bolts	<input type="checkbox"/> Yes	<input type="checkbox"/> No
Are all splice bolts and post bolts snug tight	<input type="checkbox"/> Yes	<input type="checkbox"/> No
Is the Ezy-Guard HC attached to suitable transition rails then anchored with approved terminals	<input type="checkbox"/> Yes	<input type="checkbox"/> No
Are the cables in the terminals tensioned to their nominated torque (taut) where required	<input type="checkbox"/> Yes	<input type="checkbox"/> No
Has any minor damage been repaired using two coats of an organic zinc rich paint	<input type="checkbox"/> Yes	<input type="checkbox"/> No
Does the barrier form a smooth line vertically and horizontally when viewed along the system	<input type="checkbox"/> Yes	<input type="checkbox"/> No
Is the barrier system free from humps, sags or other irregularities	<input type="checkbox"/> Yes	<input type="checkbox"/> No
Is the fill material around each post suitably compacted and level	<input type="checkbox"/> Yes	<input type="checkbox"/> No
Are the barrier components free from splits, burrs or sharp edges after installation	<input type="checkbox"/> Yes	<input type="checkbox"/> No

#### Disclaimer:

Important Note: The conformity of the installation is the responsibility of the installation contractor, and Ingal Civil Products accepts no liability for or in connection with any installation that is outside of the specifications of this manual or the NZTA. For more information, please refer to our Standard Terms and Conditions of Sale available on our website: [www.ingalcivil.co.nz](http://www.ingalcivil.co.nz).

## 10.0 Repair

### 10.1 Bush Fire Damage

Ezy-Guard HC does not contain any plastic, timber or rubber components that will burn.

The performance of galvanised coatings when subjected to fires depends upon a number of factors, such as flame duration and intensity.

Typical bushfire conditions may expose steel structures to an air temperature of 800°C for periods of up to 120 seconds, however zinc coatings are generally reflective and will not absorb heat at the same rate as an uncoated steel surface. Depending on the section thickness of the steel, the actual steel surface temperature may not exceed 350°C.

Typically, the bushfire flame duration and intensity are not high enough to compromise the structural strength of the steel. The hot dip galvanized coating will also typically remain unaffected through a bushfire event. If the bushfire causes damage to the galvanized surface, then the item(s) shall be replaced.

### 10.2 Damage Assessment

In the event of a vehicle impact, damage to the barrier is to be assessed in accordance with Table 4.

A Safe Work Method Statement is available from Ingal Civil Products upon request to assist in the safe repair of Ezy-Guard HC.

Any item that is replaced is to be reinstated observing the installation tolerances nominated in Section 7.11. Only items purchased from Ingal Civil Products shall be used for the repair of Ezy-Guard HC.

### 10.3 Dismantling Sequence

Prior to undertaking dismantling due to a vehicle impact, the area should be assessed for hazards. These include trip hazards, sharp edges and snag points.

During a vehicle impact, the rail will disengage from the posts as they yield by bending at ground level. The recommended dismantling sequence is as follows;

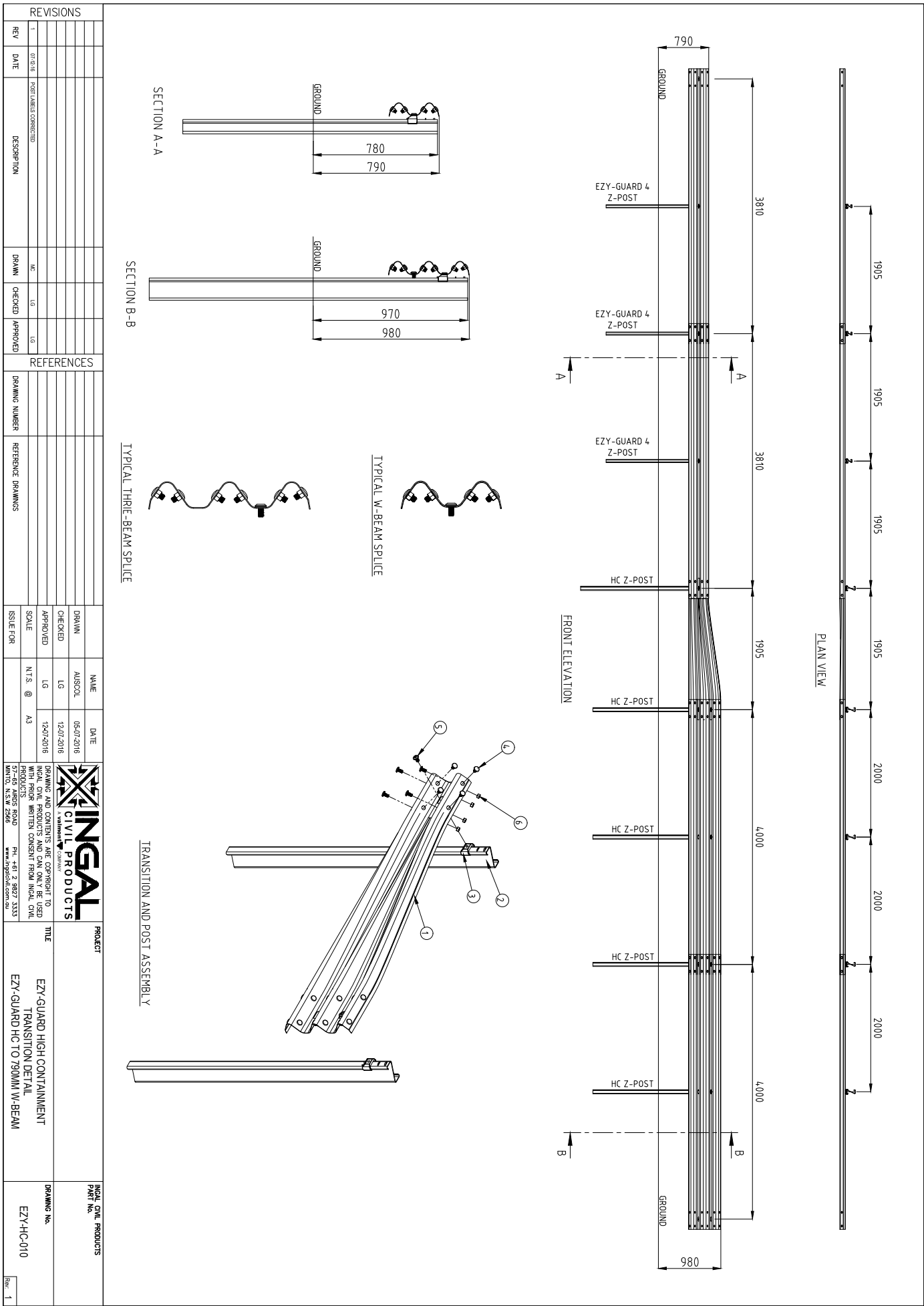
1. Dismantle the rail splice by removing the M16x32mm mushroom head bolts and nuts. There are 8 bolts located at each splice location.
2. Rails that are still attached to posts outside the impact area are disconnected by removing the carriage bolts. A 10mm hex key is required.
3. Once the area is clear of damaged rail, the posts can be removed. Since the posts yield by bending near ground level, a sling or chain can be attached below the bent section.
4. The damaged post can be lifted using a backhoe or post extractor attachment.
5. Any disturbed pavement material shall be left dense, tight, and smooth prior to the installation of replacement posts.
6. Rails, posts and carriages to be disposed of, should be recycled at a ferrous scrap recycling facility.

**Table 4: Damage Assessment of Ezy-Guard HC**

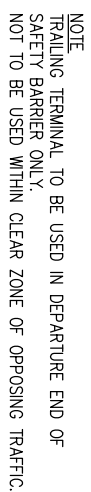
Type of Defect	Description of the Defect	Action to be Taken
Galvanizing damage on Z-Posts.	The sum total of the damaged area does not exceed 35cm <sup>2</sup> (0.5% of the total surface area). The sum total of the damaged area exceeds 35cm <sup>2</sup>	An organic zinc rich epoxy paint is to be applied to the repair area in two coats as per section 7.4. The Z-post is to be replaced.
Galvanizing damage on rails.	The sum total of the damaged area does not exceed 200cm <sup>2</sup> (0.5% of the total surface area) and no individual damaged area does not exceed 40cm <sup>2</sup> . The sum total of the damaged area exceeds 200cm <sup>2</sup> (0.5% of the total surface area) and/or an individual damaged area exceeds 40cm <sup>2</sup> .	An organic zinc rich epoxy paint is to be applied to the repair area in two coats as per section 7.4. The rail is to be replaced.
Mechanical damage on Ezy-HC-Carriages.	The Ezy-HC-Carriage has chips or cracks.	The Ezy-HC-Carriage is to be replaced.
Mechanical damage on Z-Posts.	The post is bent. The Ezy-Carriage cannot travel freely along the post due to distortion.	The post is to be replaced. The post is to be replaced.
Mechanical damage on rail.	The rail is dented, twisted or flattened. There are tears in any part of the rail. The slots in the rail are distorted.	The rail is to be replaced. The rail is to be replaced. The rail is to be replaced.
Mechanical damage on bolts.	The body of the bolt is distorted. The thread of the bolt is damaged.	The bolt is to be replaced. The bolt is to be replaced.
Disturbance of material around posts	The material around the post is loose or uncompacted.	Any disturbed pavement or material around a post shall be left dense, tight and smooth so that resistance to water penetration is similar to that of the adjacent surface.





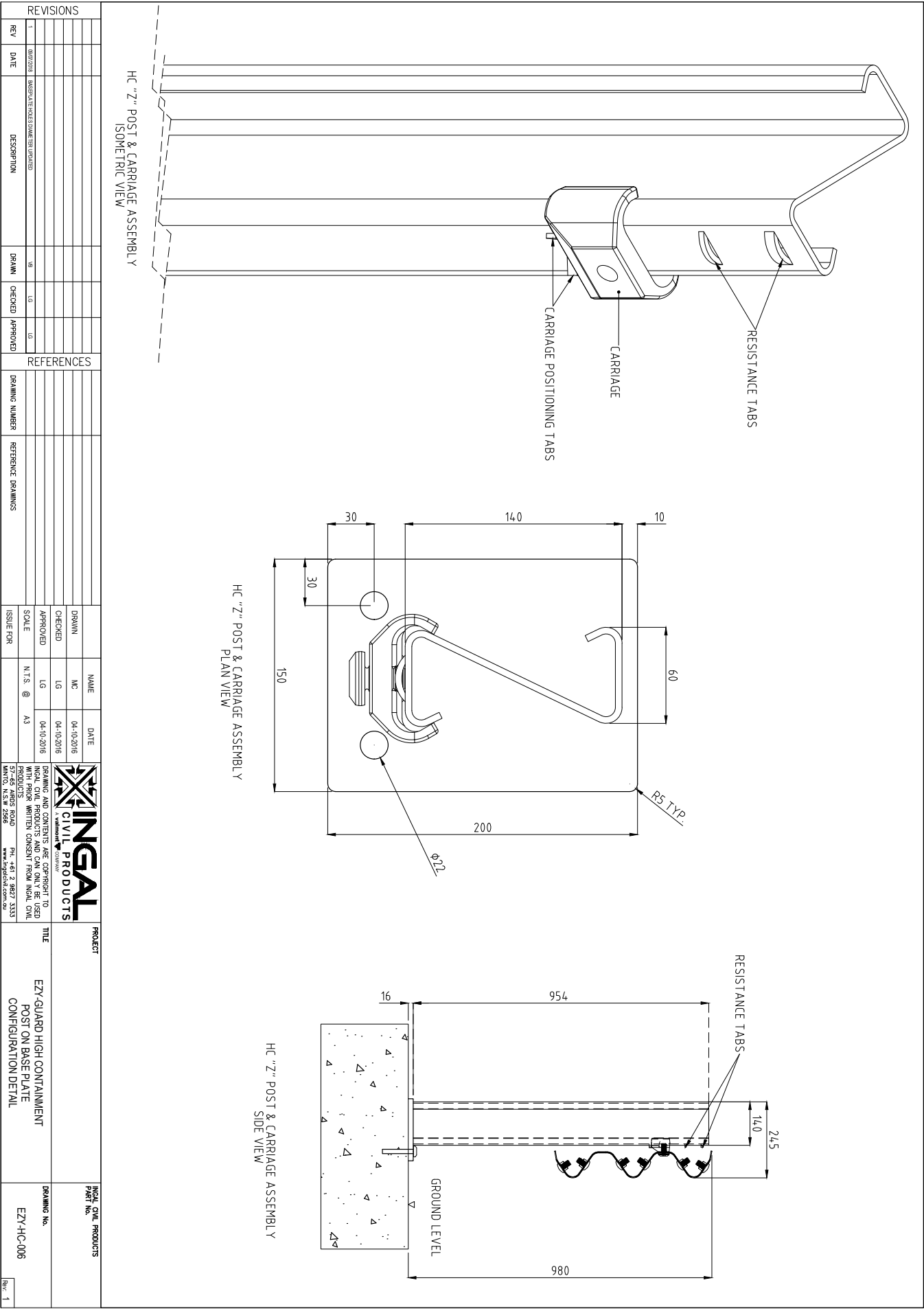


J:\SALES & MARKETING\DRAWINGS\EZY-GUARD HC\EZY-HC-010 - NZ TRANSITION ASSY.DWG



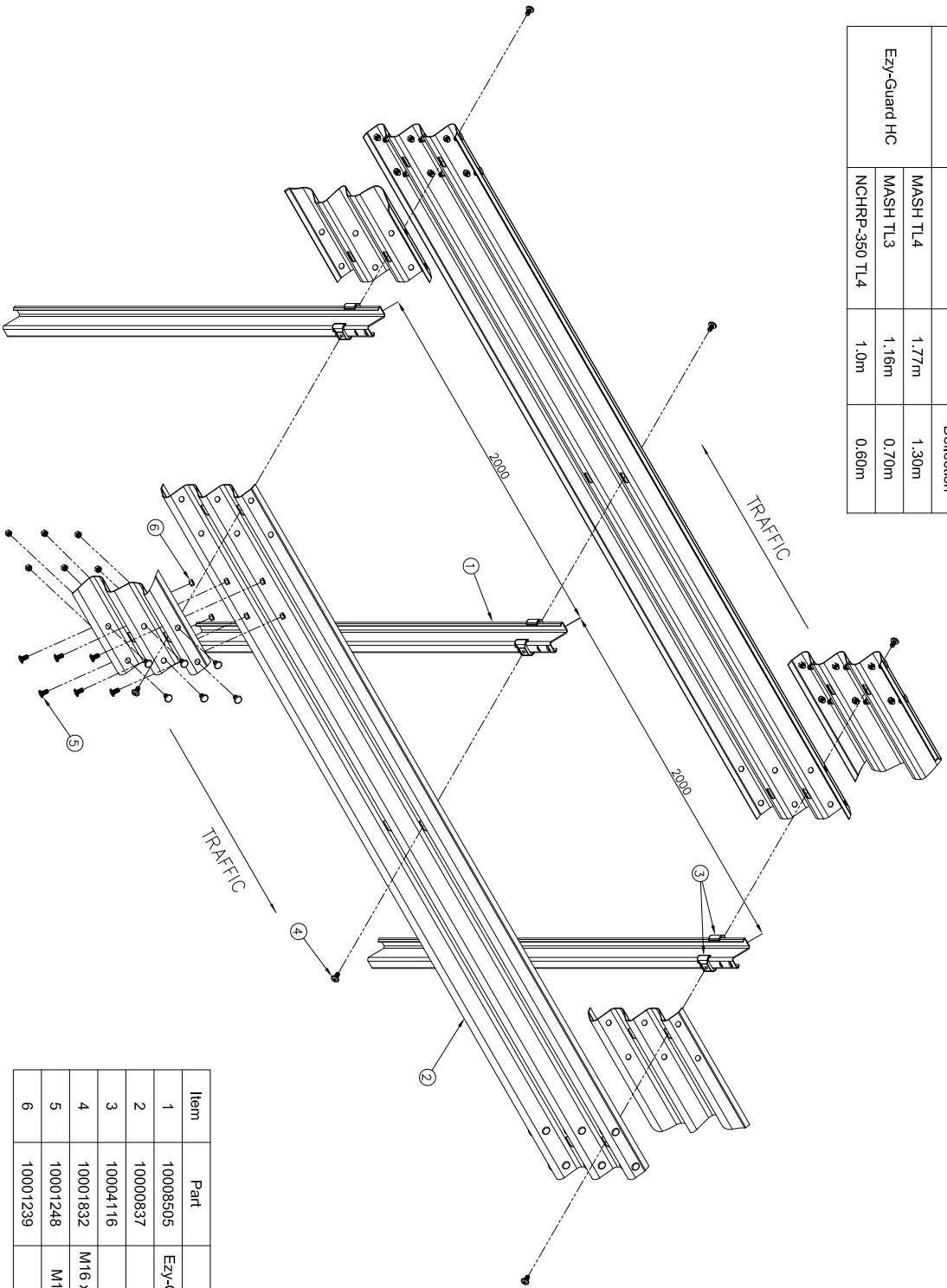
SALES & MARKETING | DRAWINGS | EZY-GUARD HC | EZY-HC-011 - NZ TRAILING TERMINAL DWG





J:\SALES & MARKETING\DRAWINGS\EZY-GUARD HCEZY-HC-006 - POST ON BPLATE CONFIGURATION.DWG

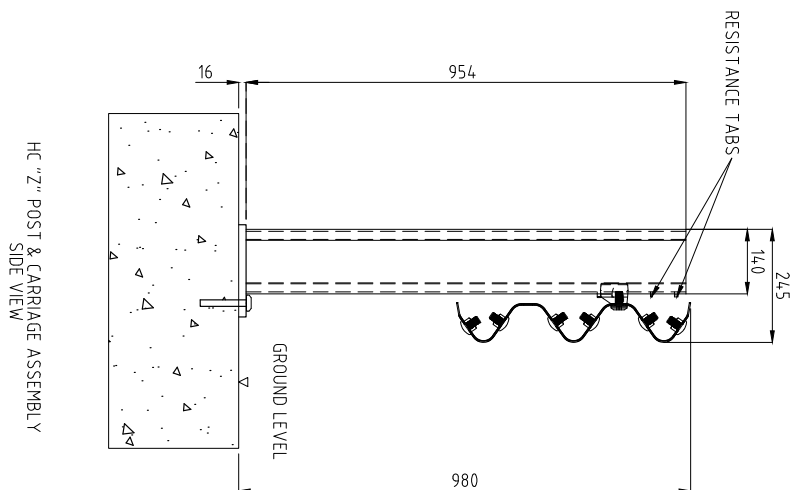
Guardrail System	Containment Level	Deflection	Permanent Deflection
Ezy-Guard HC	MASH TL4	1.77m	1.30m
	MASH TL3	1.16m	0.70m
	NCHRP-350 TL4	1.0m	0.60m



Item	Part	Description	Qty
1	10008505	Ezy-Guard HC Median Z-Post 2000mm	2
2	10000837	Thirbeam (2.7) 4000mm NLL	2
3	10004116	Heavy Duty Carriage	4
4	10001832	M16 x 30mm Ezy-Guard Smart post bolt	4
5	10001248	M16 x 32mm Splice Bolt Grade 8.8	24
6	10001239	M16 Oversized Nut	24

REVISIONS	
REV	DATE
1	10/02/2018
2	10/02/2018
3	10/02/2018
4	10/02/2018
5	10/02/2018
6	10/02/2018
7	10/02/2018
8	10/02/2018
9	10/02/2018
10	10/02/2018
11	10/02/2018
12	10/02/2018
13	10/02/2018
14	10/02/2018
15	10/02/2018
16	10/02/2018
17	10/02/2018
18	10/02/2018
19	10/02/2018
20	10/02/2018
21	10/02/2018
22	10/02/2018
23	10/02/2018
24	10/02/2018
25	10/02/2018
26	10/02/2018
27	10/02/2018
28	10/02/2018
29	10/02/2018
30	10/02/2018
31	10/02/2018
32	10/02/2018
33	10/02/2018
34	10/02/2018
35	10/02/2018
36	10/02/2018
37	10/02/2018
38	10/02/2018
39	10/02/2018
40	10/02/2018
41	10/02/2018
42	10/02/2018
43	10/02/2018
44	10/02/2018
45	10/02/2018
46	10/02/2018
47	10/02/2018
48	10/02/2018
49	10/02/2018
50	10/02/2018
51	10/02/2018
52	10/02/2018
53	10/02/2018
54	10/02/2018
55	10/02/2018
56	10/02/2018
57	10/02/2018
58	10/02/2018
59	10/02/2018
60	10/02/2018
61	10/02/2018
62	10/02/2018
63	10/02/2018
64	10/02/2018
65	10/02/2018
66	10/02/2018
67	10/02/2018
68	10/02/2018
69	10/02/2018
70	10/02/2018
71	10/02/2018
72	10/02/2018
73	10/02/2018
74	10/02/2018
75	10/02/2018
76	10/02/2018
77	10/02/2018
78	10/02/2018
79	10/02/2018
80	10/02/2018
81	10/02/2018
82	10/02/2018
83	10/02/2018
84	10/02/2018
85	10/02/2018
86	10/02/2018
87	10/02/2018
88	10/02/2018
89	10/02/2018
90	10/02/2018
91	10/02/2018
92	10/02/2018
93	10/02/2018
94	10/02/2018
95	10/02/2018
96	10/02/2018
97	10/02/2018
98	10/02/2018
99	10/02/2018
100	10/02/2018
101	10/02/2018
102	10/02/2018
103	10/02/2018
104	10/02/2018
105	10/02/2018
106	10/02/2018
107	10/02/2018
108	10/02/2018
109	10/02/2018
110	10/02/2018
111	10/02/2018
112	10/02/2018
113	10/02/2018
114	10/02/2018
115	10/02/2018
116	10/02/2018
117	10/02/2018
118	10/02/2018
119	10/02/2018
120	10/02/2018
121	10/02/2018
122	10/02/2018
123	10/02/2018
124	10/02/2018
125	10/02/2018
126	10/02/2018
127	10/02/2018
128	10/02/2018
129	10/02/2018
130	10/02/2018
131	10/02/2018
132	10/02/2018
133	10/02/2018
134	10/02/2018
135	10/02/2018
136	10/02/2018
137	10/02/2018
138	10/02/2018
139	10/02/2018
140	10/02/2018
141	10/02/2018
142	10/02/2018
143	10/02/2018
144	10/02/2018
145	10/02/2018
146	10/02/2018
147	10/02/2018
148	10/02/2018
149	10/02/2018
150	10/02/2018
151	10/02/2018
152	10/02/2018
153	10/02/2018
154	10/02/2018
155	10/02/2018
156	10/02/2018
157	10/02/2018
158	10/02/2018
159	10/02/2018
160	10/02/2018
161	10/02/2018
162	10/02/2018
163	10/02/2018
164	10/02/2018
165	10/02/2018
166	10/02/2018
167	10/02/2018
168	10/02/2018
169	10/02/2018
170	10/02/2018
171	10/02/2018
172	10/02/2018
173	10/02/2018
174	10/02/2018
175	10/02/2018
176	10/02/2018
177	10/02/2018
178	10/02/2018
179	10/02/2018
180	10/02/2018
181	10/02/2018
182	10/02/2018
183	10/02/2018
184	10/02/2018
185	10/02/2018
186	10/02/2018
187	10/02/2018
188	10/02/2018
189	10/02/2018
190	10/02/2018
191	10/02/2018
192	10/02/2018
193	10/02/2018
194	10/02/2018
195	10/02/2018
196	10/02/2018
197	10/02/2018
198	10/02/2018
199	10/02/2018
200	10/02/2018
201	10/02/2018
202	10/02/2018
203	10/02/2018
204	10/02/2018
205	10/02/2018
206	10/02/2018
207	10/02/2018
208	10/02/2018
209	10/02/2018
210	10/02/2018
211	10/02/2018
212	10/02/2018
213	10/02/2018
214	10/02/2018
215	10/02/2018
216	10/02/2018
217	10/02/2018
218	10/02/2018
219	10/02/2018
220	10/02/2018
221	10/02/2018
222	10/02/2018
223	10/02/2018
224	10/02/2018
225	10/02/2018
226	10/02/2018
227	10/02/2018
228	10/02/2018
229	10/02/2018
230	10/02/2018
231	10/02/2018
232	10/02/2018
233	10/02/2018
234	10/02/2018
235	10/02/2018
236	10/02/2018
237	10/02/2018
238	10/02/2018
239	10/02/2018
240	10/02/2018
241	10/02/2018
242	10/02/2018
243	10/02/2018
244	10/02/2018
245	10/02/2018
246	10/02/2018
247	10/02/2018
248	10/02/2018
249	10/02/2018
250	10/02/2018
251	10/02/2018
252	10/02/2018
253	10/02/2018
254	10/02/2018
255	10/02/2018
256	10/02/2018
257	10/02/2018
258	10/02/2018
259	10/02/2018
260	10/02/2018
261	10/02/2018
262	10/02/2018
263	10/02/2018
264	10/02/2018
265	10/02/2018
266	10/02/2018
267	10/02/2018
268	10/02/2018
269	10/02/2018
270	10/02/2018
271	10/02/2018
272	10/02/2018
273	10/02/2018
274	10/02/2018
275	10/02/2018
276	10/02/2018
277	10/02/2018
278	10/02/2018
279	10/02/2018
280	10/02/2018
281	10/02/2018
282	10/02/2018
283	10/02/2018
284	10/02/2018
285	10/02/2018
286	10/02/2018
287	10/02/2018
288	10/02/2018
289	10/02/2018
290	10/02/2018
291	10/02/2018
292	10/02/2018
293	10/02/2018
294	10/02/2018
295	10/02/2018
296	10/02/2018
297	10/02/2018
298	10/02/2018
299	10/02/2018
300	10/02/2018
301	10/02/2018
302	10/02/2018
303	10/02/2018
304	10/02/2018
305	10/02/2018
306	10/02/2018
307	10/02/2018
308	10/02/2018
309	10/02/2018
310	10/02/2018
311	10/02/2018
312	10/02/2018
313	10/02/2018
314	10/02/2018
315	10/02/2018
316	10/02/2018
317	10/02/2018
318	10/02/2018
319	10/02/2018
320	10/02/2018
321	10/02/2018
322	10/02/2018
323	10/02/2018
324	10/02/2018
325	10/02/2018
326	10/02/2018
327	10/02/2018
328	10/02/2018
329	10/02/2018
330	10/02/2018
331	10/02/2018
332	10/02/2018
333	10/02/2018
334	10/02/2018
335	10/02/2018
336	10/02/2018
337	10/02/2018
338	10/02/2018
339	10/02/2018
340	10/02/2018
341	10/02/2018
342	10/02/2018
343	10/02/2018
344	10/02/2018
345	10/02/2018
346	10/02/2018
347	10/02/2018
348	10/02/2018
349	10/02/2018
350	10/02/2018
351	10/02/2018
352	10/02/2018
353	10/02/2018
354	10/02/2018
355	10/02/2018
356	10/02/2018
357	10/02/2018
358	10/02/2018
359	10/02/2018
360	10/02/2018
361	10/02/2018
362	10/02/2018
363	10/02/2018
364	10/02/2018
365	10/02/2018
366	10/02/2018
367	10/02/2018
368	10/02/2018
369	10/02/2018
370	10/02/2018
371	10/02/2018
372	10/02/2018
373	10/02/2018
374	10/02/2018
375	10/02/2018
376	10/02/2018
377	10/02/2018
378	10/02/2018
379	10/02/2018
380	10/02/2018
381	10/02/2018
382	10/02/2018
383	10/02/2018
384	10/02/2018
385	10/02/2018
386	10/02/2018
387	10/02/2018
388	10/02/2018
389	10/02/2018
390	10/02/2018
391	10/02/2018
392	10/02/2018
393	10/02/2018
394	10/02/2018
395	10/02/2018
396	10/02/2018
397	10/02/2018
398	10/02/2018
399	10/02/2018
400	10/02/2018
401	10/02/2018
402	10/02/201



[illegible]



**INGAL**  
CIVIL PRODUCTS  
A valmont  COMPANY

*For more information*

contact us on the web

[www.ingalcivil.co.nz](http://www.ingalcivil.co.nz)

**Auckland**  
12 Offenhauser Drive, East Tamaki,  
Auckland 2013, New Zealand  
Ph: 09 920 838  
Email: [sales@ingalcivil.co.nz](mailto:sales@ingalcivil.co.nz)

**Christchurch**  
Ph: 0211 983 311

**Wellington**  
Ph: 021 504 870