

# ArmorBuffa™

MASH TL3 Temporary End Treatment

## *Product Manual*

Australian State Road Authority approved for use in speed zones up to 80km/h

**MASH TL2** COMPLIANT

**MASH TL3** COMPLIANT



Release 03/24

## 1.0 Introduction

The ArmorBuffa™ is a non-redirective, gating, crash cushion designed to meet the latest test standards defined in the Manual for Assessing Safety Hardware (MASH), Second Edition, 2016. The ArmorBuffa™ system utilises a Transition, water-filled Elements and a Nose Piece to absorb kinetic energy and safely contain or control the penetration trajectory of impacting vehicles.

The system is comprised of a Nose Piece, water-filled Elements, Pins, a Transition and mechanical anchors. All Elements are always filled with water.

ArmorBuffa is available in 2 configurations:

- **TL2** for speed zones up to 70km/h  
(1 yellow and 1 orange element)
- **TL3** for speed zones up to 80km/h  
(3 yellow and 1 orange element)

The system has a nominal 1100mm height, 525mm width, and an effective length of 5,316mm for TL-2 or 9,313mm for TL-3 when installed on a temporary concrete barrier or HighwayGuard steel barrier.

ArmorBuffa™ is designed to protect the end of an unanchored temporary F-Type concrete barrier and HighwayGuard steel barrier.

## 2.0 Recommended Tools

NOTE: The list of tools, safety equipment, and traffic control is a general recommendation and should not be considered a comprehensive list. Depending on the specific characteristics of the job site and the complexity of the repair or assembly, more or less tools may be necessary.

### Required Tools

- |                   |                                            |
|-------------------|--------------------------------------------|
| • Tape Measure    | • Compressed Air                           |
| • Chalk Line      | • 3/4" Diameter Brush                      |
| • Marking Paint   | • 1/2" Drive Deep Sockets<br>M16, M36      |
| • Rotary Hammer   | • Impact Wrench<br>(pneumatic or electric) |
| • Masonry Bit     | 16mm x 150mm                               |
| • Steel Drill Bit | 18mm                                       |
| • Torque Wrench   |                                            |
| • Electric Drill  |                                            |

**NOTE: Water source with a flexible hose (maximum 76mm diameter) and a minimum 1,400L capacity for the 2-element TL-2 system or 2,800L capacity is required for the 4 element TL-3 system.**

### Safety Equipment



Gloves



Hard Hat



Steel-Capped Footwear



Safety Vest



Safety Glasses



Dust Mask



Hearing Protection

### Traffic Control

- Traffic Control Equipment
- Traffic Control Plan



## 3.0 Parts Identification

### 3.1 ArmorBuffa MASH TL3 Identification and Installation



Use only Ingal Civil Products parts that are specified by Ingal Civil Products for use with the ArmorBuffa™ System. The use of unspecified parts is prohibited and could result in severe personal injury or death.

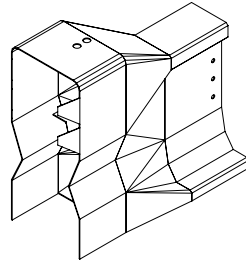
PART #	DESCRIPTION	CONCRETE KIT	HIGHWAYGUARD KIT
10200320	ArmorBuffa Transition F-Type Concrete	1	0
10200343	ArmorBuffa HighwayGuard Transition	0	1
10200322	ArmorBuffa Element - Orange	1	1
10200323	ArmorBuffa Element - Yellow	TL-3 = 3 TL-2 = 1	TL-3 = 3 TL-2 = 1
10200324	ArmorBuffa Steel Nose Assembly	1	1
10200325	ArmorBuffa Nose Cover	1	1
10200326	ArmorBuffa Cable	TL-3 = 2 TL-2 = 1	TL-3 = 2 TL-2 = 1
10200327	ArmorBuffa Nose Pin	1	1
10200328	ArmorBuffa Asymmetric Pin	1	1
10200204	ArmorZone Pin	TL-3 = 3 TL-2 = 1	TL-3 = 3 TL-2 = 1
10200329	ArmorBuffa Transition F-Type Concrete Fixing Bolt Kit	1	0
	ArmorBuffa Transition HighwayGuard Fixing Bolt Kit	0	1
10200045	ArmorBuffa MASH TL3 F-Type Concrete Kit - Complete	1	0
10200052	ArmorBuffa MASH TL2 F-Type Concrete Kit - Complete	1	0
10200046	ArmorBuffa MASH TL3 HighwayGuard Kit - Complete	0	1
10200200	Drainage Bung	1	1
10200202	Bung Spanner	1	1



## 3.0 Parts Identification (continued)



**10200320**  
ArmorBuffa Transition F-Type Concrete  
Concrete Kit: 1  
HighwayGuard Kit: 0



**10200343**  
ArmorBuffa Transition HighwayGuard  
Concrete Kit: 0  
HighwayGuard Kit: 1



**10200322**  
ArmorBuffa Element - Orange  
Concrete Kit: 1  
HighwayGuard Kit: 1



**10200323**  
ArmorBuffa Element - Yellow  
Concrete Kit: TL-3 = 3 or TL-2 = 1  
HighwayGuard Kit: TL-3 = 3 or TL-2 = 1



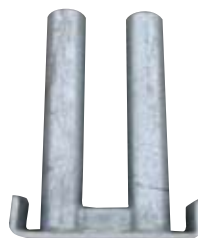
**10200324**  
ArmorBuffa Steel Nose Assembly  
Concrete Kit: 1  
HighwayGuard Kit: 1



**10200325**  
ArmorBuffa Nose Cover  
Concrete Kit: 1  
HighwayGuard Kit: 1



**10200326**  
ArmorBuffa Cable  
Concrete Kit: TL-3 = 2 or TL-2 = 1  
HighwayGuard Kit: TL-3 = 2 or TL-2 = 1



**10200327**  
ArmorBuffa Nose Pin  
Concrete Kit: 1  
HighwayGuard Kit: 1



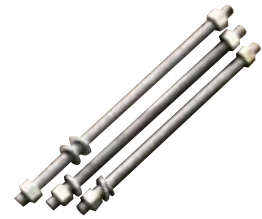
**10200328**  
ArmorBuffa Asymmetric Pin  
Concrete Kit: 1  
HighwayGuard Kit: 1



10200204  
ArmorZone Pin  
Concrete Kit: TL-3 = 3 or TL-2 = 1  
HighwayGuard Kit: TL-3 = 3 or TL-2 = 1



10200329  
ArmorBuffa Transition F-Type  
Concrete Fixing Bolt Kit  
Concrete Kit: 1  
HighwayGuard Kit: 0



ArmorBuffa Transition  
HighwayGuard Fixing Bolt Kit  
Concrete Kit: 0  
HighwayGuard Kit: 1



10200045  
ArmorBuffa MASH TL3  
F-Type Concrete Kit



10200052  
ArmorBuffa MASH TL2  
F-Type Concrete Kit



10200046  
ArmorBuffa MASH TL3  
HighwayGuard Kit



10200200  
Drainage Bung



10200202  
Bung Spanner



## 4.0 Preparation

### 4.1 Foundation

The ArmorBuffa™ system is designed to perform on a variety of foundations including concrete, asphalt, and any other surfaces capable of bearing the weight of the system.

Uneven surfaces should be flattened, and large debris removed from the foundation prior to installation.

Cross slopes of up to 8% (5° or 1:12 slope) can be accommodated with the standard hardware and the instructions provided in this manual. For slopes in excess of 8%, contact Ingal Civil Products.

### 4.2 Transition

ArmorBuffa™ is designed to accommodate a temporary F-Type concrete barrier and HighwayGuard temporary steel barrier.

Placement and installation of the ArmorBuffa™ system must be accomplished in accordance with the Austroads Design Guide and ASBAP and other state and local standards.

Before installing the ArmorBuffa™ system, ensure that all the materials required for the system are on site and have been identified.

## 5.0 Documentation

Prior to installation and assembly of the ArmorBuffa™ system, ensure you have read and understand the installation and assembly instructions. The following items should be reviewed and understood prior to installation.

- Installation and Assembly Manual (check for current revision posted at [www.ingalcivil.co.nz](http://www.ingalcivil.co.nz)).
- System Drawings (check [www.ingalcivil.co.nz](http://www.ingalcivil.co.nz) for current revision, located in installation manual).

## 6.0 Important Notes

- Sign Convention  
The term Front = At the Nose Plate  
The term Rear = At the Transition
- This manual follows installation steps for a complete ArmorBuffa™ system that is installed on site or relocated to another location.

See Step 6, Page 18 for water filling instructions.



**In regions where the water filled elements could become frozen, appropriate anti-freeze solutions should be used.**

Care should be taken to ensure that appropriate Anti-Freeze solutions are used in accordance with federal, state, and local requirements.

## 7.0 Anchoring Specifications

The ArmorBuffa™ system uses M16 x 150mm Excalibur™ Screw Bolts or equivalent for anchoring to temporary concrete barrier. 3 x M16 8.8 threaded rod is used to attach the transition to HighwayGuard barrier.



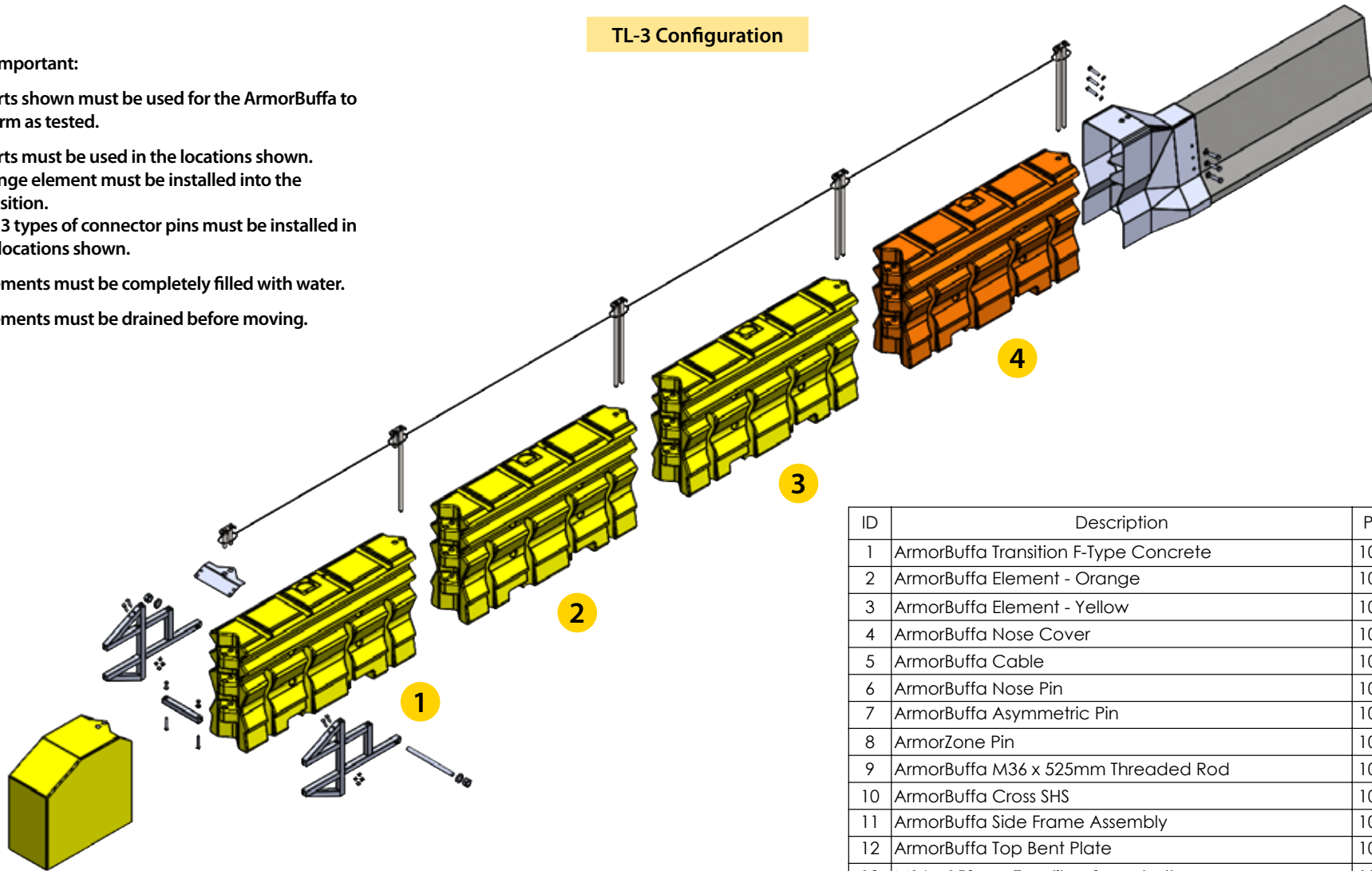
## 8.0 ArmorBuffa MASH TL-3 Exploded Assembly Overview



**Important:**

- All parts shown must be used for the ArmorBuffa to perform as tested.
- All parts must be used in the locations shown.
  - Orange element must be installed into the transition.
  - The 3 types of connector pins must be installed in the locations shown.
- All elements must be completely filled with water.
- All elements must be drained before moving.

TL-3 Configuration



ID	Description	Part No.	Qty
1	ArmorBuffa Transition F-Type Concrete	10200320	1
2	ArmorBuffa Element - Orange	10200322	1
3	ArmorBuffa Element - Yellow	10200323	3
4	ArmorBuffa Nose Cover	10200325	1
5	ArmorBuffa Cable	10200326	1
6	ArmorBuffa Nose Pin	10200327	1
7	ArmorBuffa Asymmetric Pin	10200328	1
8	ArmorZone Pin	10200204	3
9	ArmorBuffa M36 x 525mm Threaded Rod	10200337	1
10	ArmorBuffa Cross SHS	10200334	1
11	ArmorBuffa Side Frame Assembly	10200332	2
12	ArmorBuffa Top Bent Plate	10200336	1
13	M16 x 150mm Excalibur Screwbolt	10009164	6
14	M16 Structural Washer Galv	10009527	6



**Valmont Highway Technology**  
 Level 3, Building A, 11 Talavera Road  
 Macquarie Park, NSW 2113, Australia  
 T: +612 9814 1777 www.valmonthighway.com

**TOLERANCES**  
 Whole Numbers :  
 One Decimal Place :  
 Bend Angle :  
 Straightness :  
 Scale:

**CLIENT**  
**MATERIAL**  
**FINISH**

**ArmorBuffa to JJ Hooks  
 Temporary End Treatment**

**DRAWING NUMBER**  
ARMB-JJH-01

<b>DRAWN</b> VB	<b>CHECKED</b> JA	<b>APPROVED</b> LB
--------------------	----------------------	-----------------------

REV	DESCRIPTION	APPD	DATE
1	Updated BOM	JA	30/05/23

FOLDER F:\Business\_Development\Technical\_Library\Valmont\_Highway\Valmont\_Highway\Drawings\Methane Drawings (WIP-Vitor)\For Approval Letters\

Release 03/24

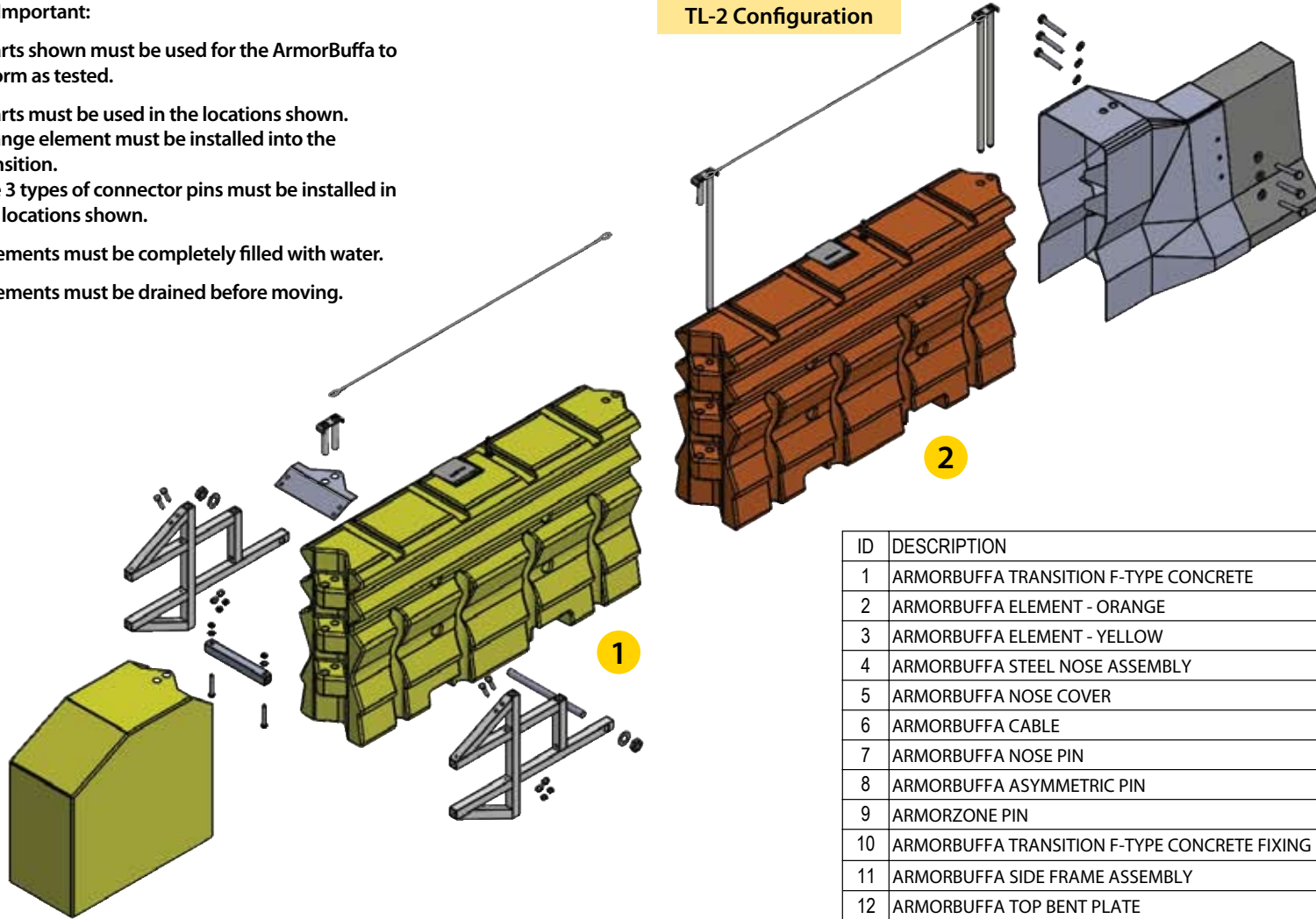
## 8.1 ArmorBuffa MASH TL-2 Exploded Assembly Overview



**Important:**

- All parts shown must be used for the ArmorBuffa to perform as tested.
- All parts must be used in the locations shown.
  - Orange element must be installed into the transition.
  - The 3 types of connector pins must be installed in the locations shown.
- All elements must be completely filled with water.
- All elements must be drained before moving.

TL-2 Configuration



ID	DESCRIPTION	PART NO.	QTY
1	ARMORBUFFA TRANSITION F-TYPE CONCRETE	10200320	1
2	ARMORBUFFA ELEMENT - ORANGE	10200322	1
3	ARMORBUFFA ELEMENT - YELLOW	10200323	1
4	ARMORBUFFA STEEL NOSE ASSEMBLY	10200324	1
5	ARMORBUFFA NOSE COVER	10200325	1
6	ARMORBUFFA CABLE	10200326	1
7	ARMORBUFFA NOSE PIN	10200327	1
8	ARMORBUFFA ASYMMETRIC PIN	10200328	1
9	ARMORZONE PIN	10200204	1
10	ARMORBUFFA TRANSITION F-TYPE CONCRETE FIXING BOLT KIT	10200329	1
11	ARMORBUFFA SIDE FRAME ASSEMBLY	10200332	2
12	ARMORBUFFA TOP BENT PLATE	10200336	1
13	M16 X 150MM EXCALIBUR SCREWBOLT	10009164	6
14	M16 STRUCTURAL WASHER GALV	10009527	6

REV	DESCRIPTION	APPD	DATE
0	ORINGINAL ISSUED - 23.10.2020		

valmont

HIGHWAY

Valmont Highway Technology

Level 3, Building A, 11 Talavera Road  
Macquarie Park, NSW 2113, Australia  
T: +612 9814 1777 www.valmonthighway.com

TOLERANCES	
Whole Numbers :	
One Decimal Place :	
Bend Angle :	
Straightness :	
Scale :	1:30

CLIENT	-
MATERIAL	NA
FINISH	-

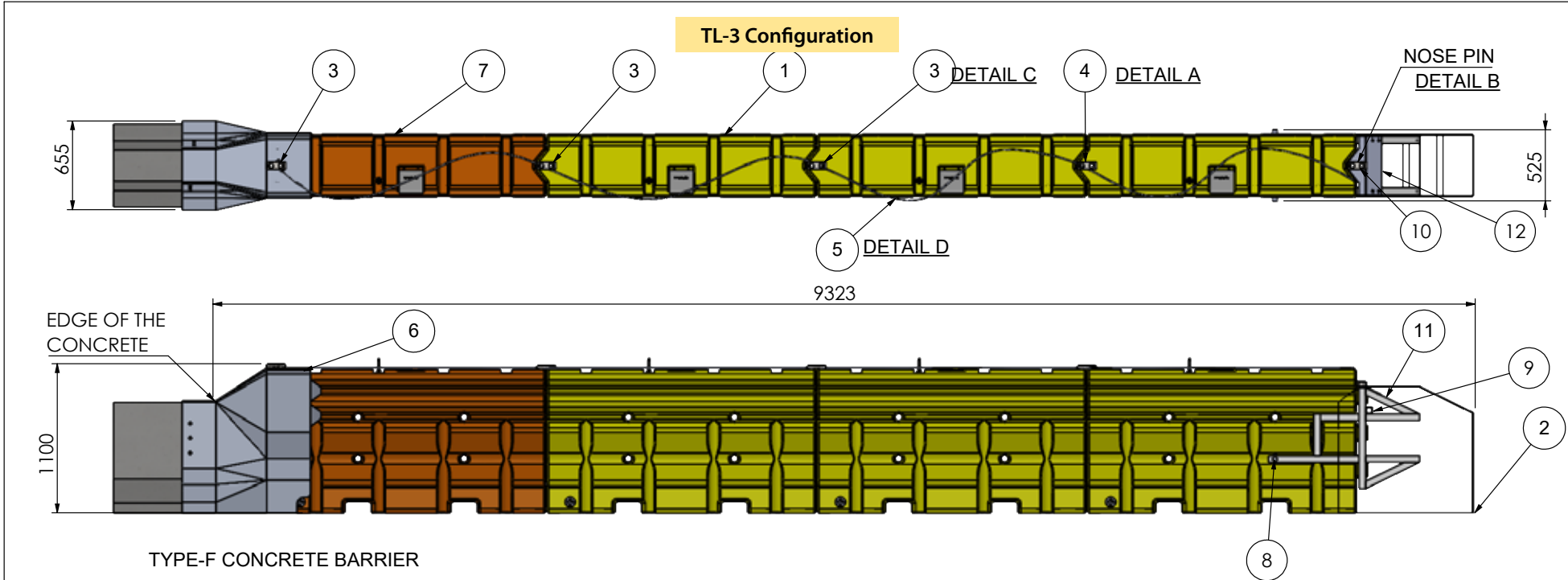
ITEM		
ARMORBUFFA MASH TL2		
DRAWING NUMBER		
DRAWN	CHECKED	APPROVED
KZ	-	-

FOLDER C:\Users\kz717943\Desktop\ArmorBuffa Drawing

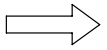
Release 03/24



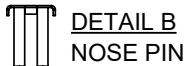
## 8.2 ArmorBuffa MASH TL-3 F-Type Concrete Kit



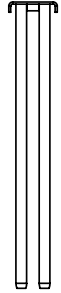
TYPE-F CONCRETE BARRIER



**DETAIL A -**  
ASYMMETRIC PIN  
ORIENTATION:  
SHORT PIN TO  
THE FRONT OF  
THE SYSTEM.



**DETAIL B**  
NOSE PIN



**DETAIL C**  
ARMORZONE  
PIN



**DETAIL D**  
ARMORBUFFA  
CABLE (4X  
SLINGS LOOPED)

ID	DESCRIPTION	PART NO.	QTY.
1	ARMORBUFFA ELEMENT - YELLOW	10200323	3
2	ARMORBUFFA NOSE COVER	10200325	1
3	ARMORZONE PIN	10200204	3
4	ARMORBUFFA ASYMMETRIC PIN	10200328	1
5	ARMORBUFFA CABLE	10200326	1
6	ARMORBUFFA TRANSITION F-TYPE CONCRETE	10200320	1
7	ARMORBUFFA ELEMENT - ORANGE	10200322	1
8	ARMORBUFFA M36 X 525MM THREADED ROD	10200337	1
9	ARMORBUFFA CROSS SHS	10200334	1
10	ARMORBUFFA NOSE PIN	10200327	1
11	ARMORBUFFA SIDE FRAME - ASSEMBLY	10200332	2
12	ARMORBUFFA TOP BENT PLATE	10200336	1

REV	DESCRIPTION	APPD	DATE
2	UPDATED CABLE QTY	JA	20-02-2023
1	UPDATED CABLE QTY AND BOM	JA	17-11-2022
0	ORINGINAL ISSUED - 23.10.2020		

**valmont**   
HIGHWAY  
Valmont Highway Technology  
Level 3, Building A, 11 Talavera Road  
Macquarie Park, NSW 2113, Australia  
T: +612 9814 1777 www.valmonthighway.com

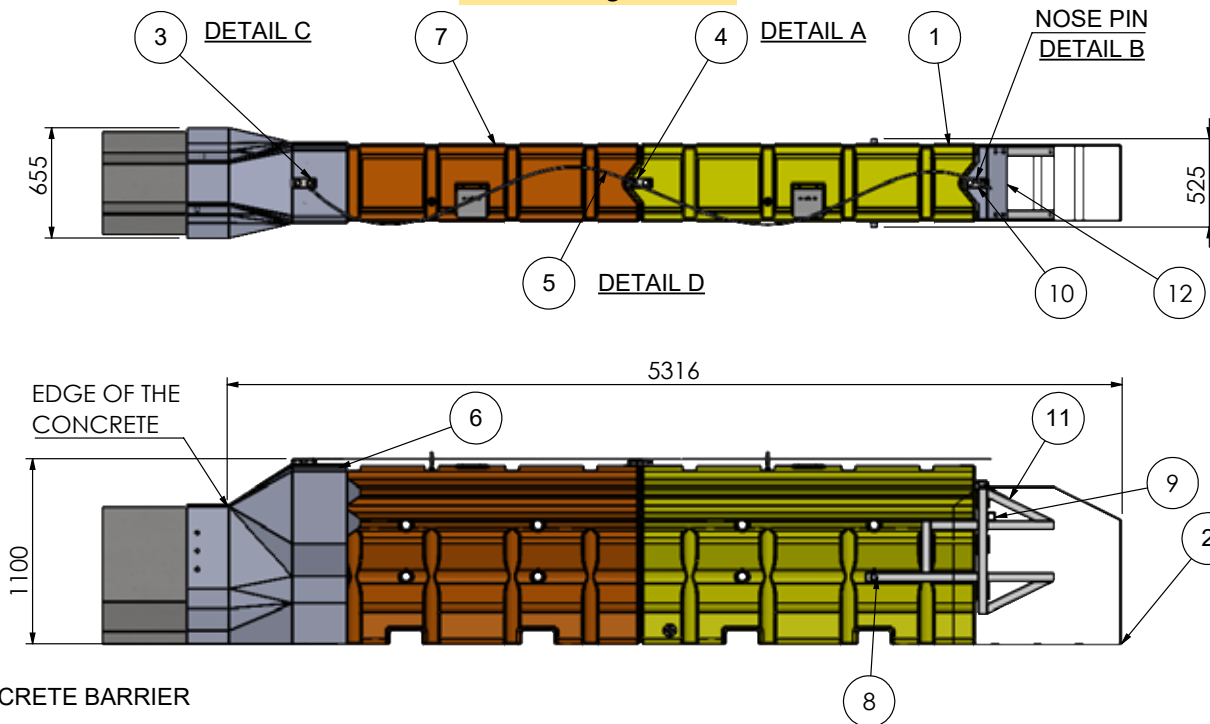
TOLERANCES	CLIENT
Whole Numbers :	-
One Decimal Place :	MATERIAL
Bend Angle :	NA
Straightness :	FINISH
Scale: 1:100	-

ITEM	ARMORBUFFA MASH TL3 F-TYPE CONCRETE KIT	
DRAWING NUMBER	10200045	
DRAWN	CHECKED	APPROVED
KZ	LG	LG

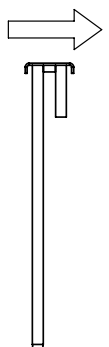
DRAWN	CHECKED	APPROVED
KZ	LG	LG

### 8.3 ArmorBuffa MASH TL-2 F-Type Concrete Kit

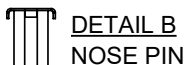
TL-2 Configuration



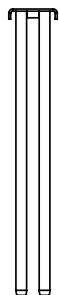
TYPE-F CONCRETE BARRIER



**DETAIL A -**  
ASYMMETRIC PIN  
ORIENTATION:  
SHORT PIN TO  
THE FRONT OF  
THE SYSTEM.



**DETAIL B**  
NOSE PIN



**DETAIL C**  
ARMORZONE  
PIN



**DETAIL D**  
ARMORBUFFA  
CABLE (2X  
SLINGS LOOPED)

ID	DESCRIPTION	PART NO.	QTY.
1	ARMORBUFFA ELEMENT - YELLOW	10200323	1
2	ARMORBUFFA NOSE COVER	10200325	1
3	ARMORZONE PIN	10200204	1
4	ARMORBUFFA ASYMMETRIC PIN	10200328	1
5	ARMORBUFFA CABLE	10200326	1
6	ARMORBUFFA TRANSITION F-TYPE CONCRETE	10200320	1
7	ARMORBUFFA ELEMENT - ORANGE	10200322	1
8	ARMORBUFFA M36 X 525MM THREADED ROD	10200337	1
9	ARMORBUFFA CROSS SHS	10200334	1
10	ARMORBUFFA NOSE PIN	10200327	1
11	ARMORBUFFA SIDE FRAME - ASSEMBLY	10200332	2
12	ARMORBUFFA TOP BENT PLATE	10200336	1

REV	DESCRIPTION	APPD	DATE
0	ORINGINAL ISSUED - 17-11-2022		

**valmont**   
HIGHWAY  
Valmont Highway Technology  
Level 3, Building A, 11 Talavera Road  
Macquarie Park, NSW 2113, Australia  
T: +612 9814 1777 www.valmonthighway.com

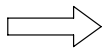
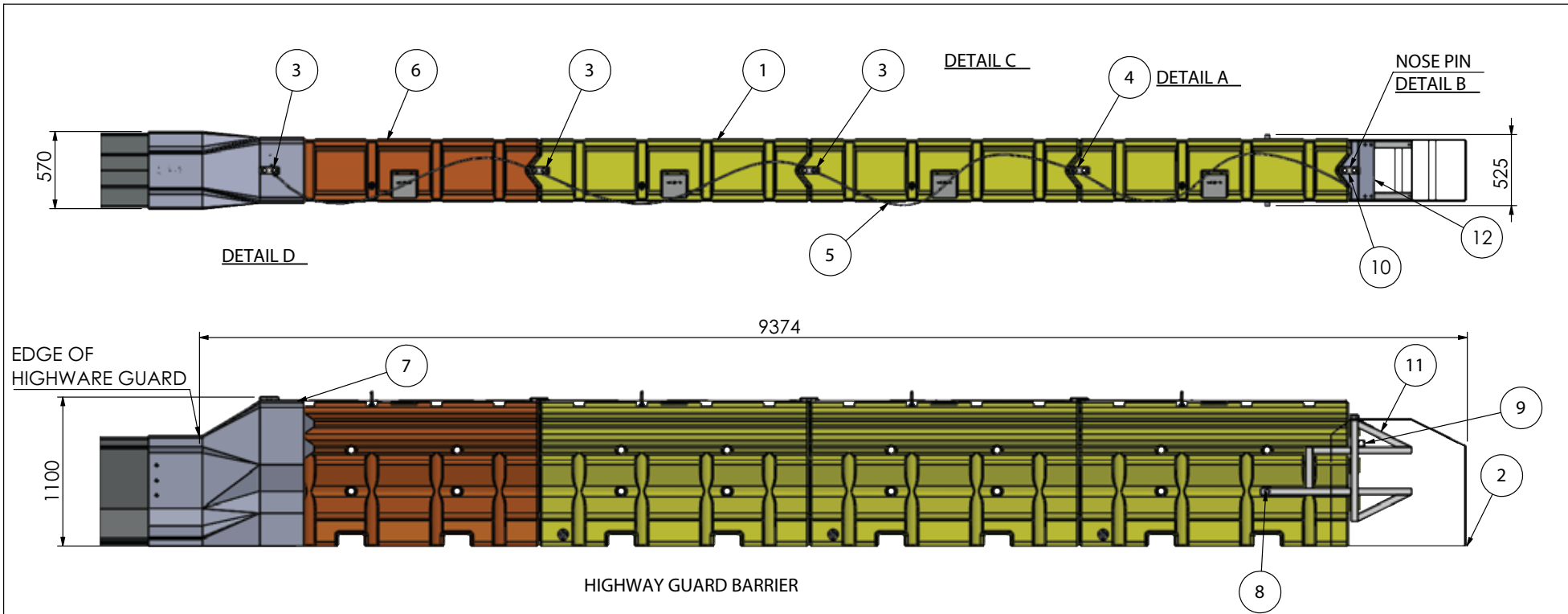
TOLERANCES  
Whole Numbers :  
One Decimal Place :  
Bend Angle :  
Straightness :  
Scale: 1:100

CLIENT : -  
MATERIAL : NA  
FINISH : -

ITEM :  
**ARMORBUFFA MASH TL2  
F-TYPE CONCRETE KIT**  
DRAWING NUMBER :  
**10200052**  
DRAWN : KZ  
CHECKED : JA  
APPROVED : JA

FOLDER F:\Engineering\3. CURRENT DRAWINGS\COMPONENT DRAWINGS\SLIDRWS\1. Solid Model\ArmorBuffa - Concrete Kit - BG800 - Highway Guard\1. Current Model\Model Files - V2

## 8.4 ArmorBuffa MASH TL-3 HighwayGuard Temporary Steel Barrier Kit



**DETAIL A -**  
ASYMMETRIC PIN  
ORIENTATION:  
SHORT PIN TO  
THE FRONT OF  
THE SYSTEM.

**DETAIL B**  
NOSE PIN

**DETAIL C**  
ARMORZONE  
PIN

**DETAIL D**  
ARMORBUFFA  
CABLE (4X  
SLINGS LOOPED)

ID	DESCRIPTION	PART NO.	QTY.
1	ARMORBUFFA ELEMENT - YELLOW	10200323	3
2	ARMORBUFFA NOSE COVER	10200325	1
3	ARMORZONE PIN	10200204	3
4	ARMORBUFFA ASYMMETRIC PIN	10200328	1
5	ARMORBUFFA CABLE	10200326	1
6	ARMORBUFFA ELEMENT - ORANGE	10200322	1
7	ARMORBUFFA TRANSITION - HIGHWAY GUARD	10200343	1
8	ARMORBUFFA M36 X 525MM THREADED ROD	10200337	1
9	ARMORBUFFA CROSS SHS	10200334	1
10	ARMORBUFFA NOSE PIN	10200327	1
11	ARMORBUFFA SIDE FRAME - ASSEMBLY	10200332	2
12	ARMORBUFFA TOP BENT PLATE	10200336	1

REV	DESCRIPTION	APPD	DATE
1	UPDATED BOM	JA	22-11-2022
0	ORINGINAL ISSUED - 23.10.2020		

**valmont**   
HIGHWAY  
**Valmont Highway Technology**  
Level 3, Building A, 11 Talavera Road  
Macquarie Park, NSW 2113, Australia  
T: +612 9814 1777 www.valmonthighway.com

TOLERANCES  
Whole Numbers :  
One Decimal Place :  
Bend Angle :  
Straightness :  
Scale: 1:100

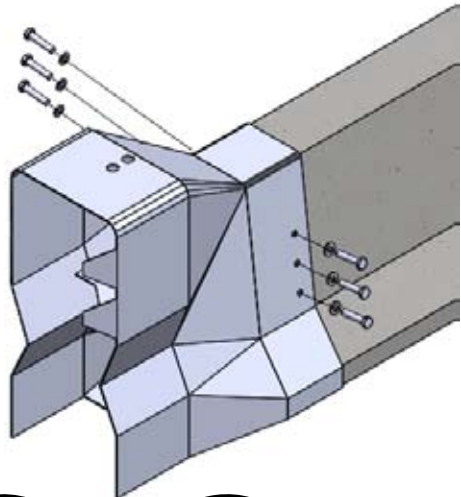
CLIENT  
-  
MATERIAL  
NA  
FINISH  
-

ITEM		
<b>ARMORBUFFA MASH HIGHWAY GUARD KIT</b>		
DRAWING NUMBER		
<b>10200047</b>		
DRAWN KZ	CHECKED LG	APPROVED LG

F:\DEFA\Engineering\3. CURRENT DRAWINGS\COMPONENT DRAWINGS\SLDDRWs\Solid Model\ArmorBuffa - Concrete kit - BG800 - Highway Guard\1\_Current Model\Model Fil

## 9.0 INSTALLATION PROCEDURE

### STEP 1A Transition Fixing to Concrete F-Type



Dust Mask



Safety Glasses



Gloves



Hearing Protection

### INSTRUCTIONS

1. Slide transition over the end of the temporary concrete barrier, ensuring it is pushed on as far as possible flush up against the end of the barrier. Then mark the location of the 6 holes.
2. Remove the transition and drill 6 x 16mmx150mm holes as marked. If a hole cannot be drilled due to encountering rebar, then the use of 2 screw bolts per side is permitted.
3. Slide the transition back into place and then screw in the 2 or 3 Excalibur™ bolts per side, firmly fastening the transition to the barrier.

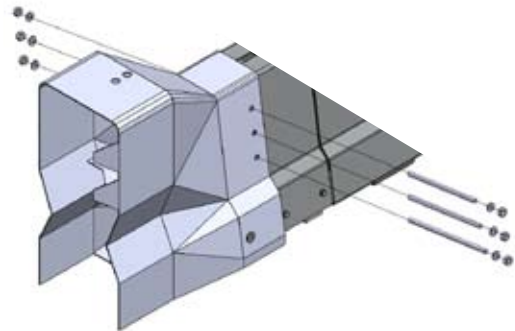


Wear proper PPE when clearing debris. This operation produces concrete dust.



## STEP 1B

## Transition Fixing to HighwayGuard

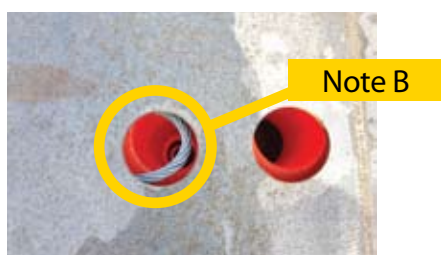
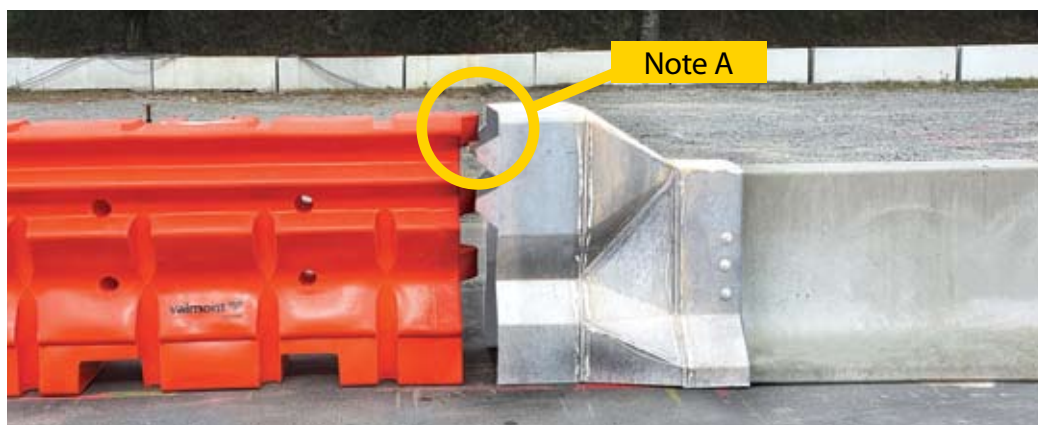


### INSTRUCTIONS

1. Slide HighwayGuard transition over the anchored HighwayGuard terminal end.
2. Mark the location of the 6 fixing holes on the HighwayGuard (3 on either side), then remove the transition.
3. Drill 6 x 18mm holes into the HighwayGuard barrier as marked.
4. Slide the HighwayGuard transition onto the end of the HighwayGuard barrier and insert the M16 threaded rod through each hole, add nuts and washers as shown.
5. Tighten the 6 nuts to 36.9 ft-lbf (50Nm).

## STEP 2

## Attachment to ArmorBuffa Elements

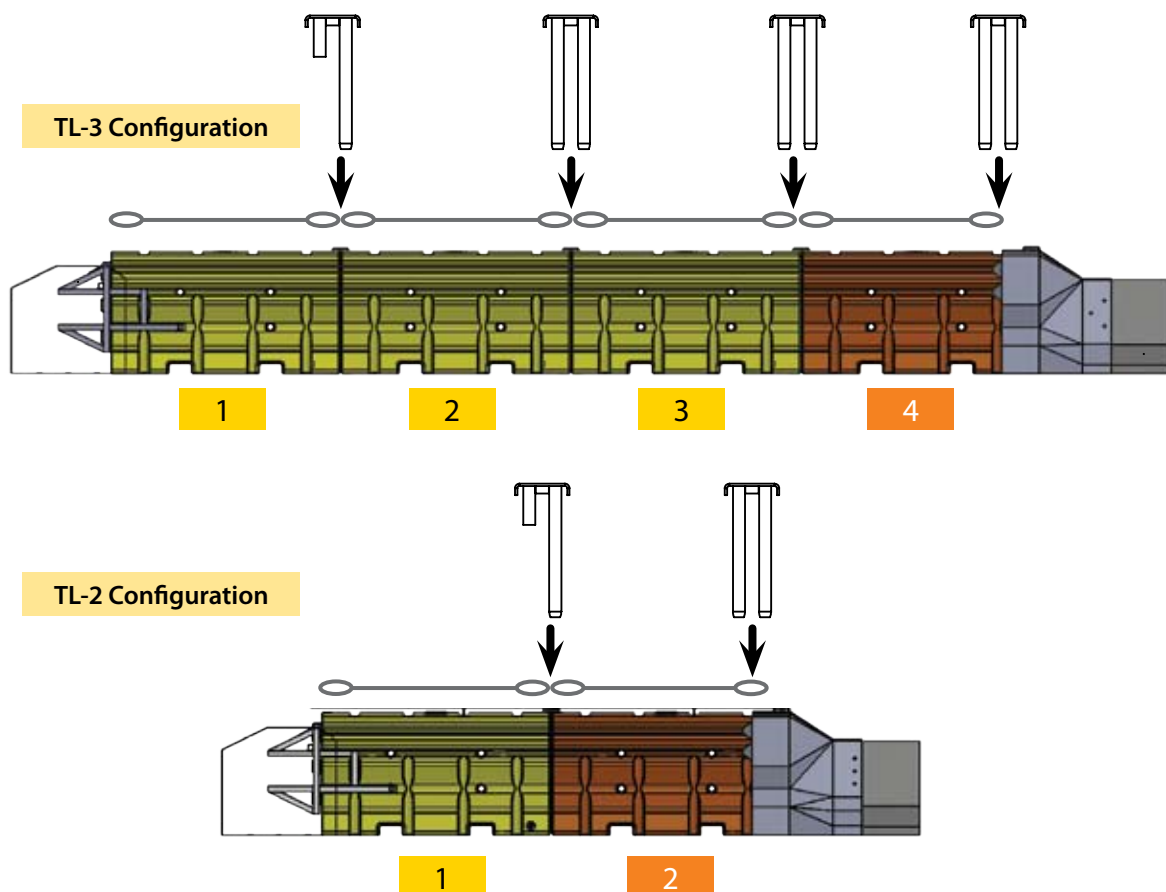


### INSTRUCTIONS

1. Check the drain bung is tight so it will not leak.
2. Slide the orange element into the transition ensuring the element is orientated as shown in Note A with the element end with the highest connector lug inserted.
3. Insert standard twin pin into the transition holes, coupling the orange element and steel cable together, as shown in Note B.
4. Slide the 3 yellow elements into position.

## STEP 3

## Adding ArmorBuffa Elements



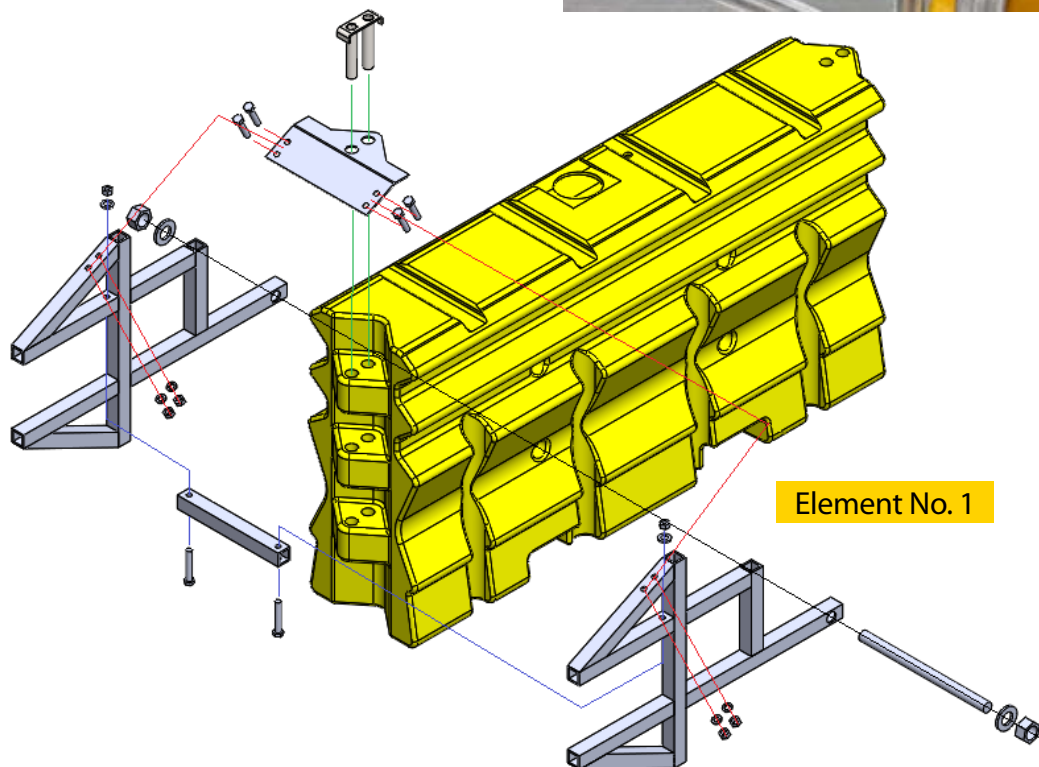
### INSTRUCTIONS

1. Pin the 3 yellow elements (for TL-3 configuration, or 1 yellow element for TL-2 configuration) with the pins as shown, engaging the steel cable.
2. The asymmetric pin must be used to connect the yellow elements 1 and 2.



## STEP 4

## ArmorBuffa Nose Plate Assembly



### INSTRUCTIONS

1. Bolt the steel nose onto the exposed end of yellow element No. 1, as shown above.
2. Tighten nuts and bolts to 50Nm.



## STEP 5

## ArmorBuffa Steel Nose Assembly

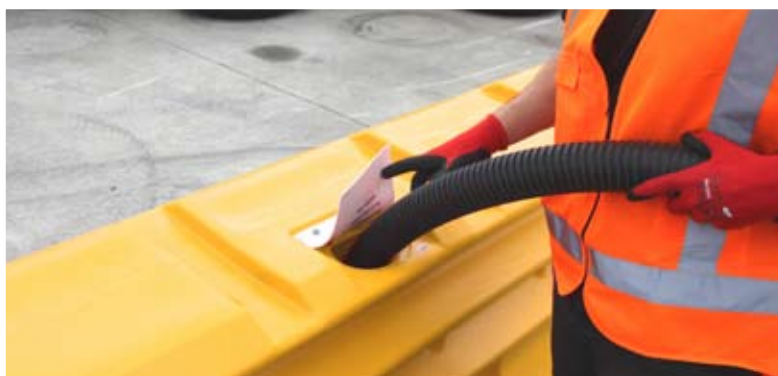


### INSTRUCTIONS

1. Fit the cable through the nose pin as shown in Note A.
2. Slide the yellow plastic nose cover into position and insert the nose pin through the nose cover into the steel nose assembly as shown in Note B. Ensuring the pin engages the cable loop.

## STEP 6

## Final Inspection and Filling of Elements

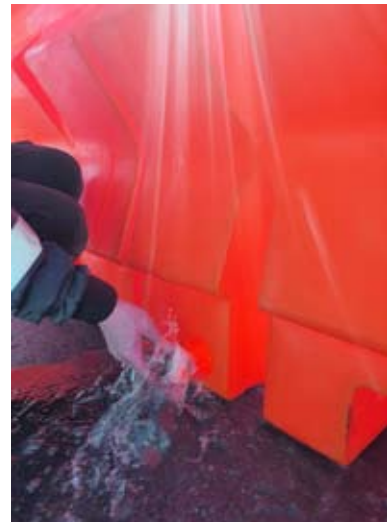


### INSTRUCTIONS

1. Inspect installed system ensuring the correct pins are in the correct locations and that the steel cable is engaged through each pin.
- 2.
3. Ensure the Water Fill Level Indicators are raised above the top of the element, indicating the element is full of water.
4. Check there are no leaks in the elements or around the drain bungs.

## STEP 7

## Disassembly and Relocation



### INSTRUCTIONS

1. Drain elements by removing the bungs and then disassemble in the reverse order of assembly.



**Do not stack full elements! Do not lift or move full elements!**

Note: The transition can be left on the end of the temporary barrier for transportation and relocation, as can the steel nose assembly be left on the plastic Element No. 1.



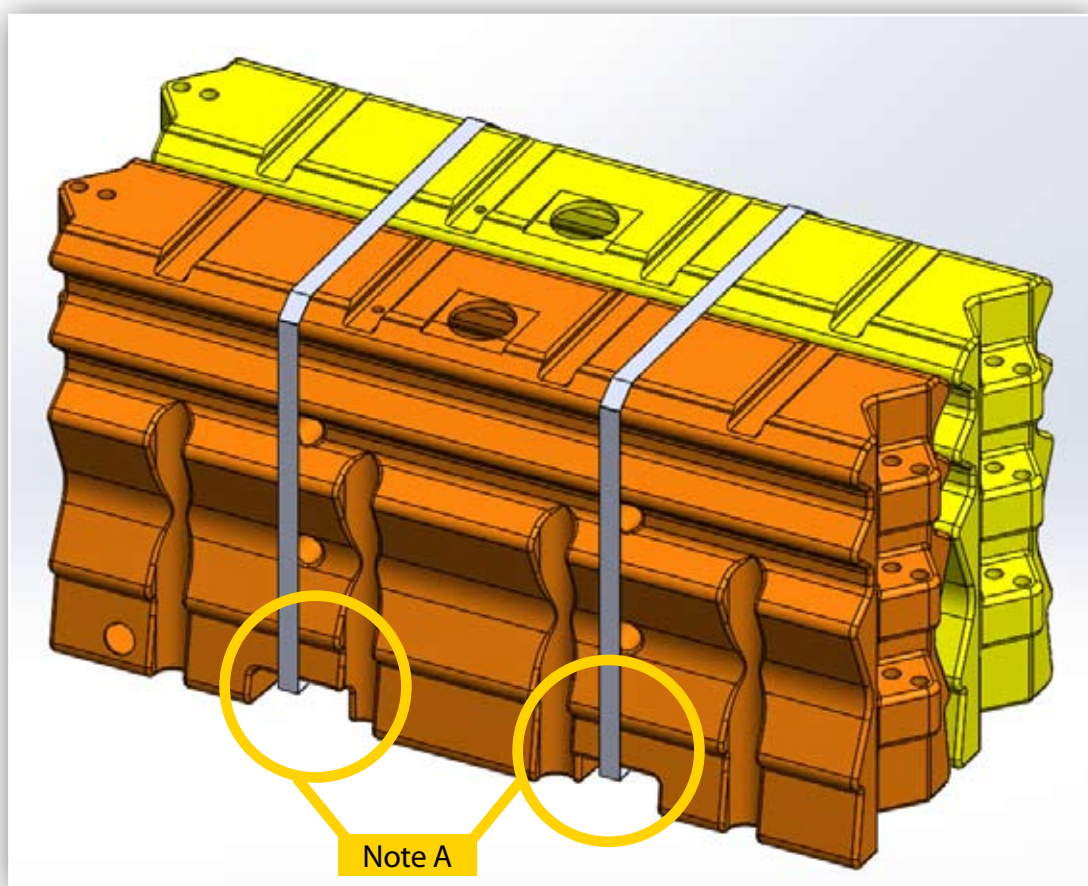
## 10.0 ArmorBuffa Element Capacity

Liquid Capacity L
700 Litres

## 11.0 Transportation and Storage

When empty, Elements are designed to be transported and stored in strapped bundles of 2, as shown below, and can be lifted via the forklift pockets shown in Note A.

The Transition Piece, Steel Nose Assembly and Nose Cover are to be strapped to pallets for transportation.



**WARNING:** Elements must be emptied before being moved or transported.



## 12.0 Inspector Checklist

Confirm all items in the checklist have been properly completed and hardware installed properly.

### Installation Checklist

Item	Date	Initial
Nose Piece is firmly attached to Element No. 1.		
The cable assembly is linked through each of the five (5) connector pins for TL3 configuration, or three (3) connector pins for TL2 configuration.		
All Elements and Nose Cover are connected with the correct pin (refer to diagrams on pages 7 thru 11).		
Concrete transition is secured to the Transition Barrier with two or three (2 or 3) M16 Anchors on each side, or for HighwayGuard three (3) M16 threaded rods.		
All Element(s) full of water and the Water Fill Level Indicators are raised above the top of the element.		
Plug at drain ports fully seated and secure with no sign of leakage.		

Inspector signature: \_\_\_\_\_

Date: \_\_\_\_\_

## 13.0 Maintenance Inspection

Crash cushions, like all roadside safety hardware, require inspection to ensure they are in acceptable working condition. Regular inspections of the ArmorBuffa™ system is recommended and shall be made by the local highway authority. Frequency of the inspections shall be made based on site conditions, traffic volumes, and crash history. The water level in all elements must be checked regularly. This can be done by checking that the Water Fill Level Indicators are raised above the top of the elements. Please follow the Local guidelines for frequency of inspections to ensure adequate repairs are made to the system. Walk-up inspections are recommended at least twice a year.

## 14.0 Walk-Up Inspections

### Recommended Frequency – Twice a Year

Before performing walk-up inspections, ensure traffic control is deployed in accordance with local guidelines.

Check for:

- Water level is within 25mm of the top of the Element's fill ports (verified by the Water Fill Level Indicators being raised above the top of the elements).
- Damage caused by vehicle impacts
- Damage caused by impacts from roadside maintenance equipment
- Misalignment
- Missing components
- Vandalism
- Clear and dispose of any debris in and around the system

After inspection is complete, ensure all items identified during the inspection process are corrected. The ArmorBuffa™ system shall be returned to proper condition as outlined in the installation instructions.

### Walk-Up Inspection

Item	Comment
Water level is within 25mm of the top (check the Water Fill Level Indicators are raised above the top of the element).	
Damage caused by vehicle impacts	
Minor damage caused by impacts from roadside maintenance equipment	
Misalignment	
Missing components	
Vandalism	
Clear and dispose of any debris in and around the system	
Grading around system	
Fill Lids are fully seated. (Step 6, Page 16)	

Inspector Signature: \_\_\_\_\_ Date: \_\_\_\_\_

Print Name: \_\_\_\_\_ Location: \_\_\_\_\_

## 15.0 Design Life

The design life of the ArmorBuffa MASH TL2/TL3 End Treatment is 20 years. This is based on the properties and performance of the UV stabilised HDPE and MDPE plastic and also the hot dip galvanizing of the connector pins, steel transition and steel nose assembly. Please note each plastic element has a unique serial number to enable manufacturing traceability.

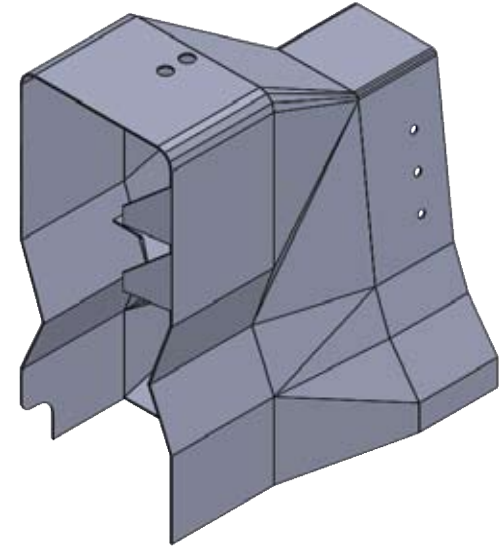
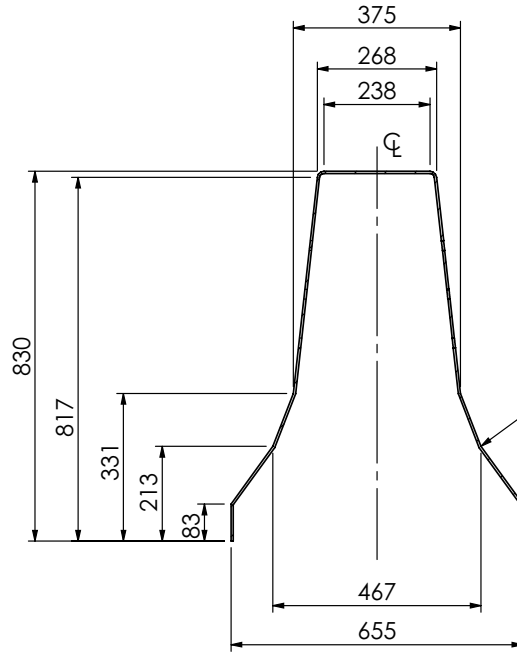
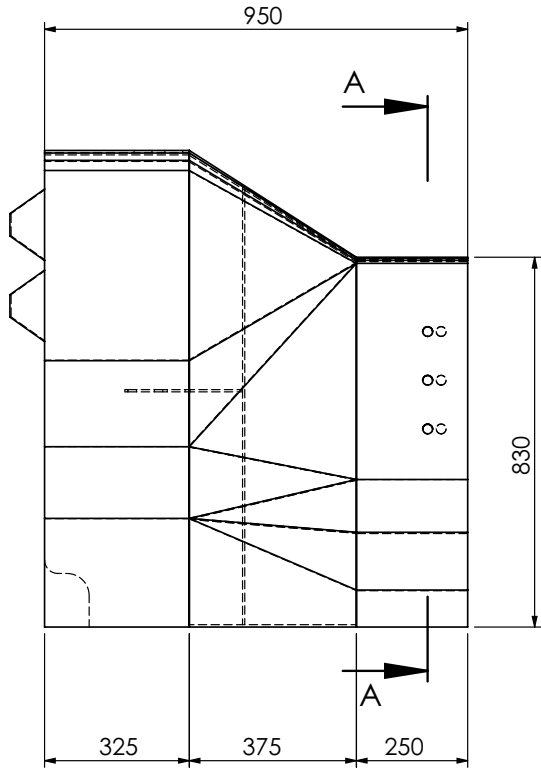
## 16.0 Maintenance

ArmorBuffa™ MASH TL2/TL3 is a maintenance free system but it is recommended that inspections are carried out periodically to ensure that the system is installed as required.

Over a long period of time in extreme conditions it may be possible for evaporation to take place and it is imperative that all the elements remain filled to the correct level.

## 17.0 Recycling

The ArmorBuffa™ MASH TL2/TL3 End Treatment is manufactured from UV stabilised HDPE and MDPE and therefore the material in any units damaged beyond repair can be recycled. The connector pins, nosepiece and transition are manufactured from steel and can also be recycled.



SECTION A-A

REV	DESCRIPTION	APPD	DATE
0	ORINGINAL ISSUED - 01.02-2023		



HIGHWAY

Valmont Highway Technology

Level 3, Building A, 11 Talavera Road  
Macquarie Park, NSW 2113, Australia

T: +612 9814 1777 www.valmonthighway.com

TOLERANCES

Whole Numbers :

One Decimal Place :

Bend Angle :

Straightness :

Scale: 1:15

CLIENT

MATERIAL

5mm BMT G250

FINISH

ITEM

ARMORBUFFA TRANSITION  
F-TYPE CONCRETE

DRAWING NUMBER

10200320

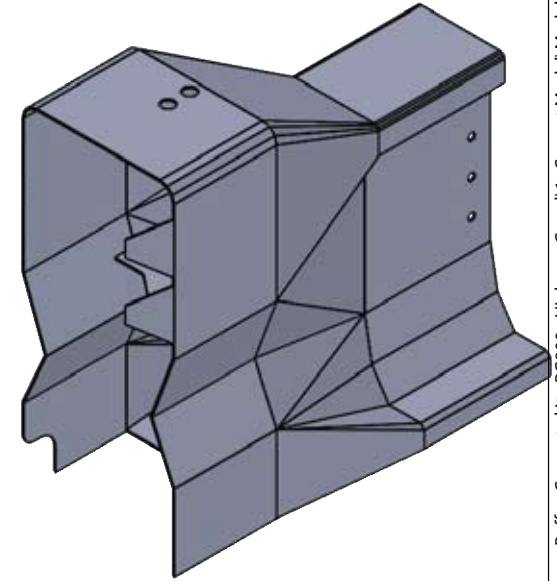
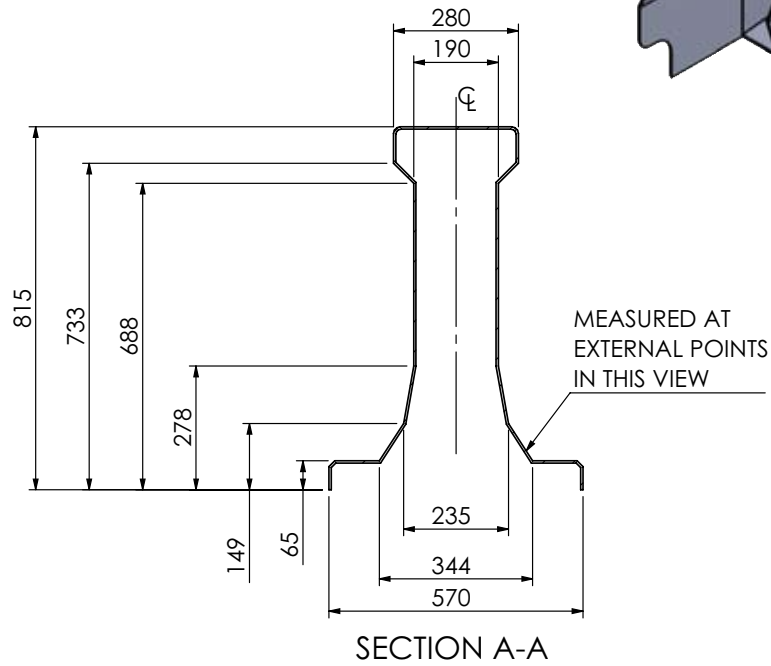
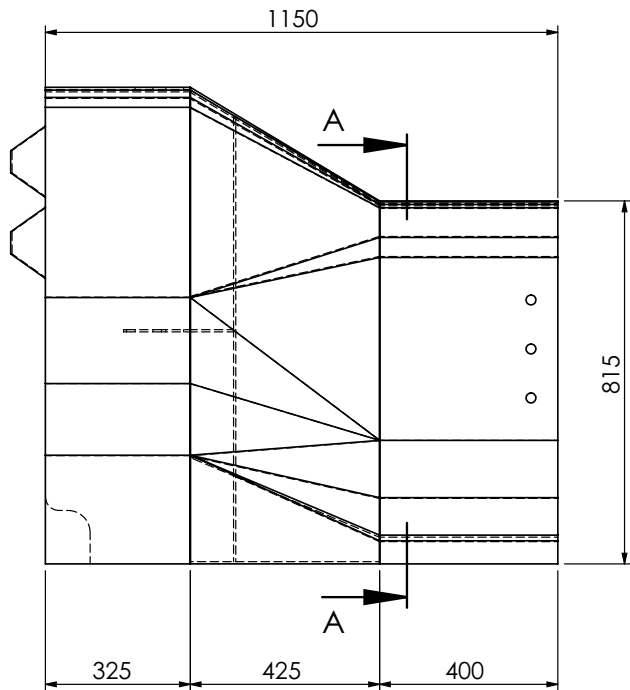
DRAWN  
KZ

CHECKED  
JA

APPROVED  
JA

FOLDEF:\Engineering\3. CURRENT DRAWINGS\COMPONENT DRAWINGS\SLDDRWs\\_Solid Model\ArmorBuffa - Concrete kit - BG800 - Highway Guard\1\_ Current Model\Model File





REV	DESCRIPTION	APPD	DATE
0	ORINGINAL ISSUED - 01.02.2023		

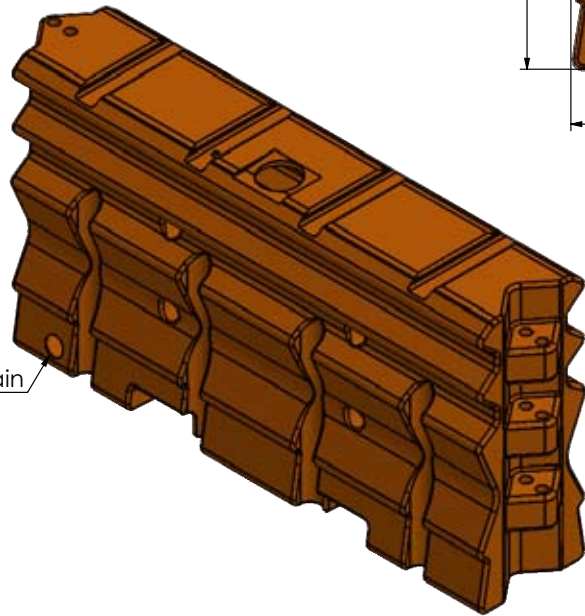
**valmont**   
**HIGHWAY**  
**Valmont Highway Technology**  
 Level 3, Building A, 11 Talavera Road  
 Macquarie Park, NSW 2113, Australia  
 T: +612 9814 1777 www.valmonthighway.com

TOLERANCES  
 Whole Numbers :  
 One Decimal Place :  
 Bend Angle :  
 Straightness :  
 Scale: 1:15

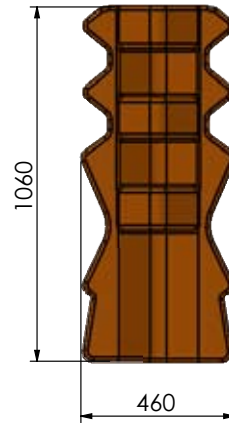
CLIENT  
 MATERIAL  
**5mm BMT G250**  
 FINISH  
**HDGALV**

ITEM  
**ARMORBUFFA TRANSITION  
 - HIGHWAY GUARD**  
 DRAWING NUMBER  
**10200343**  
 DRAWN  
**KZ**  
 CHECKED  
**JA**  
 APPROVED  
**JA**

FOLDEF:\Engineering\3. CURRENT DRAWINGS\COMPONENT DRAWINGS\SLDDRWs\\_Solid Model\ArmorBuffa - Concrete kit - BG800 - Highway Guard\1\_ Current Model\Model File



Bung Drain



**Notes:**

1. Weight = 63kg (empty)  
= 763kg (full)
2. Water per unit = 700 litres

REV	DESCRIPTION	APPD	DATE
1	Notes added, bung drain added.	JA	02/11/20

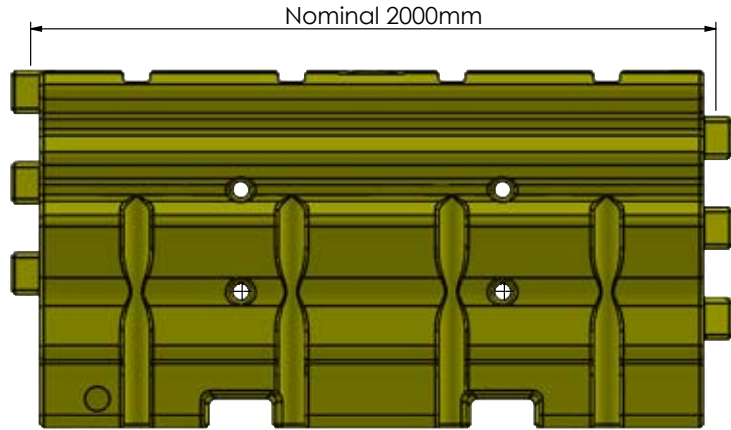
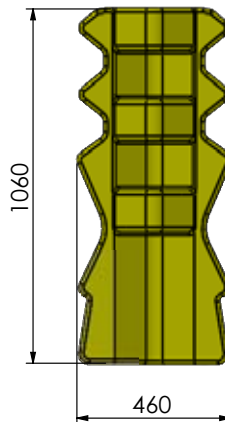
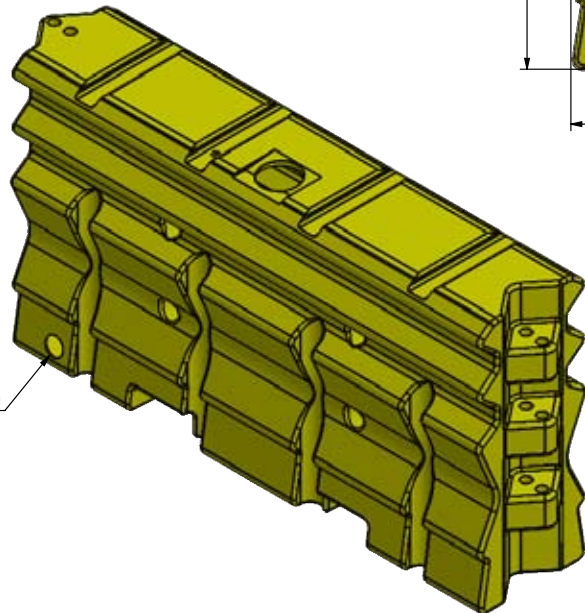
**valmont**   
 HIGHWAY  
 Valmont Highway Technology  
 Level 3, Building A, 11 Talavera Road  
 Macquarie Park, NSW 2113, Australia  
 T: +612 9814 1777 www.valmonthighway.com

TOLERANCES
Whole Numbers :
One Decimal Place :
Bend Angle :
Straightness :
Scale:

CLIENT
MATERIAL
FINISH

ITEM	ArmorBuffa Element Orange		
DRAWING NUMBER	10200322		
DRAWN	CHECKED	APPROVED	
VB	JA	LB	

FOLDER F:\Engineering\3 - CURRENT DRAWINGS\COMPONENT DRAWINGS\SLDDRWs\10200322 - ArmorBuffa Element - Orange\



- Notes:**
1. Weight = 50kg (empty)  
= 750kg (full)
  2. Water per unit = 700 litres

REV	DESCRIPTION	APPD	DATE
1	Notes updated, bung drain added.	JA	02/11/20

**valmont**   
 HIGHWAY  
 Valmont Highway Technology  
 Level 3, Building A, 11 Talavera Road  
 Macquarie Park, NSW 2113, Australia  
 T: +612 9814 1777 www.valmonthighway.com

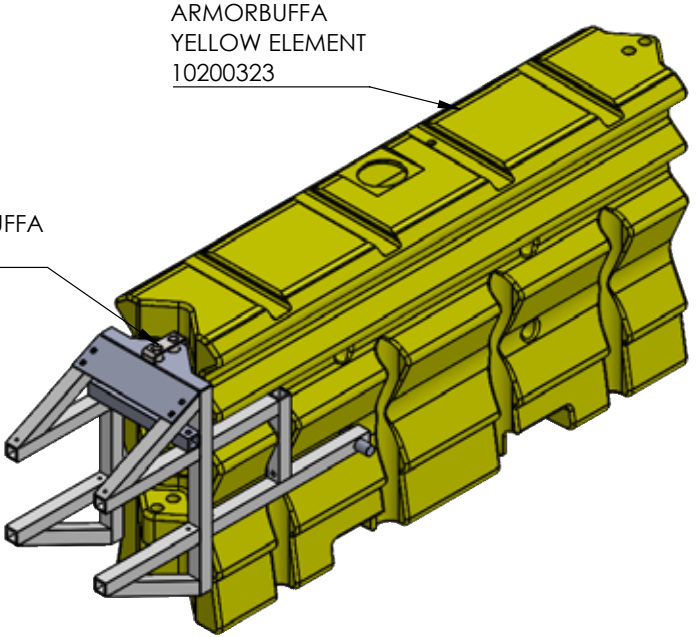
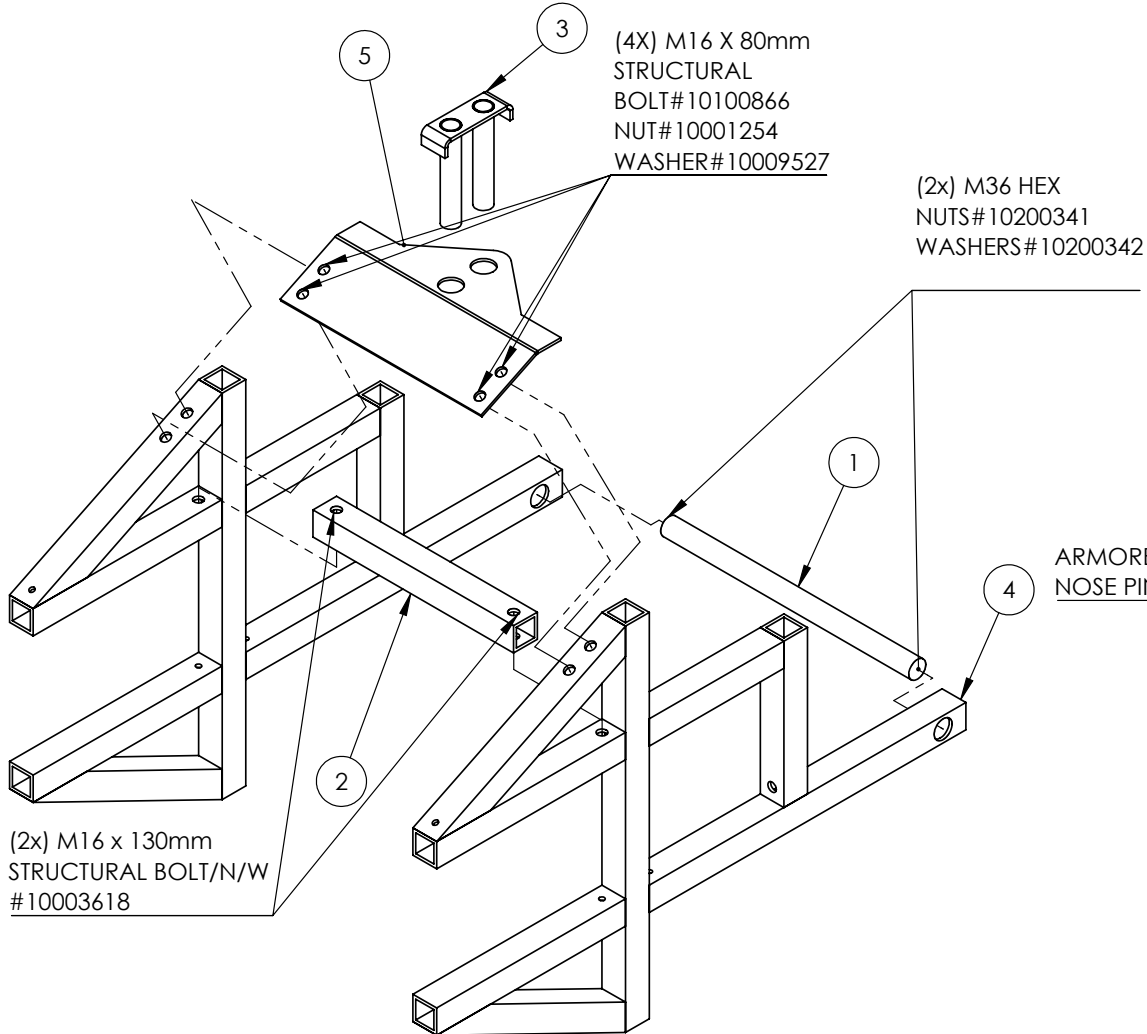
TOLERANCES  
 Whole Numbers :  
 One Decimal Place :  
 Bend Angle :  
 Straightness :  
 Scale:

CLIENT  
 MATERIAL  
 FINISH

ITEM	ArmorBuffa Element Yellow		
DRAWING NUMBER	10200323		
DRAWN	CHECKED	APPROVED	
VB	JA	LB	

FOLDER F:\Engineering\3 - CURRENT DRAWINGS\COMPONENT DRAWINGS\SLDDRWs\10200323 - ArmorBuffa Element - Yellow

ID	Description	Part No.	QTY.
1	Armorbuffa M36 X 525MM THREADED ROD	10200337	1
2	ARMORBUFFA CROSS SHS	10200334	1
3	ARMORBUFFA NOSE PIN	10200327	1
4	Armorbuffa side frame - assembly	10200332	2
5	ArmorBuffa Top Bent Plate	10200336	1



REV	DESCRIPTION	APPD	DATE
0	ORINGINAL ISSUED		

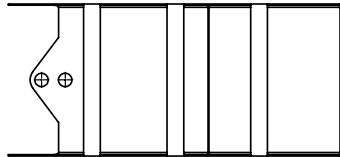
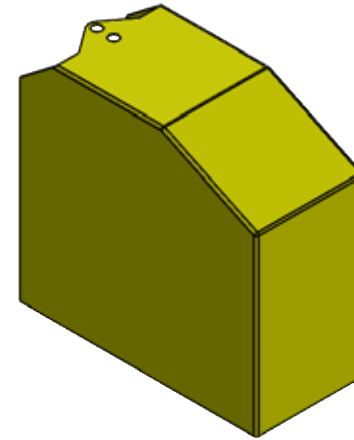
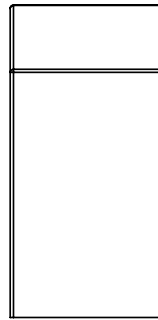
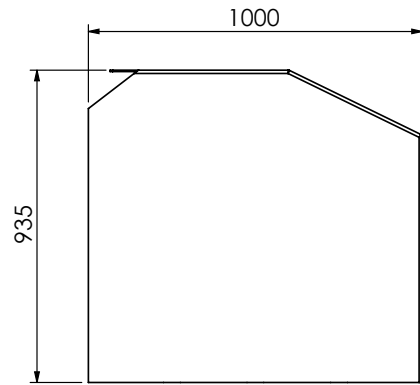
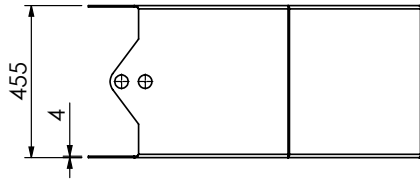
**valmont**   
HIGHWAY  
Valmont Highway Technology  
Level 3, Building A, 11 Talavera Road  
Macquarie Park, NSW 2113, Australia  
T: +612 9814 1777 www.valmonthighway.com

TOLERANCES  
Whole Numbers :  
One Decimal Place :  
Bend Angle :  
Straightness :  
Scale: 1:20

CLIENT  
MATERIAL  
NA  
FINISH  
HDGALV

ITEM  
**ARMORBUFFA STEEL NOSE ASSEMBLY**  
DRAWING NUMBER  
**10200324**  
DRAWN  
KZ  
CHECKED  
LG  
APPROVED  
LG

FOLDER F:\Engineering\3. CURRENT DRAWINGS\COMPONENT DRAWINGS\SLDDRWs\Solid Model\ArmorBuffa - Concrete kit - B6800 - Highway GuardV1\_Current Model\Model Files - VZ



**Valmont Highway Technology**  
 Level 3, Building A, 11 Talavera Road  
 Macquarie Park, NSW 2113, Australia  
 T: +612 9814 1777 www.valmonthighway.com

**TOLERANCES**  
 Whole Numbers :  
 One Decimal Place :  
 Bend Angle :  
 Straightness :  
 Scale:

**CLIENT**  
**MATERIAL**  
**FINISH**

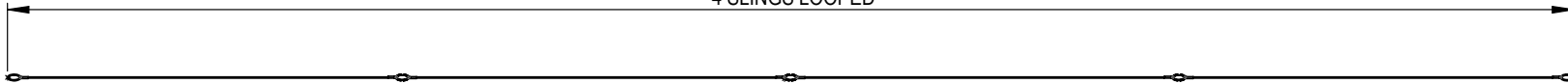
**ITEM**  
 ArmorBuffa Nose Cover  
**DRAWING NUMBER**  
 10200325  
**DRAWN** VB **CHECKED** JA **APPROVED** LB

REV	DESCRIPTION	APPD	DATE
	ORIGINAL ISSUE - 23.10.2020		

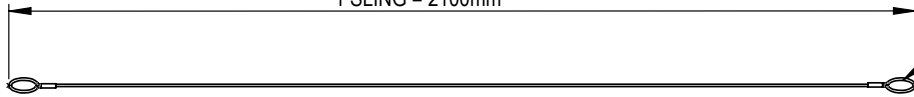
FOLDER F:\Engineering\3. CURRENT DRAWINGS\COMPONENT DRAWINGS\SLDDRWs\10200325 - ArmorBuffa Nose Cover\

KIT: 10200326

4 SLINGS LOOPED




1 SLING = 2100mm

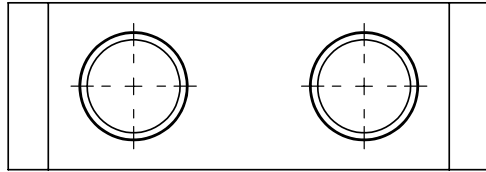


EYE TO SUIT  
Ø 35mm PIN

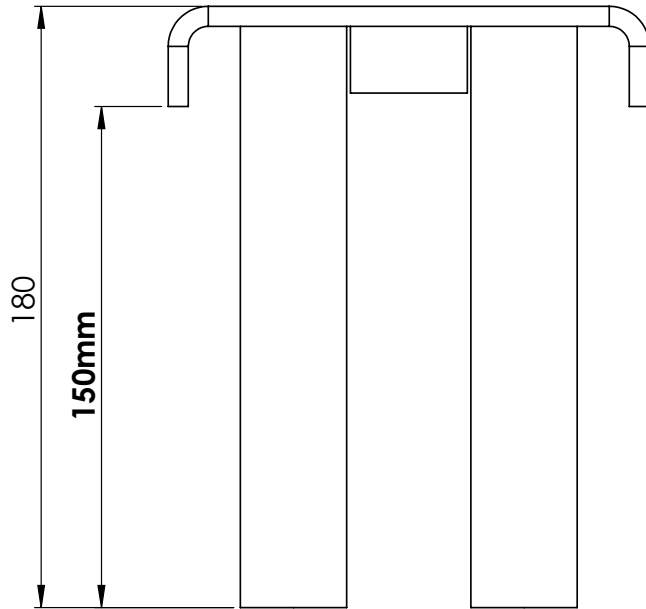
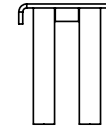
WIRE ROPE INFO:  
DIAMETER Ø6mm  
CONSTRUCTION: 7/19 IWRC  
GRADE 2070  
AS 1666.1-2009


				 <b>Valmont Highway Technology</b> Level 3, Building A, 11 Talavera Road Macquarie Park, NSW 2113, Australia T: +612 9814 1777 www.valmonthighway.com	TOLERANCES Whole Numbers : One Decimal Place : Bend Angle : Straightness : Scale: 1:35	CLIENT  MATERIAL 7/19 IWRC GRADE 2070  FINISH	ITEM ARMORBUFFA CABLE  DRAWING NUMBER 10200326  DRAWN VB CHECKED JA APPROVED LB
2	UPDATED NUMBER OF SLINGS PER KIT	JA	20-02-2023				
1	UPDATED KIT NUMBER DEFINITION	JA	17-11-2022				
0	ORINGINAL ISSUED - 26.10.2020						
REV	DESCRIPTION	APPD	DATE				



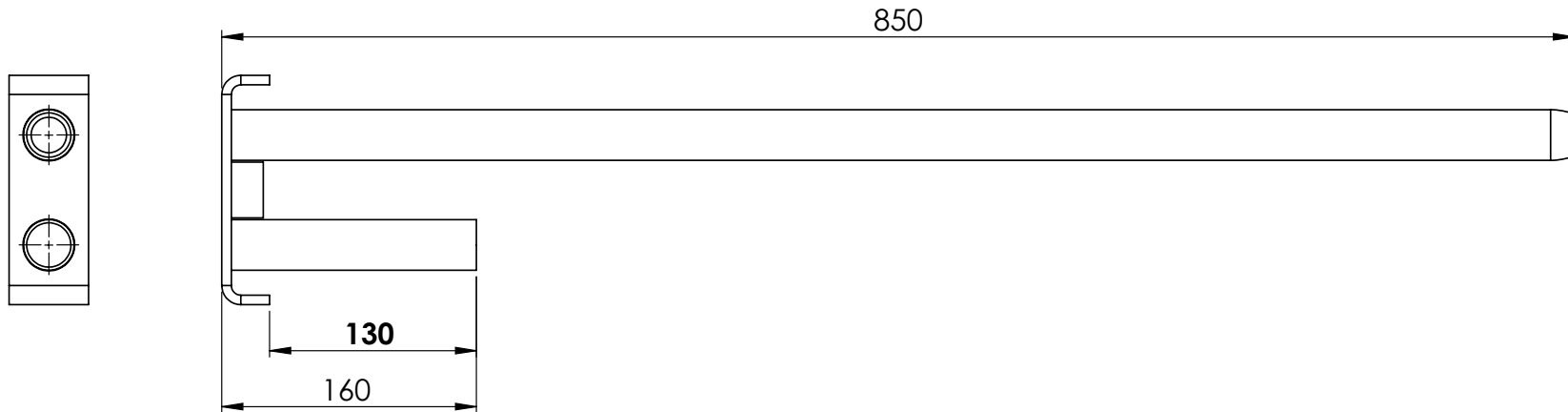


Short 150mm  
Twin Pin

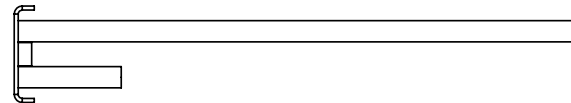



				 <b>valmont</b> HIGHWAY <b>Valmont Highway Technology</b> Level 3, Building A, 11 Talavera Road Macquarie Park, NSW 2113, Australia T: +612 9814 1777 www.valmonthighway.com	TOLERANCES Whole Numbers : One Decimal Place : Bend Angle : Straightness : Scale:	CLIENT  MATERIAL  FINISH	ITEM ArmorBuffa Nose Pin  DRAWING NUMBER <b>10200327</b>
REV	DESCRIPTION	APPD	DATE		ORIGINAL ISSUE - 23.10.2020   		

FOLDER F:\Engineering\3. CURRENT DRAWINGS\COMPONENT DRAWINGS\SLDDRWs\10200327 - ArmorBuffa Nose Pin\

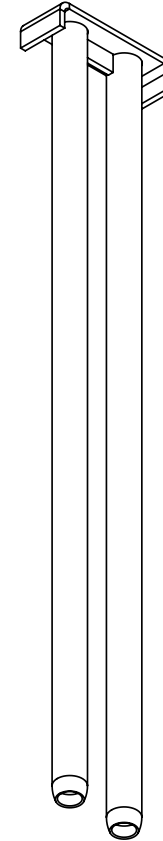
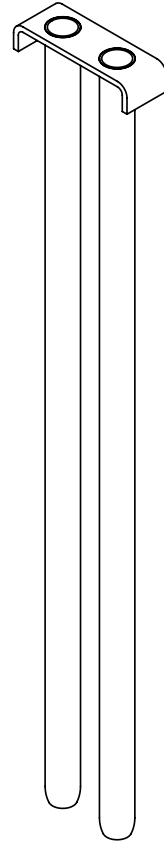
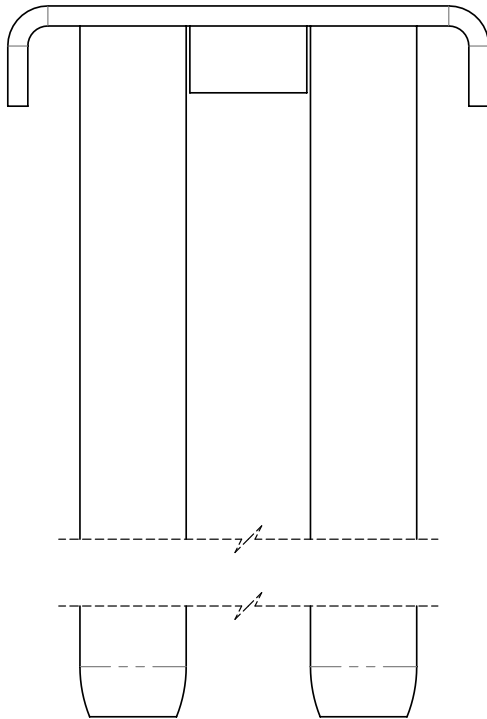
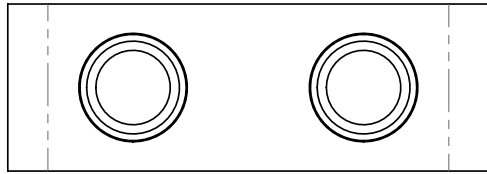


Asymmetric  
Twin Pin



				 <b>Valmont Highway Technology</b> Level 3, Building A, 11 Talavera Road Macquarie Park, NSW 2113, Australia T: +612 9814 1777 www.valmonthighway.com	TOLERANCES Whole Numbers : One Decimal Place : Bend Angle : Straightness : Scale:	CLIENT  MATERIAL  FINISH	ITEM ArmorBuffa Asymmetric Pin  DRAWING NUMBER <h1>10200328</h1>	DRAWN VB	CHECKED JA	APPROVED LB
REV	DESCRIPTION	APPD	DATE							
	ORIGINAL ISSUE - 23.10.2020									

FOLDER F:\Engineering\3. CURRENT DRAWINGS\COMPONENT DRAWINGS\SLDDRWs\10200328 - ArmorBuffa Asymmetric Pin\



NOTE:  
HOT DIP GALVANIZED

The information hereon is proprietary to Valmont Highway Distribution Ltd. and shall not be disclosed, duplicated or used otherwise without the express written approval of Valmont Highway Distribution Ltd.

© 2014 Valmont Highway Distribution Ltd.

REV.	CHANGES	DATE
2	ADD SPACER	17/03/2016
1	INITIAL ISSUE	28/03/2012

SCALE: 1:2		
	DATE	INIT.
DRAWN BY	17/03/2016	LW
APPR'D BY	17/03/2016	BM

### Twin Pin for ArmorZone

		12 Offenhauser Dr East Tamaki New Zealand +64 9 215 5231 info@valmonthighway.com	
		SHEET	DRAWING NUMBER
1 OF 1		10200204	2





*For more information*

contact us on the web

[www.ingalcivil.co.nz](http://www.ingalcivil.co.nz)

**North Island**  
Ph: 021 2464 997

**South Island**  
Ph: 021 1983 311

Email: [sales@ingalcivil.co.nz](mailto:sales@ingalcivil.co.nz)

**Head Office: Sydney**  
57-65 Airds Road, Minto, NSW 2566  
Ph: +61 2 9827 3333  
Fax: +61 2 9827 3300  
Local call (within Australia):  
1300 446 425  
Email: [sales@ingalcivil.com.au](mailto:sales@ingalcivil.com.au)