

# Case Study – Lake Talbot Water Park

**Project Name:** Lake Talbot Water Park Upgrade

**Location:** Narrandera, New South Wales

**Builder:** Total Creations

Locker Webforge Product

- Monowills Link – AS5100 Balustrade

Specifications

- Loadings to C1 Crowd Surge
- NCC – Anti Climb & Edge Protection

Webforge Locker were engaged to design and manufacture a C1 Crowd Surge capable Balustrade as part of a facility upgrade to Lake Talbot Water Park.

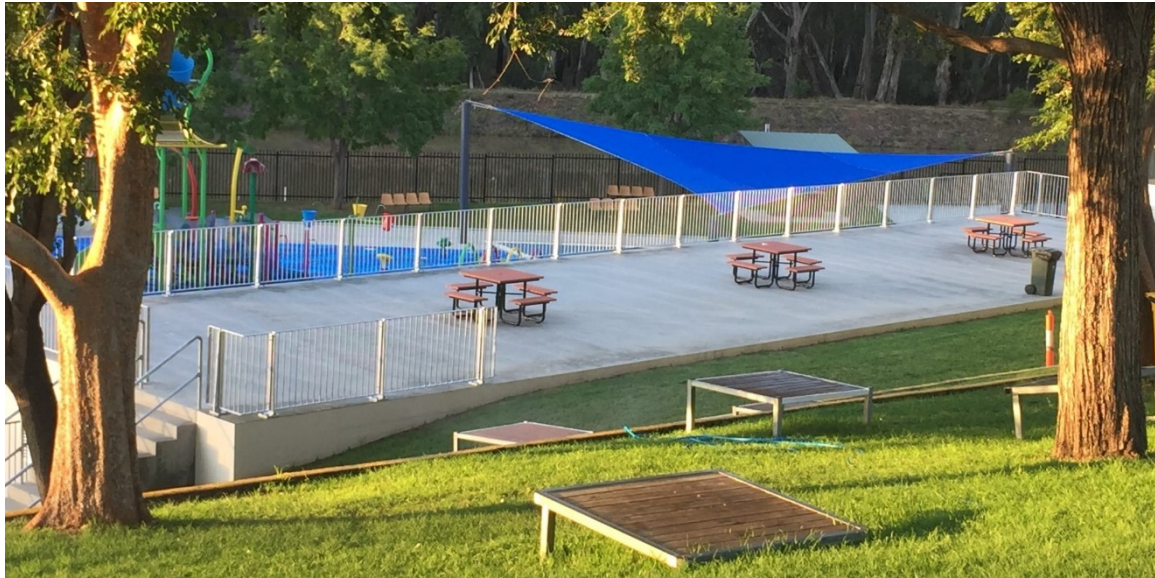
Webforge worked directly with both Total Creations & local Council to deliver the barrier on tight schedule to be ready for a Public opening event Australia Day 2021.

The Monowills Link – AS5100 Barrier enclosed an public elevated fixed seating area that required both perimeter fall protection and potential crowd surge loading capability. The system was supplied in modular form with stanchions, balustrade panels and assembly fixings.





# Case Study – Lake Talbot Water Park



## Product Optimisation

- Concept drawings provided to Council for sign off
- Barrier designed to meet commercial grade public loadings including crowd surge
- Stanchions fabricated with self standing base plate
- Parts optimized for manufacture efficiency, wastage & cost
- Optimisation of stanchion cadence
- Supplied as modular system with stainless steel assembly bolts

