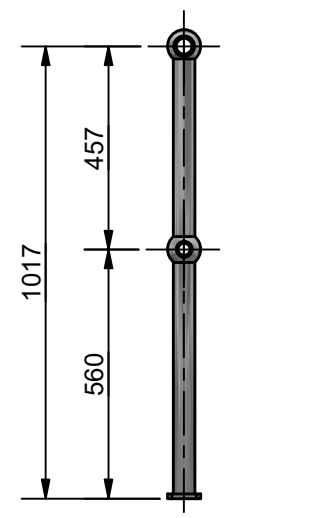
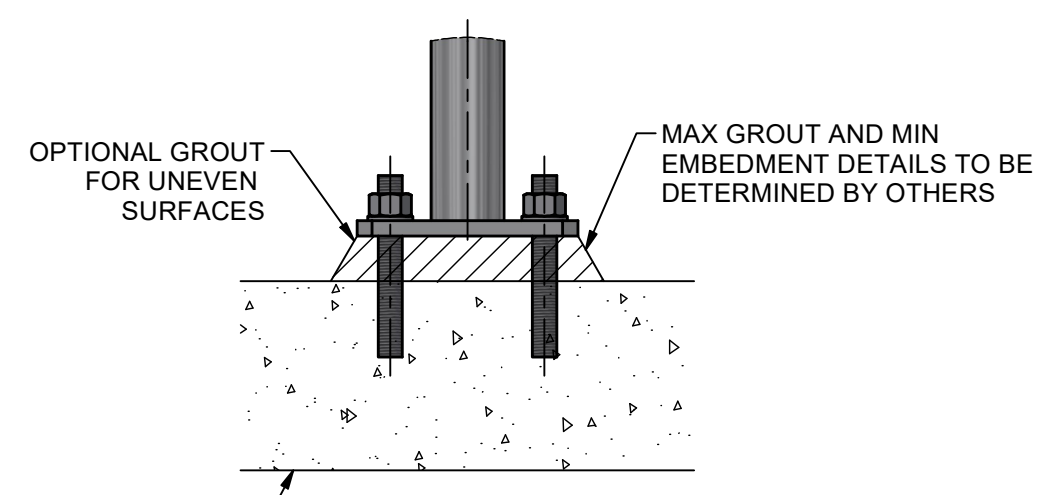


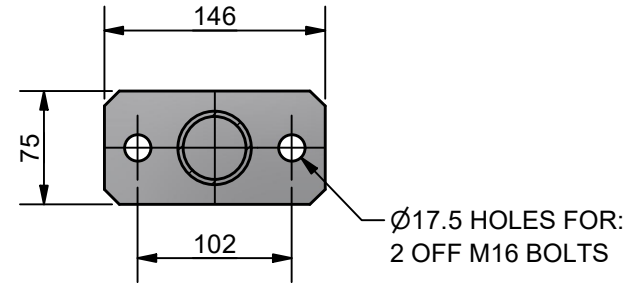
**ELEVATION VIEW**



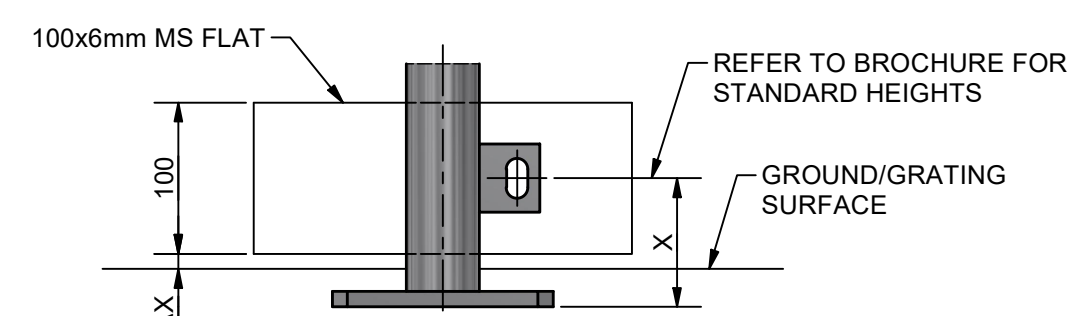
**SECTION A-A**



**DETAIL 1**  
FOOTING DETAIL FOR CONCRETE MOUNTING



**SECTION B-B**  
TYPICAL BASE PLATE DETAIL  
FOR PLATFORM AND SIDE STANCHIONS



**KICKPLATE DETAIL**  
OPTIONAL - BOLTED OR WELDED

RECOMMENDED STANCHION SPACING		
STANDARD	LOADING	MAX CRS
AS/NZS 1657	0.35 kN/m	2.0 m *
AS/NZS 1170 (C3)	0.75 kN/m	1.65 m

\*LONGER STANCHION SPACING MAY BE POSSIBLE THROUGH CONSULTATION WITH THE WEBFORGE LOCKER TECHNICAL TEAM; CONDITIONS APPLY

- NOTES:**
- CUSTOMER TO NOMINATE STANCHION TYPE (IN GROUND, PLATFORM OR SIDE).
  - CUSTOMER TO NOMINATE KICK PLATE IF REQUIRED (100 x 6mm FLAT).
  - PROTECTION TREATMENT AND PAINT SYSTEMS TO BE IN ACCORDANCE WITH CLIENT REQUIREMENTS.
  - ALL POSTS TO BE 40NB (48.3 OD, 3.2 THICK) STEEL PIPE.
  - REFER "MWBR-EX-005" FOR TYPICAL WELDING DETAILS.
  - SLIP JOINTS CAN BE REQUESTED BY CLIENT IF HOT WORKS ARE NOT PERMITTED ON SITE.
  - COLD GALVANISING TREATMENT FOR IN-SITU WELDS, CUT ENDS OR OTHER BARE STEEL TO BE IN ACCORDANCE WITH AS/NZS 4680:2006 CLAUSE 8 REPAIR PROCEDURE.
  - PEDESTRIAN BARRIERS ARE NOT INTENDED TO BE USED IN SITUATIONS WHERE MOTOR VEHICLES REQUIRE RESTRAINT.

1	NOTES REVISED, SPACING TABLE ADDED	25/09/25	AJM
0	ISSUED FOR PUBLICATION	23/06/21	AJM
REV	DESCRIPTION	DATE	DRAWN

 PROJECTION DO NOT SCALE ALL DIMENSIONS IN mm U.N.O.	DRAWN: AJM DRAWN DATE: 23/06/21 APPROVED: MT APPROVED DATE: 23JUN21	CLIENT: WEBFORGE LOCKER PRODUCT: <b>MONOWILLS BARRIER 2 RAIL ASSEMBLY</b>		
	 A valmont COMPANY	DRAWING NUMBER: MWBR-EX-001	SHEET: 1 OF 1	REV: 1

**DRAWING DISCLAIMER:**  
WEBFORGE PROVIDES THE INFORMATION CONTAINED IN THIS DRAWING AS A GUIDE FOR YOUR INFORMATION ONLY. WEBFORGE HAS TAKEN REASONABLE CARE TO ENSURE THE ACCURACY OF THE INFORMATION AT THE TIME OF PRODUCTION. WEBFORGE EXPRESSLY DISCLAIMS ALL LIABILITY WHATSOEVER FOR (INCLUDING ANY DIRECT OR INDIRECT LOSS OR DAMAGE, COSTS OR EXPENSES HOWSOEVER INCURRED BY ANY PERSON) RELIANCE ON THE WHOLE OR ANY PART OF THE INFORMATION CONTAINED IN OR OMITTED FROM THIS DRAWING. WEBFORGE RESERVES THE RIGHT TO MAKE TECHNICAL CHANGES WITHOUT NOTICE.