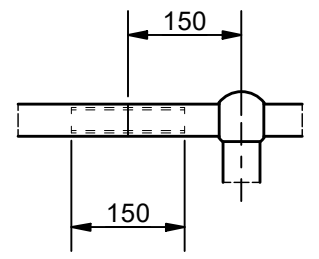


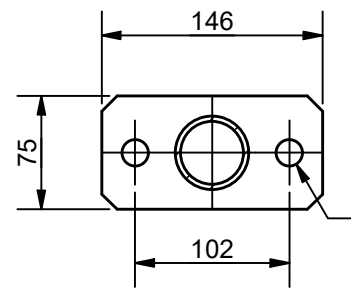
SECTION A-A

ELEVATION VIEW

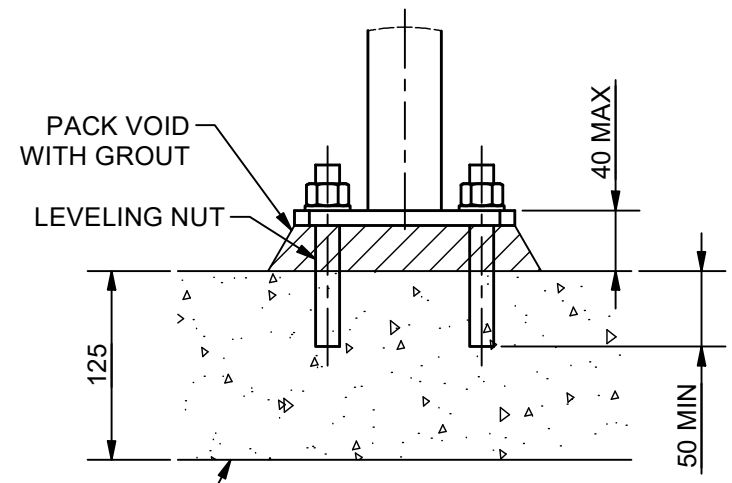
SQUARE OR CIRCULAR FORMWORK TO BE USED AT TOP OF FOOTING. CONCRETE TO SLOPE 25mm AWAY FROM POST FORMWORK AS DIRECTED BY CLIENT



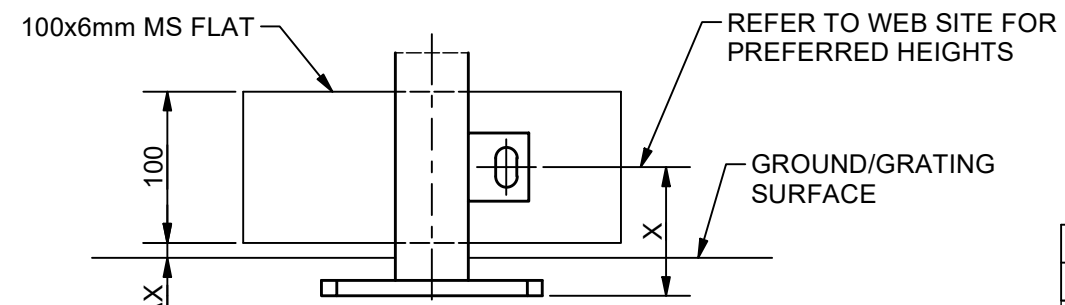
DETAIL 1
TYPICAL SLIP JOINT



SECTION B-B
TYPICAL BASE PLATE DETAIL FOR PLATFORM AND SIDE STANCHIONS



DETAIL 2



KICKPLATE DETAIL
OPTIONAL - BOLTED OR WELDED

NOTES:

- CUSTOMER TO NOMINATE PREFERRED FOOTING / FIXING (IN GROUND, PLATFORM & SIDE MOUNT).
- CUSTOMER TO NOMINATE KICK PLATE IF REQUIRED (100MM X 6MM)
- PROTECTION TREATMENT AND PAINT SYSTEMS TO BE IN ACCORDANCE WITH CLIENT REQUIREMENTS.
- ALL POSTS TO BE 40NB (48.3 OD, 3.2 THICK) GALVANISED STEEL TUBE.
- BARRIER DESIGNED TO MEET TYPE C3 AS/NZS 1170:2002 (R2016) & AS/NZS 1657:2018
- ALL WELDS TO BE 4MM C.F.W. (CONTINUOUS FILLET WELDS) TO AS/NZS 1554.1.
- PREFERRED COLD GALVANISING TREATMENT FOR IN-SITU WELDS, CUT ENDS OR OTHER BARE STEEL TO BE IN ACCORDANCE WITH AS/NZS 4680:2006 CLAUSE 8 REPAIR PROCEDURE.
- ALL CONCRETE TO BE GRADE N25 OR AS CLIENT SPECIFIED.
- POSTS INSTALLED IN EXISTING BRIDGE/CULVERT CONCRETE TO BE GROUTED INTO Ø90mm HOLE WITH 1:3 CEMENT MORTAR BY VOLUME AFTER THEY HAVE BEEN CAREFULLY ALIGNED.
- THESE FENCES ARE INTENDED AS A PEDESTRIAN BARRIER AND ARE NOT TO BE USED IN SITUATIONS WHERE MOTOR VEHICLES REQUIRE RESTRAINT.

0	ISSUED FOR PUBLICATION	23/06/21	AJM
REV	DESCRIPTION	DATE	DRAWN
	DRAWN	AJM	CLIENT WEBFORGE
	DRAWN DATE	23JUN21	PRODUCT
	APPROVED	MT	MONOWILLS
	APPROVED DATE	23JUN21	BARRIER 2 RAIL ASSEMBLY
PROJECTION			
DO NOT SCALE			
ALL DIMENSIONS IN mm U.N.O.	DRAWING NUMBER	SHEET	REV
	MWBR-EX-001	1 OF 1	0

DRAWING DISCLAIMER:
WEBFORGE PROVIDES THE INFORMATION CONTAINED IN THIS DRAWING AS A GUIDE FOR YOUR INFORMATION ONLY. WEBFORGE HAS TAKEN REASONABLE CARE TO ENSURE THE ACCURACY OF THE INFORMATION AT THE TIME OF PRODUCTION. WEBFORGE EXPRESSLY DISCLAIMS ALL LIABILITY WHATSOEVER FOR (INCLUDING ANY DIRECT OR INDIRECT LOSS OR DAMAGE, COSTS OR EXPENSES HOWSOEVER INCURRED BY ANY PERSON) RELIANCE ON THE WHOLE OR ANY PART OF THE INFORMATION CONTAINED IN OR OMITTED FROM THIS DRAWING. WEBFORGE RESERVES THE RIGHT TO MAKE TECHNICAL CHANGES WITHOUT NOTICE.