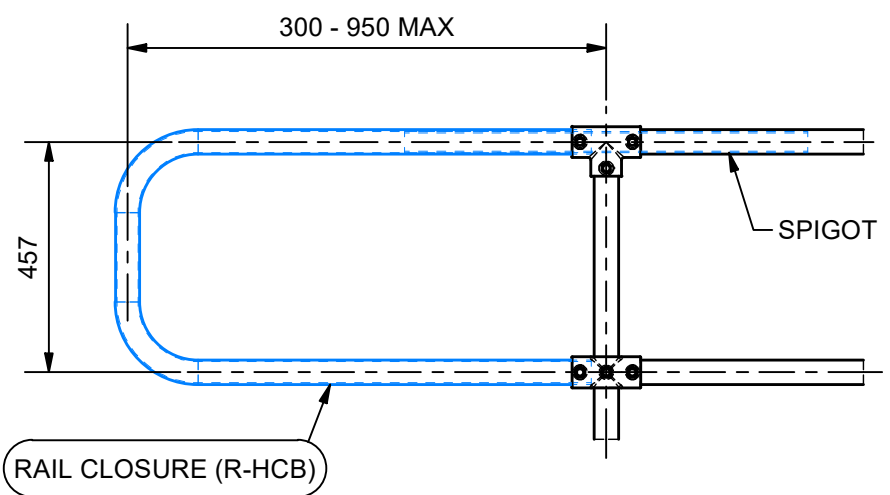


SECTION A-A

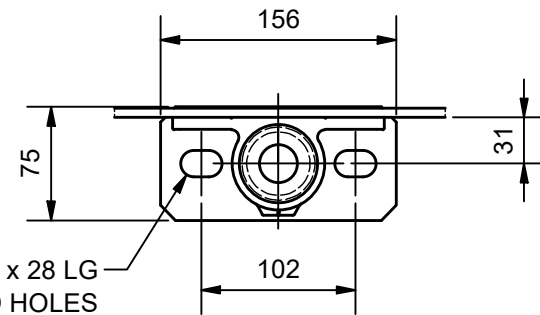
ELEVATION VIEW

TYPICAL MONOWILLS LINK RAIL MAINTENANCE BARRIER
 DESIGNED FOR RAIL MAINTENANCE PLATFORMS & WALKWAYS WHERE LONG SECTIONS OF LOW COMPLEXITY BARRIER IS REQUIRED.
 SECTIONAL PANELS ALIGNED WITH REPETITIVE PRE-CAST FERRULE LOCATIONS AT 2000MM
 SECTIONAL PANELS ALLOW BARRIER TO CONFORM WITH RAIL ELEVATION & CURVATURE WITHOUT CUSTOM FABRICATION

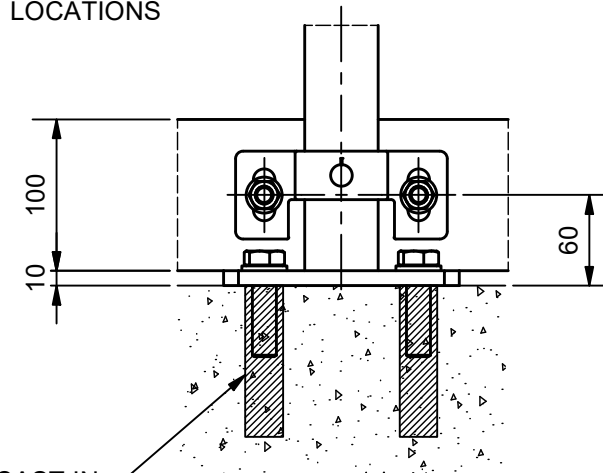


DETAIL 1

DUE TO CANTILEVERED LOAD POTENTIAL UNDER THIS SCENARIO, WEBFORGE HAVE DEVELOPED A RAIL SPECIFIC HORIZONTAL CLOSURE BEND (R-HCB) WITH INTEGRATED SPIGOT. R-HCB IS CAPABLE OF SPANNING UP TO 950MM WHEN USED IN CONJUNCTION WITH THE MONOWILLS LINK SYSTEM, ENSURING DIMENSIONAL AND LOADING COMPLIANCE WITH AS/NZS 1657 REQUIREMENTS. **TYPICAL STANDARD CLOSURE BENDS DO NOT COMPLY.**

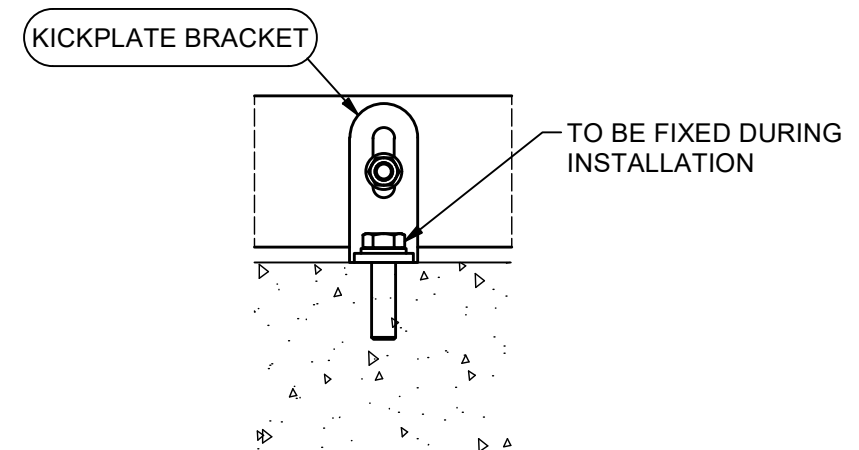


Ø18 x 28 LG
 SLOTTED HOLES
 ALLOW FOR TOLERANCE
 OF CAST IN FERRULE
 LOCATIONS



DETAIL 2

M16 CAST IN
 FERRULE
 SUPPLIED
 BY OTHERS



DETAIL 3

TYPICAL KICKPLATE MOUNTING

NOTES:

- CUSTOMER TO NOMINATE PREFERRED FOOTING / FIXING (PLATFORM TYPICAL).
- ALL POSTS TO BE 40NB (48.3 OD, 3.2 THICK) GALVANISED STEEL TUBE.
- BARRIER DESIGNED TO MEET AS/NZL 1657.2018
- STANDARD HORIZONTAL CLOSURE BEND (HCB) MAX SPAN IS 300MM. TO ACHIEVE ADDITIONAL HCB SPANNING CAPABILITY (300-950 MAX) AND ENSURE COMPLIANCE TO AS/NZS 1657, WEBFORGE'S R-HCB MUST BE SPECIFIED AND USED AS PART OF THE MONOWILLS LINK SYSTEM AS DETAILED
- PREFERRED COLD GALVANISING TREATMENT FOR IN-SITU WELDS, CUT ENDS OR OTHER BARE STEEL TO BE IN ACCORDANCE WITH AS/NZS 4680:2006 CLAUSE 8 REPAIR PROCEDURE.
- PROTECTION TREATMENT AND PAINT SYSTEMS TO BE IN ACCORDANCE WITH CLIENT REQUIREMENTS.
- ALL CONCRETE TO BE GRADE N25 OR AS CLIENT SPECIFIED.
- POSTS INSTALLED IN EXISTING BRIDGE/CULVERT CONCRETE TO BE GROUTED INTO Ø90mm HOLE WITH 1:3 CEMENT MORTAR BY VOLUME AFTER THEY HAVE BEEN CAREFULLY ALIGNED.
- THESE BARRIERS ARE INTENDED AS A PEDESTRIAN BARRIER AND ARE NOT TO BE USED IN SITUATIONS WHERE MOTOR VEHICLES REQUIRE RESTRAINT.

0	ISSUED FOR PUBLICATION	26/05/21	AJM
REV	DESCRIPTION	DATE	DRAWN
PROJECTION	DRAWN	AJM	CLIENT WEBFORGE PRODUCT MONOWILLS LINK RAIL MAINTENANCE BARRIER ASSEMBLY
DO NOT SCALE	DRAWN DATE	24/05/21	
	APPROVED	MT	
ALL DIMENSIONS IN mm U.N.O.	APPROVED DATE	24/05/21	DRAWING NUMBER
			SHEET
		1	REV
		1 OF 1	0



DRAWING DISCLAIMER:
 WEBFORGE PROVIDES THE INFORMATION CONTAINED IN THIS DRAWING AS A GUIDE FOR YOUR INFORMATION ONLY. WEBFORGE HAS TAKEN REASONABLE CARE TO ENSURE THE ACCURACY OF THE INFORMATION AT THE TIME OF PRODUCTION. WEBFORGE EXPRESSLY DISCLAIMS ALL LIABILITY WHATSOEVER FOR (INCLUDING ANY DIRECT OR INDIRECT LOSS OR DAMAGE, COSTS OR EXPENSES HOWSOEVER INCURRED BY ANY PERSON) RELIANCE ON THE WHOLE OR ANY PART OF THE INFORMATION CONTAINED IN OR OMITTED FROM THIS DRAWING. WEBFORGE RESERVES THE RIGHT TO MAKE TECHNICAL CHANGES WITHOUT NOTICE.