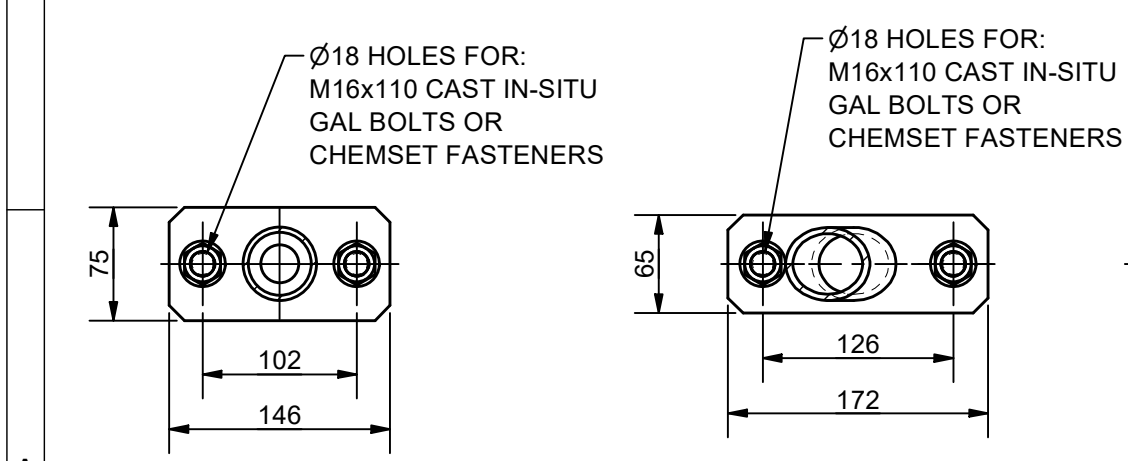
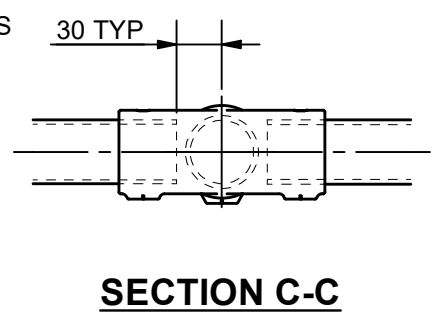


**ALTERNATE STANCHIONS**

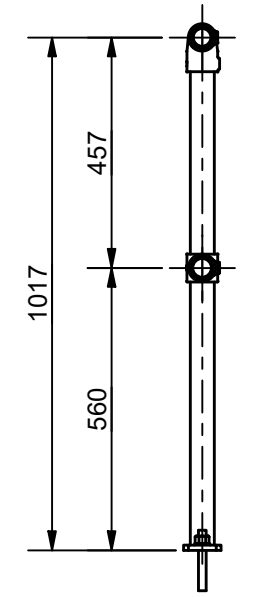


**SECTION A-A**  
TYPICAL BASE PLATE DETAIL FOR PLATFORM AND SIDE STANCHIONS

**SECTION B-B**  
TYPICAL BASE PLATE DETAIL FOR ANGLE MOUNT STANCHIONS



**SECTION C-C**



**SECTION D-D**

**NOTES:**

1. CUSTOMER TO NOMINATE PREFERRED FOOTING / FIXING (IN GROUND, PLATFORM & SIDE MOUNT).
2. ALL POSTS TO BE 40NB (48.3 OD, 3.2 THICK) GALVANISED STEEL TUBE.
3. BARRIER DESIGNED TO MEET BARRIER TYPE C3 AS/NZL 1170:2002 (R2016) & AS/NZL 1657.2018.
4. WHEN MEASURING, CLIENT TO PROVIDE PHYSICAL LENGTH AND ANGLE OF THE WING WALL TOP SURFACE. IF TRANSITION ANGLE IS NOT CLEAR ON PROJECT DRAWINGS, CLOSURE BENDS AT TRANSITION ANGLE CAN BE USED. REFER DETAIL 1.
5. PREFERRED COLD GALVANISING TREATMENT FOR IN-SITU WELDS, CUT ENDS OR OTHER BARE STEEL TO BE IN ACCORDANCE WITH AS/NZS 4680:2006 CLAUSE 8 REPAIR PROCEDURE.
6. PROTECTION TREATMENT AND PAINT SYSTEMS TO BE IN ACCORDANCE WITH CLIENT REQUIREMENTS.
7. ALL CONCRETE TO BE GRADE N25 OR AS CLIENT SPECIFIED.
8. POSTS INSTALLED IN EXISTING CONCRETE TO BE GROUTED INTO Ø90mm HOLE WITH 1:3 CEMENT MORTAR BY VOLUME AFTER THEY HAVE BEEN CAREFULLY ALIGNED.
9. THESE FENCES ARE INTENDED AS A PEDESTRIAN BARRIER AND ARE NOT TO BE USED IN SITUATIONS WHERE MOTOR VEHICLES REQUIRE RESTRAINT.

0	ISSUED FOR PUBLICATION	07/04/21	AJM
REV	DESCRIPTION	DATE	DRAWN
	DRAWN	AJM	CLIENT WEBFORGE
	DRAWN DATE	07/04/21	PRODUCT <b>MONOWILLS LINK</b>
	APPROVED	MT	<b>CIVIL WING WALL</b>
	APPROVED DATE	07/04/21	ASSEMBLY
			DRAWING NUMBER
			SHEET
	<b>LKCV-EX-001</b>		REV
		1 OF 1	0

**DRAWING DISCLAIMER:**  
WEBFORGE PROVIDES THE INFORMATION CONTAINED IN THIS DRAWING AS A GUIDE FOR YOUR INFORMATION ONLY. WEBFORGE HAS TAKEN REASONABLE CARE TO ENSURE THE ACCURACY OF THE INFORMATION AT THE TIME OF PRODUCTION. WEBFORGE EXPRESSLY DISCLAIMS ALL LIABILITY WHATSOEVER FOR (INCLUDING ANY DIRECT OR INDIRECT LOSS OR DAMAGE, COSTS OR EXPENSES HOWSOEVER INCURRED BY ANY PERSON) RELIANCE ON THE WHOLE OR ANY PART OF THE INFORMATION CONTAINED IN OR OMITTED FROM THIS DRAWING. WEBFORGE RESERVES THE RIGHT TO MAKE TECHNICAL CHANGES WITHOUT NOTICE.

