

D

C

B

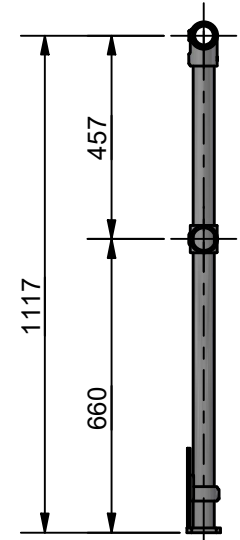
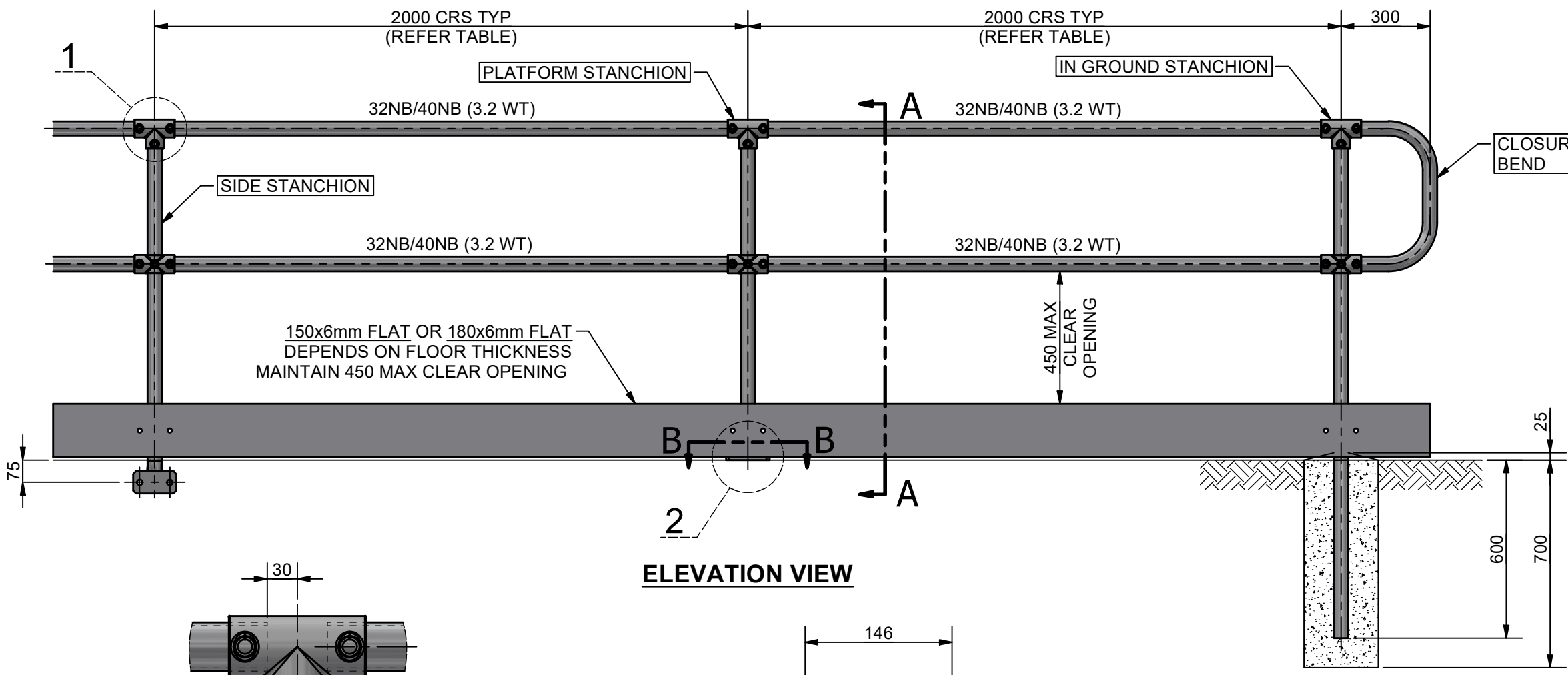
A

D

C

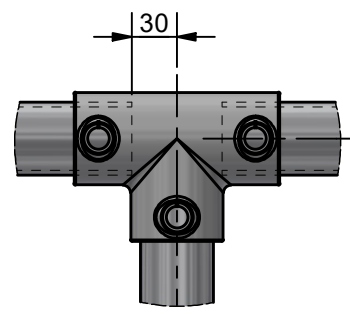
B

A

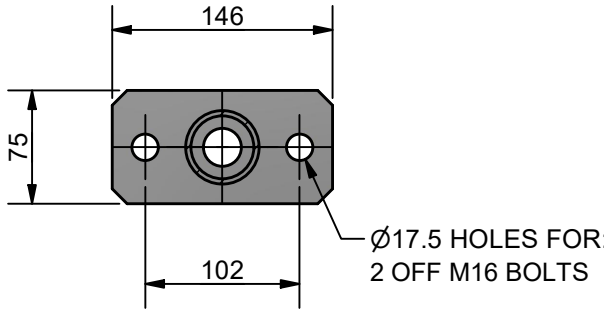


SECTION A-A

ELEVATION VIEW



DETAIL 1



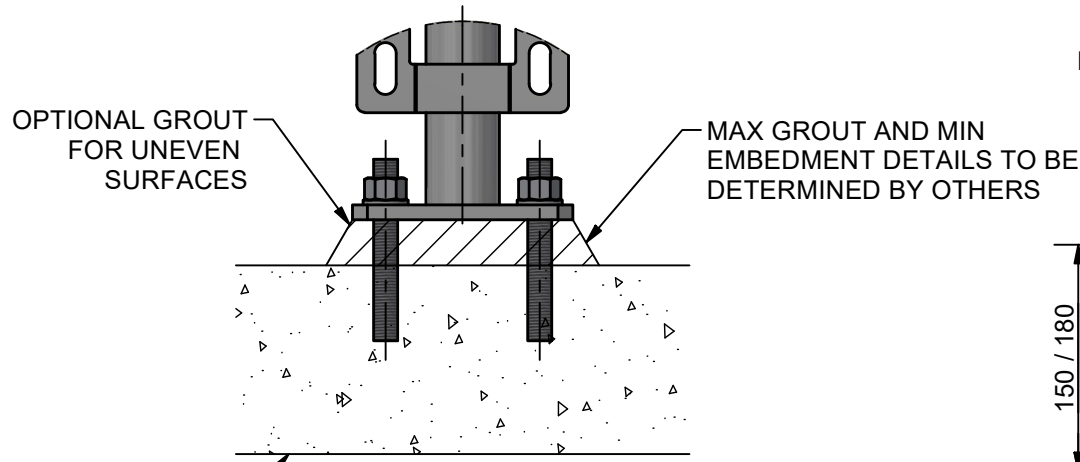
SECTION B-B
TYPICAL BASE PLATE DETAIL
FOR PLATFORM AND SIDE STANCHIONS

RECOMMENDED STANCHION SPACING		
STANDARD	LOADING	MAX CRS
AS/NZS 1657	0.35 kN/m	2.0 m *
AS/NZS 1170 (C3)	0.75 kN/m	1.5 m

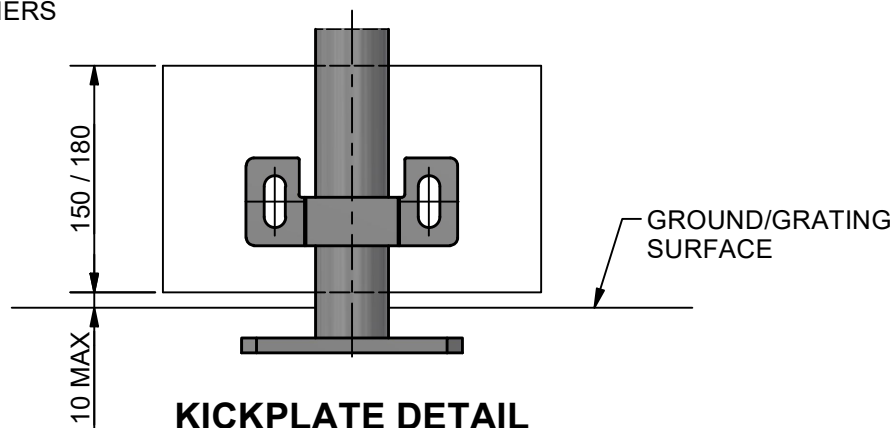
*LONGER STANCHION SPACING MAY BE POSSIBLE THROUGH CONSULTATION WITH THE WEBFORGE LOCKER TECHNICAL TEAM; CONDITIONS APPLY

NOTES:

- CUSTOMER TO NOMINATE STANCHION TYPE (IN GROUND, PLATFORM OR SIDE).
- CUSTOMER TO NOMINATE RAIL SIZE - 32NB STANDARD SYSTEM OR 40NB HEAVY SYSTEM.
- PROTECTION TREATMENT AND PAINT SYSTEMS TO BE IN ACCORDANCE WITH CLIENT REQUIREMENTS.
- ALL POSTS TO BE 40NB (48.3 OD, 3.2 THICK) GALVANISED STEEL PIPE.
- ALL HORIZONTAL RAILS TO BE ROLLED TO MATCH SHAPE OF PATH IF RADIUS IS LESS THAN 14m. REFER "MWBR-EX-005" FOR TYPICAL WELDING DETAILS.
- BARRIER DESIGNED TO MEET NZBC-F4 TABLE 1.
- COLD GALVANISING TREATMENT FOR IN-SITU WELDS, CUT ENDS OR OTHER BARE STEEL TO BE IN ACCORDANCE WITH AS/NZS 4680:2006 CLAUSE 8 REPAIR PROCEDURE.
- PEDESTRIAN BARRIERS ARE NOT INTENDED TO BE USED IN SITUATIONS WHERE MOTOR VEHICLES REQUIRE RESTRAINT.



DETAIL 2
FOOTING DETAIL FOR CONCRETE MOUNTING



KICKPLATE DETAIL

1	NOTES REVISED, CLEAR OPENING MAX CORRECTED	25/09/25	AJM
0	ISSUED FOR PUBLICATION	17/03/25	AJM
REV	DESCRIPTION	DATE	DRAWN

<p>PROJECTION DO NOT SCALE</p>	DRAWN: AJM DRAWN DATE: 17/03/25 APPROVED: MT APPROVED DATE: 17/03/25	CLIENT: WEBFORGE LOCKER PRODUCT: MONOWILLS LINK BARRIER - 1100 - 2 RAIL ASSEMBLY
	<p>A valmont COMPANY</p>	
	DRAWING NUMBER: LKBR-EX-003 SHEET: 1 OF 1 REV: 1	

DRAWING DISCLAIMER:
WEBFORGE PROVIDES THE INFORMATION CONTAINED IN THIS DRAWING AS A GUIDE FOR YOUR INFORMATION ONLY. WEBFORGE HAS TAKEN REASONABLE CARE TO ENSURE THE ACCURACY OF THE INFORMATION AT THE TIME OF PRODUCTION. WEBFORGE EXPRESSLY DISCLAIMS ALL LIABILITY WHATSOEVER FOR (INCLUDING ANY DIRECT OR INDIRECT LOSS OR DAMAGE, COSTS OR EXPENSES HOWSOEVER INCURRED BY ANY PERSON) RELIANCE ON THE WHOLE OR ANY PART OF THE INFORMATION CONTAINED IN OR OMITTED FROM THIS DRAWING. WEBFORGE RESERVES THE RIGHT TO MAKE TECHNICAL CHANGES WITHOUT NOTICE.

