

OVERVIEW

EzyGuard 4 is the next generation of steel guardrail barriers featuring a smart design, rapid installation and driver confidence. **EzyGuard 4** has been fully crash tested and evaluated according to the specifications for Test Level 3 (TL-3) of the AASHTO Manual for Assessing Safety Hardware (MASH) and now offers NCHRP-350 TL-4 containment level.

Using up to 40% less steel than conventional guardrail barriers, the **EzyGuard 4** design features specially engineered Z-posts and **EzyGuard 4** sliders.

The Z-posts are manufactured from galvanised cold rolled steel, keeping their manufacturing very simple and cost competitive with traditional barrier systems.

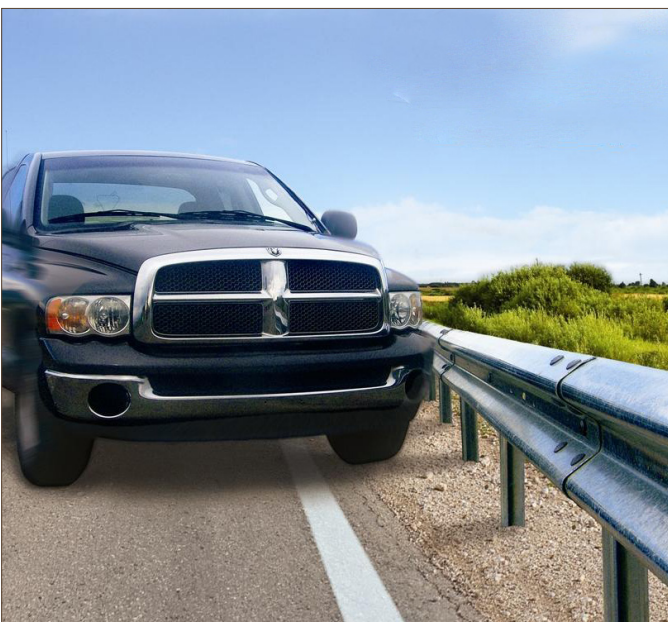
EzyGuard 4 sliders are used to secure the W-beam rails to the Z-posts and eliminate the requirement for blocking pieces and rail stiffening plates. This unique connection provides a soft ride-down for vehicle occupants and smooth vehicle containment and redirection.



2270kg vehicle, 100kph, 25° Re-directive impact on EZYGUARD 4 (TEST 3-11 MASH)

FEATURES

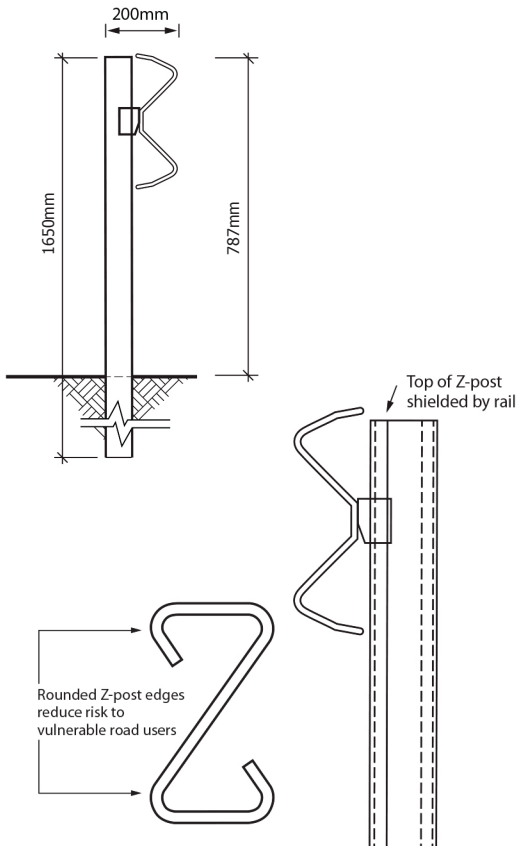
- Compact footprint system: only 200mm width
- Proprietary steel post allows for "Driven" installation without predrilling, accelerating installation and impact repair process
- High performing, low cost system
- Very low part count, no blockouts are required
- Patented post design allows the guardrail to dynamically adjust the rail height during impact compensating for different vehicle sizes and trajectories
- Exceptional post-impact vehicle control and behaviour
- Light system which allows for efficient handling and transport
- Compatible with standard guardrail components, many transitions available to Terminal Ends and other barrier systems



SPECIFICATIONS



- No blockout or backing piece is required between guardrail panel and steel post
- Tested to TL-3 MASH and now offers NCHRP-350 TL-4 containment level
- Dynamic Delection is 1.65m
- All components are hot dip galvanized
- Height to the top of the guardrail is 787mm
- Standard post spacing is 2.0m (or 1.905m optional)
- Lenght of Need (LoN) is contained in the terminal ends, barrier in between is fully re-directive



DEFLECTIONS

Deflections quoted on the table below are from actual crash testing and the figures published are from the test involving a 1100 kg compact vehicle impacting at 100 kph/25°, a 2270 kg pickup truck impacting at 100kph/25° and a 8000 kg truck impacting at 80 kph/15°.

| Vehicle Weight | Post Spacing | Dynamic Deflection | Test Condition |
|----------------|--------------|--------------------|----------------|
| 1100 kg | 2.0 m | 0.99 m | 3-10 MASH |
| 2270 kg | 2.0 m | 1.65 m | 3-11 MASH |
| 8000 kg | 2.0m | 1.53 m | 4-12 NCHRP-350 |



SUMMARY

EzyGuard 4 is a low profile TL-3/TL-4 Guardrail system which uses standard W-Beam. Suitable for Roadside and Median applications and does not require the use of Blockouts.

EzyGuard 4 offers a very versatile and simplistic low parts count system, this simplifies its installation and repair process, promptly reestablishing safety in our roads, saving more lives.



AMVHD(v1)

REPRESENTED BY:

