

Job Name: _____	Client Name: _____
Job Location - City: _____ State: _____	Created By: _____ Date: _____
Product: 5A01ASE -- Quote: _____	Customer Approval: _____ Date: _____

## SPECIFICATIONS

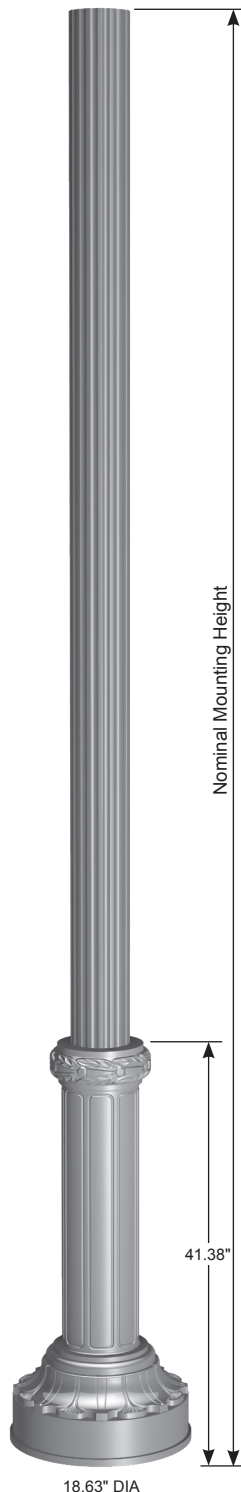
**Post** - The post shaft is either spun or extruded from 6000 series alloy aluminum.

**Post Top** - A post top plate and tenon can be provided for top mount luminaire and/or bracket. A removable finial is available for posts receiving drilling patterns for side-mount luminaire arm assemblies.

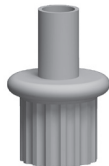
**Structural Base** - The structural base is cast from 356 alloy aluminum and provided with two circumferential access doors near the bottom of the base. A grounding provision is provided. The post shaft is inserted and welded into the structural base casting. The completed assembly is heat-treated to a T6 temper after the structural welding is completed.

**Anchor Bolts** - Anchor bolts conform to ASTM F1554 Grade 55 and are provided with two hex nuts and two flat washers. Bolts have an "L" bend on one end and are galvanized a minimum of 12" on the threaded end.

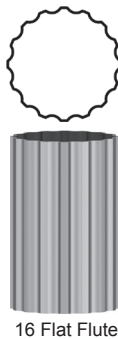
**Finish** - The standard finish for the post assembly and components is polyester powder applied coating in accordance with Valmont's Specifications. Additional finish options available upon request.



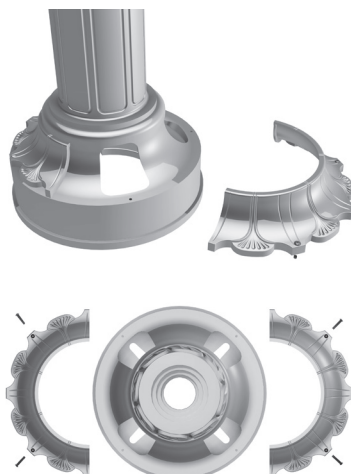
**Tenon Top**



**Cross Section**



**Access Doors**



18.63" DIA

# PARK STREET

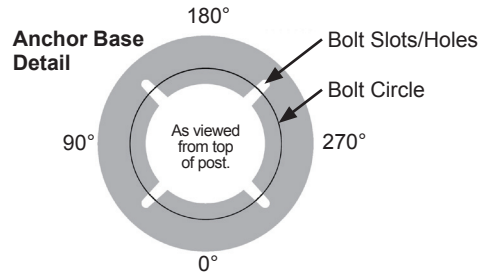
## Fluted Tapered/Non-Tapered Aluminum Post

**valmont**   
STRUCTURES

Job Name: _____ Job Location - City: _____ State: _____ Product: 5A01ASE -- Quote: _____	Client Name: _____ Created By: _____ Date: _____ Customer Approval: _____ Date: _____
--	---

### ANCHORAGE DATA

STRUCTURAL BASE				ANCHOR BOLTS		
BOLT CIRCLE						
DIA (IN)	± (IN)	DIAMETER (IN)	THK (IN)	DIA x LENGTH x HOOK (IN)	PROJECTION (IN)	± (IN)
13	1	18.63	0.75	0.75 x 17.00 x 3.00	3.63	0.25



### LOAD AND DIMENSIONAL DATA

DESIGN INFORMATION							POST DIMENSIONS				MODEL NUMBER
NOMINAL MOUNTING HEIGHT	80 MPH w/1.3 GUST <sup>1</sup>		90 MPH w/1.3 GUST <sup>1</sup>		100 MPH w/1.3 GUST <sup>1</sup>		BASE OD (IN)	TOP OD (IN)	WALL THK (IN)	STRUCTURE WEIGHT <sup>3</sup> (LBS)	
	MAX LUMINAIRE EPA <sup>2</sup> (SQFT)	MAX LUMINAIRE WEIGHT <sup>2</sup> (LBS)	MAX LUMINAIRE EPA <sup>2</sup> (SQFT)	MAX LUMINAIRE WEIGHT <sup>2</sup> (LBS)	MAX LUMINAIRE EPA <sup>2</sup> (SQFT)	MAX LUMINAIRE WEIGHT <sup>2</sup> (LBS)					
Fluted Round Non-Tapered											
12'-0"	20.3	300	15.6	300	12.1	300	6.00	6.00	0.125	114	120060604UPS
14'-0"	15.7	300	11.8	300	8.9	300	6.00	6.00	0.125	119	140060604UPS
16'-0"	12.1	300	8.8	300	6.4	300	6.00	6.00	0.125	125	160060604UPS
18'-0"	9.1	300	6.3	300	4.3	300	6.00	6.00	0.125	130	180060604UPS
	15.6	300	11.4	300	8.5	300	6.00	6.00	0.188	149	180060606UPS
Fluted Round Tapered											
12'-0"	20.6	300	15.8	300	12.4	300	6.00	4.80	0.125	111	120048604VPS
14'-0"	16.1	300	12.2	300	9.4	300	6.00	4.52	0.125	116	140045604VPS
16'-0"	12.6	300	9.3	300	7.0	300	6.00	4.24	0.125	119	160042604VPS
18'-0"	9.8	300	7.1	300	5.1	300	6.00	3.96	0.125	123	180040604VPS

- EPA values are calculated using fastest mile winds.
- Maximum EPA (Effective Projected Area) and weight values are based on top mounted luminaires and/or brackets having a centroid 2'-6" above and 1'-6" eccentric to the post top at Nominal Mounting Height. Variations from sizes above are available upon inquiry at the factory. Satisfactory performance of posts is dependent upon the post being properly attached to a supporting foundation of adequate design.
- Structure Weight is a nominal value which includes the post shaft and structural base.

### PRODUCT ORDERING CODES

DESIGN SERIES	CROSS SECTION	MODEL NUMBER		FIXTURE MOUNTING	COLOR	OPTIONS
5A01AS	E					
	16 Flat Flute					
		<b>Fluted Round Non-Tapered</b> 120060604UPS 140060604UPS 160060604UPS 180060604UPS 180060606UPS	<b>Fluted Round Tapered</b> 120048604VPS 140045604VPS 160042604VPS 180040604VPS	<b>Drill Mounting</b> D1 = 1 Luminaire D2 = 2 @ 180° D3 = 3 @ 120° D4 = 4 @ 90° D5 = 2 @ 90° D6 = 3 @ 90° <b>Tenon Mounting</b> P2 = 2.38" OD x 4.00" PD = 3.00" OD x 3.00" -- = Plain Top P9 = Other Tenon (Contact Factory)	DWH = White DSS = Sandstone HTG = Hunter Green DNA = Natural Aluminum DCG = Charcoal Gray DMB = Medium Bronze DNB = New Dark Bronze DDB = Dark Bronze DBL = Black DSB = Steel Blue DTG = Dark Green DBR = Red SC = Special Color (Contact Factory)	See Decorative Accessories or Decorative Arms - Aluminum at <a href="http://valmontstructures.com">valmontstructures.com</a> (Please Specify)