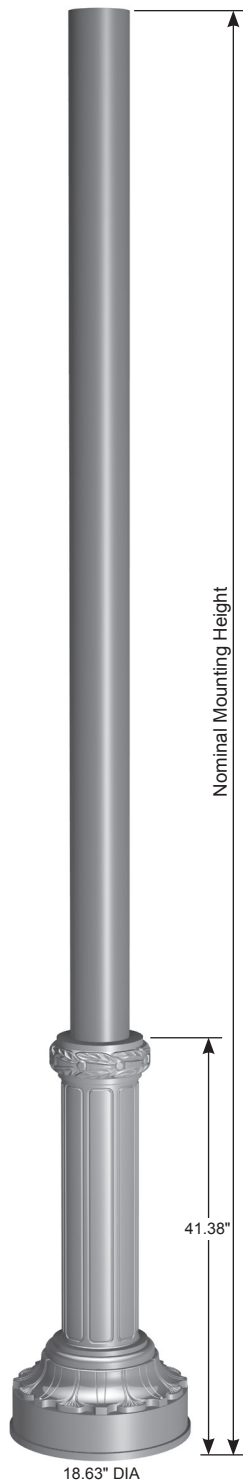


Job Name: _____	Client Name: _____
Job Location - City: _____ State: _____	Created By: _____ Date: _____
Product: 5A01ASR -- Quote: _____	Customer Approval: _____ Date: _____

SPECIFICATIONS



Tenon Top

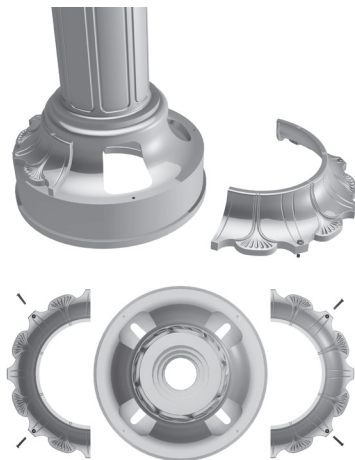


Cross Section



Round

Access Doors



Post - The post shaft is either spun or extruded from 6000 series alloy aluminum.

Post Top - A post top plate and tenon can be provided for top mount luminaire and/or bracket. A removable finial is available for posts receiving drilling patterns for side-mount luminaire arm assemblies.

Structural Base - The structural base is cast from 356 alloy aluminum and provided with two circumferential access doors near the bottom of the base. A grounding provision is provided. The post shaft is inserted and welded into the structural base casting. The completed assembly is heat-treated to a T6 temper after the structural welding is completed.

Anchor Bolts - Anchor bolts conform to ASTM F1554 Grade 55 and are provided with two hex nuts and two flat washers. Bolts have an "L" bend on one end and are galvanized a minimum of 12" on the threaded end.

Finish - The standard finish for the post assembly and components is polyester powder applied coating in accordance with Valmont's Specifications. Additional finish options available upon request.

PARK STREET

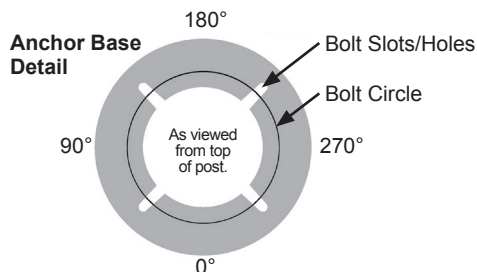
Round Tapered/Non-Tapered Aluminum Post

valmont 
STRUCTURES

Job Name: _____	Client Name: _____
Job Location - City: _____ State: _____	Created By: _____ Date: _____
Product: 5A01ASR -- Quote: _____	Customer Approval: _____ Date: _____

ANCHORAGE DATA

STRUCTURAL BASE				ANCHOR BOLTS		
BOLT CIRCLE		DIAMETER (IN)	THK (IN)	DIA x LENGTH x HOOK (IN)	PROJECTION (IN)	± (IN)
DIA (IN)	± (IN)					
13	1	18.63	0.75	0.75 x 17.00 x 3.00	3.63	0.25



LOAD AND DIMENSIONAL DATA

DESIGN INFORMATION							POST DIMENSIONS				MODEL NUMBER
NOMINAL MOUNTING HEIGHT	80 MPH w/1.3 GUST ¹		90 MPH w/1.3 GUST ¹		100 MPH w/1.3 GUST ¹		BASE OD (IN)	TOP OD (IN)	WALL THK (IN)	STRUCTURE WEIGHT ³ (LBS)	
	MAX LUMINAIRE EPA ² (SQFT)	MAX LUMINAIRE WEIGHT ² (LBS)	MAX LUMINAIRE EPA ² (SQFT)	MAX LUMINAIRE WEIGHT ² (LBS)	MAX LUMINAIRE EPA ² (SQFT)	MAX LUMINAIRE WEIGHT ² (LBS)					
Round Non-Tapered											
16'-0"	21.2	300	16.6	300	13.4	300	6.00	6.00	0.188	141	160060606SPS
18'-0"	17.5	300	13.7	300	10.9	300	6.00	6.00	0.188	149	180060606SPS
Round Tapered											
12'-0"	21.2	300	16.6	300	13.3	300	6.00	4.00	0.125	109	120040604TPS
14'-0"	16.9	300	13.1	300	10.5	300	6.00	4.00	0.125	114	140040604TPS
16'-0"	13.4	300	10.3	300	8.2	300	6.00	4.00	0.125	118	160040604TPS
18'-0"	10.7	300	8.2	300	6.4	300	6.00	4.00	0.125	123	180040604TPS
	17.2	300	13.3	300	10.6	300	6.00	4.00	0.188	139	180040606TPS

- EPA values are calculated using fastest mile winds.
- Maximum EPA (Effective Projected Area) and weight values are based on top mounted luminaires and/or brackets having a centroid 2'-6" above and 1'-6" eccentric to the post top at Nominal Mounting Height. Variations from sizes above are available upon inquiry at the factory. Satisfactory performance of posts is dependent upon the post being properly attached to a supporting foundation of adequate design.
- Structure Weight is a nominal value which includes the post shaft and structural base.

PRODUCT ORDERING CODES

DESIGN SERIES	CROSS SECTION	MODEL NUMBER		FIXTURE MOUNTING	COLOR	OPTIONS
5A01AS	R					
	Round	Round Non-Tapered	Round Tapered	Drill Mounting D1 = 1 Luminaire D2 = 2 @ 180° D3 = 3 @ 120° D4 = 4 @ 90° D5 = 2 @ 90° D6 = 3 @ 90° Tenon Mounting P2 = 2.38" OD x 4.00" PD = 3.00" OD x 3.00" -- = Plain Top P9 = Other Tenon (Contact Factory)	DWH = White DSS = Sandstone HTG = Hunter Green DNA = Natural Aluminum DCG = Charcoal Gray DMB = Medium Bronze DNB = New Dark Bronze DDB = Dark Bronze DBL = Black DSB = Steel Blue DTG = Dark Green DBR = Red SC = Special Color (Contact Factory)	See Decorative Accessories or Decorative Arms - Aluminum at valmontstructures.com (Please Specify)
		160060606SPS 180060606SPS	120040604TPS 140040604TPS 160040604TPS 180040604TPS 180040606TPS			