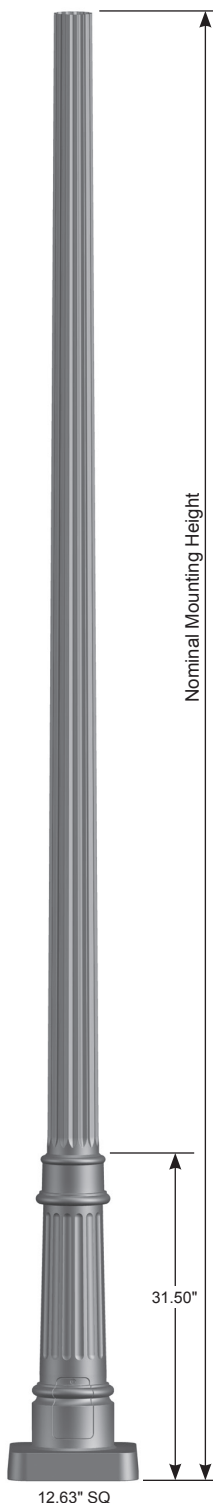
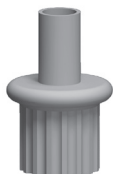


Job Name: _____	Client Name: _____
Job Location - City: _____ State: _____	Created By: _____ Date: _____
Product: SC12ASE -- Quote: _____	Customer Approval: _____ Date: _____

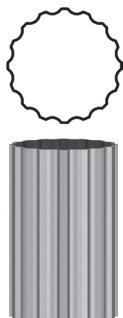
SPECIFICATIONS



Tenon Top



Cross Section



16 Flat Flute

Access Door



Post - The post shaft is either spun or extruded from 6000 series alloy aluminum.

Post Top - A post top plate and tenon can be provided for top mount luminaire and/or bracket. A removable finial is available for posts receiving drilling patterns for side-mount luminaire arm assemblies.

Structural Base - The structural base is cast from 356 alloy aluminum and provided with a 3.00" wide X 5.50" tall access door. A grounding provision is provided. The post shaft is inserted and welded into the structural base casting. The completed assembly is heat-treated to a T6 temper after the structural welding is completed.

Anchor Bolts - Anchor bolts conform to ASTM F1554 Grade 55 and are provided with two hex nuts and two flat washers. Bolts have an "L" bend on one end and are galvanized a minimum of 12" on the threaded end.

Finish - The standard finish for the post assembly and components is polyester powder applied coating in accordance with Valmont's Specifications. Additional finish options available upon request.

SACRAMENTO

Fluted Tapered/Non-Tapered Aluminum Post

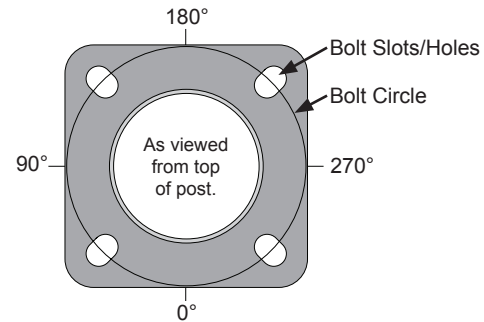
valmont 
STRUCTURES

Job Name: _____	Client Name: _____
Job Location - City: _____ State: _____	Created By: _____ Date: _____
Product: SC12ASE -- Quote: _____	Customer Approval: _____ Date: _____

ANCHORAGE DATA

STRUCTURAL BASE				ANCHOR BOLTS		
BOLT CIRCLE						
DIA (IN)	± (IN)	SQUARE (IN)	THK (IN)	DIA x LENGTH x HOOK (IN)	PROJECTION (IN)	± (IN)
12.50	0.50	12.63	0.625	0.75 x 17.00 x 3.00	3.50	0.25

Anchor Base Detail



LOAD AND DIMENSIONAL DATA

DESIGN INFORMATION							POST DIMENSIONS				MODEL NUMBER
NOMINAL MOUNTING HEIGHT	80 MPH w/1.3 GUST ¹		90 MPH w/1.3 GUST ¹		100 MPH w/1.3 GUST ¹		BASE OD (IN)	TOP OD (IN)	WALL THK (IN)	STRUCTURE WEIGHT ³ (LBS)	
	MAX LUMINAIRE EPA ² (SQ.FT)	MAX LUMINAIRE WEIGHT ² (LBS)	MAX LUMINAIRE EPA ² (SQ.FT)	MAX LUMINAIRE WEIGHT ² (LBS)	MAX LUMINAIRE EPA ² (SQ.FT)	MAX LUMINAIRE WEIGHT ² (LBS)					
Fluted Round Non-Tapered											
8'-0"	12.3	300	9.6	300	7.6	300	4.00	4.00	0.125	51	080040404UZ
10'-0"	9.2	300	7.0	300	5.4	300	4.00	4.00	0.125	55	100040404UZ
12'-0"	6.8	300	5.0	300	3.7	300	4.00	4.00	0.125	59	120040404UZ
	12.0	300	9.0	300	6.9	300	5.00	5.00	0.125	61	120050504UZ
14'-0"	9.0	300	6.5	300	4.8	300	5.00	5.00	0.125	66	140050504UZ
Fluted Round Tapered											
8'-0"	20.0	300	15.8	300	12.6	300	5.00	4.21	0.125	51	080042504VZ
10'-0"	15.7	300	12.1	300	9.5	300	5.00	3.93	0.125	55	100039504VZ
12'-0"	12.3	300	9.3	300	7.2	300	5.00	3.65	0.125	58	120037504VZ
14'-0"	9.4	300	6.9	300	5.2	300	5.00	3.40	0.125	62	140034504VZ

- EPA values are calculated using fastest mile winds.
- Maximum EPA (Effective Projected Area) and weight values are based on top mounted luminaires and/or brackets having a centroid 2'-6" above and 1'-6" eccentric to the post top at Nominal Mounting Height. Variations from sizes above are available upon inquiry at the factory. Satisfactory performance of posts is dependent upon the post being properly attached to a supporting foundation of adequate design.
- Structure Weight is a nominal value which includes the post shaft and structural base.

PRODUCT ORDERING CODES

DESIGN SERIES	CROSS SECTION	MODEL NUMBER		FIXTURE MOUNTING	COLOR	OPTIONS
SC12AS	E					
	16 Flat Flute	Fluted Round Non-Tapered	Fluted Round Tapered	Drill Mounting D1 = 1 Luminaire D2 = 2 @ 180° D3 = 3 @ 120° D4 = 4 @ 90° D5 = 2 @ 90° D6 = 3 @ 90° Tenon Mounting P2 = 2.38" OD x 4.00" PD = 3.00" OD x 3.00" -- = Plain Top P9 = Other Tenon (Contact Factory)	DWH = White DSS = Sandstone HTG = Hunter Green DNA = Natural Aluminum DCG = Charcoal Gray DMB = Medium Bronze DNB = New Dark Bronze DDB = Dark Bronze DBL = Black DSB = Steel Blue DTG = Dark Green DBR = Red SC = Special Color (Contact Factory)	See Decorative Accessories or Decorative Arms - Aluminum at valmontstructures.com (Please Specify)
		080040404UZ	080042504VZ			
		100040404UZ	100039504VZ			
		120040404UZ	120037504VZ			
		120050504UZ				
		140050504UZ				