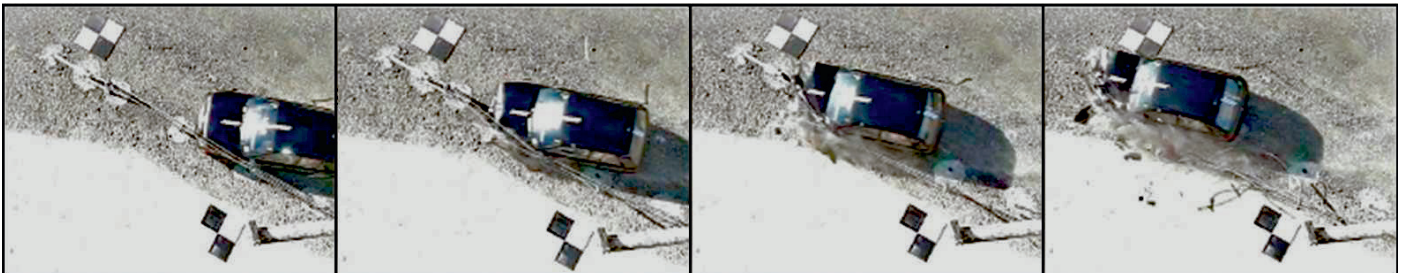


OVERVIEW

The **Universal A.T.E.** (Armorwire Terminal End) is designed to safely anchor three or four barrier cables to the ground. The unique **Universal A.T.E.** technology consists of a series of cables, special washers and a Trigger Post which allows the Cable Barrier to disengage from the anchor foundation during direct vehicle impact.

Traditional anchoring systems can induce dangerous vehicle behaviour upon direct impact such as snagging or vaulting. The challenge was to design an anchoring system strong enough to hold the barrier prescribed tension as well as collision loads while remaining safe if impacted directly.

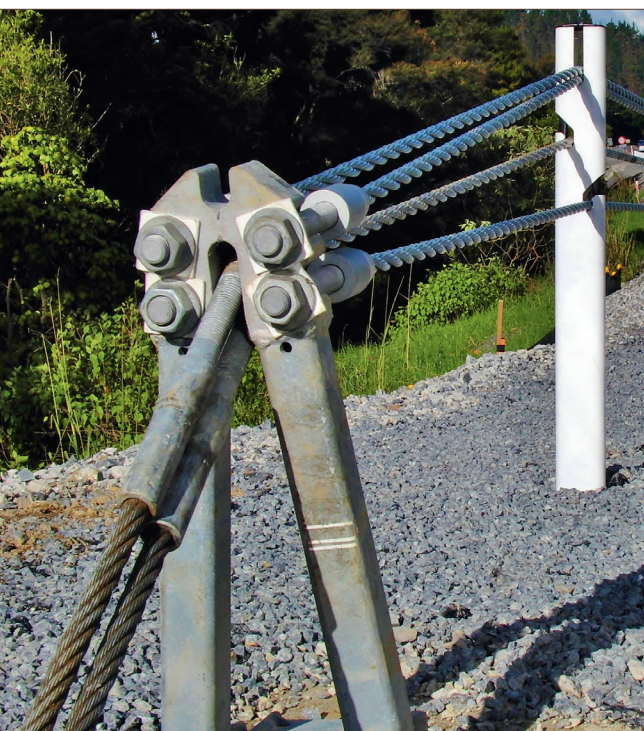
The **Universal A.T.E.** not only satisfies such demanding design requirements, it is also one of the simplest systems to install, offering several foundation alternatives suitable to common soil conditions.



820 kg Vehicle, 100kph (reverse direction), 20° Impact on Universal ATE (Test 3-39 NCHRP 350)

FEATURES

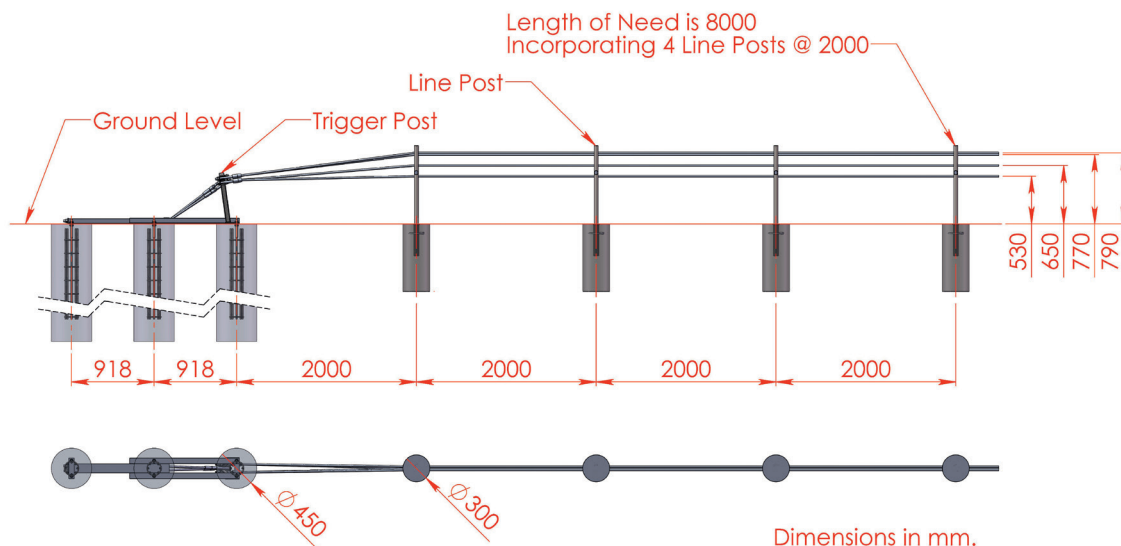
- Exceptionally safe vehicle behaviour (during impact)
- Suitable for 3 or 4 Cable Barriers
- Typically less concrete is required for the anchor piles (compared to other systems).
- Foundations can be drilled using the same machine used for line post
- Easily installed and zero maintenance required
- Easy and fast repair after impact
- High performance at low cost
- Tested and accepted to NCHRP 350 TL-3





SPECIFICATIONS

- Length of Need: 8m
- Max flare 300mm over the entire 10m of the Terminal End
- Posts #2-#5 are spaced at 2m
- External steel components are hot dip galvanized
- Ground Strut foundations available to suit soil conditions
- All concrete is required to be 25MPa
- Nominal operating Tension 25 kN continuous



Universal A.T.E. ArmorWire Terminal End

SUMMARY

The Universal A.T.E. is tested and accepted to NCHRP 350 TL-3 criteria and as a terminal end for either 3 or 4 Cable Barriers.

When an errant vehicle impacts directly with the **Universal A.T.E.** the cables disconnect from the Trigger Post de-tensioning the cable barrier immediately. This allows the vehicle to remain on its wheels at all times without snagging or vaulting which is common behavior on traditional Cable Barrier anchors.

Universal A.T.E. offers the simplest installation and repair process, promptly re-establishing safety in our roads, saving more lives.



AM(v3) 100912

REPRESENTED BY:

